

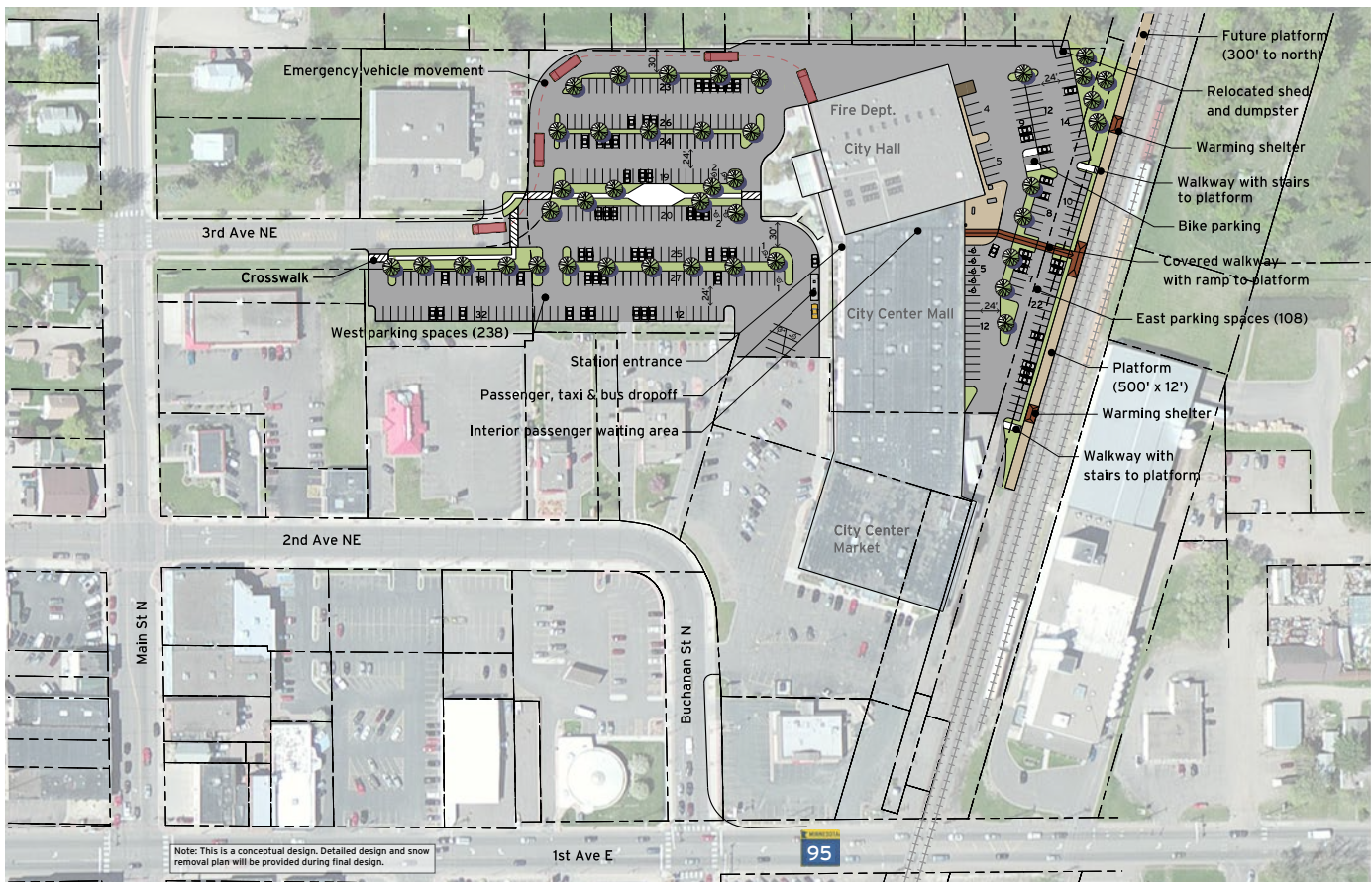
Northern Lights Express Project

Station Spotlight | Cambridge

The Cambridge City Center Mall, a heavily used community facility in the heart of the city, will house the NLX Cambridge station. Located just off Buchanan Street North and west of the existing BNSF railroad tracks, the station's central location is well-connected to local and regional transportation facilities and is accessible to pedestrians, transit users, and vehicles. The site has convenient local and regional access from 1st Avenue East, Main Street, Highway 65 and Highway 95. The City of Cambridge supports the proposed station site because of its potential to serve local businesses and the downtown area. The Cambridge Common Council passed a resolution supporting the site in November 2014. The passenger waiting area will be located in the mall; the boarding platform will be located within BNSF right-of-way. Construction of the station will not require private property acquisition and the large site will accommodate modern intercity passenger rail service, and provide:

- ◆ A climate controlled passenger waiting area and on-site ticket kiosk machines
- ◆ A 500-foot-long platform with warming shelters
- ◆ Short-term and long-term parking
- ◆ Multimodal access with efficient passenger, taxi and bus drop-off, and bicycle parking
- ◆ Americans with Disabilities Act compliant facilities

The station platform will be placed 300 feet from the nearby Highway 95 grade crossing, allowing the crossing gates at Highway 95 to remain open while a train is at the station. Also, the new NLX signaling system will reduce delays on Highway 95 by freight train blockage.



Conceptual layout of the Cambridge station