

National Pavement Preservation Study (Northern Test Sections)

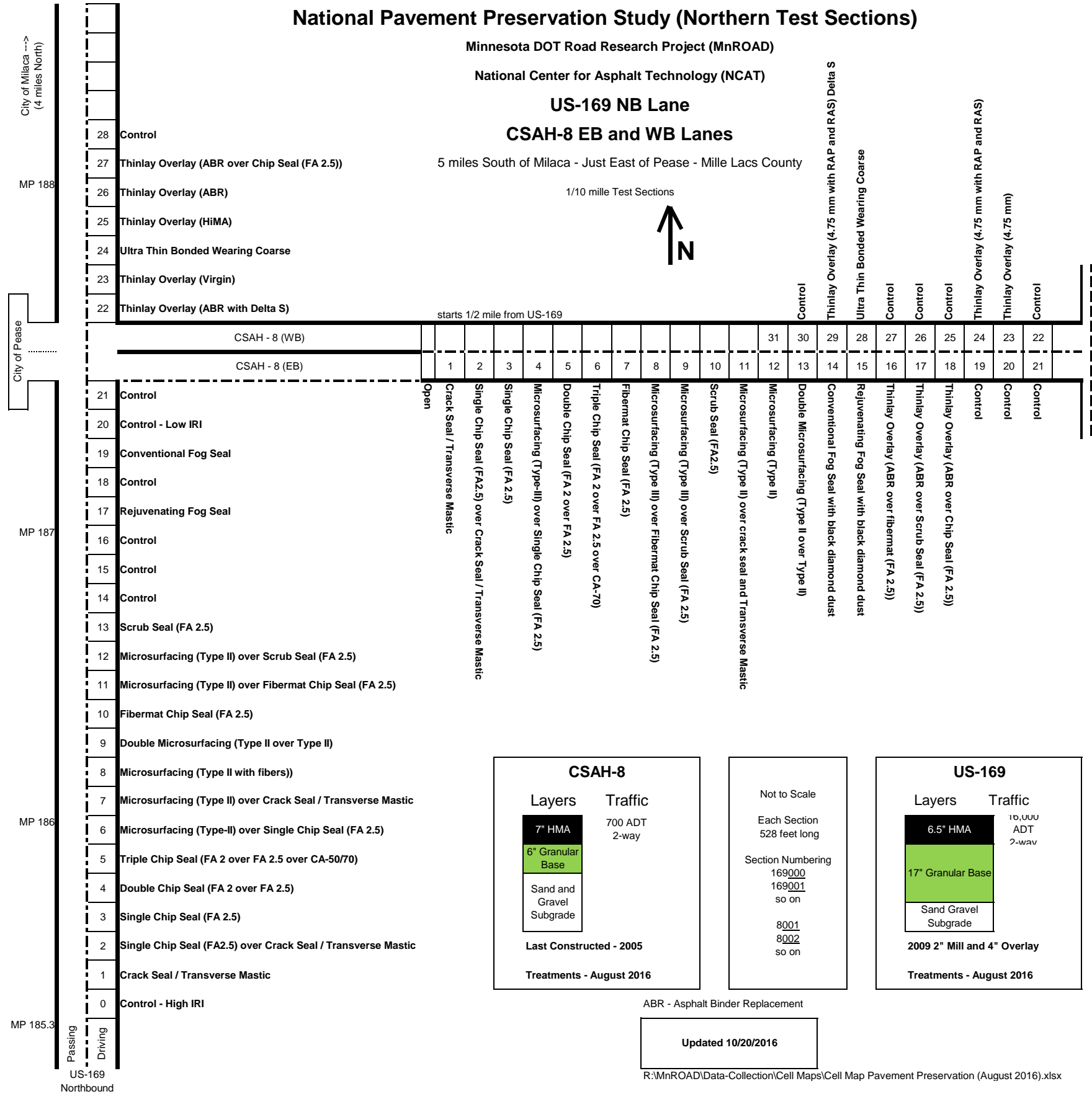
Minnesota DOT Road Research Project (MnROAD)

National Center for Asphalt Technology (NCAT)

US-169 NB Lane CSAH-8 EB and WB Lanes

5 miles South of Milaca - Just East of Pease - Mille Lacs County

1/10 mile Test Sections



CSAH-8

| Layers | Traffic |
|--------------------------|---------|
| 7" HMA | 700 ADT |
| 6" Granular Base | 2-way |
| Sand and Gravel Subgrade | |

Last Constructed - 2005

Treatments - August 2016

Not to Scale

Each Section
528 feet long

Section Numbering
169000
169001
so on

8001
8002
so on

US-169

| Layers | Traffic |
|----------------------|------------|
| 6.5" HMA | 16,000 ADT |
| 17" Granular Base | 2-way |
| Sand Gravel Subgrade | |

2009 2" Mill and 4" Overlay

Treatments - August 2016

ABR - Asphalt Binder Replacement

Updated 10/20/2016

R:\MnROAD\Data-Collection\Cell Maps\Cell Map Pavement Preservation (August 2016).xlsx