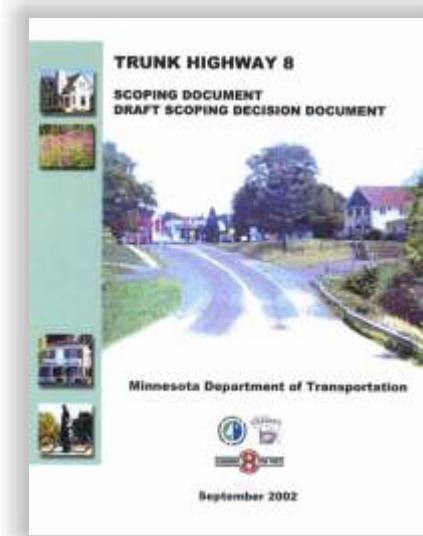


HIGHWAY 8 CORRIDOR



TH 8 Scoping Study

- Identified deficiencies along existing T.H. 8 corridor
 - Safety
 - Mobility
 - Access
 - Capacity
- Recommended short term/mid term and capacity improvement
- Provided 20 year corridor plan

TEA -21 Projects and Study

TEA -21
TH 8 Corridor Projects & Study, costs in Millions

Study/Project	Comments	Study/Construction Project	Cost Total
MSE	TH 8 Scoping Study	Completed in 2002	0.858
TH 8 at Co. Hwy 22	New Signalized Intersection & Access Control	Constructed in 2001	2.454
Co. Hwy 27	Co. 27 Upgrading & Paving Co. Hwy 9 to Co. Hwy 21	Constructed in 2001	4.874
Co. Hwy 27	Co. 27 Upgrading & Paving Co. Hwy 21 to Co. Hwy 30	Constructed in 2001	3.721
Co. Hwy 90	33rd Ave. & North Ave. Trail	Constructed in 2001	3.239
TH 8 in Chicago City	Improve TH 8 side west of Co. Hwy 90 to Signalized Int. - STANBRO 182, Co. 80 & Weyman Ave.	Constructed in 2007	9.801
TH 8 in Center City	TH 8 & Co. Hwy 3 Intersection and lane crossing	Constructed in 2007	3.417
Co. Hwy 23	Improve Co. Hwy 23 from Jeffrey Ave. to Co. Hwy 38	Constructed in 2004	3.819

TEA-21 Study and projects funded using High Priority Project, other Federal, State, and Local Sources: \$21,806.92

TH 8 Corridor TEA-21 HPP Authorization of \$12,429 + \$3,113 RAJA = \$15,542



Crash rate and severity rates reduced along corridor

US-8 Crash Data from: 1991 through 2006

Roadway	1991-1993		1993-1995		1995-1997		1997-1999		1999-2001		2004-2006	
	Crash Rate	Number	Crash Rate	Number	Crash Rate	Number	Crash Rate	Number	Crash Rate	Number	Crash Rate	Number
I-35 to CSAH 22	1.3	122	1.0	111	0.9	99	1.1	140	1.0	163	0.9	95
CSAH 22 to CSAH 24/77	2.7	42	3.3	63	2.6	47	2.2	45	1.9	17	1.0	77
CSAH 24/77 TO CSAH 14	1.6	56	1.8	71	1.9	75	1.4	59	1.6	65	1.5	62
CSAH 14 TO CSAH 25	5.4	53	5.2	56	5.4	58	5.5	61	4.1	59	4.3	67
CSAH 25 TO CSAH 9	2.4	46	1.8	41	1.6	36	1.2	27	1.6	32	1.4	30
CSAH 9 TO TH-95	1.5	76	1.2	76	1.1	68	1.4	86	0.9	54	1.0	58
TH 95 to St. Croix River	1.8	29	1.1	9	1.0	25	0.7	17	1.3	51	1.0	38
(Statewide Average) / AVERAGE / TOTAL	(3.4)/2.4	424	(3.4)/2.2	427	(3.4)/2.1	408	(3.4)/1.9	435	(3.4)/1.3	441	(3.4)/1.6	427

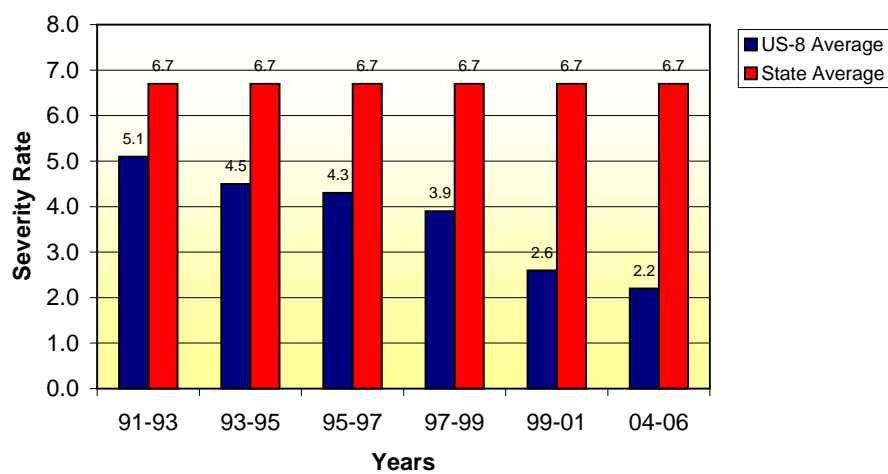
The crash rate (CR) section = $\frac{1,000,000 \times \text{CRASH}}{\text{ADT} \times \text{Length} \times \text{Days}}$

US-8 Crash Severity from: 1991 through 2006

ROADWAY/SEGMENT	91 - 93		93 - 95		95 - 97		97 - 99		99 - 01		04 - 06	
	Severity Rate	Severity Rate	Severity Rate	Severity Rate	Severity Rate	Severity Rate	Severity Rate	Severity Rate	Severity Rate	Severity Rate	Severity Rate	
I-35 to CSAH 22		2.9		2.4		2.1		2.3		2.2		1.4
CSAH 22 to CSAH 24/77		6.3		7.1		5.9		5.1		3.0		1.4
CSAH 24/77 to CSAH 14		3.8		3.7		4.1		3.1		3.5		2.5
CSAH 14 to CSAH 25		11.3		9.5		10.4		9.6		7.8		5.4
CSAH 25 to CSAH 9		5.5		3.9		3.4		2.7		3.2		1.6
CSAH 9 to TH-95		3.1		2.3		2.2		2.9		1.9		1.7
TH 95 to St. Croix River		2.6		2.3		2.3		1.7		2.5		1.4
(STATEWIDE AVERAGE) / TH 8 AVERAGE		(6.7)/5.1		(6.7)/4.5		(6.7)/4.3		(6.7)/3.9		(6.7)/2.6		(6.7)/2.2

The severity rate (SR) applies a weight value to the severity of the crash
 SR section = $\frac{1,000,000 \times (10 \times \text{FAT}) + 4 \times (\text{INJ}) + \text{N}}{\text{ADT} \times \text{Length} \times \text{Days}}$
 FAT = Number of fatal crashes
 INJ = Number of injury crashes
 N = Number of property damage only crashes
 VM = Vehicle Miles

US-8 Crash Severity Rates



SAFETEA-LU

In 2004, Federal law "SAFETEA-LU" provided \$5.76 M for capacity and safety improvements to Highway 8 from west of 306th to the eastern limits of Lindstrom. These funds, along with state and local funds will be used to construct this project. Project development updates can be found at www.dot.state.mn.us/metro/projects/th8/proj.html

In 2004, Federal law "SAFETEA-LU" provided \$0.48 M for an environmental review for Highway 8 upgrade to 4 lanes from Forest Lake to Chisago City. Study development updates can be found at www.dot.state.mn.us/metro/projects/th8/study.html

Ongoing Township, City, County, Mn/DOT and TH 8 Task Force activities to address corridor deficiencies:

- Access management
- Striping
- Bypasses/Turnlanes
- Lighting
- Signal optimization
- Rumble strips
- Land use plans
- Funding for improvements

www.dot.state.mn.us/metro/projects/th8