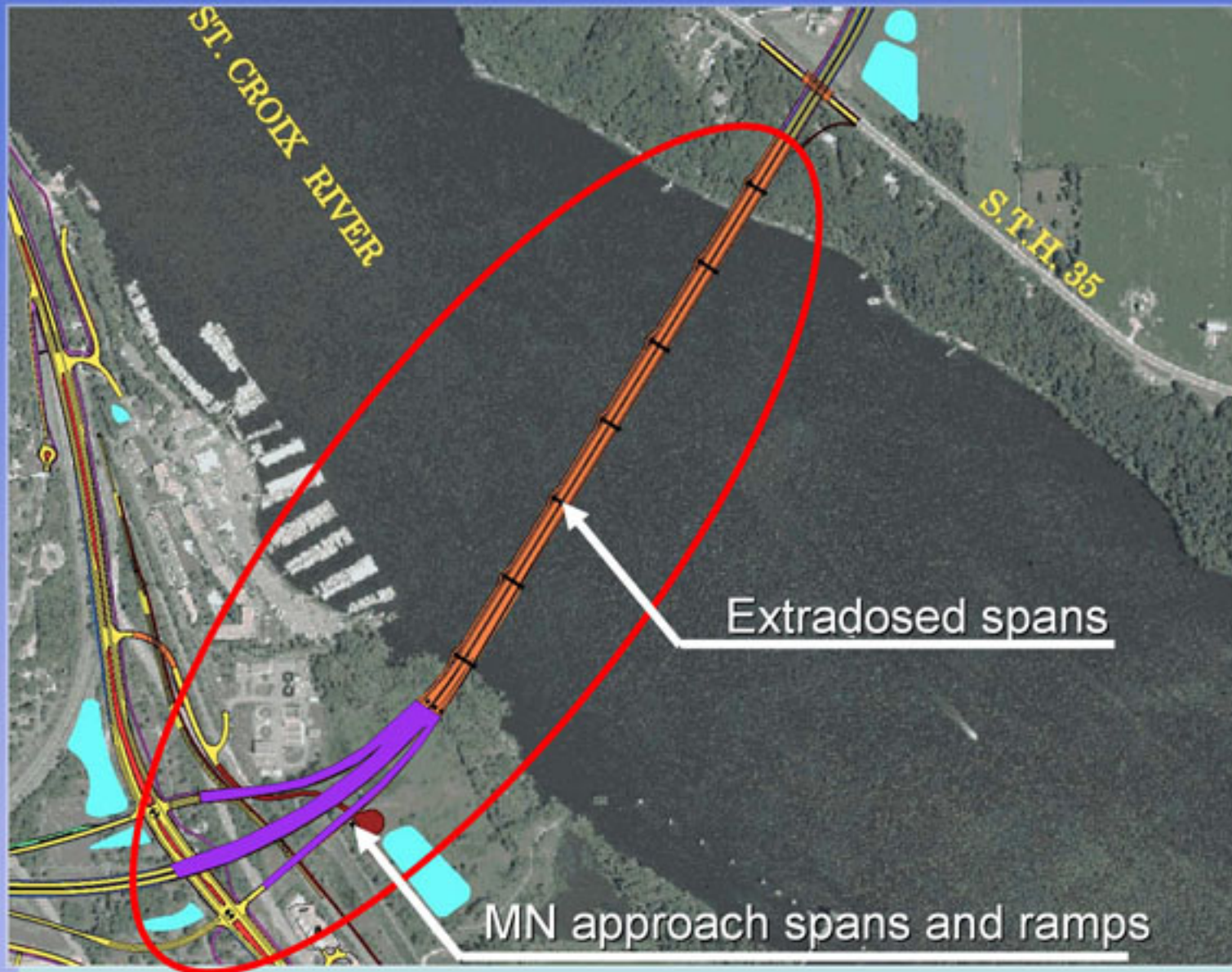


St. Croix River Crossing Project Public Information Meeting



St. Croix River Crossing, Preliminary Engineering
and Design Criteria Mn/DOT Contract No. 92530

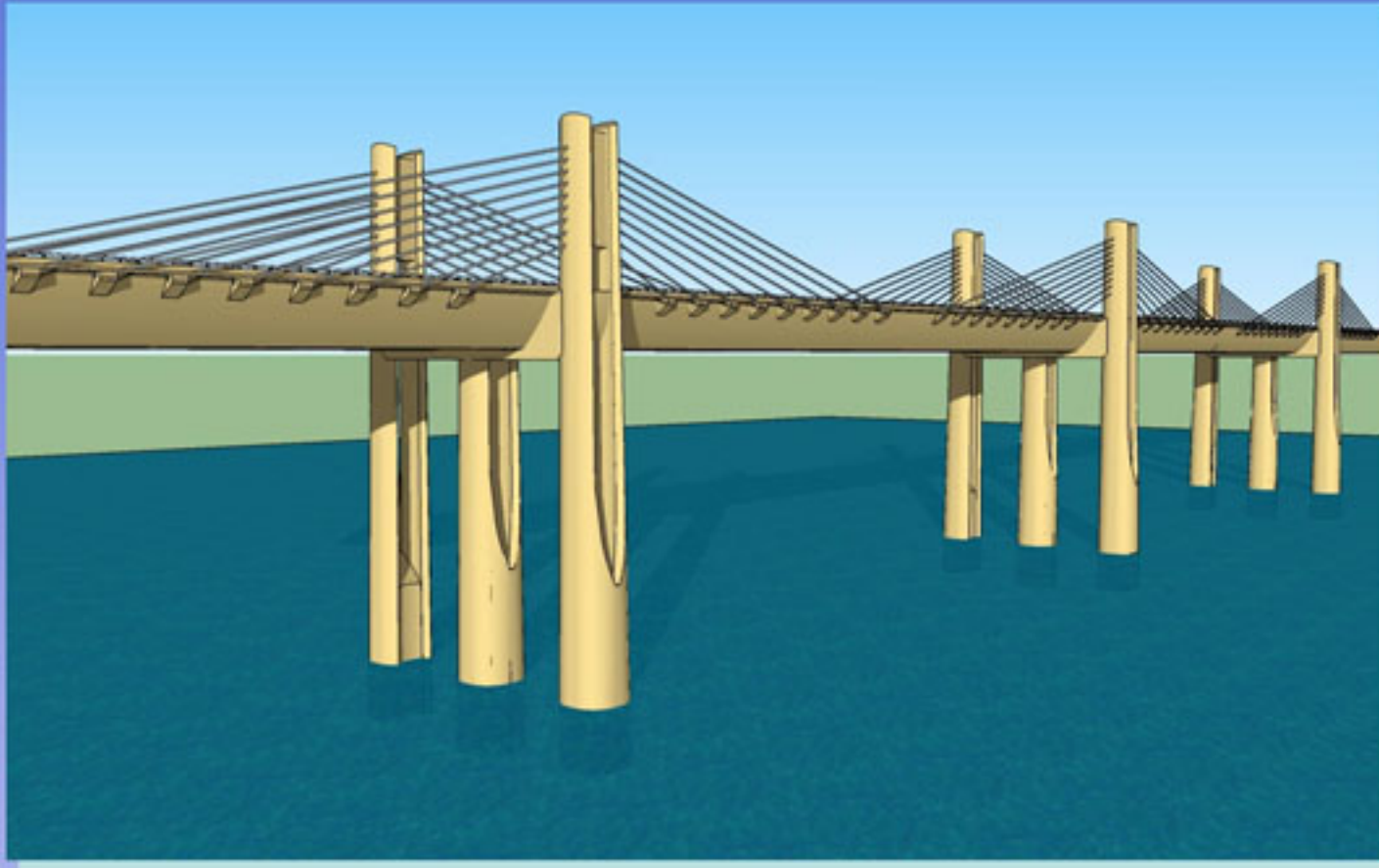
Project Elements



General Study Description

- *Evaluating the design and making refinements to enhance safety, and life cycle operations and maintenance of the structure.*
 - *Verify the structural sufficiency and feasibility of the conceptual bridge design as summarized in the Visual Quality Manual.*
 - *Evaluating a number of options related to the sizes of structural members with the goal of reducing cost while maintaining the overall appearance as outlined in the Visual Quality Manual.*
 - *Evaluating the constructability of the concept design and recommending appropriate refinements.*
- *Coordination of these efforts with appropriate agencies, stakeholders and the general public*
- *Prepare technical documents that will be used by the Minnesota Department of Transportation to prepare a solicitation for the final design and construction of the bridge.*

Progress Images



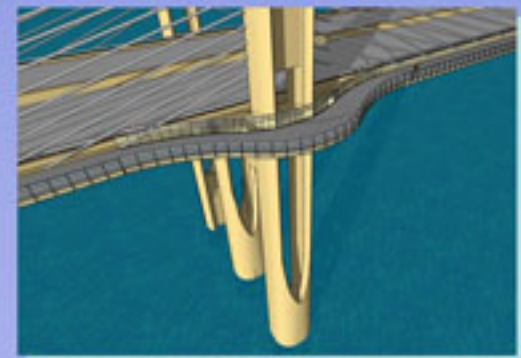
View of refined 3-column form



Road deck view



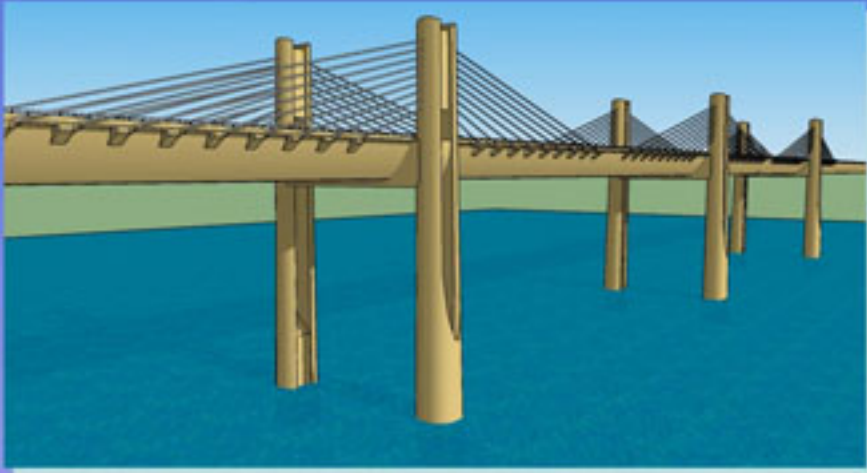
View along exterior barrier



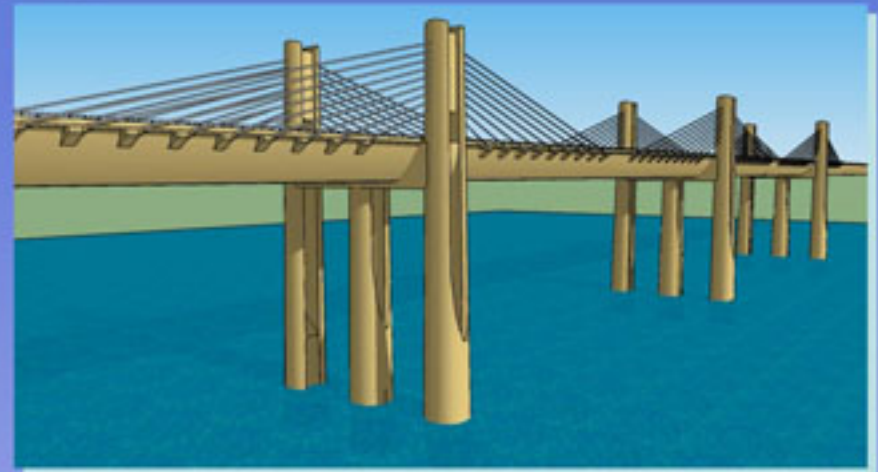
View along north side at tower

Elements Under Study

- *Two vs. three column configuration*
 - *The goal is to delete the center column if structurally possible.*



Two column configuration



Three column configuration



One box girder

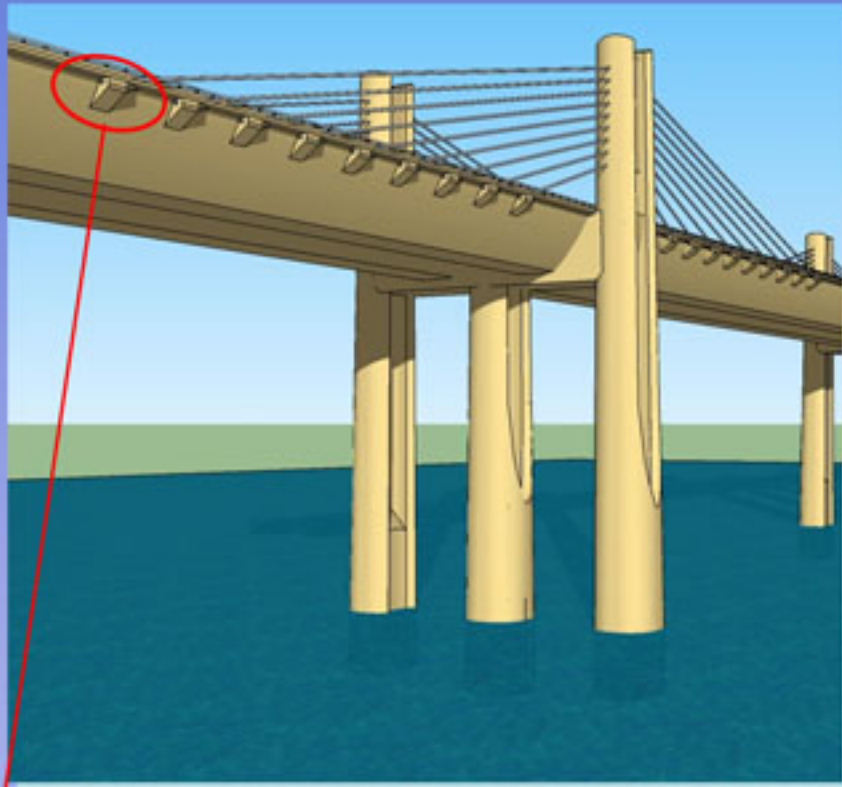


Two box girders

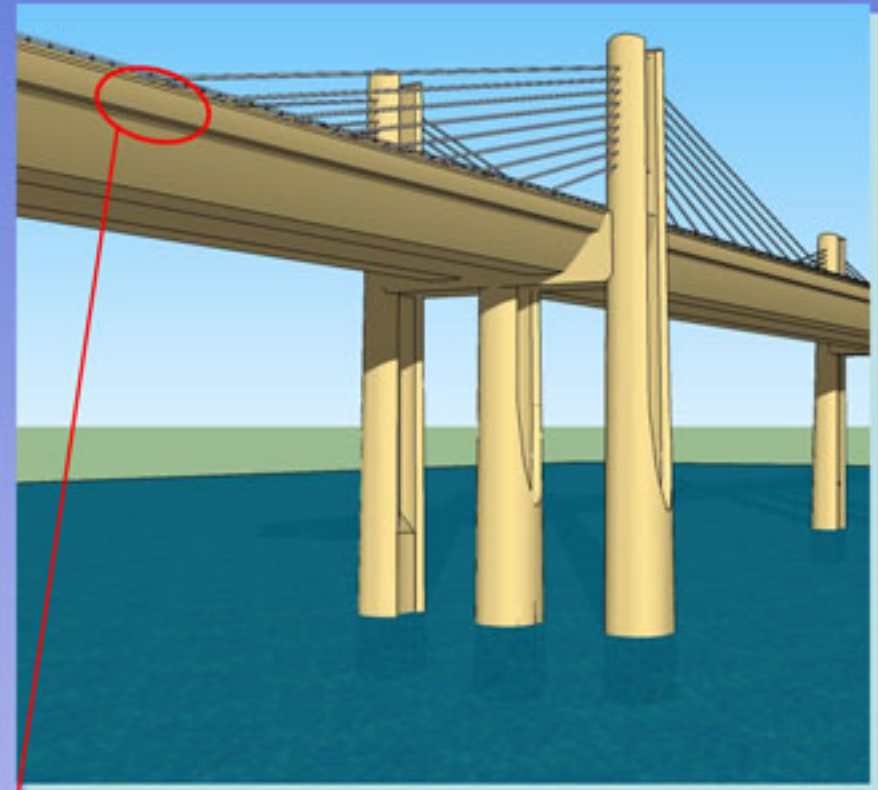
- *One vs. two box girder configuration and depth of structure*
 - *The two box option requires struts be placed between them.*
 - *The option will be selected based upon cost and constructability issues.*
 - *The depth of the box girders is also being studied with the goal to reduce depth and overall cost*

Elements Under Study

- *Cable attachment (exposed vs. covered)*



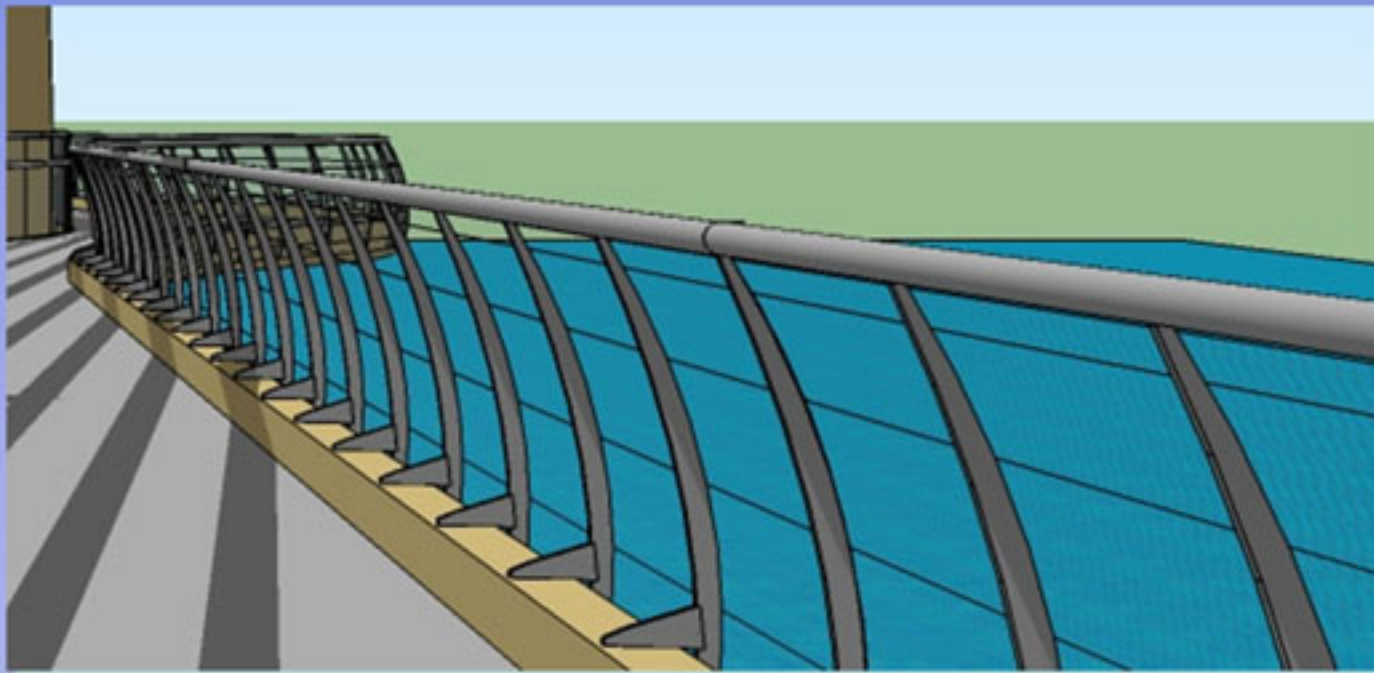
Exposed cable attachment

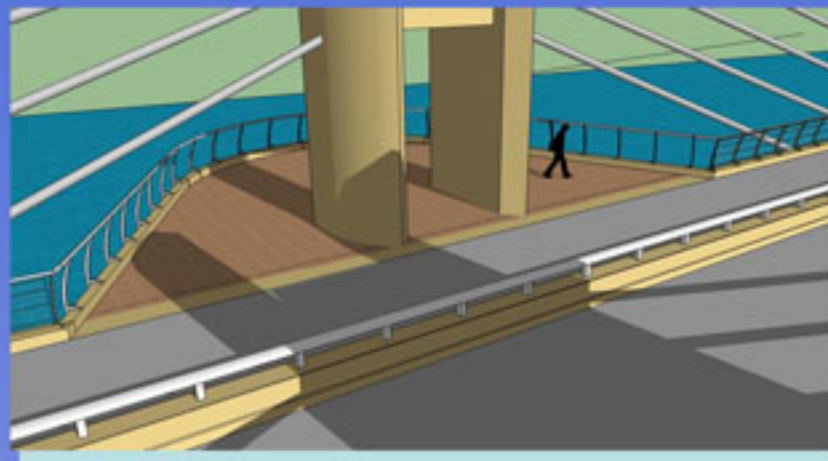
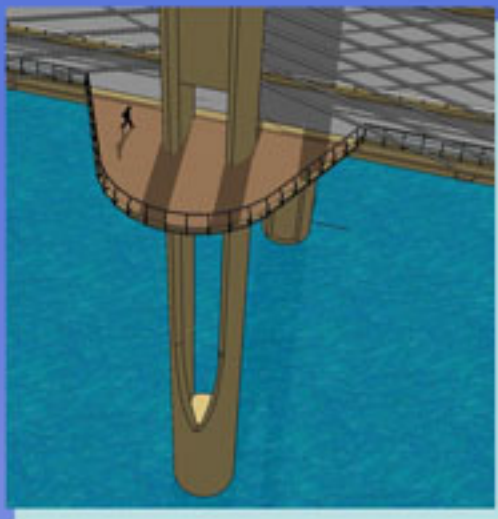


Covered cable attachment

Additional Study and Design Efforts

- *Pedestrian railing and path lighting design*
- *Bridge aesthetic lighting design*
- *Color selections*





Potential overlook plaza at tower

Loop Trail Inboard of Towers



View looking along trail

Loop Trail Outboard of Towers

