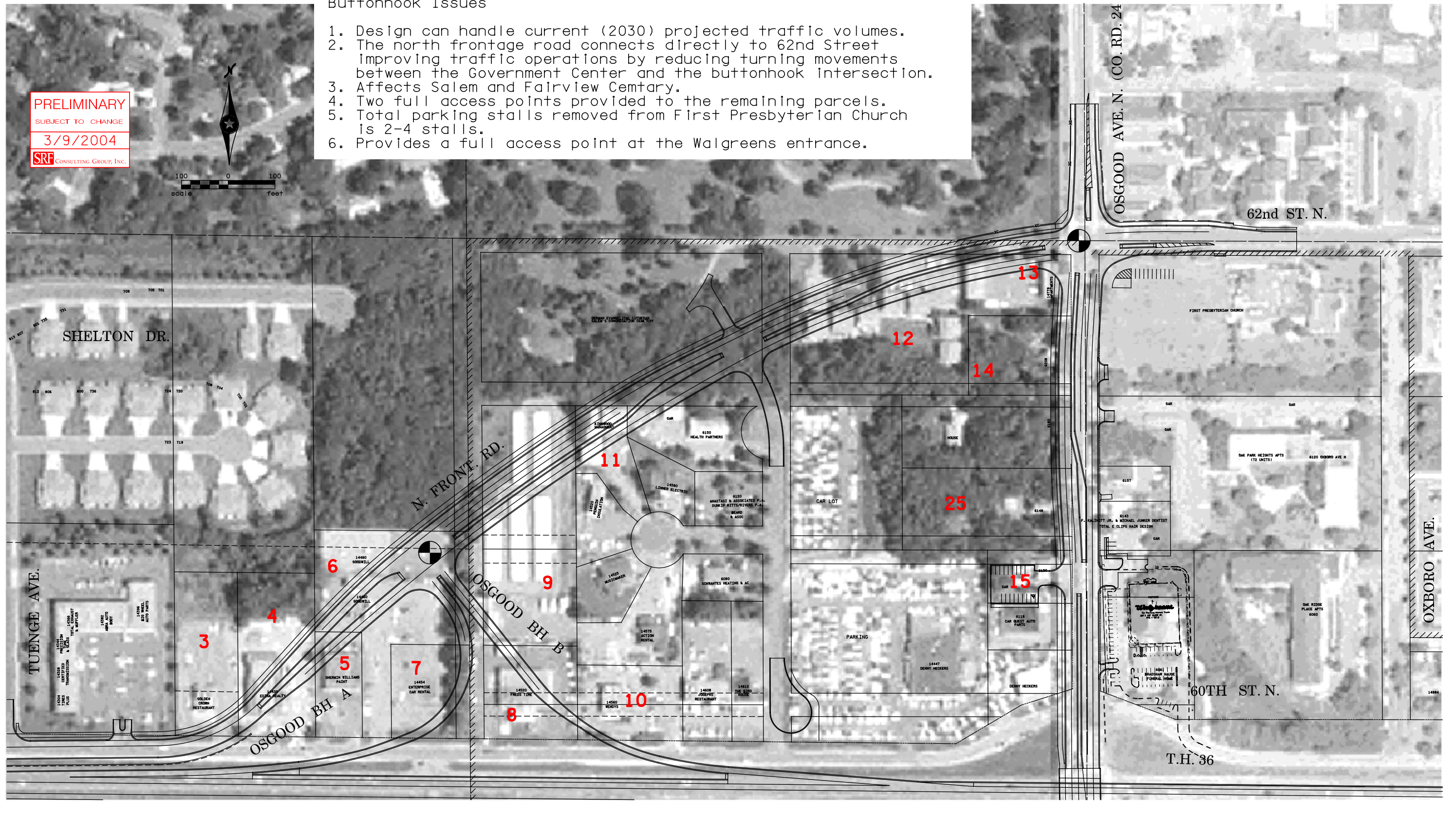
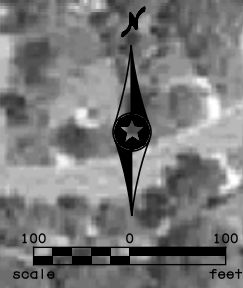


Buttonhook Issues

1. Design can handle current (2030) projected traffic volumes.
2. The north frontage road connects directly to 62nd Street
Improving traffic operations by reducing turning movements between the Government Center and the buttonhook intersection.
3. Affects Salem and Fairview Cemetary.
4. Two full access points provided to the remaining parcels.
5. Total parking stalls removed from First Presbyterian Church is 2-4 stalls.
6. Provides a full access point at the Walgreens entrance.

PRELIMINARY
SUBJECT TO CHANGE
3/9/2004
SRI CONSULTING GROUP, INC.



I:\proj\4686\4686-VI-mv\graphics\buttonhook_rv\w\quad_osgood\4686-buttonhook_rv.dwg

CURRENT DESIGN - TAG (DEC. 2003)

St. Croix River Crossing Project

Figure 5

NORTH OSGOOD BUTTONHOOK AREA