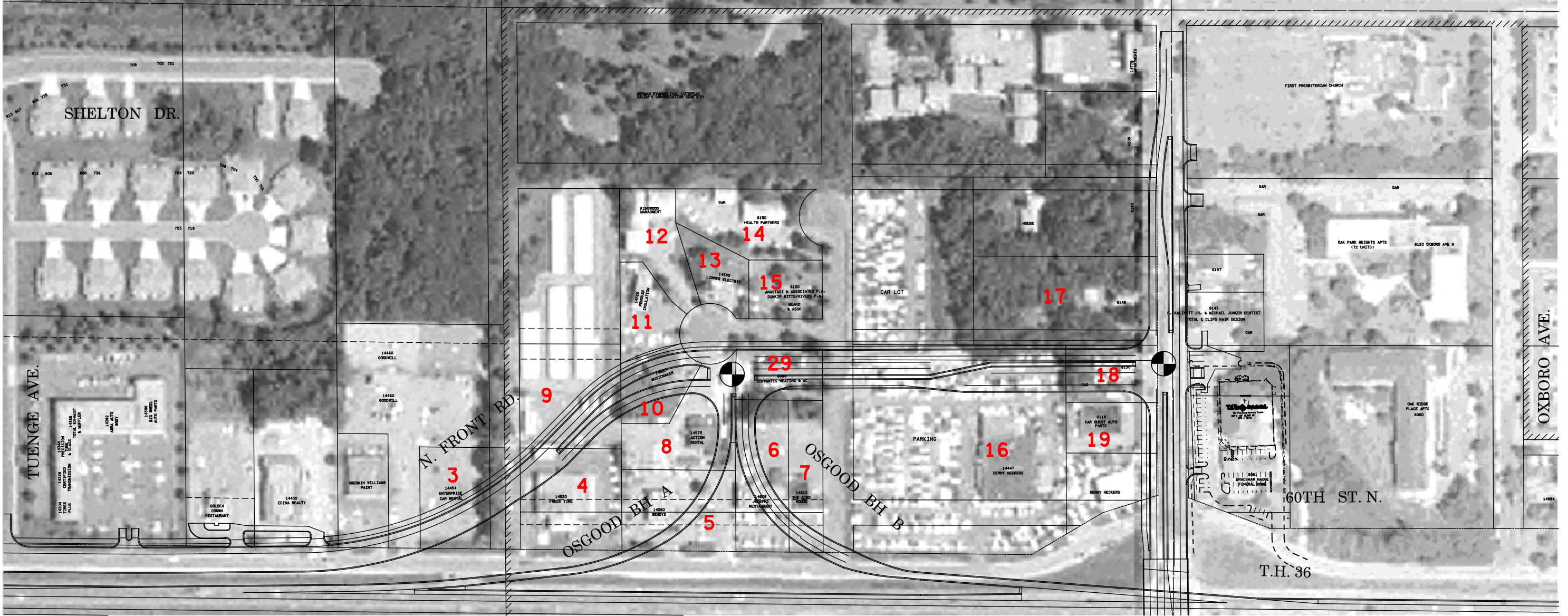


Buttonhook Issues

1. Design can not handle current (2030) projected traffic volumes.
2. Most of the remaining parcels would only be right in/right out access.
3. A longer Osgood bridge is required - causing TH 36 to be lower and a higher bridge cost.
4. Does not line up with 62nd Street and negatively effects traffic operations by increasing turning movements between the Government Center and the buttonhook intersection.
5. Provides a full access point at the Walgreens entrance.



I:\proj\4686\4686\graphics\buttonhook\_rvw\quad\_osgood\4686\_button\_rvw.dwg

**PRELIMINARY DESIGN (ITERATION # 1) - TAG FALL 2003**

St. Croix River Crossing Project

**Figure 2**

NORTH OSGOOD BUTTONHOOK AREA