

The Stillwater Lift Bridge in Transition



1931



Present Day



Future Pedestrian and Bicycle Facility



Why Preserve the Lift Bridge?

- Listing on the National Register of Historic Places invokes federal preservation processes and standards for historic properties.
- Conversion for trail use provides resolution under federal environmental and preservation laws that apply to the St. Croix River Crossing Project.
- Preservation of the Stillwater Lift Bridge and 23 other premier historic bridges is a key part of Mn/DOT's streamlined federal review process for future bridge replacement projects.
- Keeping the Lift Bridge provides a Wisconsin-Minnesota connection for the future Loop Trail.





What Is A Management Plan?

A management plan guides the rehabilitation of a historic bridge, following an approach that meets the Secretary of the Interior's Standards for the Treatment of Historic Properties.

- Mn/DOT's ongoing efforts to develop management plans for 24 historic bridges are designed to comply with Section 106 of the National Historic Preservation Act of 1966, as amended, and Section 4(f) of the U.S. Department of Transportation Act of 1966.
- For the Stillwater Lift Bridge, the management plan presents the best option for long-term preservation, with due consideration to transportation needs and reasonable costs.
- The management plan identifies stabilization, preservation and maintenance activities. Recommendations are consistent with the Secretary's Standards.
- Preservation objectives call for conservation of as much of the existing historic fabric of the bridge as possible, especially character-defining features. Rehabilitation plans also recognize safety, performance, and practical considerations.



Historic Stillwater Lift Bridge
Management Plan and Repair Project

Character-Defining Features

Character-defining features are physical elements that represent the bridge's historical significance.

1. Vertical lift span and details.



2. Parker truss spans and details.



3. Concourse, spans 1 and 2.



Secretary of the Interior's *Standards for Treatment of Historic Properties*

Standards for Rehabilitation (applies to vertical lift and truss spans)—Repair or replace historic materials while preserving features that convey historical or architectural importance.



Standards for Restoration (applies to concourse and approach spans)—Preserve and restore materials from original construction.



Historic Stillwater Lift Bridge
Management Plan and Repair Project

Sites and Districts in the National Register of Historic Places

- *Stillwater Lift Bridge and Concourse* (listed 1989)—Built in 1931, the bridge is a rare example of vertical-lift design in Minnesota.
- *Stillwater Commercial Historic District* (listed 1992)—Central business district and the concourse.
- *Stillwater Cultural Landscape District* (determined eligible 2001)—The historic and cultural resources in Minnesota and Wisconsin, including the Lift Bridge and the Commercial Historic District.



Historic Stillwater Lift Bridge
Management Plan and Repair Project

Lift Bridge Condition

Truss Spans



Corroded Sidewalk Support Bracket



Truss, Portal Member—Steel Section Loss



Corroded Areas of Lower Truss Chord



North Railing—Bent and Corroded Members

Lift Bridge Condition

Concrete

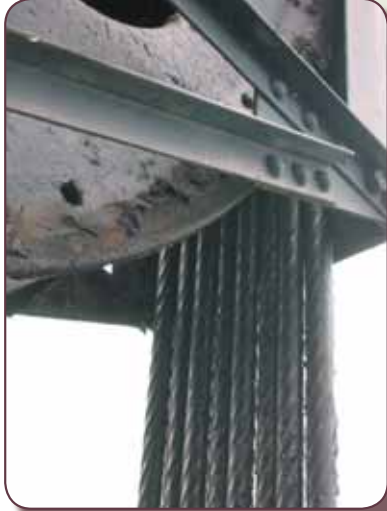


Span 1 Ballustrade—Concrete Spalling



Pier 8—Concrete Deterioration

Mechanical

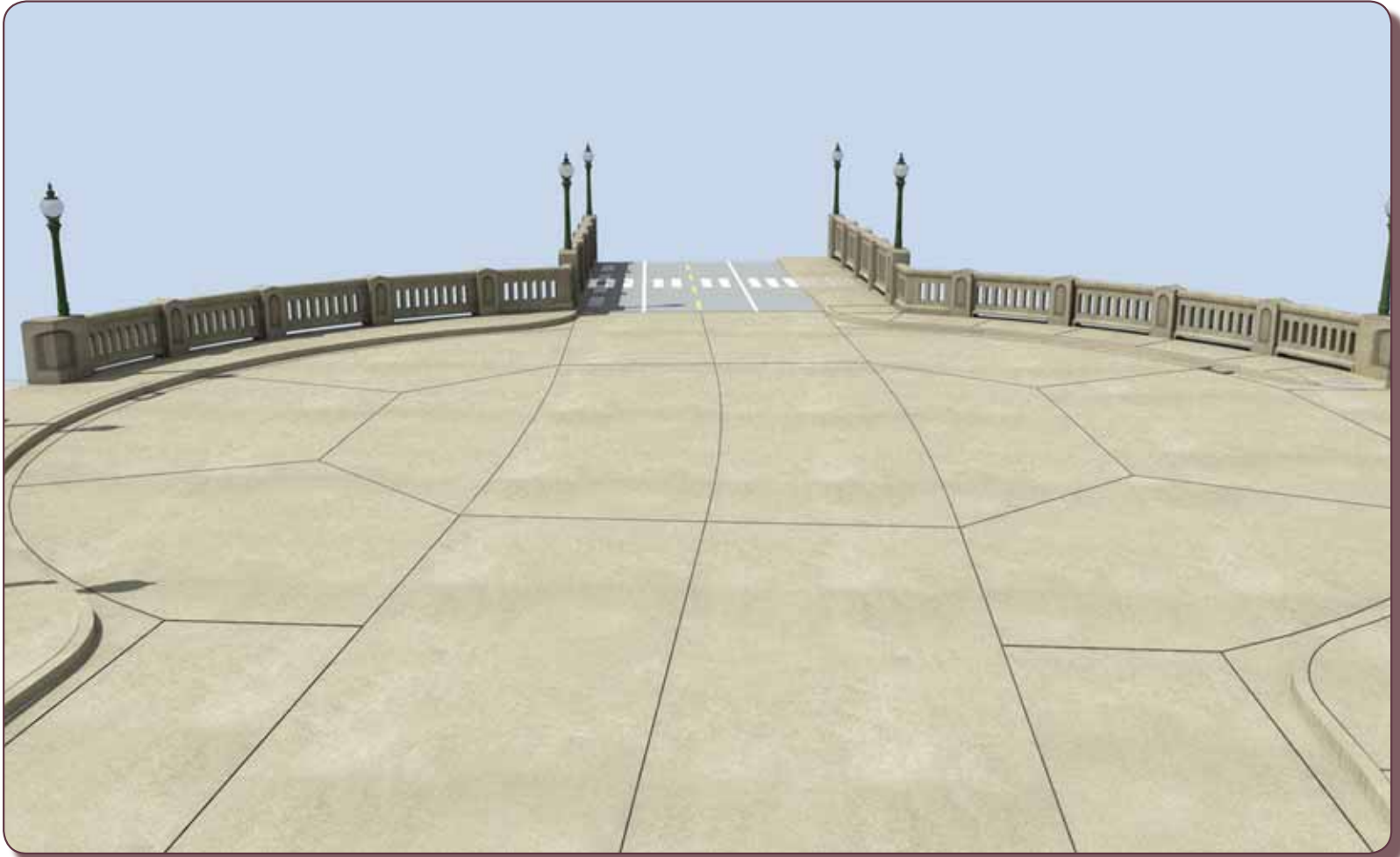


Worn Counterweight Cables



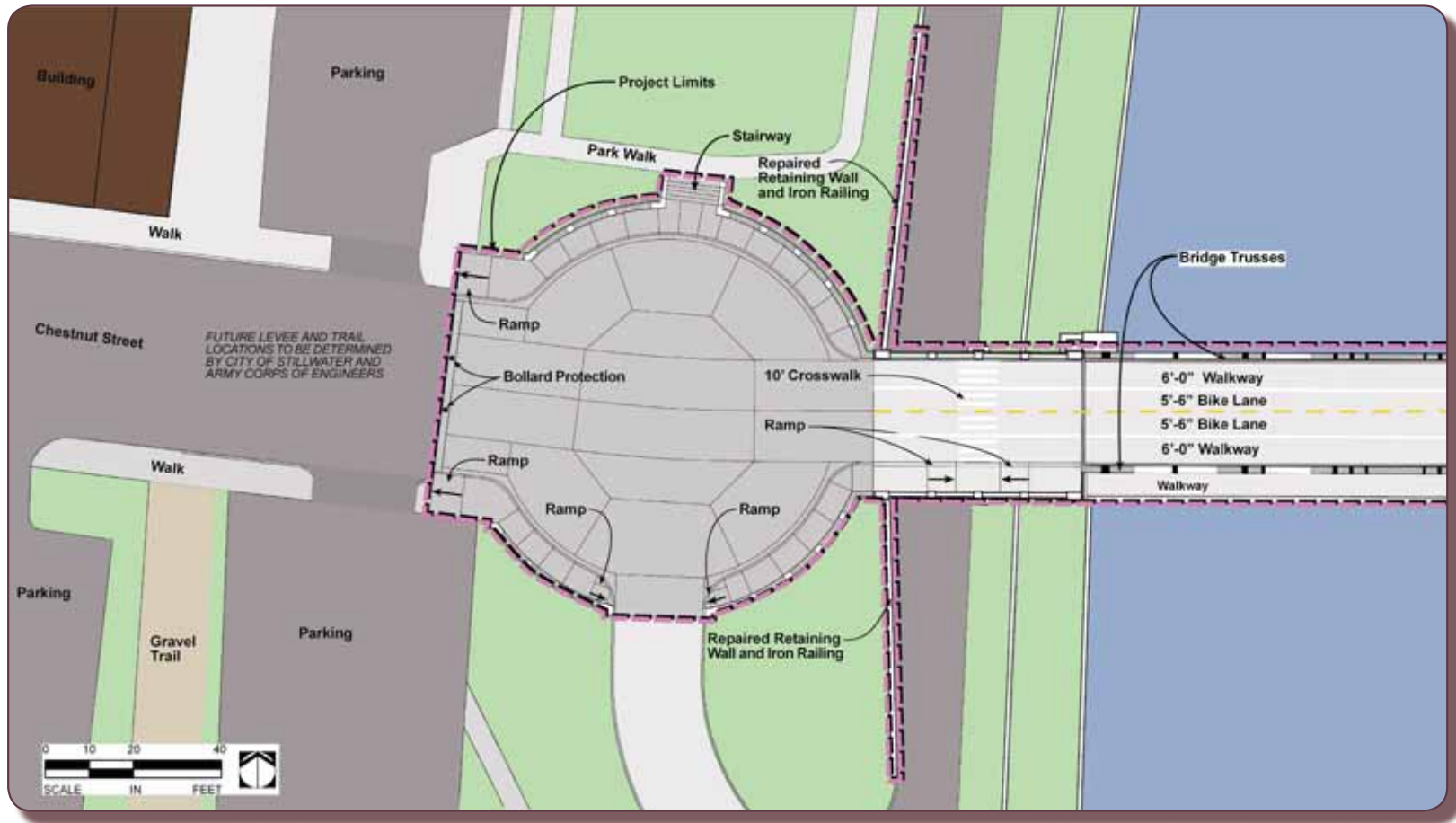
Counterweight Sheave

Concourse Visualization



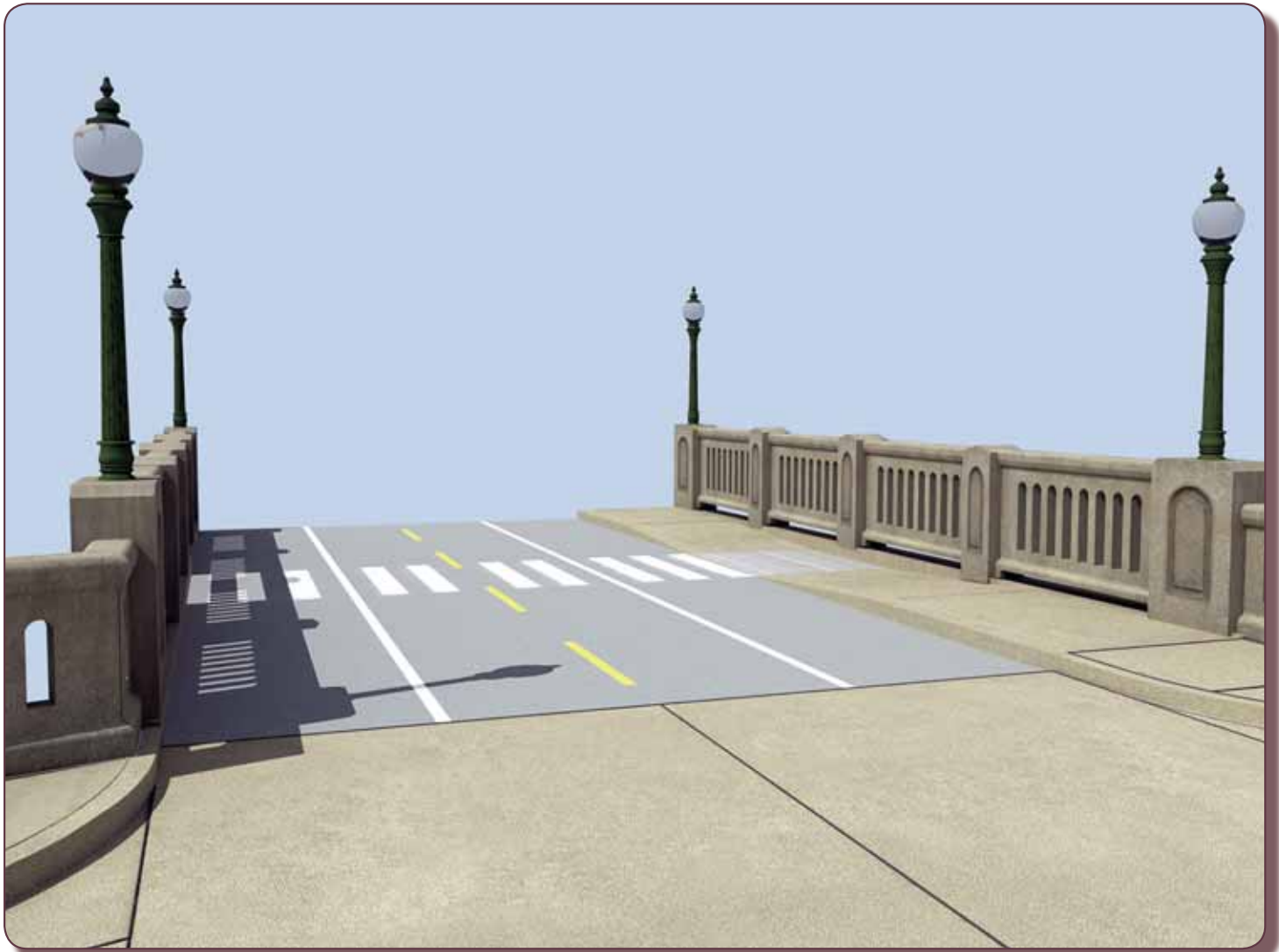
Historic Stillwater Lift Bridge
Management Plan and Repair Project

Concourse Plan View



Historic Stillwater Lift Bridge
Management Plan and Repair Project

View of Pedestrian and Bicycle Lane Markings and Crosswalk Markings on Bridge



Historic Stillwater Lift Bridge
Management Plan and Repair Project

View of Proposed Swing Gate to Prevent Access to Restricted Danger Zones Near the Counterweights and Lift Span



View of Plan for Lowering Sidewalk to Provide Access to Main Deck at Pedestrian Crosswalks



Historic Stillwater Lift Bridge
Management Plan and Repair Project

View of Bollards and Cables at Truss Openings Where No Crosswalks Are Planned



View of South Truss with Preferred Paint Colors for Truss and Railing



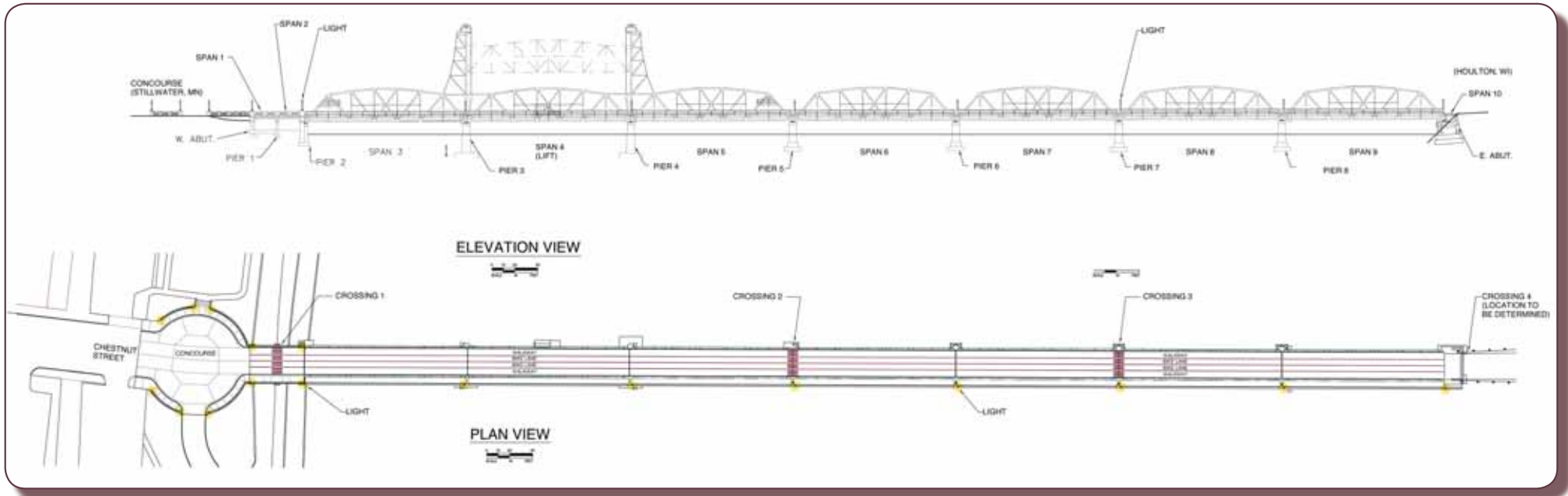
Historic Stillwater Lift Bridge
Management Plan and Repair Project

View of North Truss with Preferred Paint Color



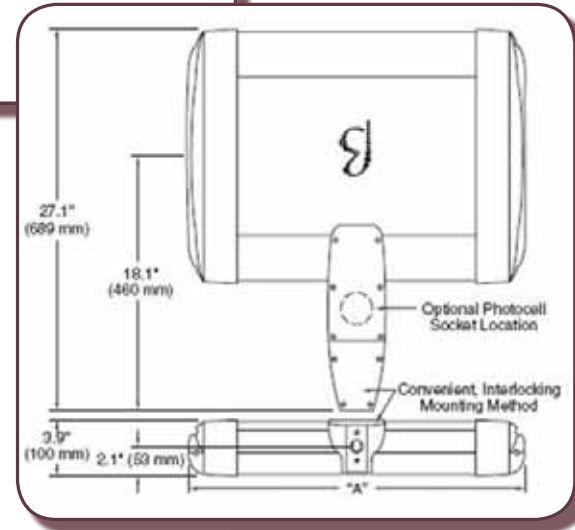
Historic Stillwater Lift Bridge
Management Plan and Repair Project

Bridge Elevation/Plan View

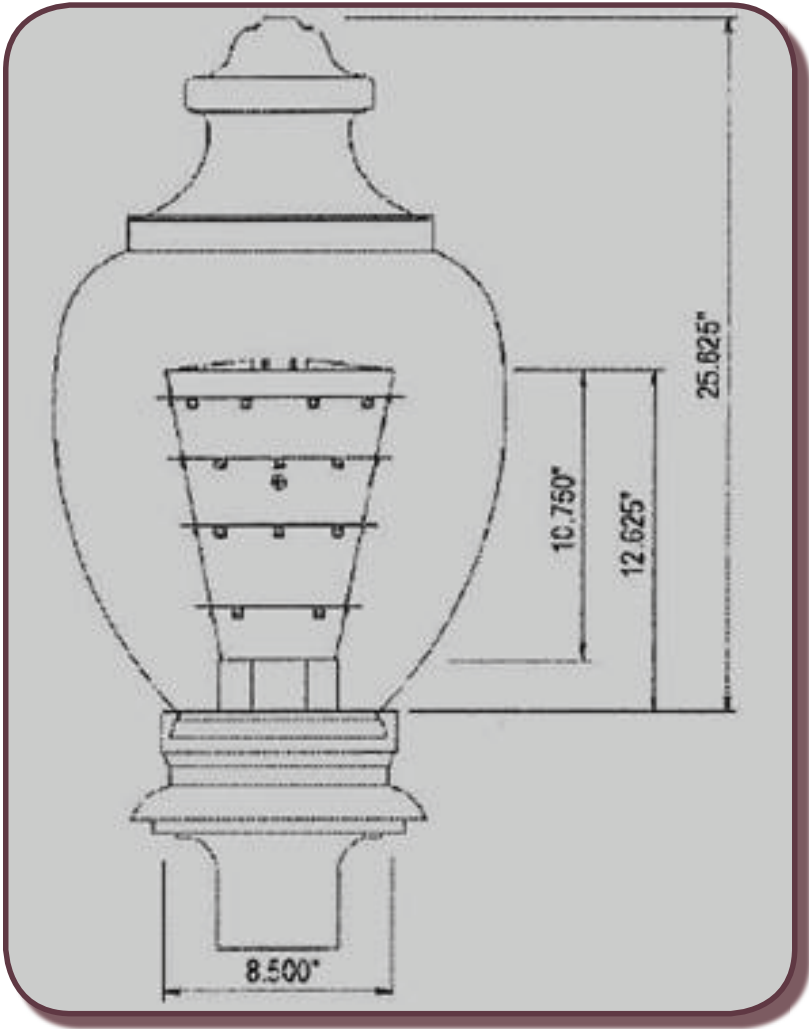


Historic Stillwater Lift Bridge
Management Plan and Repair Project

New Trail Lighting



New Decorative Lighting LED Acorn Lamp Inserts



Historic Stillwater Lift Bridge
Management Plan and Repair Project