

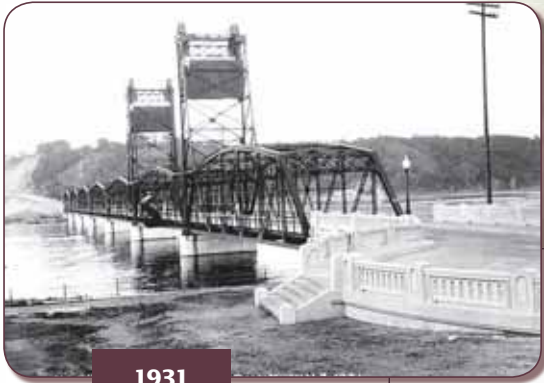


**Historic Stillwater Lift Bridge
Management Plan and Repair Project**

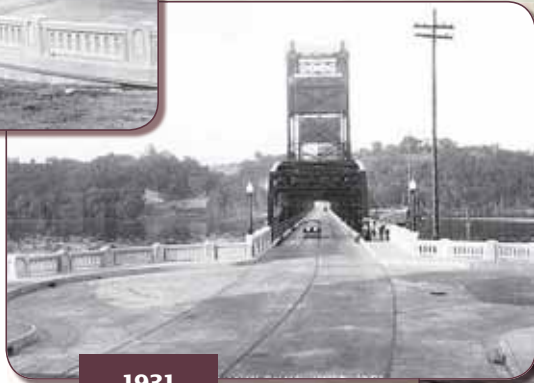




**Historic Stillwater Lift Bridge
Management Plan and Repair Project**



1931



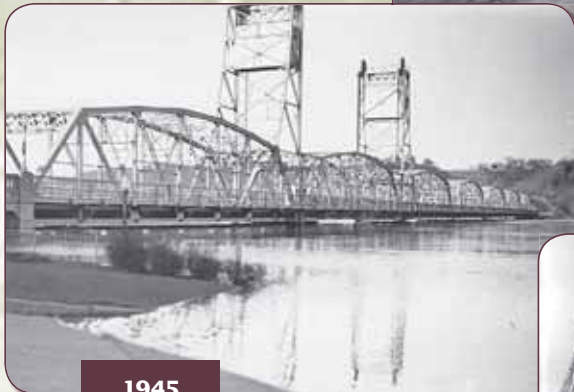
1931



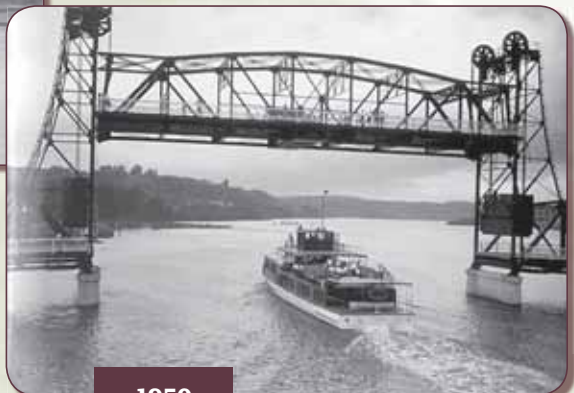
1931



1936



1945



1950

Sites and Districts in the National Register of Historic Places

- *Stillwater Lift Bridge and Concourse* (listed 1989)—Built in 1931, the bridge is a rare example of vertical-lift design in Minnesota.
- *Stillwater Commercial Historic District* (listed 1992)—Central business district and the concourse.
- *Stillwater Cultural Landscape District* (determined eligible 2001)—The historic and cultural resources in Minnesota and Wisconsin, including the Lift Bridge and the Commercial Historic District.



Historic Stillwater Lift Bridge
Management Plan and Repair Project

Character-Defining Features

Character-defining features are physical elements that represent the bridge's historical significance.

1. Vertical lift span and details.



2. Parker truss spans and details.



3. Concourse, spans 1 and 2.



Secretary of the Interior's *Standards for Treatment of Historic Properties*

Standards for Rehabilitation (applies to vertical lift and truss spans)—Repair or replace historic materials while preserving features that convey historical or architectural importance.



Standards for Restoration (applies to concourse and approach spans)—Preserve and restore materials from original construction.



Historic Stillwater Lift Bridge
Management Plan and Repair Project



Why Preserve the Lift Bridge?

- Listing on the National Register of Historic Places invokes federal preservation processes and standards for historic properties.
- Conversion for trail use provides resolution under federal environmental and preservation laws that apply to the St. Croix River Crossing Project.
- Preservation of the Stillwater Lift Bridge and 23 other premier historic bridges is a key part of Mn/DOT's streamlined federal review process for future bridge replacement projects.
- Keeping the Lift Bridge provides a Wisconsin-Minnesota connection for the future Loop Trail.



Lift Bridge Condition

Truss Spans



Corroded Sidewalk Support Bracket



Truss, Portal Member—Steel Section Loss



Corroded Areas of Lower Truss Chord



North Railing—Bent and Corroded Members

Lift Bridge Condition

Concrete

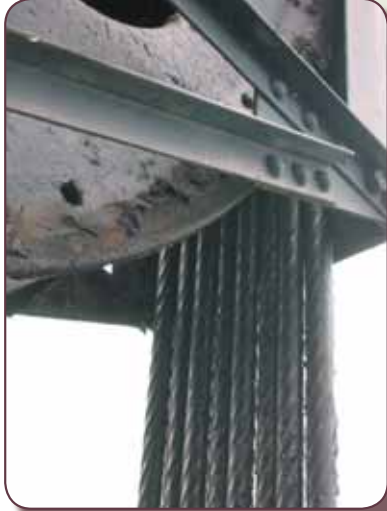


Span 1 Ballustrade—Concrete Spalling



Pier 8—Concrete Deterioration

Mechanical

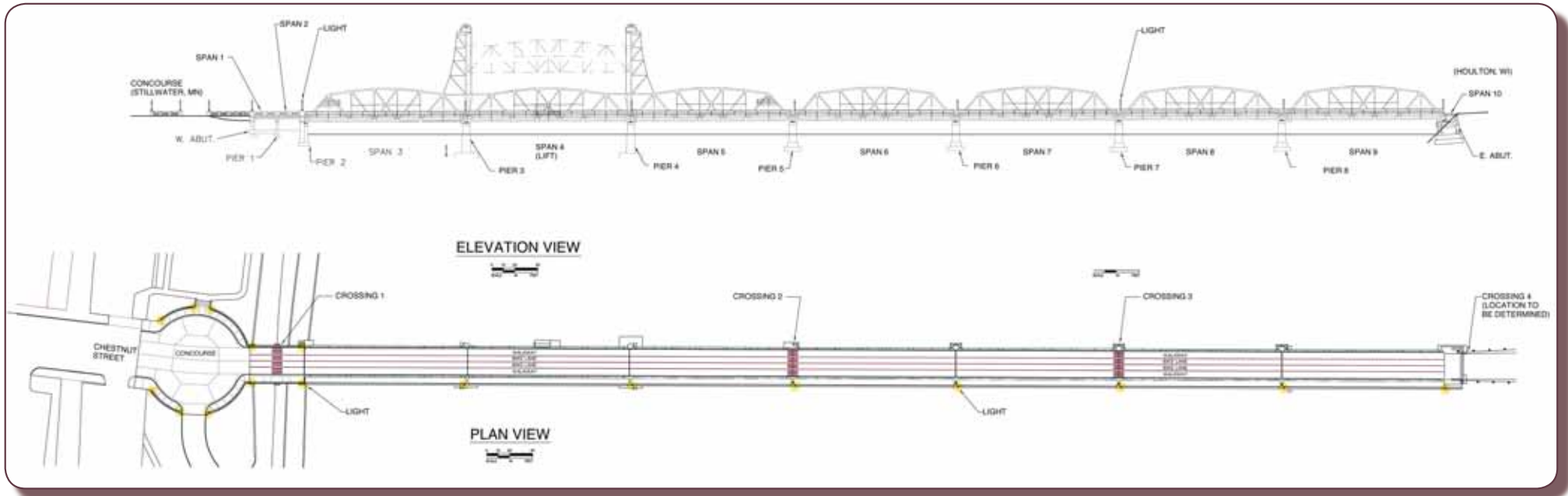


Worn Counterweight Cables



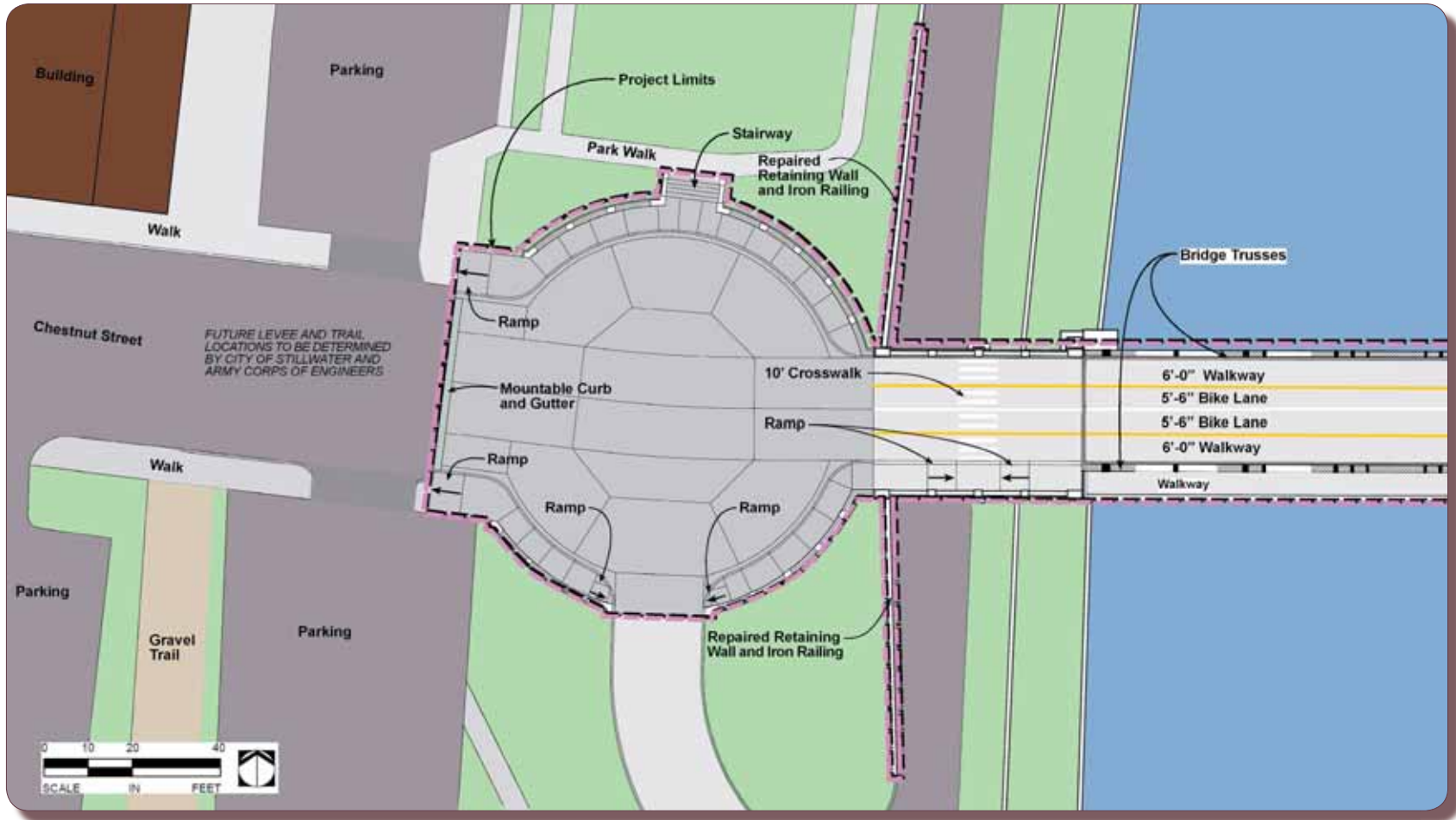
Counterweight Sheave

Bridge Elevation/Plan View



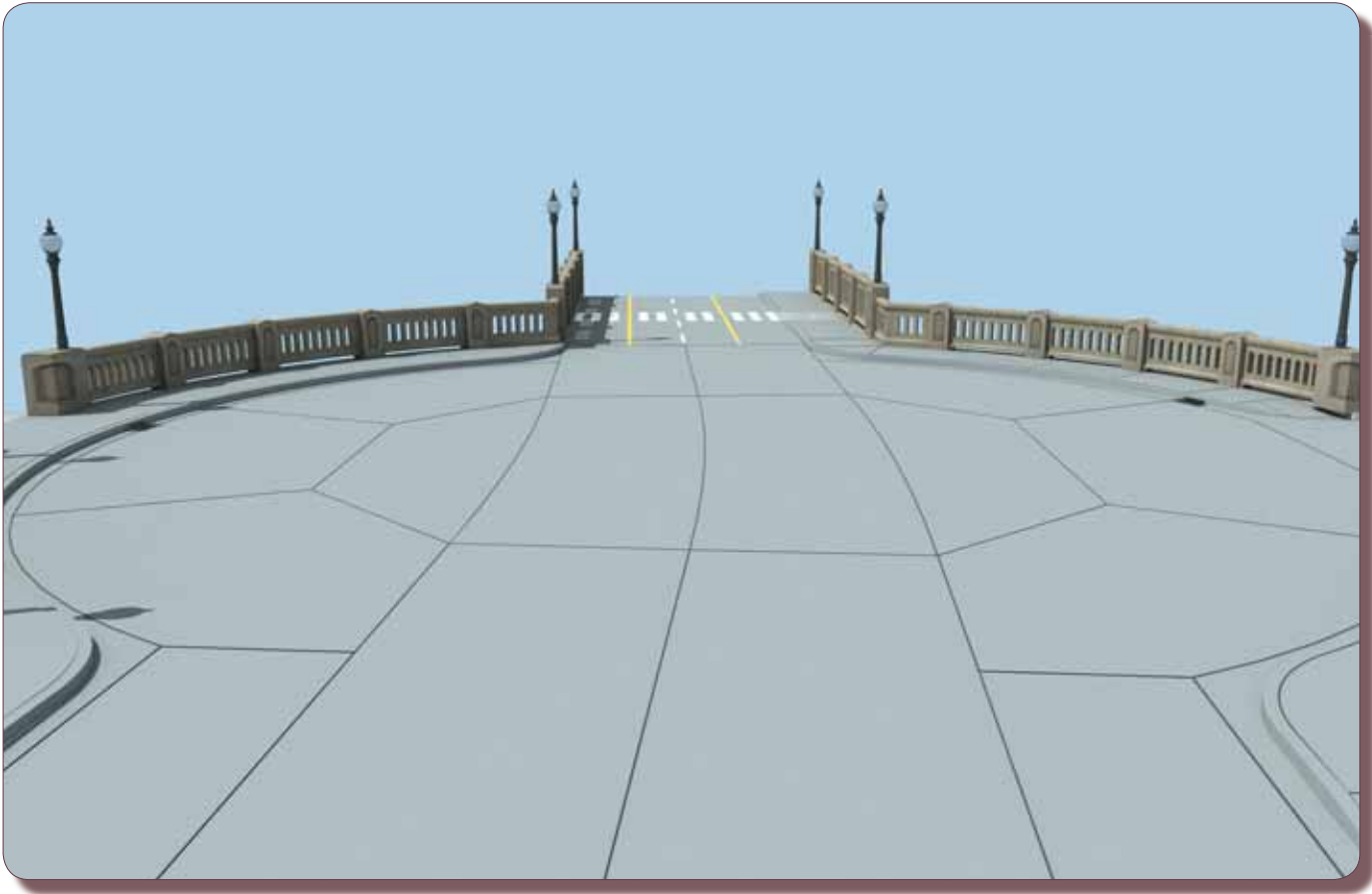
Historic Stillwater Lift Bridge
Management Plan and Repair Project

Concourse Plan View



Historic Stillwater Lift Bridge
Management Plan and Repair Project

Concourse Visualization



South Sidewalk Lowering Visualization

Approach Span View



Historic Stillwater Lift Bridge
Management Plan and Repair Project

South Sidewalk Lowering Visualization

Deck View



South Sidewalk Lowering Visualization

River View



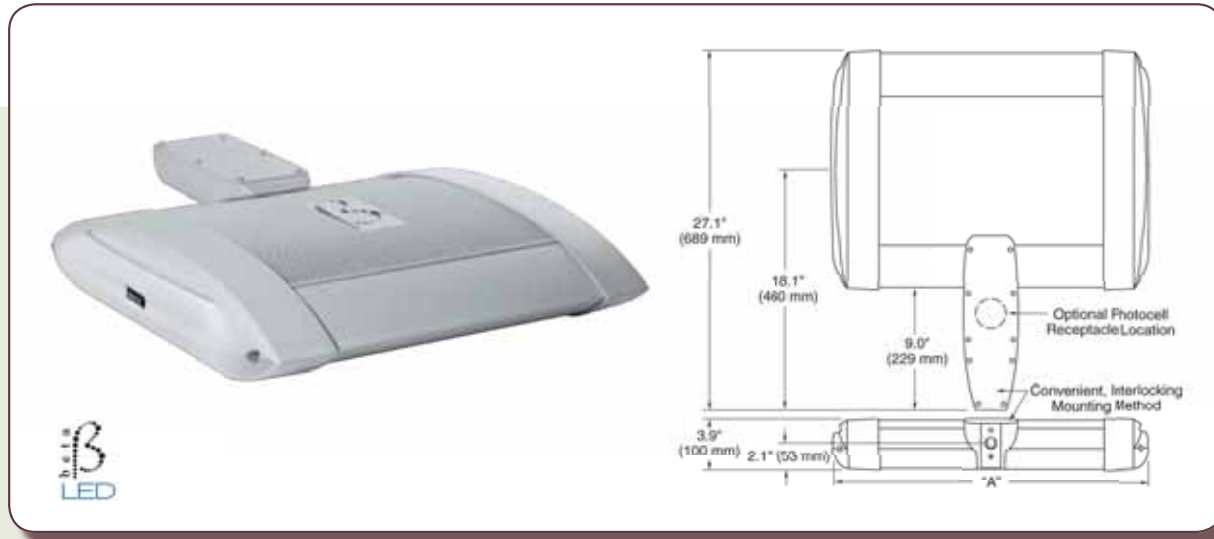
Historic Stillwater Lift Bridge
Management Plan and Repair Project

North Railing Visualization



Historic Stillwater Lift Bridge
Management Plan and Repair Project

Functional Trail Lighting



Wall Mount



Bar Mount

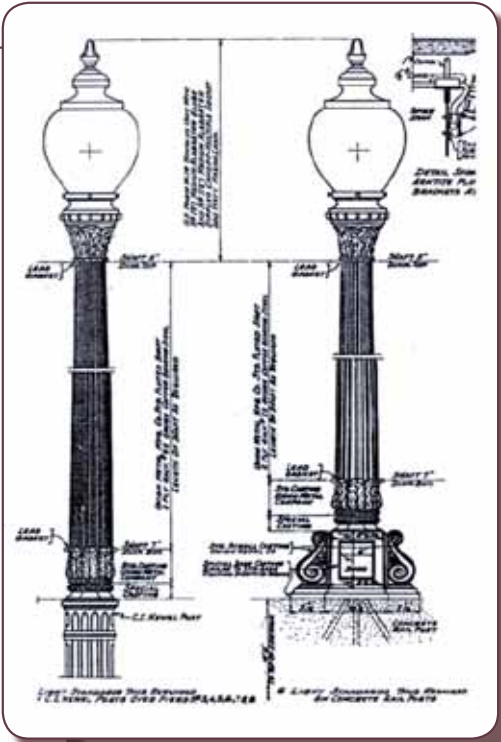
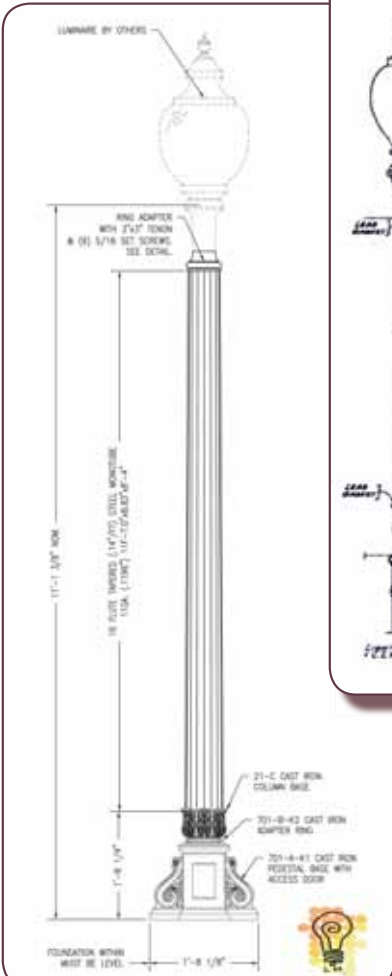


Pole Mount

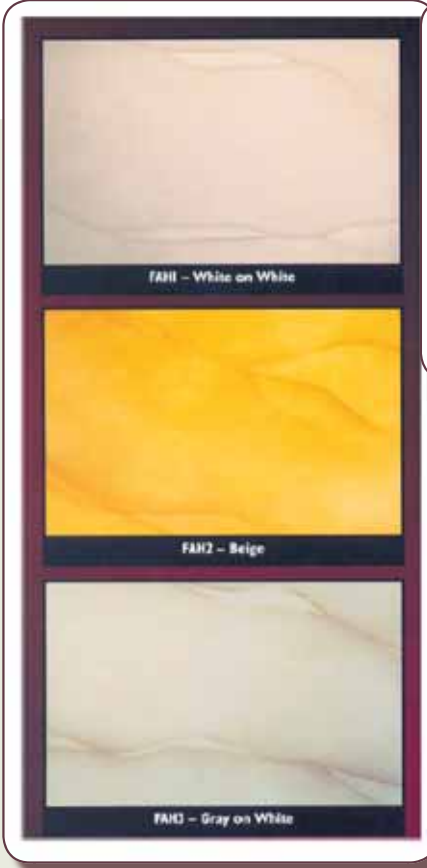


**Historic Stillwater Lift Bridge
Management Plan and Repair Project**

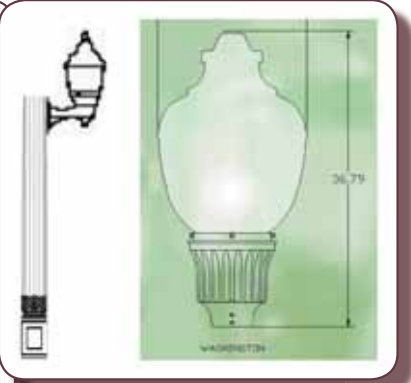
New Decorative Lighting



Pole tops



Faux alabaster finishes



Luminaire