

Sample Plan

SPECIAL ENVIRONMENTAL PLAN ----- NARRATIVE

Reference:

Road Design Manual: Chapter 11-8.0

Design Scene: Chapter 3 - Details
Chapter 8 - Removals

Technical Memorandum No. 12-05-ENV-01 Regulated Waste Disposal: MnDOT Approved Procedures and End Sites
Technical Memorandum No. 13-16-ENV-03 Abandon Container(s) on MnDOT Rights of Way
Technical Memorandum No. 14-06-ENV-01 Storm Water Infiltration System Location Guidelines for MnDOT ROW

Miscellaneous: <http://www.dot.state.mn.us/environment/regulatedmaterials/index.html>
Waste management and approved end sites

Memo dated April 22, 2010 re: Removal of Guardrail Post Concrete Anchors

<http://lhub.metro/design/technicalguidance.html> Asbestos Process

General Information:

When removing corrugated steel pipe on a project, check earlier plans to see if the pipe has the designation for asbestos bonding (AB-CS). It is important to identify such pipe as early in the plan preparation stage as possible. Asbestos is considered a hazardous material and may require special handling. Contact Environmental Stewardship Unit for assistance.

Any contaminated soils must be identified and properly disposed of using the most recent Environmental Services guidelines available.

When removing a building, a hazardous materials assessment is required. Underground tanks and wells, asbestos, fluorescent lights, etc. on the property must be identified and properly removed or capped using the most recent guidelines. This information is coordinated through the District Office of Right of Way.

The designer is reminded that there is a Special Provision for the recovery of materials: (2103) Construction Waste Management & Debris Recycling Requirements.

The following is an example of a tabulation showing how the specific items should be included in the Plan.

| BUILDING REMOVALS | | | | |
|--------------------------|--------------|----------|------------|-------|
| ITEM | PARCEL ID | UNIT | QUANTITIES | NOTES |
| BUILDING REMOVAL A | (A) | LUMP SUM | 1 | (1) |
| BUILDING REMOVAL B | (B) | LUMP SUM | 1 | (2) |
| BUILDING REMOVAL C | (C) | LUMP SUM | 1 | (3) |
| BUILDING REMOVAL D | (D) | LUMP SUM | 1 | (4) |
| BUILDING REMOVAL E | (E) | LUMP SUM | 1 | (5) |
| DISCONNECT SEWER SERVICE | (A)(B)(C)(D) | EACH | 4 | (6) |
| DISCONNECT WATER SERVICE | (A)(B)(C)(D) | EACH | 4 | (7) |
| REMOVE CONCRETE RUBBLE | (C) | CU. YD. | 1,741 | (8) |
| REMOVE CHAIN LINK FENCE | (B) | LIN FT | 27 | (9) |

NOTES:

- (1) REMOVE 1612 SQ.FT. 1 STORY POLE BUILDING.
- (2) REMOVE 120 SQ.FT. 1 STORY CONCRETE BLOCK BATHHOUSE.
- (3) REMOVE 47,895 SQ.FT. 3 STORY CONCRETE BLOCK BUILDING.
- (4) REMOVE 22,550 SQ.FT. 1 STORY CONCRETE BLOCK BUILDING.
- (5) REMOVE APPROXIMATELY 12,480 SQ.FT. 1 STORY STEEL BUILDING.
- (6) DISCONNECT SEWER AT CURB, CAP AND PLUG.
- (7) DISCONNECT WATER AT MAIN, CAP AND PLUG.
- (8) CONSISTS MAINLY OF CONCRETE AND MISCELLANEOUS DEBRIS.
- (9) 6' HEIGHT.

Sample Plan

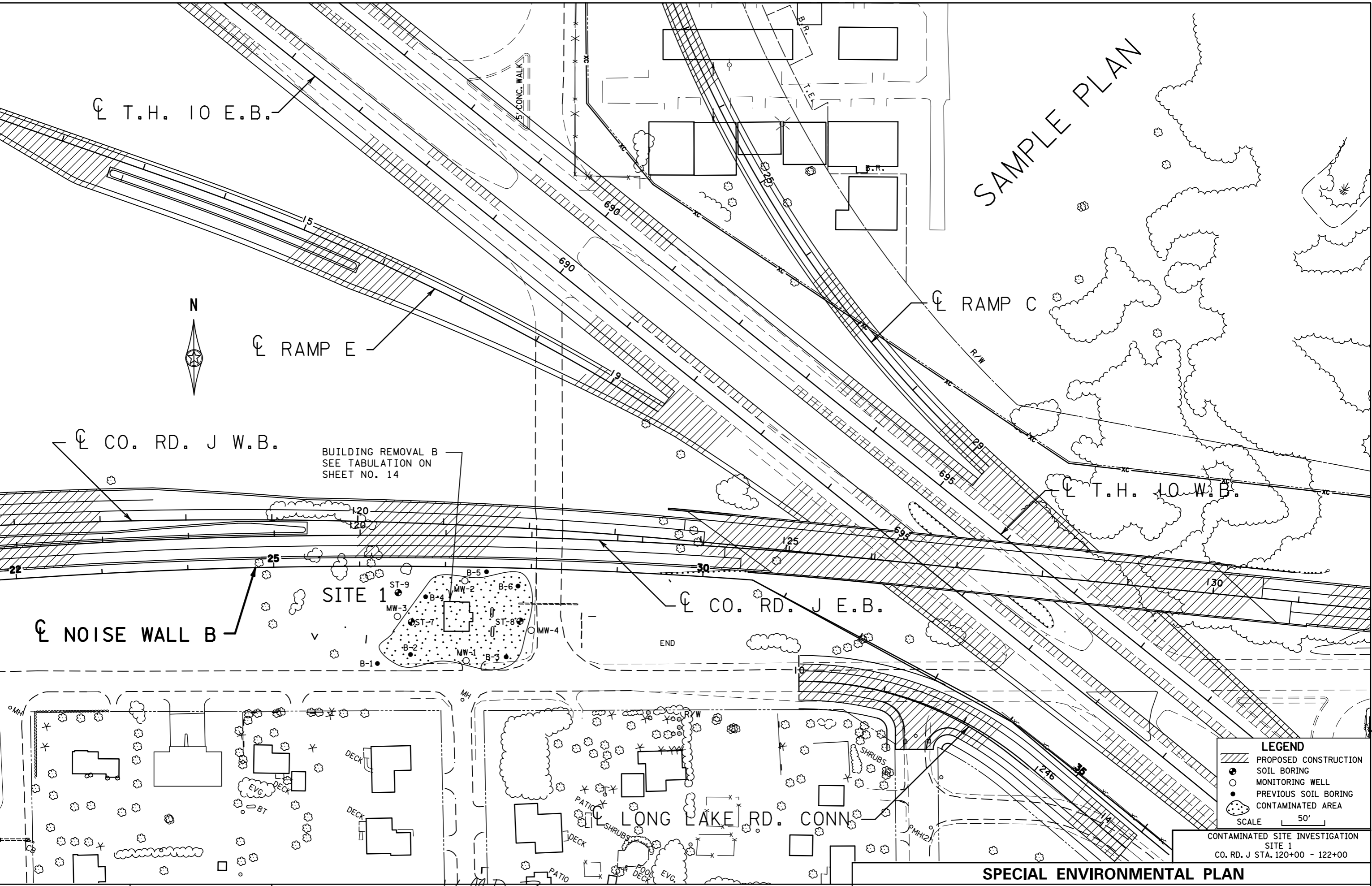
SPECIAL ENVIRONMENTAL PLAN ----- CHECKLIST

- ___ 1. Make sure areas of concern are clearly marked on plan sheet
- ___ 2. Cross check all tabs against plan sheet
- ___ 3. Scale
- ___ 3. Cross references to other sheets (as applicable)
- ___ 5. Drawn by: and Checked by: Initials and Engineer's signature

REVISION DATE 02/08/13
PLOTTED/REVISED: 26-JAN-2017 08:21

DISTRICT #: METRO
PLOT NAME: spenvliron
FILENAME: Projects\DM_R0S\Non_Project\Design\SamplePlan\Eng\lsh\envliron.dgn

DISTRICT #: METRO
PLOT NAME: spenvliron
FILENAME: Projects\DM_R0S\Non_Project\Design\SamplePlan\Eng\lsh\envliron.dgn



SAMPLE PLAN



BUILDING REMOVAL B
SEE TABULATION ON
SHEET NO. 14

| LEGEND | |
|-----------|-----------------------|
| | PROPOSED CONSTRUCTION |
| | SOIL BORING |
| | MONITORING WELL |
| | PREVIOUS SOIL BORING |
| | CONTAMINATED AREA |
| SCALE 50' | |

CONTAMINATED SITE INVESTIGATION
SITE 1
CO. RD. J STA. 120+00 - 122+00

SPECIAL ENVIRONMENTAL PLAN

DRAWN BY: CT

CHECKED BY: HS

CERTIFIED BY

Will D. Zire
LICENSED PROFESSIONAL ENGINEER

LIC. NO. 00000 DATE 2/01/99

STATE PROJ. NO. 0000-00 (T.H. 00) SHEET NO. 28 OF 84 SHEETS