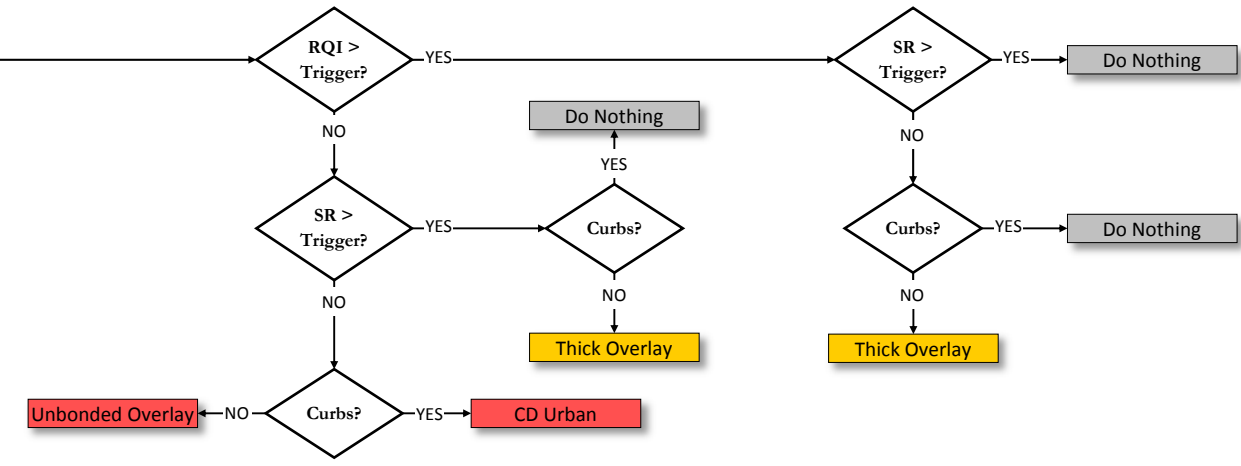


Network Level Concrete Decision Tree



Details of Network Level Concrete Decision Tree

List of Treatments on the Concrete Decision Tree

- Do Nothing
- Preventive Maintenance Treatments**
 - Joint Seal
 - Plane
 - Minor CPR
 - Minor CPR & Plane
- Rehabilitation Treatments**
 - Thick Overlay (bituminous thickness > 4 inches)
 - Major CPR
 - Major CPR & Plane
- Reconstruction Treatments**
 - Unbonded Overlay
 - Concrete Doweled (CD), urban design section

Trigger Values by Functional Classification

Principal Arterial (PA)	RQI	SR
Rural Interstate	3.0	2.7
Urban Interstate	3.1	2.7
Urban Principal Arterial Freeway	3.1	2.7
Rural Principal Arterial	3.0	2.7
Urban Principal Arterial	2.8	2.5
Non-Principal Arterial (NPA)	RQI	SR
Rural Minor Arterial	2.8	2.5
Rural Major Collector	2.8	2.5
Rural Minor Collector	2.8	2.5
Rural Local	2.7	2.4
Urban Minor Arterial	2.7	2.4
Urban Collector	2.6	2.4
Urban Local	2.5	2.4

RQI = Ride Quality Index the roughness of the road correlated to the collected IRI; a 0.0 to 5.0 scale with 5.0 being perfectly smooth)

SR = Surface Rating (the index describing the amount, type and severity of surface defects on a 0.0 to 4.0 scale, with 4.0 being without defects)

- (a) CRC?** = pavement type of Continuously Reinforced Concrete
- (b) Severe Spalling ≥ 50% or Load Related Distress > 20%** = (High Severity Transverse Joint Spalling ≥ 50%, or High Severity Longitudinal Joint Spalling ≥ 50%, or Broken Panels ≥ 20% or Patched Panels ≥ 20%, or D-Cracked Panels ≥ 20%, or High Severity Transverse and Longitudinal Joint Spalling ≥ 25%)
- (c) Severe Spalling ≥ 20% or Slight Spalling ≥ 50%?** = (High Severity Transverse Joint Spalling ≥ 20%, or High Severity Longitudinal Joint Spalling ≥ 20%, Low Severity Transverse Joint Spalling ≥ 50%, or Low Severity Longitudinal Joint Spalling ≥ 50%, or High Severity Transverse and Longitudinal Joint Spalling ≥ 10%, or Low Severity Transverse and Longitudinal Joint Spalling ≥ 25%)
- (d) Severe Spalling ≥ 5% or Slight Spalling ≥ 20%?** = (High Severity Transverse Joint Spalling ≥ 5%, or High Severity Longitudinal Joint Spalling ≥ 5%, or High Severity Transverse and Longitudinal Joint Spalling ≥ 2.5%, or Low Severity Transverse Joint Spalling ≥ 20%, or Low Severity Longitudinal Joint Spalling ≥ 20%, or Low Severity Transverse and Longitudinal Joint Spalling ≥ 10%)
- (e) Slight Spalling > 10%?** = (Low Severity Transverse Joint Spalling > 10%, or Low Severity Longitudinal Joint Spalling > 10%, or Low Severity Transverse and Longitudinal Joint Spalling > 5%)