

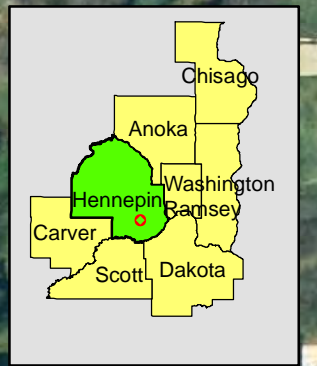
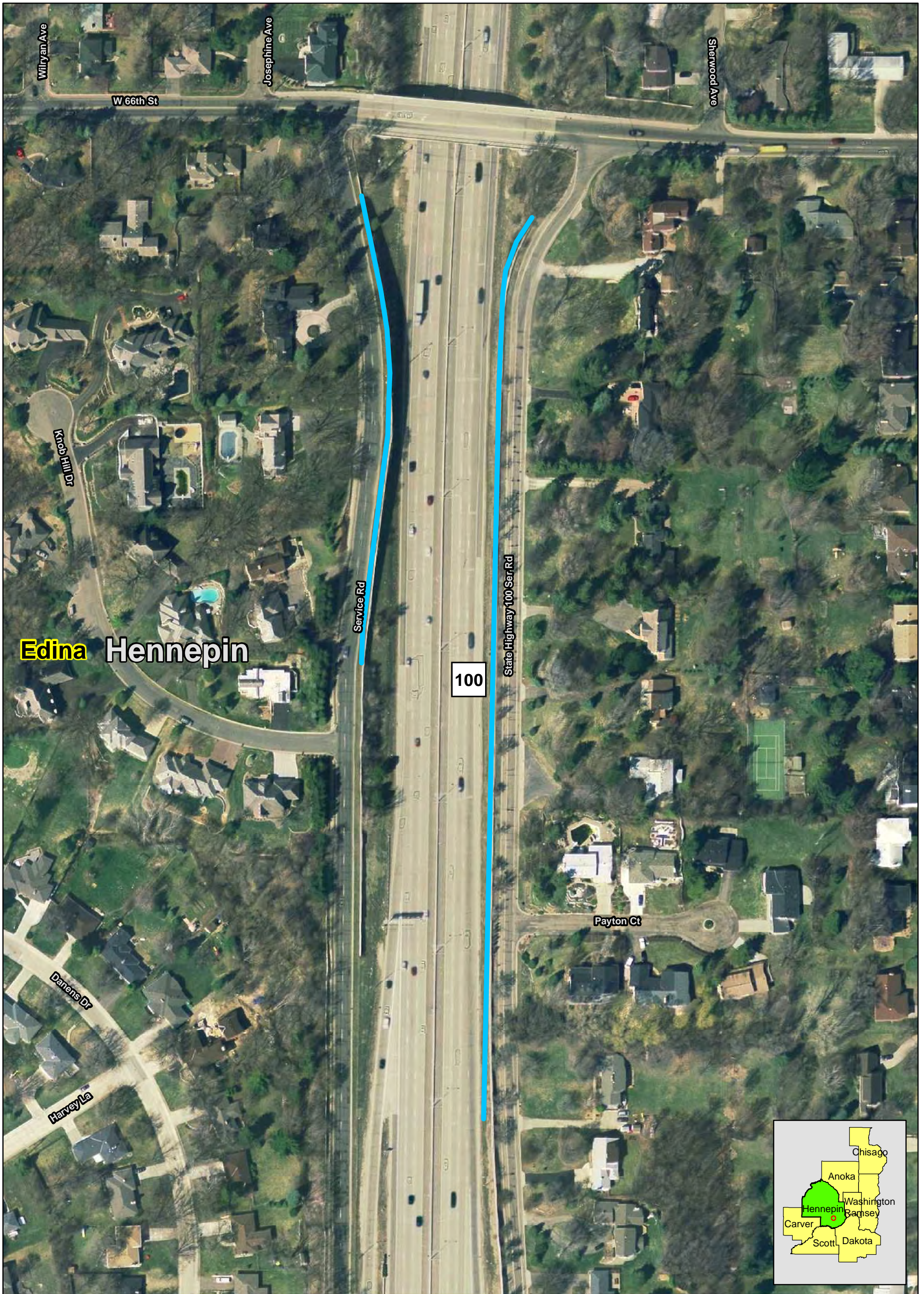


**Legend**

- MSE Type Walls
- Special Design Embankments

**MSE Walls**  
**Along all exit/entrance ramps at the**  
**Hanson Blvd. bridge over TH 10**  
**in Coon Rapids**  
**SP 0215-59**



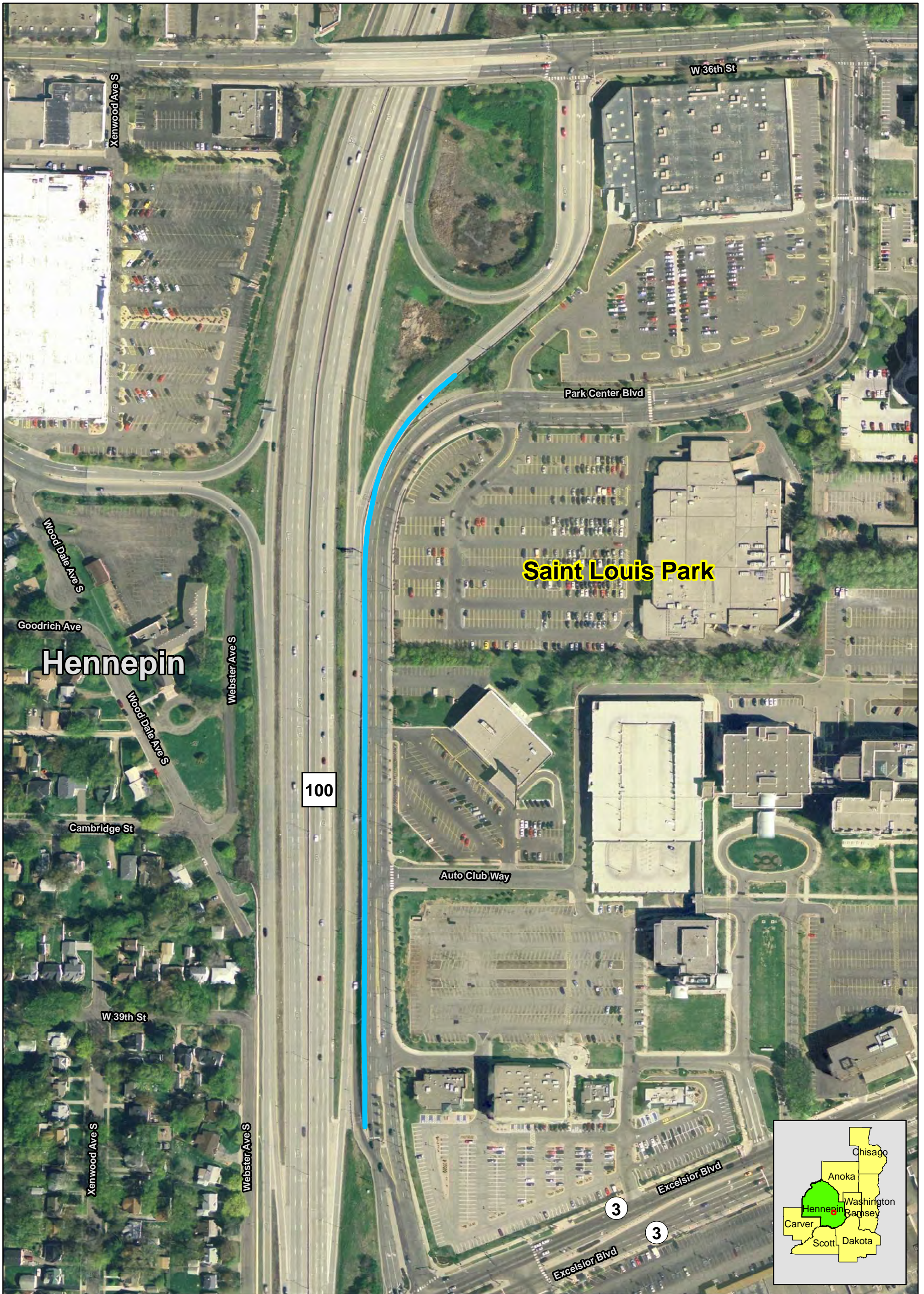


**Legend**

- MSE Type Walls
- Special Design Embankments

**Cantilever Walls  
 Along NB & SB TH 100 between  
 66th & 70th Streets in Edina  
 SP 2733-61**





**Legend**

- MSE Type Walls
- Special Design Embankments

**MSE Wall  
 Along NB TH 100 and Park Center Blvd. between  
 Excelsior Blvd. and 36th St. in St. Louis Park  
 SP 2734-28**





Hennepin

Golden Valley

100

Lilac Dr N

Thotland Rd

Unity Ave N

Lilac Drive

Holiday La

State Highway 100 Frt



Legend

- MSE Type Walls
- Special Design Embankments

**Modular Block Walls  
 Along Lilac Dr. NW of the TH 55/TH 100  
 interchange; and along Lilac Dr. east of NB TH 100,  
 just south of Thotland Road in Golden Valley  
 SP 2735-134**

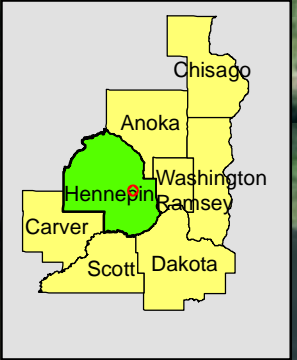




**Golden Valley**

**Hennepin**

**Lilac Drive**

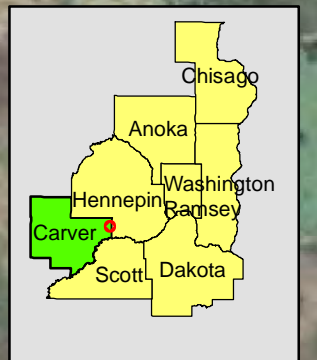
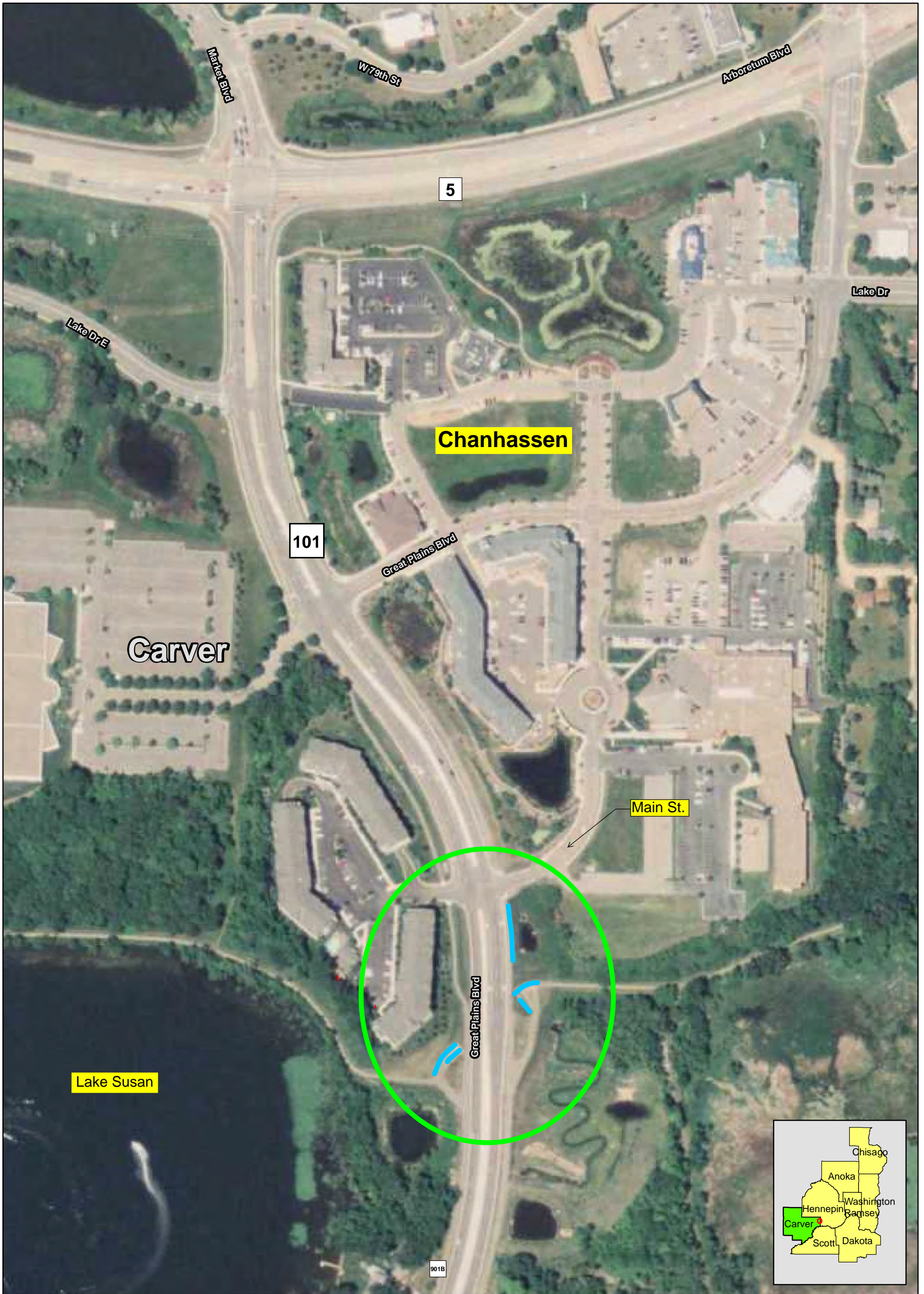


**Legend**

- MSE Type Walls
- Special Design Embankments

**Modular Block Wall  
 Along Lilac Dr. at the corner east of TH 100,  
 south of TH 55 and north of the RR tracks  
 in Golden Valley  
 SP 2735-134**



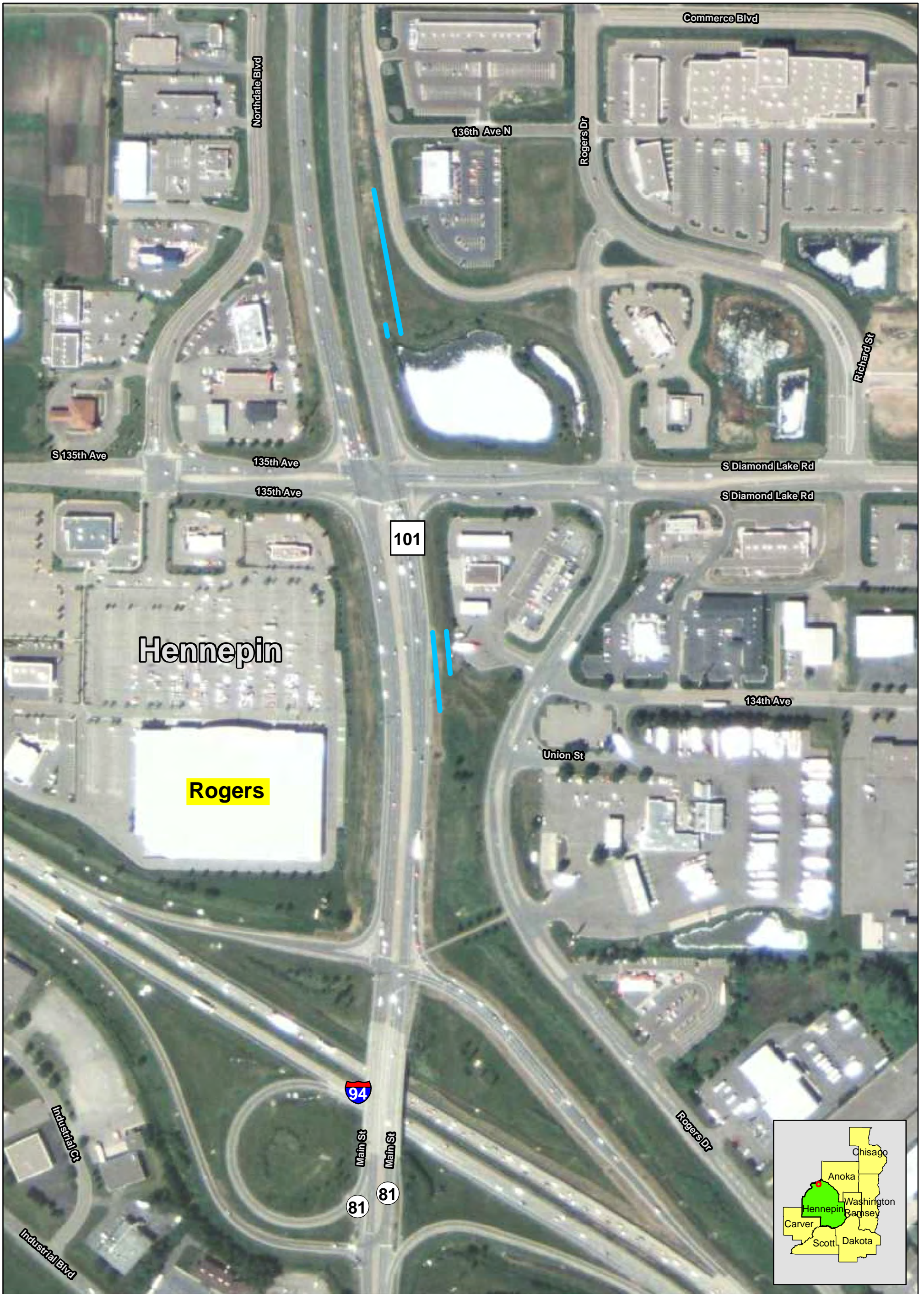


**Legend**

- MSE Type Walls
- Special Design Embankments

**Modular Block Walls**  
**At both ends of bike/walking path underpass**  
**and along the east side of TH 101 between**  
**Lake Susan and Main St. in Chanhassen**  
**SP 1009-16**





**Legend**

- MSE Type Walls
- Special Design Embankments

**MSE Walls**  
**Along future flyover ramp from**  
**WB TH 94 to NB TH 101 in Rogers**  
**SP 2780-75**





**Legend**

- MSE Type Walls
- Special Design Embankments

**MSE Walls**  
**TH 169 realignment at CSAH 81**  
**and CSAH 109 in Brooklyn Park**  
**SP 2750-57**







**Legend**

- MSE Type Walls
- Special Design Embankments

**Soldier Pile Wall**  
**Along entrance ramp from Pioneer Trail**  
**to NB TH 169 in Bloomington**  
**SP 2776-02**



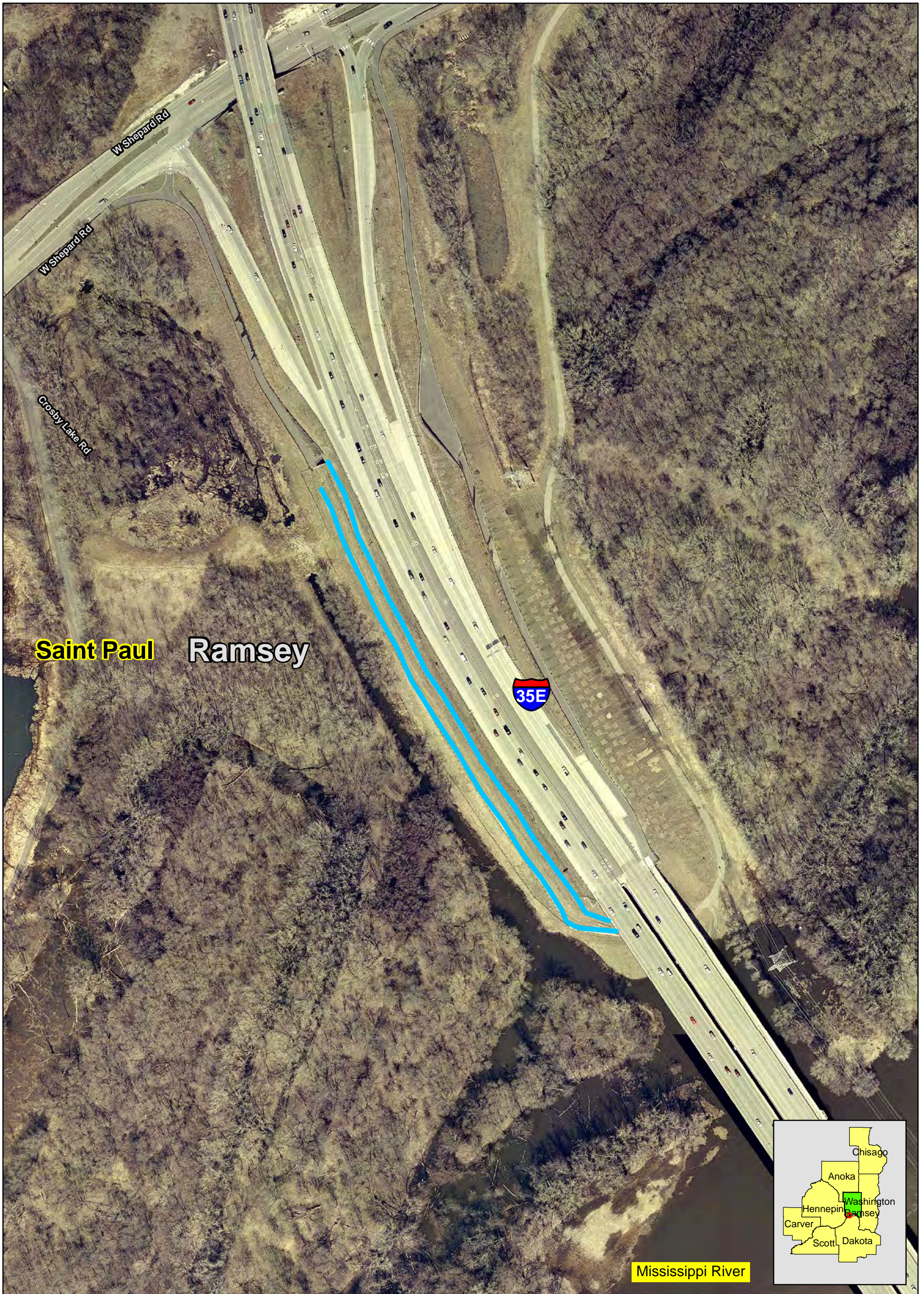


**Legend**

- MSE Type Walls
- Special Design Embankments

**Modular Block Walls**  
 Along SB TH 169 approx. 550' NE of TH 25,  
 and along entrance ramp from TH 25 to  
 SB TH 169 in Belle Plaine  
 SP 7008-45





**Saint Paul**   **Ramsey**

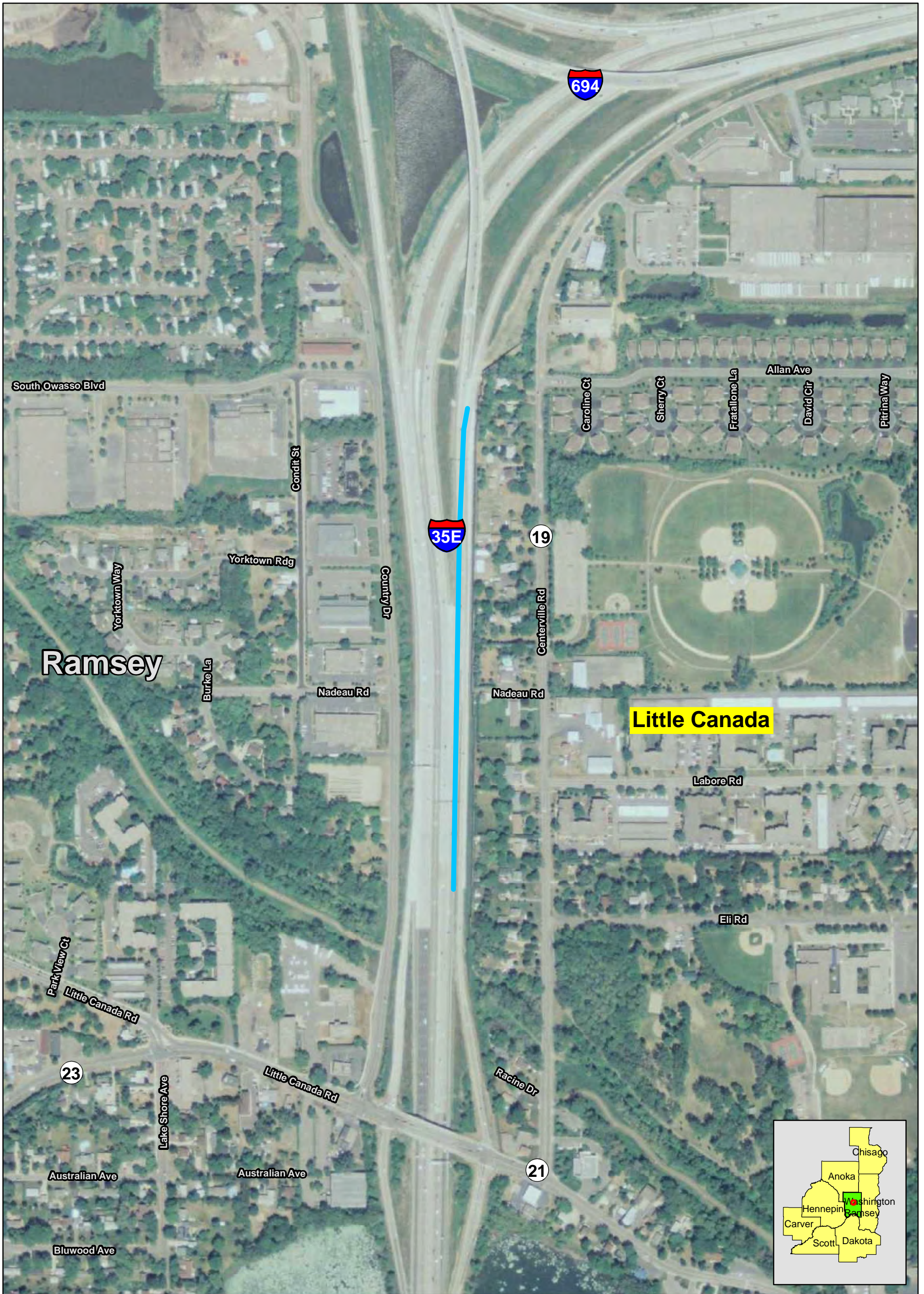
**Mississippi River**

**Legend**

- MSE Type Walls
- Special Design Embankments

**Gabion Wall and Reinforced Earth Wall  
Along SB 35E between Shepard Rd. and the  
north end of Mississippi River bridge in St. Paul  
SP 1982-129**





**Legend**

- MSE Type Walls
- Special Design Embankments

**Soldier Pile Wall**  
**Approx. 1000' north of Little Canada Rd.,**  
**and east of NB TH 35E in Little Canada**  
**SP 6280-304**



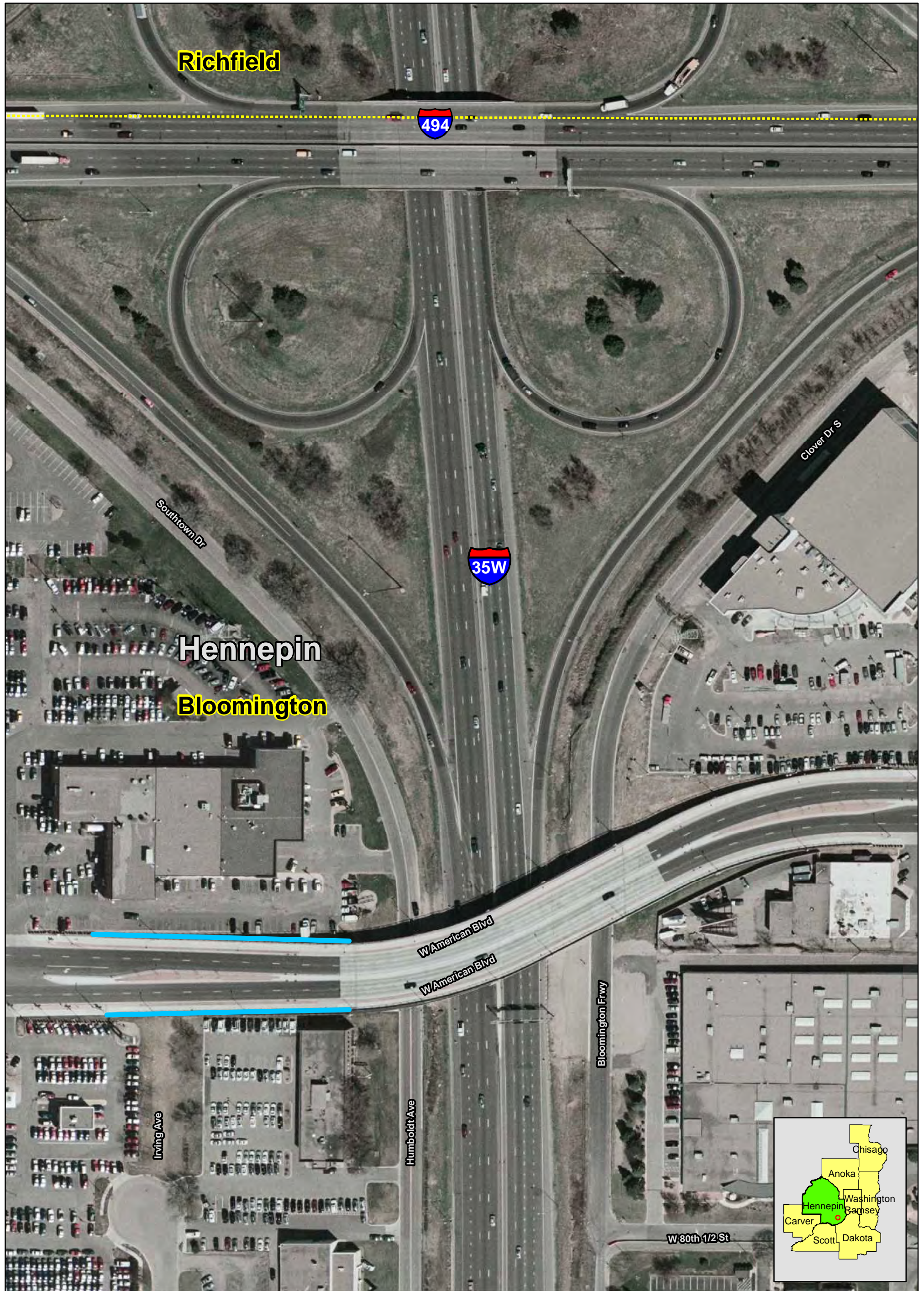


**Legend**

- MSE Type Walls
- Special Design Embankments

**MSE Walls**  
 South of 95th Ave. (Co. Rd. 52) and west  
 of TH 35W, and along exit ramp from  
 SB TH 35W to 95th Ave. in Blaine  
 SP 0280-50





**Legend**

- MSE Type Walls
- Special Design Embankments

**Retaining Walls with Tiebacks  
 NW & SW corners of American Ave.  
 (W 80th/79th Ave.) bridge over TH 35W  
 in Bloomington  
 SP 2782-277**



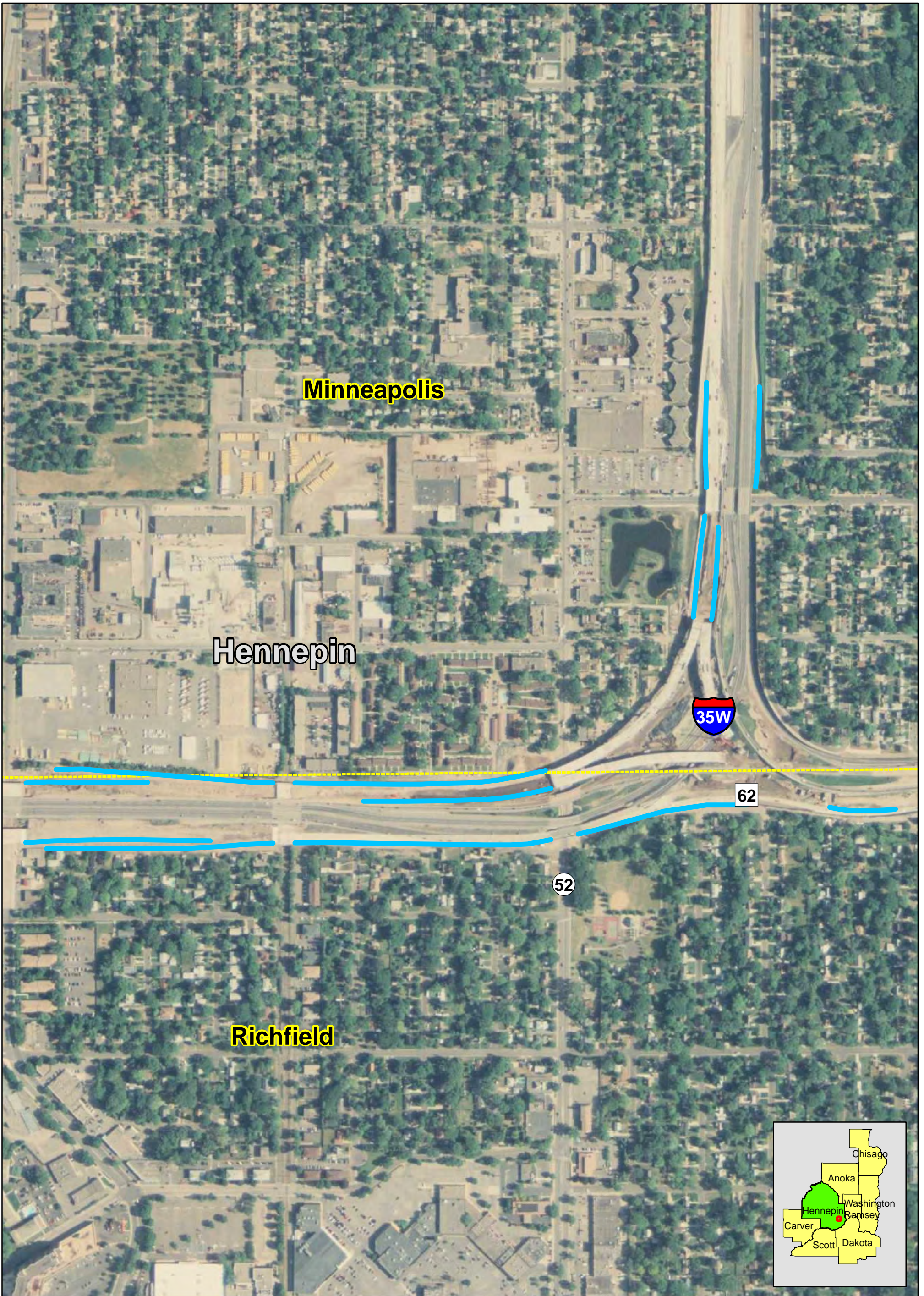


**Legend**

- MSE Type Walls
- Special Design Embankments

**MSE Walls  
 TH 35W/TH 62 Crosstown reconstruction  
 in Minneapolis and Richfield  
 Map #1  
 SP 2782-281**





**Minneapolis**

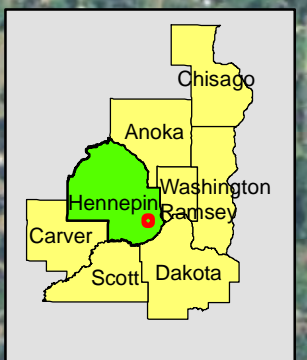
**Hennepin**

**Richfield**





62

52



**Legend**

-  MSE Type Walls
-  Special Design Embankments

**MSE Walls**  
**TH 35W/TH 62 Crosstown reconstruction**  
**in Minneapolis and Richfield**  
**Map #2**  
**SP 2782-281**





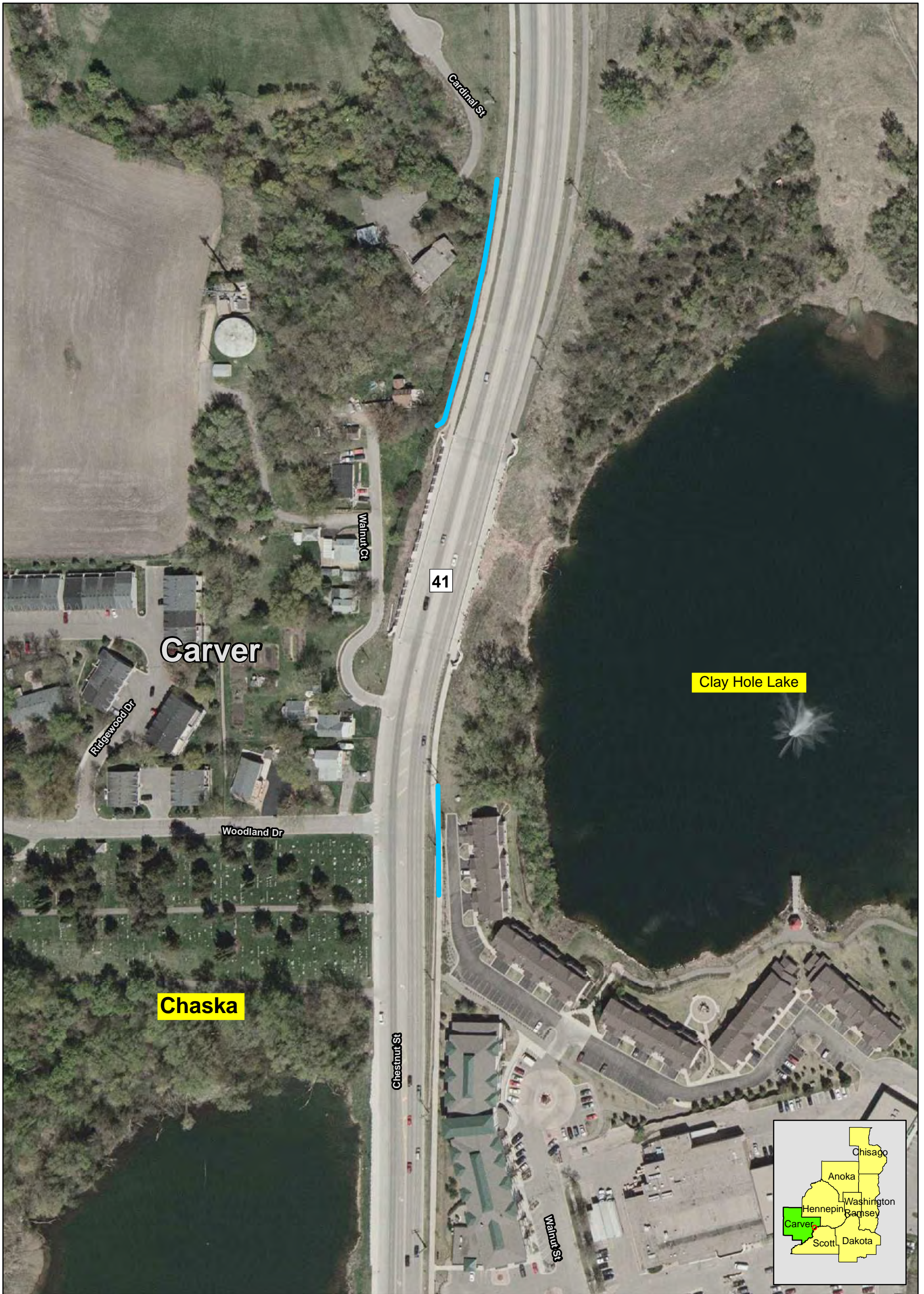


**Legend**

- MSE Type Walls
- Special Design Embankments

**Modular Block Wall**  
 West of TH 41 and approx. 400' north of the  
 TH 41/CSAH 61 (6th St.) intresection in Chaska  
 SP 1008-51



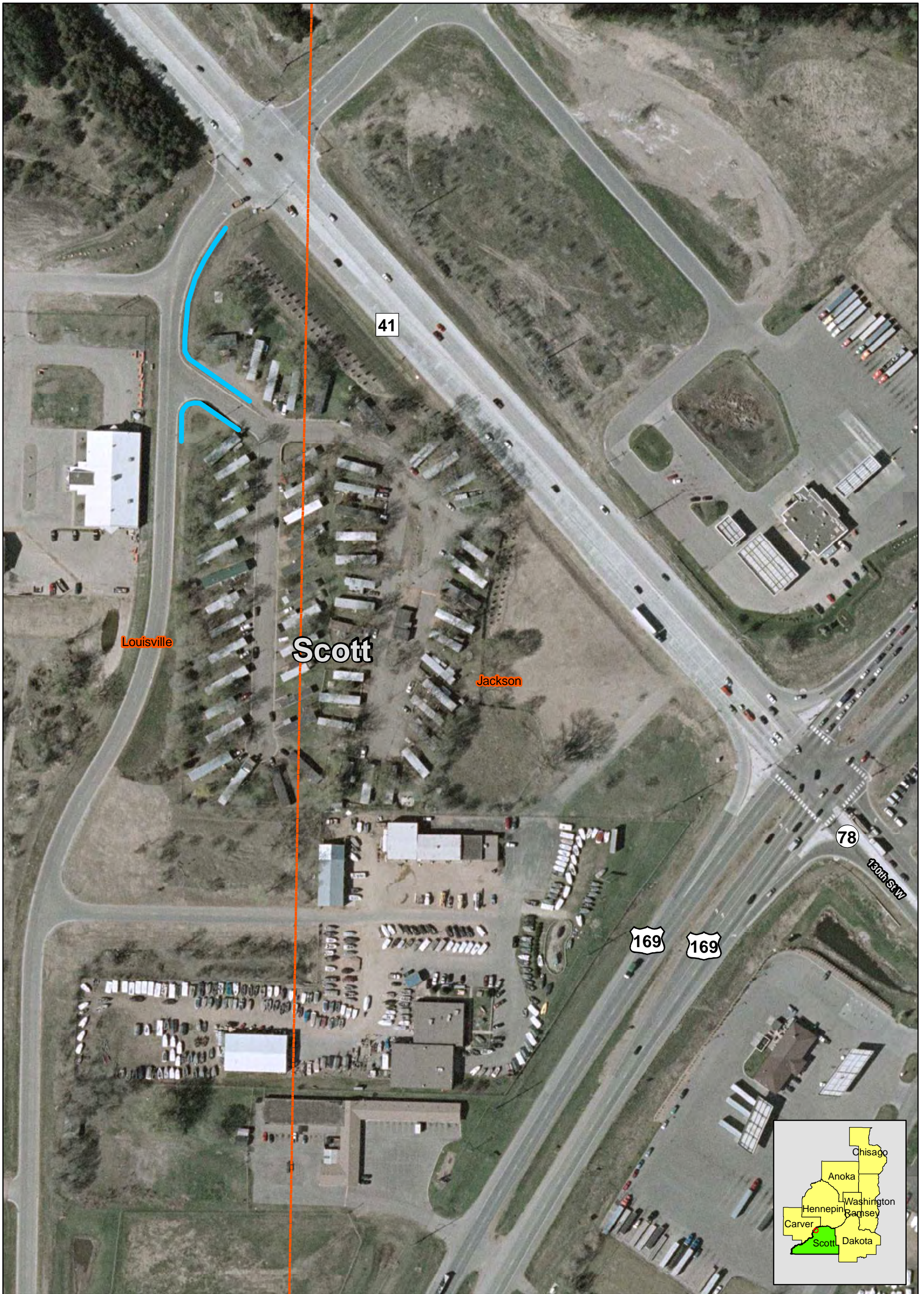


**Legend**

- MSE Type Walls
- Special Design Embankments

**Modular Block Walls**  
 West of TH 41 and approx. 575' north of Woodland Dr.,  
 and east of the TH 41/Woodland Dr. intersection  
 in Chaska  
 SP 1008-51



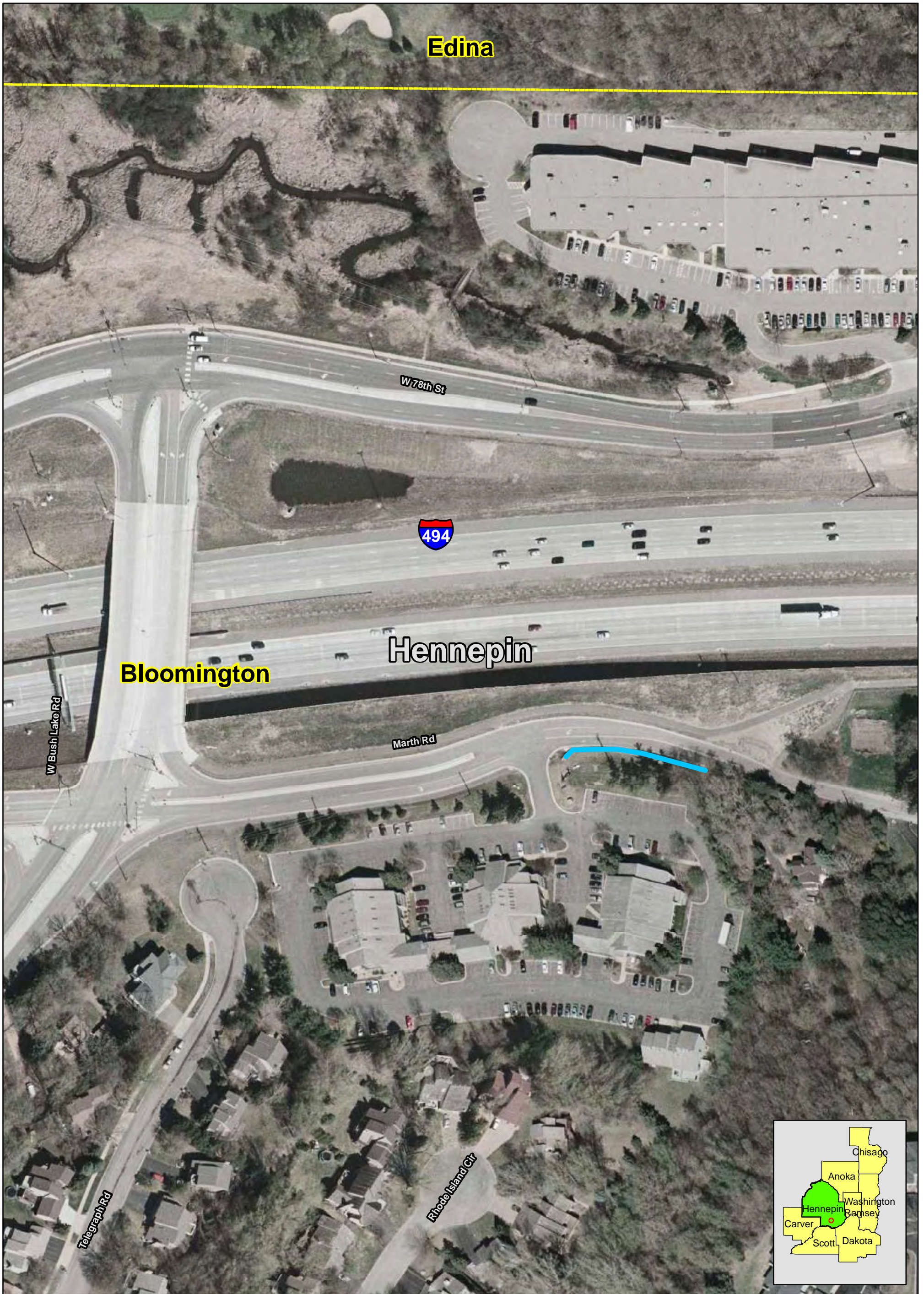


**Legend**

- MSE Type Walls
- Special Design Embankments

**Modular Block Walls  
Business and trailer park roads  
NW of of TH 41/169 intersection  
in Louisville Township  
SP 7010-20**





Edina

W 78th St



Hennepin

Bloomington

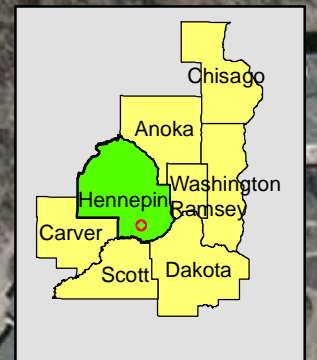
Marth Rd



W Bush Lake Rd

Telegraph Rd

Rhode Island Cir

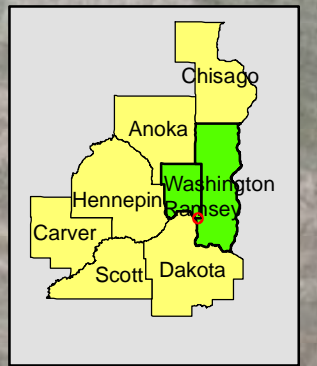
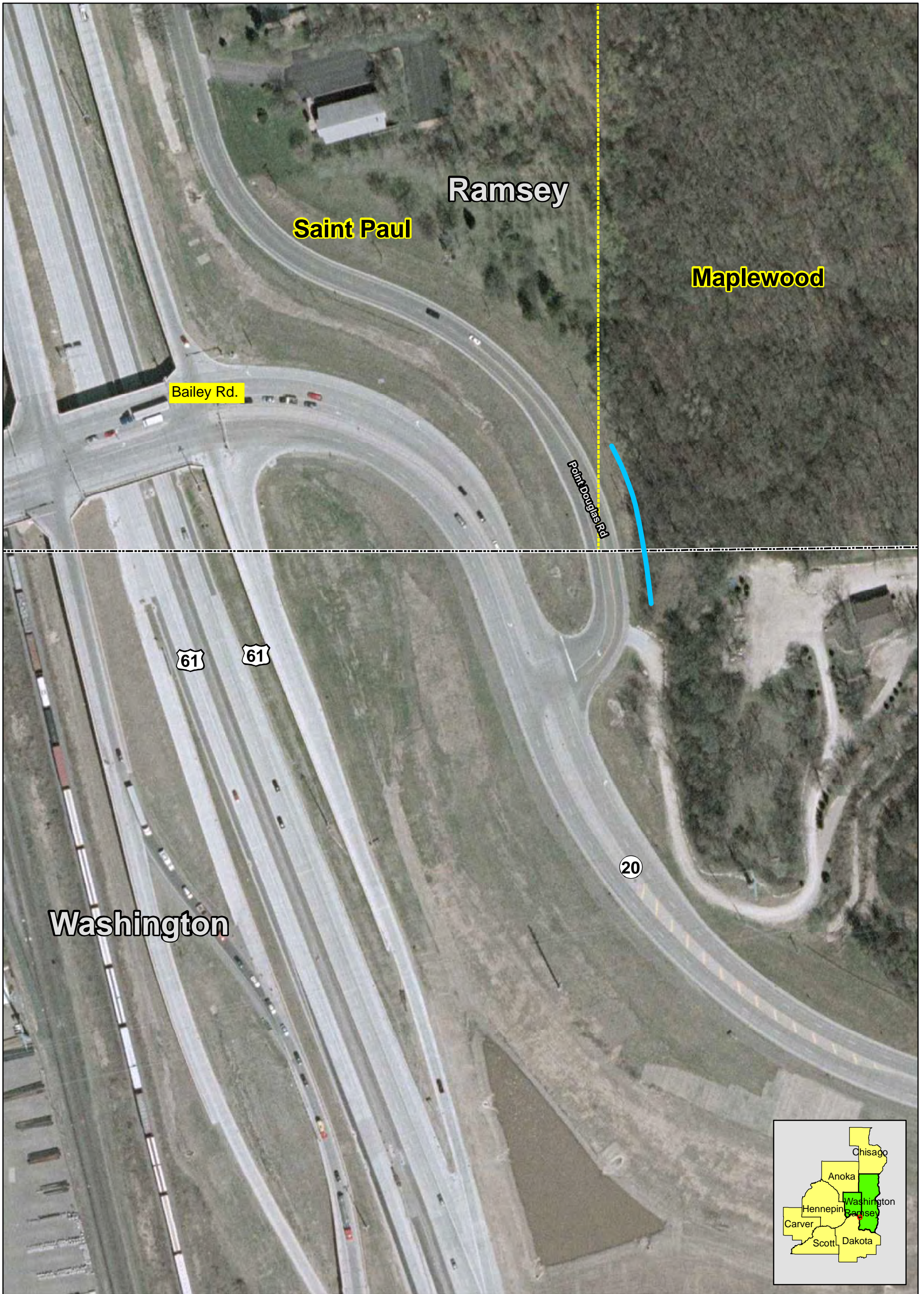


Legend

-  MSE Type Walls
-  Special Design Embankments

**Modular Block Wall**  
 Just south of TH 494 along the south side of Marth Rd.,  
 approx. 500' east of E Bush Lake Rd. in Bloomington  
 SP 2785-327





**Legend**

- MSE Type Walls
- Special Design Embankments

**Modular Block Wall**  
 Approx. 100' from the intersection of Bailey Rd.  
 & Pt. Douglas Rd. (east of NB TH 61) in  
 Newport and Maplewood  
 SP 8285-79



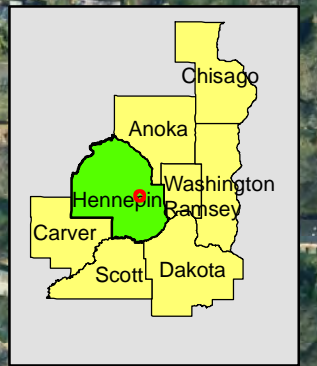
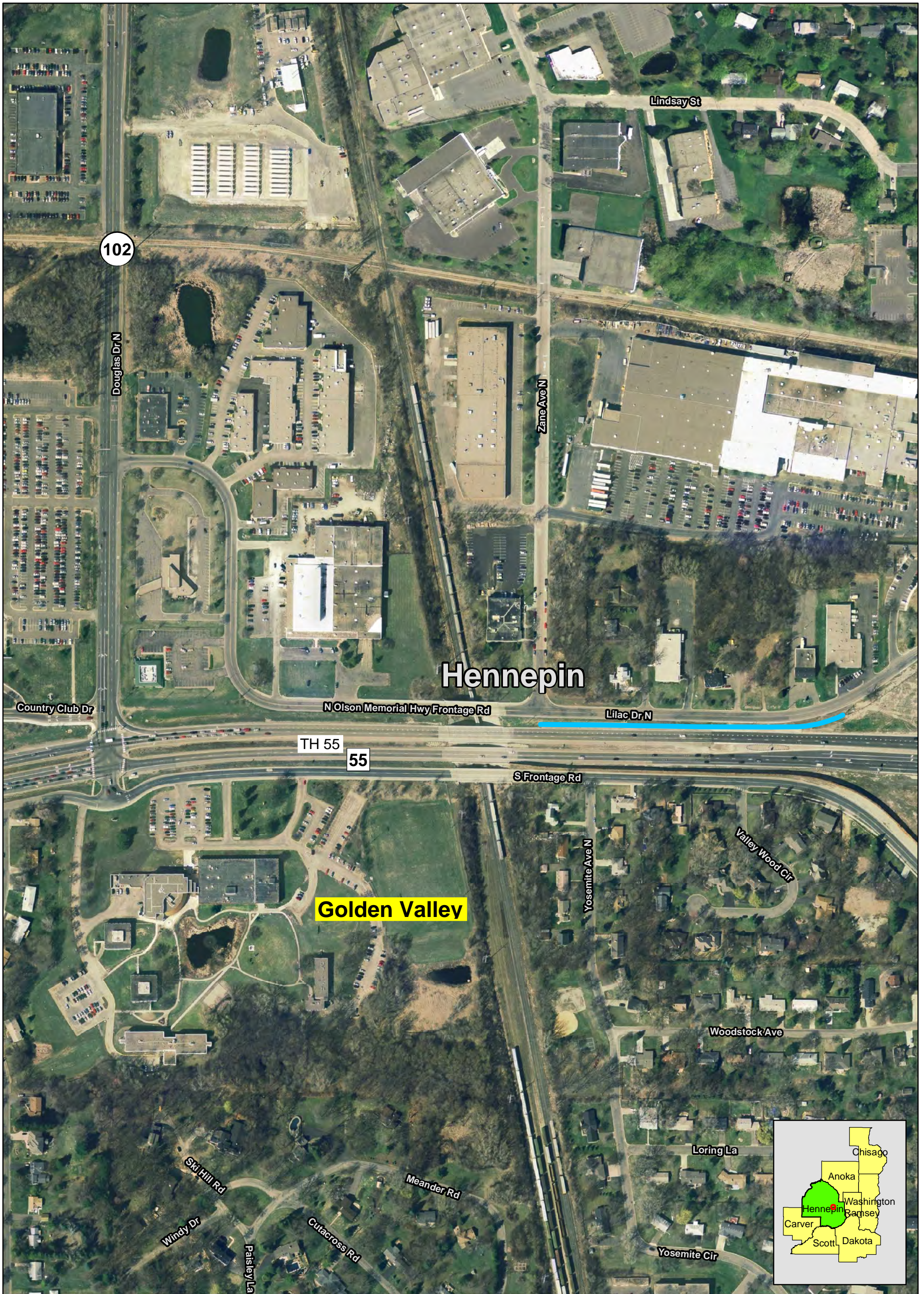


**Legend**

- MSE Type Walls
- Special Design Embankments

**Modular Block Wall**  
**Just north of TH 5 along the north side of 78th St.**  
**and just east of Prairie Flower Blvd. in Chanhassen**  
**SP 1002-61**





**Legend**

- MSE Type Walls
- Special Design Embankments

**Modular Block Wall  
Between Lilac Dr. and WB TH 55 by the NW corner  
of TH 55/TH 100 interchange in Golden Valley  
SP 2723-115**





**Golden Valley**

**Hennepin**

**Minneapolis**

**Wirth Lake**

**55**

Washburn Ave N

Vincent Ave N

8th Ave N



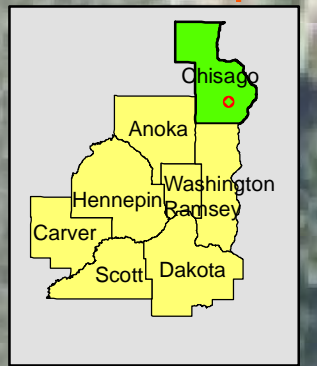
**Legend**

- MSE Type Walls
- Special Design Embankments

**MSE Walls**  
**Along EB TH 55 between Wirth Lake & RR tracks,**  
**and along EB TH 55 at the NE corner of Wirth Lake**  
**in Golden Valley**  
**SP 2752-32**







**Legend**

- MSE Type Walls
- Special Design Embankments

**MSE Wall  
 Along EB TH 8 between Park Island Dr.  
 and Summit Ave. in Center City  
 SP 1301-91**

