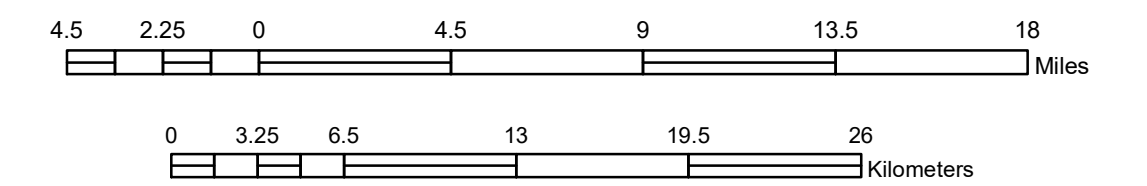


# TRIBAL GOVERNMENT MAP RED LAKE MINNESOTA

PREPARED BY THE  
MINNESOTA DEPARTMENT OF TRANSPORTATION  
OFFICE OF TRANSPORTATION SYSTEM MANAGEMENT

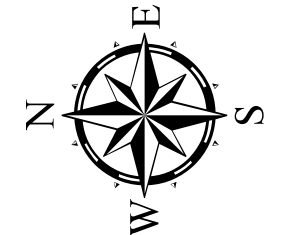
IN COOPERATION WITH  
U.S. DEPARTMENT OF TRANSPORTATION  
FEDERAL HIGHWAY ADMINISTRATION

SCALE

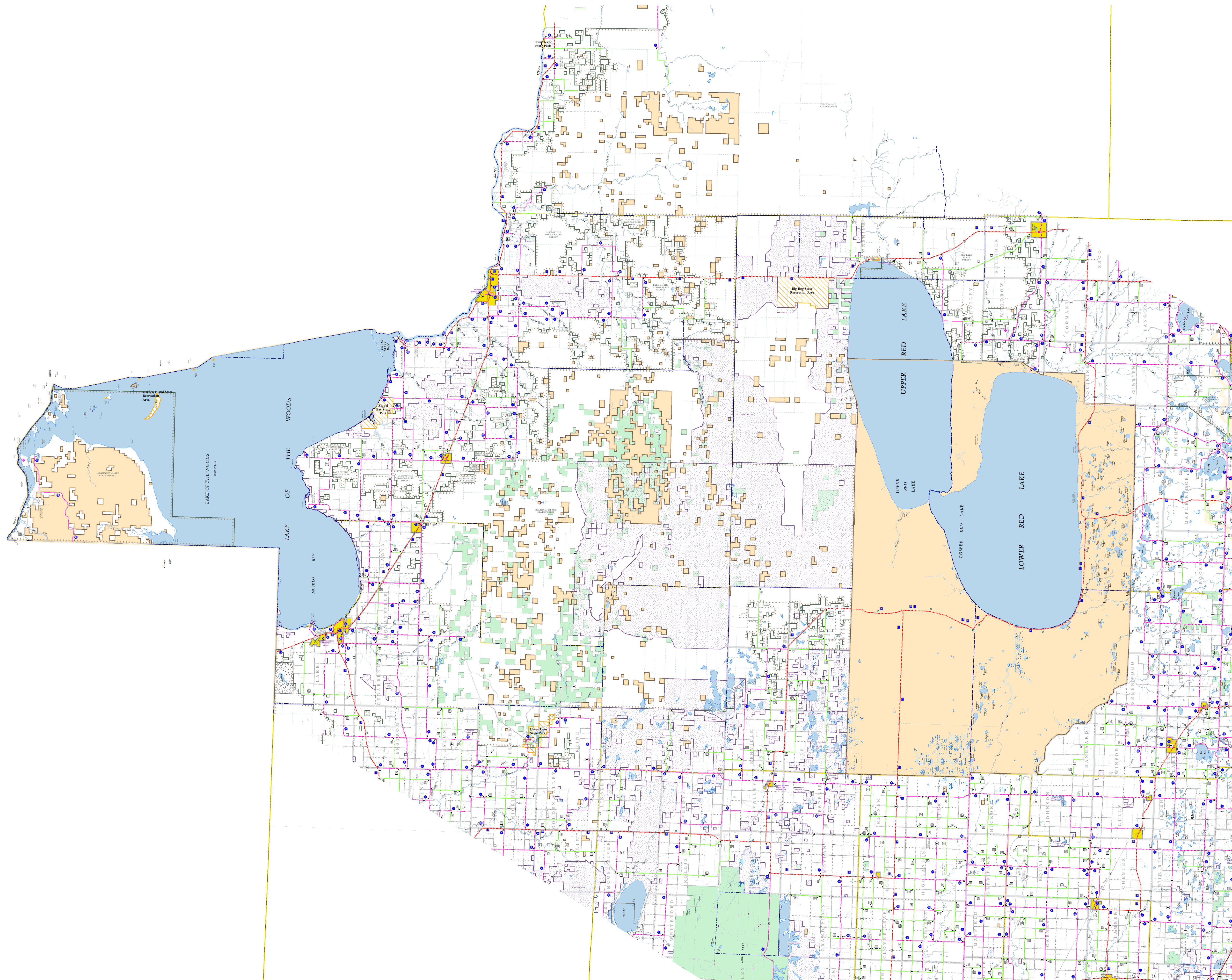


1 in = 23,750 ft  
2024

Projection:  
Transverse Mercator  
NAD 1986  
UTM Zone 15

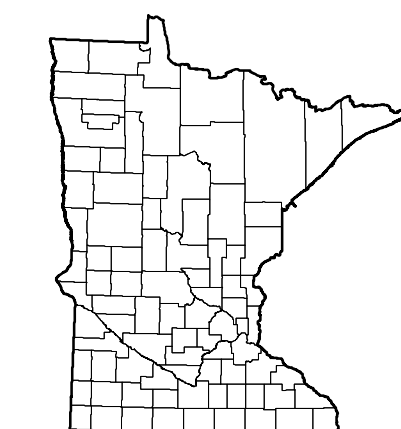


North American Datum  
of 1986



ROAD AND ROADWAY FEATURES		BOUNDARY FEATURES	
INTERSTATE	CONCRETE	TRIBAL LAND	STATE OF MINNESOTA
US HIGHWAY	BITUMINOUS	COUNTY	MUNICIPALITY
MN HIGHWAY	GRAVEL	MUNICIPALITY	MUNICIPALITY
COUNTY STATE AID HIGHWAY	DIRT/UNIMPROVED	UNORGANIZED TERRITORY	FEDERAL ADJUSTED URBAN AREA (2014)
COUNTY ROAD	OTHER	CIVIL TOWNSHIP	CONGRESSIONAL TOWNSHIP
TOWNSHIP ROAD	UNKNOWN	SECTION	MILITARY
UNORGANIZED TERRITORY ROAD	RAMP OR CONNECTOR	VOYAGEURS NATIONAL PARK	BOUNDARY WATERS CANOE AREA WILDERNESS
OTHER ROADS	INTERSTATE EXIT	STATE PARK	REGIONAL PARK
Municipal	GREAT RIVER ROAD	NATIONAL FOREST	NATIONAL AND STATE FOREST
Private	AVIATION FEATURES	NATIONAL FOREST	STATE FOREST
National Monument	COMMERCIAL AIRPORT	NATIONAL AND STATE FOREST	NATIONAL TRAIL
State Forest	GENERAL AIRPORT	STATE FOREST	WILDLIFE REFUGUE AREA
National Wildlife Refuge	AIRSTRIP	STATE FOREST	WILDLIFE MANAGEMENT AREA
State Game Preserve	SEAPLANE	STATE FOREST	HYDROLOGIC FEATURES
National Forest	AIRPORT RUNWAY	STATE FOREST	RIVER OR STREAM (PERENNIAL)
State Park	RAILROAD AND RAILWAY FEATURES	STATE FOREST	LAKE, POND OR RESERVOIR
Passage	RAILWAY	STATE FOREST	STREAM (INTERMITTENT)
Empire Builder Station (Approx.)	EMPIRE BUILDER STATION (APPROX.)	STATE FOREST	DRAINAGE DITCH
Northstar Station (Commuter)	NORTHSTAR STATION (COMMUTER)	STATE FOREST	WETLAND
Light Rail	LIGHT RAIL	STATE FOREST	ISLAND OR LAND
Blue Line	BLUE LINE	STATE FOREST	REGIONAL WATERSHED
Green Line	GREEN LINE	STATE FOREST	
Long Bridge (200' or Greater Span)	LONG BRIDGE (200' or Greater Span)	STATE FOREST	
Major Bridge (20' to 200' Span)	MAJOR BRIDGE (20' to 200' Span)	STATE FOREST	
Minor Bridge (5' to 20' Span)	MINOR BRIDGE (5' to 20' Span)	STATE FOREST	
DAM	DAM	STATE FOREST	
LOCK AND DAM	LOCK AND DAM	STATE FOREST	
STATE CAPITAL	STATE CAPITAL	STATE FOREST	
COUNTY SEAT	COUNTY SEAT	STATE FOREST	
CITY CENTER	CITY CENTER	STATE FOREST	
UNINCORPORATED COMMUNITY	UNINCORPORATED COMMUNITY	STATE FOREST	
MNDOT OFFICE	MNDOT OFFICE	STATE FOREST	
MNDOT TRUCK STATION	MNDOT TRUCK STATION	STATE FOREST	
HIGHWAY PATROL DISTRICT OFFICE	HIGHWAY PATROL DISTRICT OFFICE	STATE FOREST	
STATE TRAVEL INFORMATION CENTER	STATE TRAVEL INFORMATION CENTER	STATE FOREST	
REST AREA (Full Service)	REST AREA (FULL SERVICE)	STATE FOREST	
REST AREA (Vault Toilet)	REST AREA (VAULT TOILET)	STATE FOREST	
WAYSIDE (Vault or PA Toilet)	WAYSIDE (VAULT OR PA TOILET)	STATE FOREST	
PARK AND RIDE LOT	PARK AND RIDE LOT	STATE FOREST	
PORT OF ENTRY	PORT OF ENTRY	STATE FOREST	
PUBLIC ACCESS POINT	PUBLIC ACCESS POINT	STATE FOREST	
MN STATE COLLEGE AND UNIVERSITY SYSTEM (MNSCU)	MN STATE COLLEGE AND UNIVERSITY SYSTEM (MNSCU)	STATE FOREST	
UNIVERSITY OF MN SYSTEM	UNIVERSITY OF MN SYSTEM	STATE FOREST	
FAIRGROUNDS	FAIRGROUNDS	STATE FOREST	
CULTURAL FEATURES	CULTURAL FEATURES	STATE FOREST	
STATE HISTORICAL MARKER	STATE HISTORICAL MARKER	STATE FOREST	
HISTORIC DISTRICT	HISTORIC DISTRICT	STATE FOREST	
HISTORIC SITE	HISTORIC SITE	STATE FOREST	
MONUMENT	MONUMENT	STATE FOREST	

Outline Map of Minnesota showing location of the County within the state.



Outline Map of the County.

Area of this County  
Land Area  
2010 Total County Population

Sq. Miles  
Sq. Miles