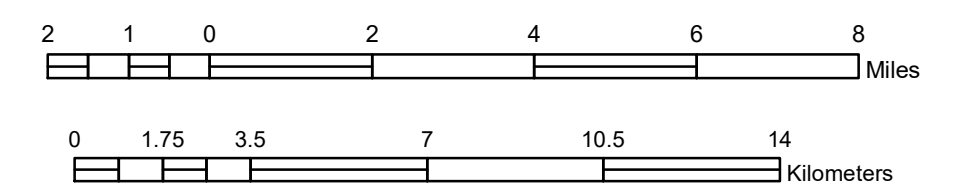


# TRIBAL GOVERNMENT MAP LEECH LAKE MINNESOTA

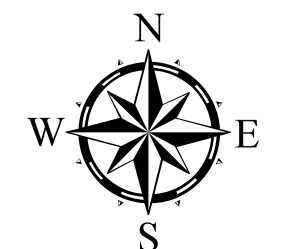
PREPARED BY THE  
MINNESOTA DEPARTMENT OF TRANSPORTATION  
OFFICE OF TRANSPORTATION SYSTEM MANAGEMENT

IN COOPERATION WITH  
U.S. DEPARTMENT OF TRANSPORTATION  
FEDERAL HIGHWAY ADMINISTRATION

SCALE

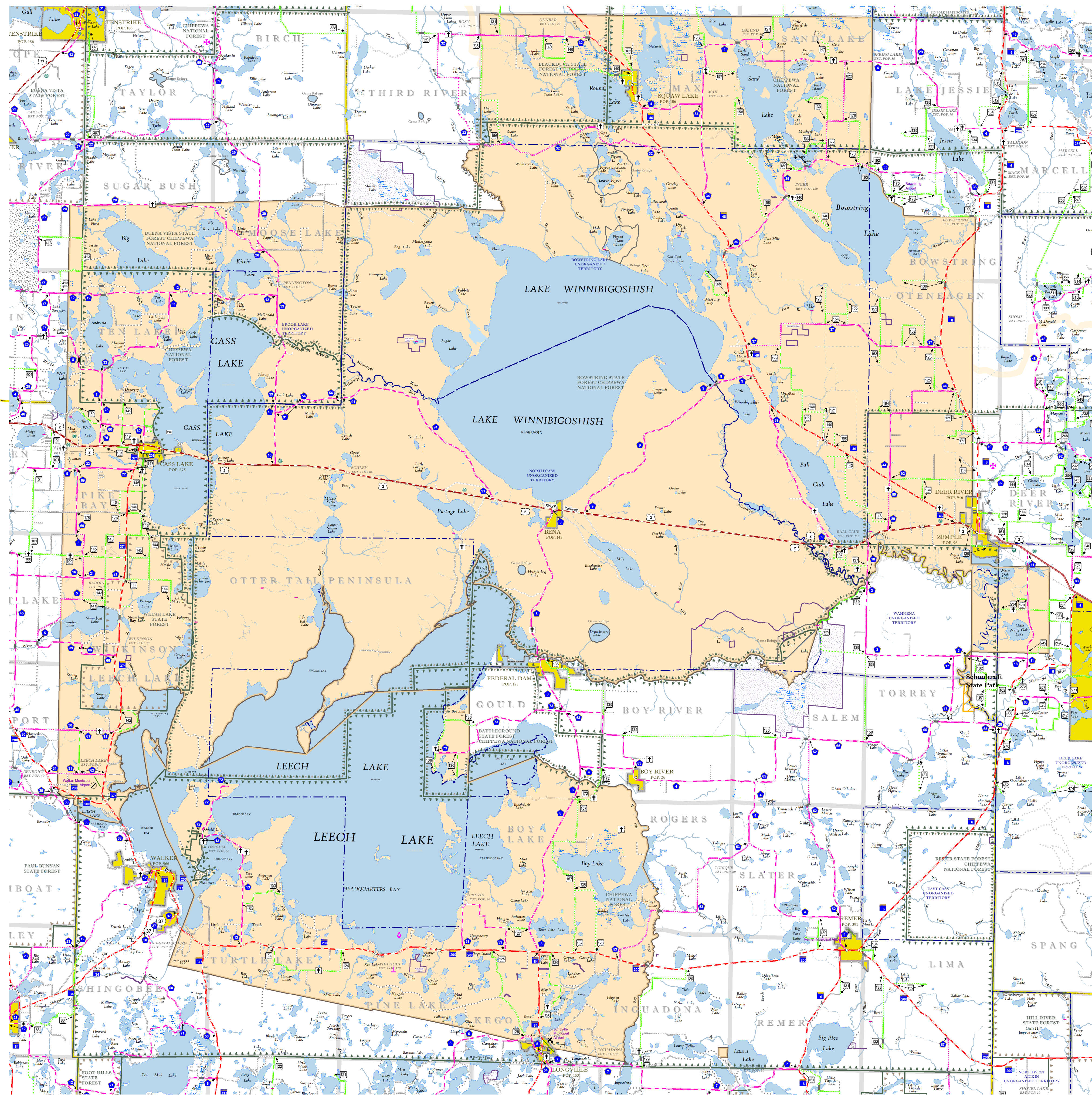


1 in = 12,500 ft  
2024



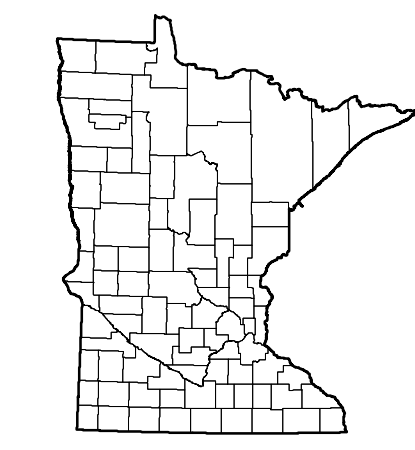
North American Datum  
of 1986

Projection:  
Transverse Mercator  
NAD 1986  
UTM Zone 15



ROAD AND ROADWAY FEATURES	
INTERSTATE	CONCRETE
US HIGHWAY	BITUMINOUS
MN HIGHWAY	GRAVEL
COUNTY STATE AID HIGHWAY	DIRT/UNIMPROVED
COUNTY ROAD	OTHER
TOWNSHIP ROAD	UNKNOWN
UNORGANIZED TERRITORY ROAD	
OTHER ROADS	RAMP OR CONNECTOR
Municipal	INTERSTATE EXIT
Private	GREAT RIVER ROAD
National Monument	
State Forest	
Native Service	
National Park	
National Wildlife	
State Game	
National Forest	
State Park	
Passage	
RAILROAD AND RAILWAY FEATURES	
RAILWAY	COMMERCIAL AIRPORT
EMPIRE BUILDER STATION (APPROX.)	GENERAL AIRPORT
NORTHSTAR STATION (COMMITTEE)	AIRSTRIP
	SEAPLANE
	AIRPORT RUNWAY
INFRASTRUCTURE FEATURES	
LONG BRIDGE (200' or Greater Spans)	TRIBAL LAND
MAJOR BRIDGE (20' to 200' Spans)	STATE OF MINNESOTA
MINOR BRIDGE (5' to 20' Spans)	COUNTY
DAM	MUNICIPALITY
LOCK AND DAM	UNORGANIZED TERRITORY
	FEDERAL ADJUSTED URBAN AREA (2014)
	CIVIL TOWNSHIP
	CONGRESSIONAL TOWNSHIP
	SECTION
PUBLIC SERVICE FEATURES	
MNDOT OFFICE	MILITARY
MNDOT TRUCK STATION	VOYAGEURS NATIONAL PARK
HIGHWAY PATROL DISTRICT OFFICE	BOUNDARY WATERS CANOE AREA WILDERNESS
STATE TRAVEL INFORMATION CENTER	STATE PARK
REST AREA (Full Service)	REGIONAL PARK
WAYSIDE (Walk or Park Toilet)	NATIONAL FOREST
PARK AND RIDE LOT	NATIONAL AND STATE FOREST
PORT OF ENTRY	STATE FOREST
PUBLIC ACCESS POINT	NATIONAL TRAIL
MN STATE COLLEGE AND UNIVERSITY SYSTEM (MNSCU)	WILDLIFE REFUGE AREA
UNIVERSITY OF MN SYSTEM	WILDLIFE MANAGEMENT AREA
FAIRGROUNDS	
CULTURAL FEATURES	
STATE HISTORICAL MARKER	HYDROLOGIC FEATURES
HISTORIC DISTRICT	RIVER OR STREAM (Perennial)
HISTORIC SITE	LAKE, POND OR RESERVOIR
MONUMENT	STREAM (Intermittent)
	DRAINAGE DITCH
	WETLAND
	ISLAND OR LAND
	REGIONAL WATERSHED

Outline Map of Minnesota showing location of the County within the state.



Outline Map of the County.

Area of this County  
Land Area  
2010 Total County Population  
Sq. Miles  
Sq. Miles

To request information from this document in an alternative format, call 651-366-4718 or 1-800-657-3774 (Greater Minnesota); 711 or 1-800-627-3529 (Minnesota Relay). You may also send an e-mail to [ADRequest.dot@state.mn.us](mailto:ADRequest.dot@state.mn.us). (Please request at least one week in advance.)

NOTE: FOR DETAIL OF COUNTY STATE AID HIGHWAYS AND COUNTY ROADS IN INCORPORATED PLACES, SEE MAPS OF MUNICIPALITIES.