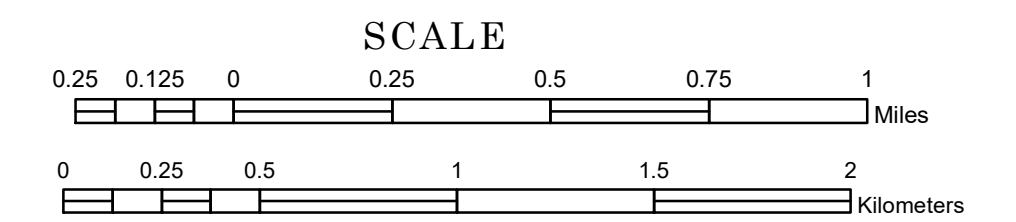


TOWNSHIP OF FRIENDSHIP

PREPARED BY THE
MINNESOTA DEPARTMENT OF TRANSPORTATION
OFFICE OF TRANSPORTATION SYSTEM MANAGEMENT

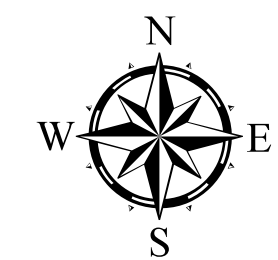
IN COOPERATION WITH
U.S. DEPARTMENT OF TRANSPORTATION
FEDERAL HIGHWAY ADMINISTRATION



1 in = 1,600 ft

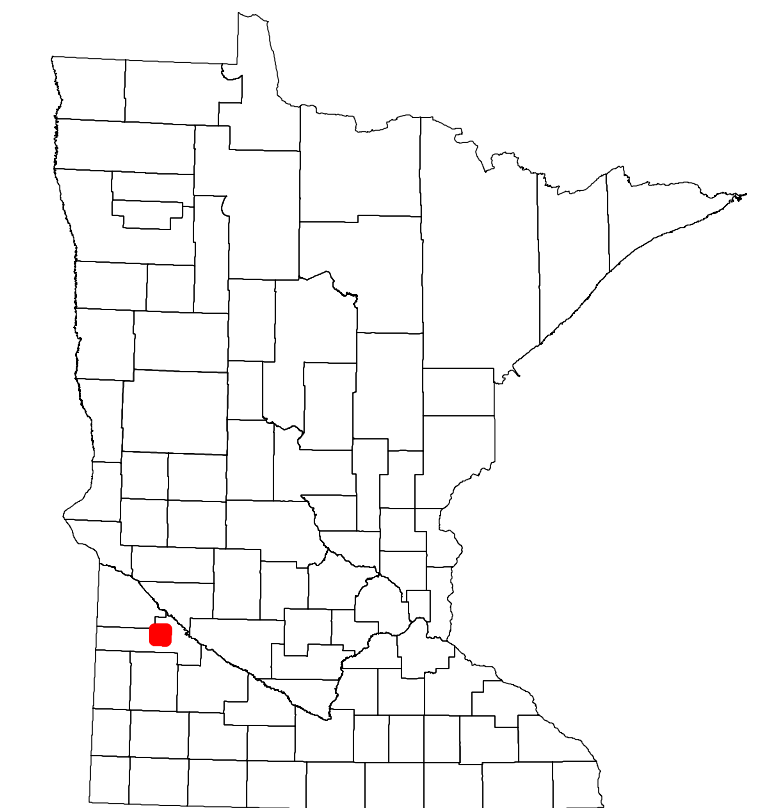
2024

Projection:
Transverse Mercator
NAD 1986
UTM Zone 15

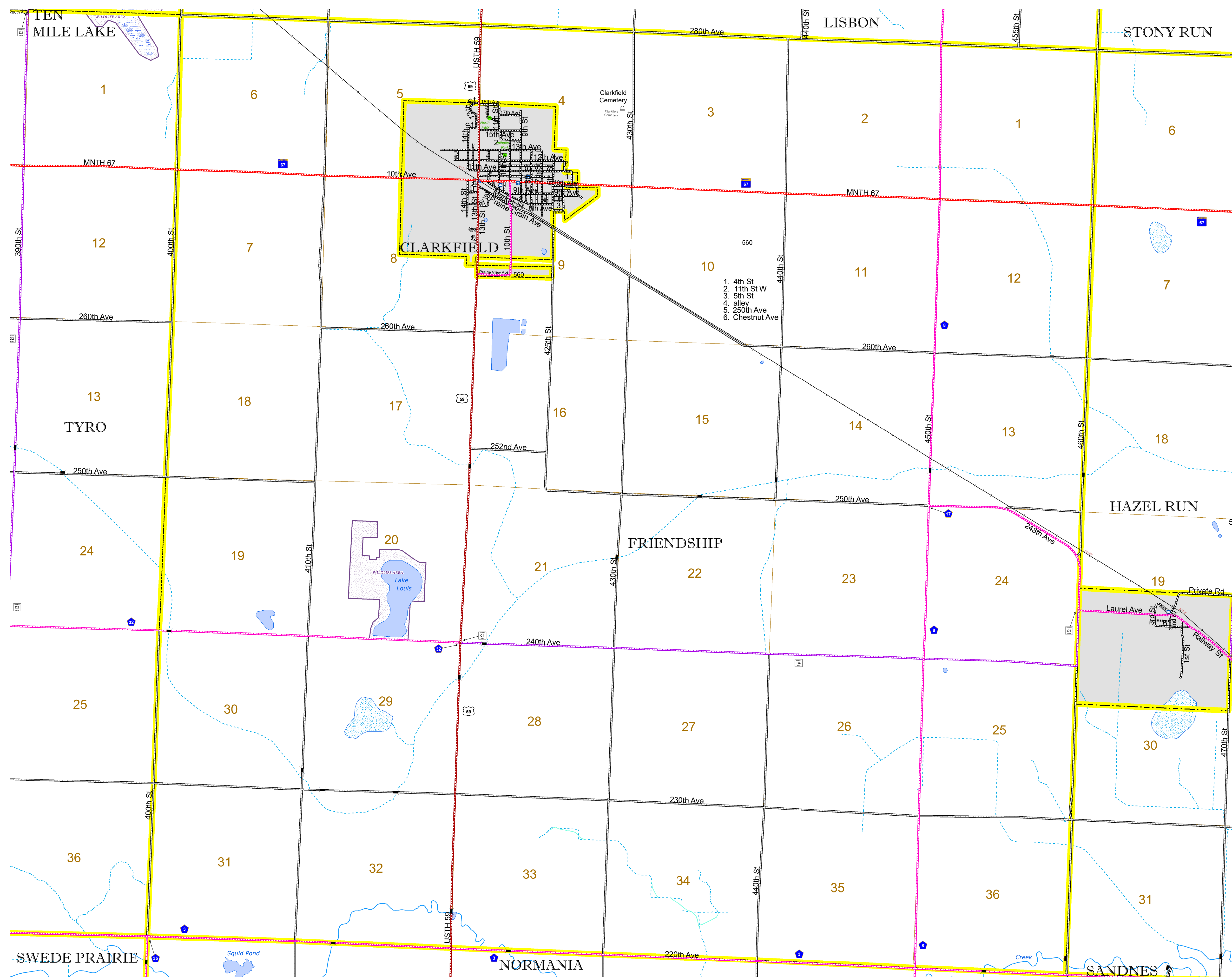


North American Datum
of 1986

ROAD AND ROADWAY FEATURES		BOUNDARY FEATURES	
INTERSTATE	CONCRETE	TRIBAL LAND	STATE OF MINNESOTA
US HIGHWAY	BITUMINOUS	COUNTY	MUNICIPALITY
MN HIGHWAY	GRAVEL	UNINCORPORATED TOWNSHIP	CIVIL TOWNSHIP
COUNTY STATE AID HIGHWAY	DIRT/UNIMPROVED	SECTION	MILITARY
COUNTY ROAD	OTHER	VOYAGEURS NATIONAL PARK	BOUNDARY WATERS CANOE AREA WILDERNESS
TOWNSHIP ROAD	UNKNOWN	STATE PARK	REGIONAL PARK
UNORGANIZED TERRITORY ROAD		NATIONAL FOREST	NATIONAL AND STATE FOREST
OTHER ROADS		STATE FOREST	NATIONAL TRAIL
Municipal	RAMP OR CONNECTOR	WILDLIFE REFUGUE AREA	WILDLIFE MANAGEMENT AREA
Private	INTERSTATE EXIT	WILDLIFE MANAGEMENT AREA	HYDROLOGIC FEATURES
National Monument	AVIATION FEATURES	RIVER OR STREAM (PERMANENT)	LAKE, POND OR RESERVOIR
National Wildlife Refuge	COMMERCIAL AIRPORT	STREAM (INTERMITTENT)	DRAINAGE DITCH
State Park	GENERAL AIRPORT	WETLAND	ISLAND OR LAND
Preserve	AIRSTRIP	REGIONAL WATERSHED	
	SEAPLANE		
	AIRPORT RUNWAY		
RAILROAD AND RAILWAY FEATURES		CITY CENTERS	
EMPIRE BUILDER STATION (AMTRAK)	COMMERCIAL AIRPORT	STATE CAPITAL	CITY CENTER
NORTHSTAR STATION (COMPUTER)	GENERAL AIRPORT	COUNTY SEAT	CITY CENTER
	AIRSTRIP		UNINCORPORATED COMMUNITY
	SEAPLANE		
	AIRPORT RUNWAY		
INFRASTRUCTURE FEATURES		PUBLIC SERVICE FEATURES	
LONG BRIDGE (200' OR GREATER SPAN)	TRIBAL LAND	MNDOT OFFICE	STATE HISTORICAL MARKER
MAJOR BRIDGE (20' TO 200' SPAN)	STATE OF MINNESOTA	MNDOT TRUCK STATION	HISTORIC DISTRICT
MINOR BRIDGE (5' TO 20' SPAN)	COUNTY	HIGHWAY PATROL DISTRICT OFFICE	HISTORIC SITE
DAM	MUNICIPALITY	STATE TRAVEL INFORMATION CENTER	MONUMENT
LOCK-AND-DAM	UNINCORPORATED TOWNSHIP	REST AREA (FULL SERVICE)	
	CIVIL TOWNSHIP	REST AREA (VAULT TOILET)	
	FEDERAL ADJUSTED URBAN AREA (2014)	WAYSIDE (VAULT OR PIT TOILET)	
		PARK AND RIDE LOT	
		PORT OF ENTRY	
		PUBLIC ACCESS POINT	
		MN STATE COLLEGE AND UNIVERSITY SYSTEM (MNSCU)	
		UNIVERSITY OF MN SYSTEM	
		FAIRGROUNDS	



Population (U.S. Census 2010): 192



1. 4th St
2. 11th St W
3. 5th St
4. alley
5. 250th Ave
6. Chestnut Ave

To request information from this document in an alternative format, call 651-366-4718 or 1-800-657-3774 (Greater Minnesota); 711 or 1-800-627-3529 (Minnesota Relay). You may also send an e-mail to ADArequest.dot@state.mn.us. (Please request at least one week in advance.)