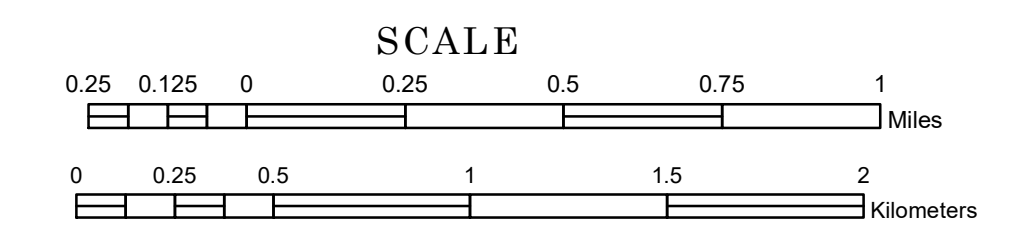


TOWNSHIP OF WOLVERTON

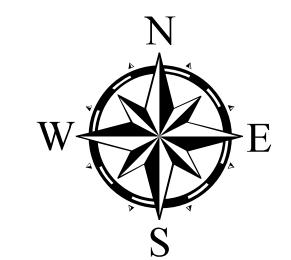
PREPARED BY THE
MINNESOTA DEPARTMENT OF TRANSPORTATION
OFFICE OF TRANSPORTATION SYSTEM MANAGEMENT

IN COOPERATION WITH
U.S. DEPARTMENT OF TRANSPORTATION
FEDERAL HIGHWAY ADMINISTRATION



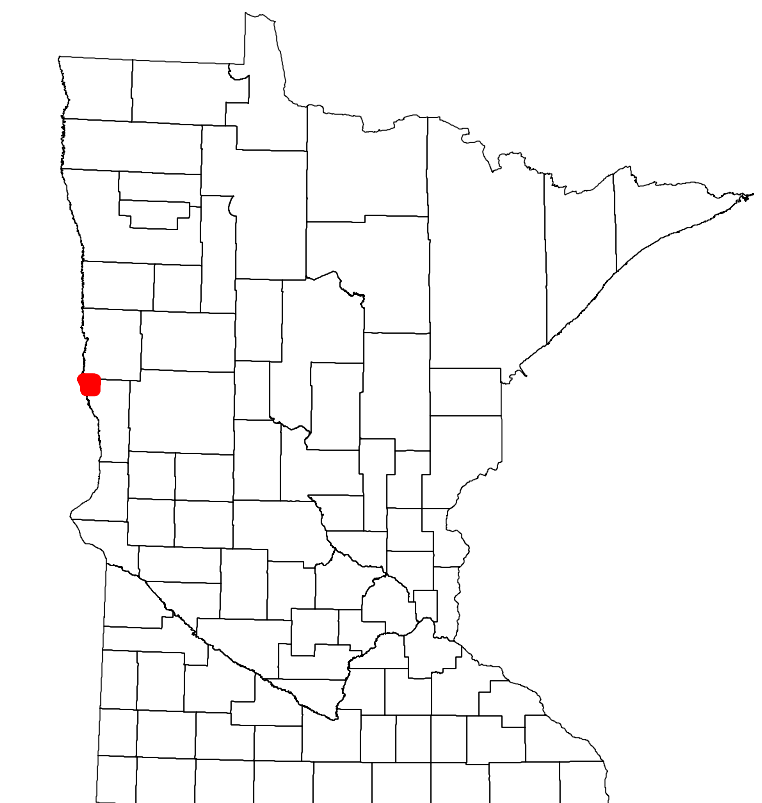
2023

Projection:
Transverse Mercator
NAD 1986
UTM Zone 15

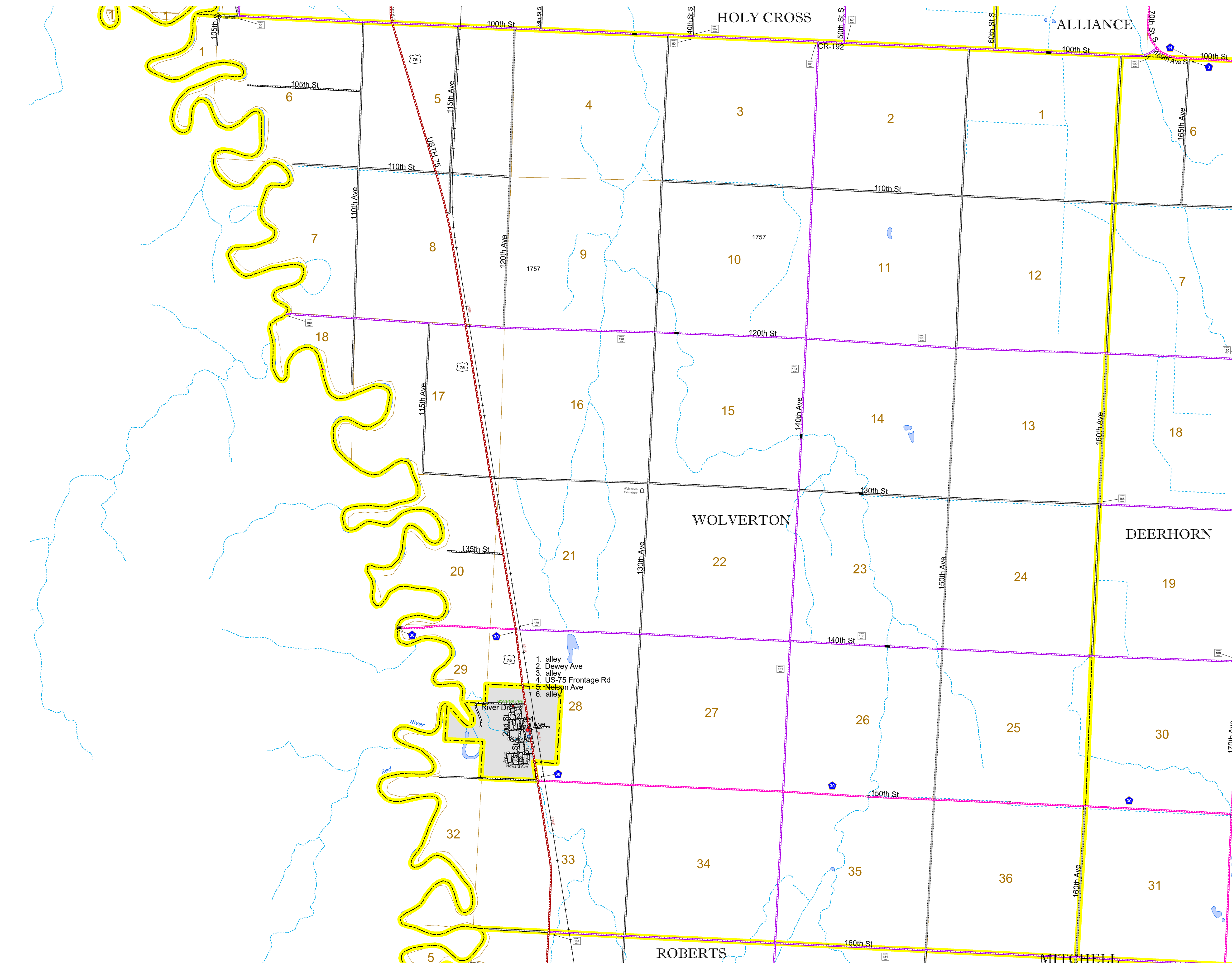


North American Datum
of 1986

ROAD AND ROADWAY FEATURES		AVIATION FEATURES	
INTERSTATE	CONCRETE	COMMERCIAL AIRPORT	GENERAL AIRPORT
US HIGHWAY	BITUMINOUS	NORTHSTAR STATION (COMMUTER)	AIRSTRIP
MN HIGHWAY	GRAVEL	SEAPLANE	AIRPORT RUNWAY
COUNTY STATE AID HIGHWAY	DIRT/UNIMPROVED	OTHER	UNKNOWN
COUNTY ROAD	OTHER	UNKNOWN	UNKNOWN
TOWNSHIP ROAD	UNKNOWN	UNKNOWN	UNKNOWN
UNORGANIZED TERRITORY ROAD	UNKNOWN	UNKNOWN	UNKNOWN
OTHER ROADS	RAMP OR CONNECTOR	UNKNOWN	UNKNOWN
Municipal	INTERSTATE EXIT	UNKNOWN	UNKNOWN
Private	GREAT RIVER ROAD	UNKNOWN	UNKNOWN
National Monument	UNKNOWN	UNKNOWN	UNKNOWN
National Park	UNKNOWN	UNKNOWN	UNKNOWN
National Wildlife Refuge	UNKNOWN	UNKNOWN	UNKNOWN
State Game	UNKNOWN	UNKNOWN	UNKNOWN
State Park	UNKNOWN	UNKNOWN	UNKNOWN
Preserve	UNKNOWN	UNKNOWN	UNKNOWN
RAILROAD AND RAILWAY FEATURES	RAILROAD AND RAILWAY FEATURES	RAILROAD AND RAILWAY FEATURES	RAILROAD AND RAILWAY FEATURES
EMPIRE BUILDER STATION (AMTRAK)	EMPIRE BUILDER STATION (AMTRAK)	EMPIRE BUILDER STATION (AMTRAK)	EMPIRE BUILDER STATION (AMTRAK)
NORTHSTAR STATION (COMMUTER)	NORTHSTAR STATION (COMMUTER)	NORTHSTAR STATION (COMMUTER)	NORTHSTAR STATION (COMMUTER)
LIGHT RAIL	LIGHT RAIL	LIGHT RAIL	LIGHT RAIL
BLUE LINE	BLUE LINE	BLUE LINE	BLUE LINE
GREEN LINE	GREEN LINE	GREEN LINE	GREEN LINE
INFRASTRUCTURE FEATURES	INFRASTRUCTURE FEATURES	INFRASTRUCTURE FEATURES	INFRASTRUCTURE FEATURES
LONG BRIDGE (200' or Greater Span)	LONG BRIDGE (200' or Greater Span)	LONG BRIDGE (200' or Greater Span)	LONG BRIDGE (200' or Greater Span)
MAJOR BRIDGE (20' to 200' Span)	MAJOR BRIDGE (20' to 200' Span)	MAJOR BRIDGE (20' to 200' Span)	MAJOR BRIDGE (20' to 200' Span)
MINOR BRIDGE (5' to 20' Span)	MINOR BRIDGE (5' to 20' Span)	MINOR BRIDGE (5' to 20' Span)	MINOR BRIDGE (5' to 20' Span)
DAM	DAM	DAM	DAM
LOCK AND DAM	LOCK AND DAM	LOCK AND DAM	LOCK AND DAM
CITY CENTERS	CITY CENTERS	CITY CENTERS	CITY CENTERS
STATE CAPITAL	STATE CAPITAL	STATE CAPITAL	STATE CAPITAL
COUNTY SEAT	COUNTY SEAT	COUNTY SEAT	COUNTY SEAT
CITY CENTER	CITY CENTER	CITY CENTER	CITY CENTER
UNINCORPORATED COMMUNITY	UNINCORPORATED COMMUNITY	UNINCORPORATED COMMUNITY	UNINCORPORATED COMMUNITY
PUBLIC SERVICE FEATURES	PUBLIC SERVICE FEATURES	PUBLIC SERVICE FEATURES	PUBLIC SERVICE FEATURES
MNDOT OFFICE	MNDOT OFFICE	MNDOT OFFICE	MNDOT OFFICE
MNDOT TRUCK STATION	MNDOT TRUCK STATION	MNDOT TRUCK STATION	MNDOT TRUCK STATION
HIGHWAY PATROL DISTRICT OFFICE	HIGHWAY PATROL DISTRICT OFFICE	HIGHWAY PATROL DISTRICT OFFICE	HIGHWAY PATROL DISTRICT OFFICE
STATE TRAVEL INFORMATION CENTER	STATE TRAVEL INFORMATION CENTER	STATE TRAVEL INFORMATION CENTER	STATE TRAVEL INFORMATION CENTER
REST AREA (Full Service)	REST AREA (Full Service)	REST AREA (Full Service)	REST AREA (Full Service)
REST AREA (Vault Toilet)	REST AREA (Vault Toilet)	REST AREA (Vault Toilet)	REST AREA (Vault Toilet)
WAYSIDE (Vault or Pit Toilet)	WAYSIDE (Vault or Pit Toilet)	WAYSIDE (Vault or Pit Toilet)	WAYSIDE (Vault or Pit Toilet)
PARK AND RIDE LOT	PARK AND RIDE LOT	PARK AND RIDE LOT	PARK AND RIDE LOT
PORT OF ENTRY	PORT OF ENTRY	PORT OF ENTRY	PORT OF ENTRY
PUBLIC ACCESS POINT	PUBLIC ACCESS POINT	PUBLIC ACCESS POINT	PUBLIC ACCESS POINT
MN STATE COLLEGE AND UNIVERSITY SYSTEM (MNSCU)	MN STATE COLLEGE AND UNIVERSITY SYSTEM (MNSCU)	MN STATE COLLEGE AND UNIVERSITY SYSTEM (MNSCU)	MN STATE COLLEGE AND UNIVERSITY SYSTEM (MNSCU)
UNIVERSITY OF MN SYSTEM	UNIVERSITY OF MN SYSTEM	UNIVERSITY OF MN SYSTEM	UNIVERSITY OF MN SYSTEM
FAIRGROUNDS	FAIRGROUNDS	FAIRGROUNDS	FAIRGROUNDS
CULTURAL FEATURES	CULTURAL FEATURES	CULTURAL FEATURES	CULTURAL FEATURES
STATE HISTORICAL MARKER	STATE HISTORICAL MARKER	STATE HISTORICAL MARKER	STATE HISTORICAL MARKER
HISTORIC DISTRICT	HISTORIC DISTRICT	HISTORIC DISTRICT	HISTORIC DISTRICT
HISTORIC SITE	HISTORIC SITE	HISTORIC SITE	HISTORIC SITE
MONUMENT	MONUMENT	MONUMENT	MONUMENT
BOUNDARY FEATURES	BOUNDARY FEATURES	BOUNDARY FEATURES	BOUNDARY FEATURES
TRIBAL LAND	TRIBAL LAND	TRIBAL LAND	TRIBAL LAND
STATE OF MINNESOTA	STATE OF MINNESOTA	STATE OF MINNESOTA	STATE OF MINNESOTA
COUNTY	COUNTY	COUNTY	COUNTY
MUNICIPALITY	MUNICIPALITY	MUNICIPALITY	MUNICIPALITY
UNORGANIZED TERRITORY	UNORGANIZED TERRITORY	UNORGANIZED TERRITORY	UNORGANIZED TERRITORY
FEDERAL ADJUSTED URBAN AREA (2014)	FEDERAL ADJUSTED URBAN AREA (2014)	FEDERAL ADJUSTED URBAN AREA (2014)	FEDERAL ADJUSTED URBAN AREA (2014)
CIVIL TOWNSHIP	CIVIL TOWNSHIP	CIVIL TOWNSHIP	CIVIL TOWNSHIP
CONGRESSIONAL DISTRICT	CONGRESSIONAL DISTRICT	CONGRESSIONAL DISTRICT	CONGRESSIONAL DISTRICT
SECTION	SECTION	SECTION	SECTION
MILITARY	MILITARY	MILITARY	MILITARY
VOYAGEURS NATIONAL PARK	VOYAGEURS NATIONAL PARK	VOYAGEURS NATIONAL PARK	VOYAGEURS NATIONAL PARK
BOUNDARY WATERS CANOE AREA WILDERNESS	BOUNDARY WATERS CANOE AREA WILDERNESS	BOUNDARY WATERS CANOE AREA WILDERNESS	BOUNDARY WATERS CANOE AREA WILDERNESS
STATE PARK	STATE PARK	STATE PARK	STATE PARK
REGIONAL PARK	REGIONAL PARK	REGIONAL PARK	REGIONAL PARK
NATIONAL FOREST	NATIONAL FOREST	NATIONAL FOREST	NATIONAL FOREST
NATIONAL AND STATE FOREST	NATIONAL AND STATE FOREST	NATIONAL AND STATE FOREST	NATIONAL AND STATE FOREST
STATE FOREST	STATE FOREST	STATE FOREST	STATE FOREST
NATIONAL TRAIL	NATIONAL TRAIL	NATIONAL TRAIL	NATIONAL TRAIL
WILDLIFE REFUGUE AREA	WILDLIFE REFUGUE AREA	WILDLIFE REFUGUE AREA	WILDLIFE REFUGUE AREA
WILDLIFE MANAGEMENT AREA	WILDLIFE MANAGEMENT AREA	WILDLIFE MANAGEMENT AREA	WILDLIFE MANAGEMENT AREA
HYDROLOGIC FEATURES	HYDROLOGIC FEATURES	HYDROLOGIC FEATURES	HYDROLOGIC FEATURES
RIVER OR STREAM (PERENNIAL)	RIVER OR STREAM (PERENNIAL)	RIVER OR STREAM (PERENNIAL)	RIVER OR STREAM (PERENNIAL)
LAKE, POND OR RESERVOIR	LAKE, POND OR RESERVOIR	LAKE, POND OR RESERVOIR	LAKE, POND OR RESERVOIR
STREAM (INTERMITTENT)	STREAM (INTERMITTENT)	STREAM (INTERMITTENT)	STREAM (INTERMITTENT)
DRAINAGE DITCH	DRAINAGE DITCH	DRAINAGE DITCH	DRAINAGE DITCH
WETLAND	WETLAND	WETLAND	WETLAND
ISLAND OR LAND	ISLAND OR LAND	ISLAND OR LAND	ISLAND OR LAND
REGIONAL WATERSHED	REGIONAL WATERSHED	REGIONAL WATERSHED	REGIONAL WATERSHED



Population (U.S. Census 2010): 128



To request information from this document in an alternative format, call 651-366-4718 or 1-800-657-3774 (Greater Minnesota); 711 or 1-800-627-3529 (Minnesota Relay). You may also send an e-mail to ADRequest.dot@state.mn.us. (Please request at least one week in advance.)