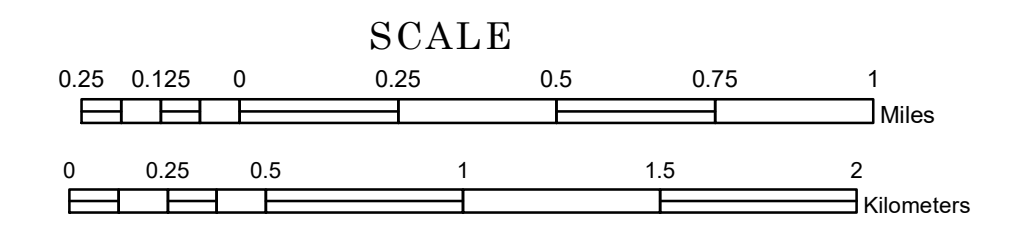


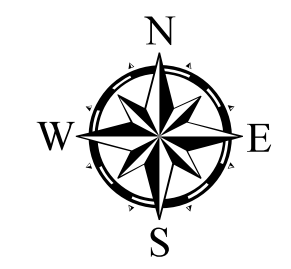
TOWNSHIP OF HEGBERT

PREPARED BY THE
MINNESOTA DEPARTMENT OF TRANSPORTATION
OFFICE OF TRANSPORTATION SYSTEM MANAGEMENT

IN COOPERATION WITH
U.S. DEPARTMENT OF TRANSPORTATION
FEDERAL HIGHWAY ADMINISTRATION

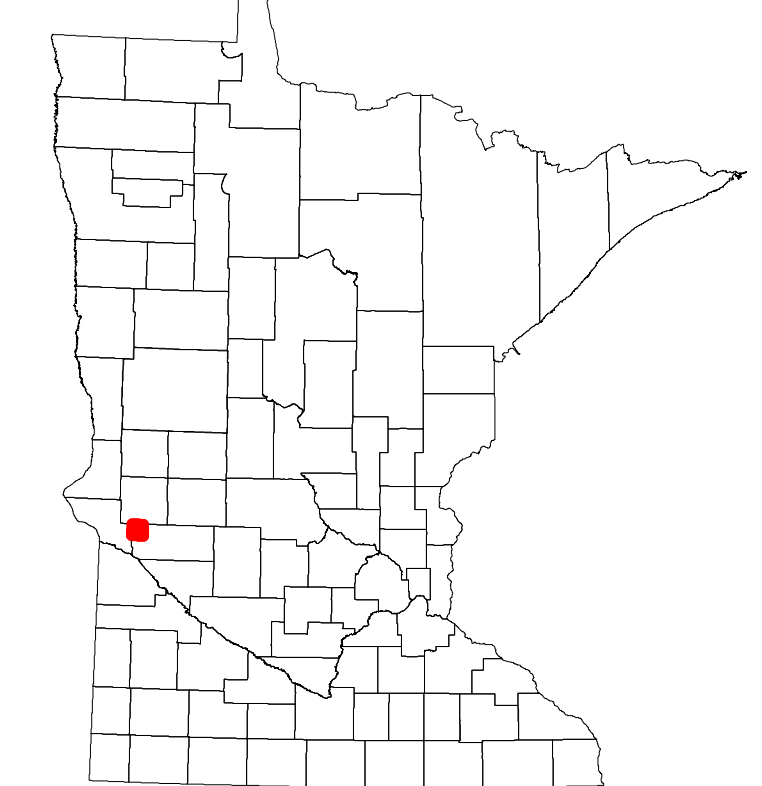


Projection:
Transverse Mercator
NAD 1986
UTM Zone 15

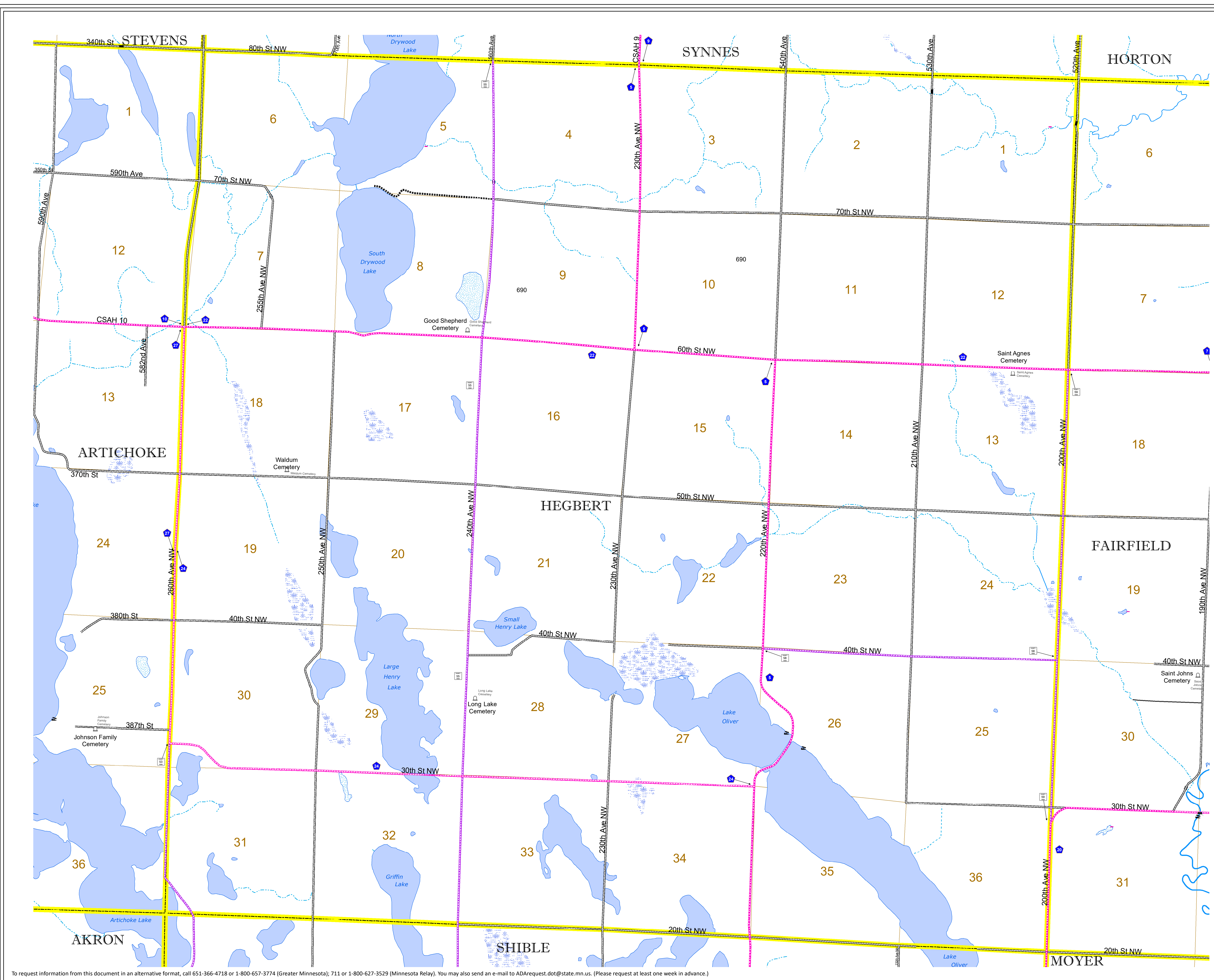


North American Datum
of 1986

ROAD AND ROADWAY FEATURES		AVIATION FEATURES	
INTERSTATE	CONCRETE	COMMERCIAL AIRPORT	GENERAL AIRPORT
US HIGHWAY	BITUMINOUS	AIRSTRIP	SEAPLANE
MN HIGHWAY	GRAVEL	AIRPORT RUNWAY	BOUNDARY FEATURES
COUNTY STATE AID HIGHWAY	DIRT/UNIMPROVED	TRAIL	TRIBAL LAND
COUNTY ROAD	DIRT/UNIMPROVED	STATE OF MINNESOTA	COUNTY
TOWNSHIP ROAD	OTHER	MUNICIPALITY	MUNICIPALITY
UNORGANIZED TERRITORY ROAD	UNKNOWN	UNORGANIZED TERRITORY	UNORGANIZED TERRITORY
OTHER ROADS	RAMP OR CONNECTOR	FEDERAL ADJUSTED URBAN AREA (2014)	CIVIL TOWNSHIP
Municipal	INTERSTATE EXIT	CONGRESSIONAL TOWNSHIP	SECTION
Private	AVIATION FEATURES	MILITARY	MILITARY
National Monument	COMMERCIAL AIRPORT	VOYAGEURS NATIONAL PARK	VOYAGEURS NATIONAL PARK
State Forest	GENERAL AIRPORT	BOUNDARY WATERS CANOE AREA WILDERNESS	BOUNDARY WATERS CANOE AREA WILDERNESS
National Park	AIRSTRIP	STATE PARK	STATE PARK
National Wildlife Refuge	SEAPLANE	REGIONAL PARK	REGIONAL PARK
State Park	AIRPORT RUNWAY	NATIONAL FOREST	NATIONAL FOREST
Preserve	BOUNDARY FEATURES	NATIONAL AND STATE FOREST	NATIONAL AND STATE FOREST
RAILROAD AND RAILWAY FEATURES	TRAIL	STATE FOREST	STATE FOREST
EMPIRE BUILDER STATION (AMTRAK)	TRIBAL LAND	NATIONAL TRAIL	NATIONAL TRAIL
NORTHSTAR STATION (COMMUTER)	STATE OF MINNESOTA	WILDLIFE REFUGE AREA	WILDLIFE REFUGE AREA
LIGHT RAIL	COUNTY	WILDLIFE MANAGEMENT AREA	WILDLIFE MANAGEMENT AREA
BLUE LINE	MUNICIPALITY	HYDROLOGIC FEATURES	HYDROLOGIC FEATURES
GREEN LINE	UNORGANIZED TERRITORY	RIVER OR STREAM (PERMANENT)	RIVER OR STREAM (PERMANENT)
INFRASTRUCTURE FEATURES	FEDERAL ADJUSTED URBAN AREA (2014)	LAKE, POND OR RESERVOIR	LAKE, POND OR RESERVOIR
LONG BRIDGE (200' OR GREATER SPAN)	CIVIL TOWNSHIP	STREAM (INTERMITTENT)	STREAM (INTERMITTENT)
MAJOR BRIDGE (20' TO 200' SPAN)	CONGRESSIONAL TOWNSHIP	DRAINAGE DITCH	DRAINAGE DITCH
MINOR BRIDGE (5' TO 20' SPAN)	SECTION	HISTORIC DISTRICT	HISTORIC DISTRICT
DAM	MILITARY	HISTORIC SITE	HISTORIC SITE
LOCK AND DAM	VOYAGEURS NATIONAL PARK	MONUMENT	MONUMENT
CITY CENTERS	BOUNDARY WATERS CANOE AREA WILDERNESS	REGIONAL WATERSHED	REGIONAL WATERSHED
STATE CAPITAL	STATE PARK		
COUNTY SEAT	REGIONAL PARK		
CITY CENTER	NATIONAL FOREST		
UNINCORPORATED COMMUNITY	NATIONAL AND STATE FOREST		
PUBLIC SERVICE FEATURES	STATE FOREST		
MNDOT OFFICE	NATIONAL TRAIL		
MNDOT TRUCK STATION	WILDLIFE REFUGE AREA		
HIGHWAY PATROL DISTRICT OFFICE	WILDLIFE MANAGEMENT AREA		
STATE TRAVEL INFORMATION CENTER	HYDROLOGIC FEATURES		
REST AREA (FULL SERVICE)	RIVER OR STREAM (PERMANENT)		
REST AREA (VAULT TOILET)	LAKE, POND OR RESERVOIR		
WAYSIDE (VAULT OR PIT TOILET)	STREAM (INTERMITTENT)		
PARK AND RIDE LOT	DRAINAGE DITCH		
PORT OF ENTRY	HISTORIC DISTRICT		
PUBLIC ACCESS POINT	HISTORIC SITE		
MN STATE COLLEGE AND UNIVERSITY SYSTEM (MNSCU)	MONUMENT		
UNIVERSITY OF MN SYSTEM	REGIONAL WATERSHED		
FAIRGROUNDS			
CULTURAL FEATURES			
STATE HISTORICAL MARKER			
HISTORIC DISTRICT			
HISTORIC SITE			
MONUMENT			



Population (U.S. Census 2010): 93



To request information from this document in an alternative format, call 651-366-4718 or 1-800-657-3774 (Greater Minnesota); 711 or 1-800-627-3529 (Minnesota Relay). You may also send an e-mail to ADARquest.dot@state.mn.us. (Please request at least one week in advance.)