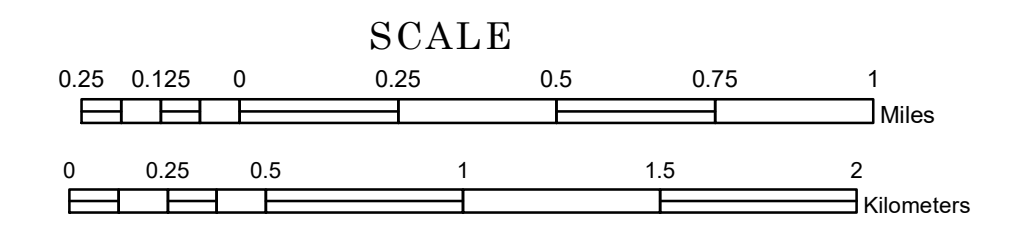


TOWNSHIP OF ROOME

PREPARED BY THE
MINNESOTA DEPARTMENT OF TRANSPORTATION
OFFICE OF TRANSPORTATION SYSTEM MANAGEMENT

IN COOPERATION WITH
U.S. DEPARTMENT OF TRANSPORTATION
FEDERAL HIGHWAY ADMINISTRATION



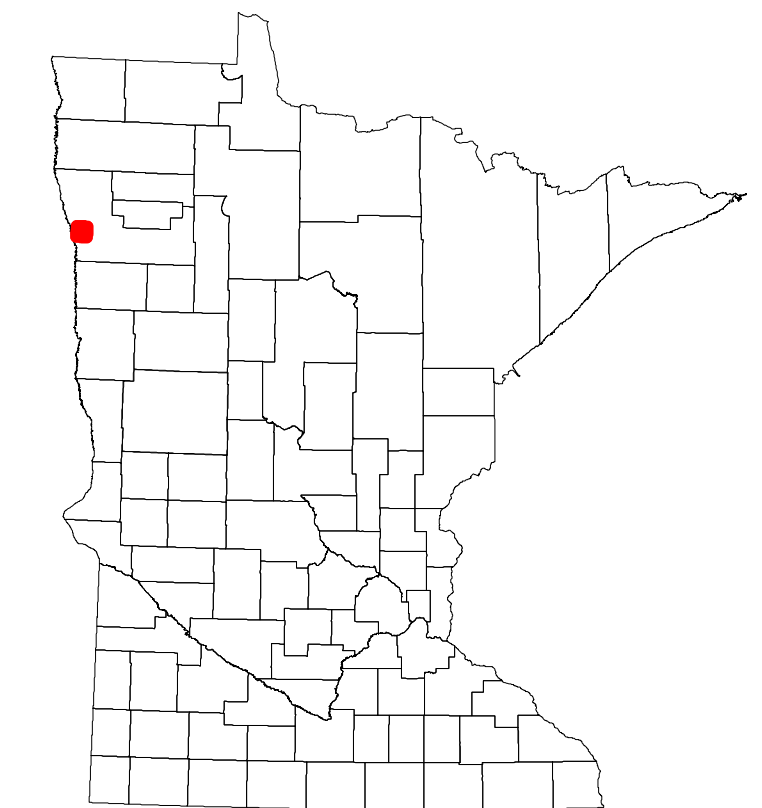
1 in = 1,600 ft
2024

Projection:
Transverse Mercator
NAD 1986
UTM Zone 15

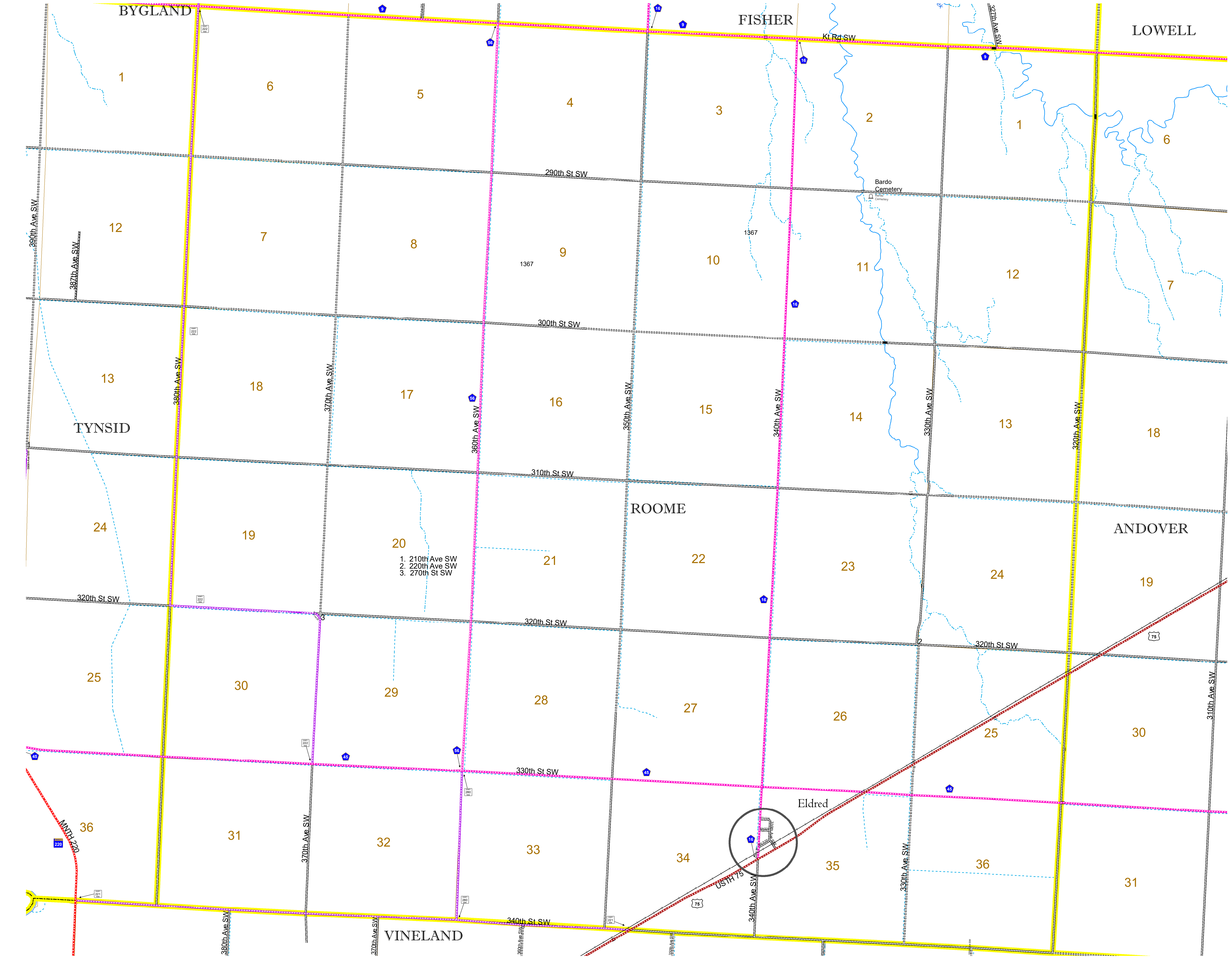


North American Datum
of 1986

ROAD AND ROADWAY FEATURES				
INTERSTATE	CONCRETE			
US HIGHWAY	BITUMINOUS			
MN HIGHWAY	GRAVEL			
COUNTY STATE AID HIGHWAY	DIRT/UNIMPROVED			
COUNTY ROAD	OTHER			
TOWNSHIP ROAD	UNKNOWN			
UNORGANIZED TERRITORY ROAD				
OTHER ROADS	RAMP OR CONNECTOR			
Municipal	Private	National Monument	State Forest	INTERSTATE EXIT
Nature Service	National Park	National Wildlife	State Game	AVIATION FEATURES
Military	National Forest	State Park	Preserve	COMMERCIAL AIRPORT
RAILROAD AND RAILWAY FEATURES				GENERAL AIRPORT
EMPIRE BUILDER STATION (AMTRAK)				AIRSTRIP
NORTHSTAR STATION (COMMITTEE)				SEAPLANE
LIGHT RAIL				AIRPORT RUNWAY
BLUE LINE				
GREEN LINE				BOUNDARY FEATURES
INFRASTRUCTURE FEATURES				TRIBAL LAND
LONG BRIDGE (200' or Greater Span)				STATE OF MINNESOTA
MAJOR BRIDGE (20' to 200' Span)				COUNTY
MINOR BRIDGE (5' to 20' Span)				MUNICIPALITY
DAM				UNORGANIZED TERRITORY
LOCK-AND-DAM				FEDERAL ADJUSTED URBAN AREA (2014)
CITY CENTERS				CIVIL TOWNSHIP
STATE CAPITAL	COUNTY SEAT	CITY CENTER	UNINCORPORATED COMMUNITY	CONGRESSIONAL TOWNSHIP
PUBLIC SERVICE FEATURES				SECTION
MNDOT OFFICE				MILITARY
MNDOT TRUCK STATION				VOYAGEURS NATIONAL PARK
HIGHWAY PATROL DISTRICT OFFICE				BOUNDARY WATERS CANOE AREA WILDERNESS
STATE TRAVEL INFORMATION CENTER				STATE PARK
REST AREA (Full Service)				REGIONAL PARK
REST AREA (Vault Toilet)				NATIONAL FOREST
WAYSIDE (Vault or Potty Toilet)				NATIONAL AND STATE FOREST
PARK AND RIDE LOT				STATE FOREST
PORT OF ENTRY				NATIONAL TRAIL
PUBLIC ACCESS POINT				WILDLIFE REFUGUE AREA
MN STATE COLLEGE AND UNIVERSITY SYSTEM (MNSCU)				WILDLIFE MANAGEMENT AREA
UNIVERSITY OF MN SYSTEM				HYDROLOGIC FEATURES
FAIRGROUNDS				RIVER OR STREAM (PERMANENT)
CULTURAL FEATURES				LAKE, POND OR RESERVOIR
STATE HISTORICAL MARKER				STREAM (INTERMITTENT)
HISTORIC DISTRICT				DRAINAGE DITCH
HISTORIC SITE				WETLAND
MONUMENT				ISLAND OR LAND
				REGIONAL WATERSHED



Population (U.S. Census 2010): 177



To request information from this document in an alternative format, call 651-366-4718 or 1-800-657-3774 (Greater Minnesota); 711 or 1-800-627-3529 (Minnesota Relay). You may also send an e-mail to ADARrequest.dot@state.mn.us. (Please request at least one week in advance.)