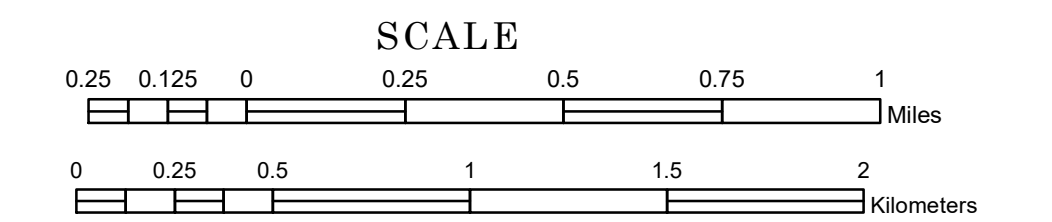


TOWNSHIP OF NORTHLAND

PREPARED BY THE
MINNESOTA DEPARTMENT OF TRANSPORTATION
OFFICE OF TRANSPORTATION SYSTEM MANAGEMENT

IN COOPERATION WITH
U.S. DEPARTMENT OF TRANSPORTATION
FEDERAL HIGHWAY ADMINISTRATION



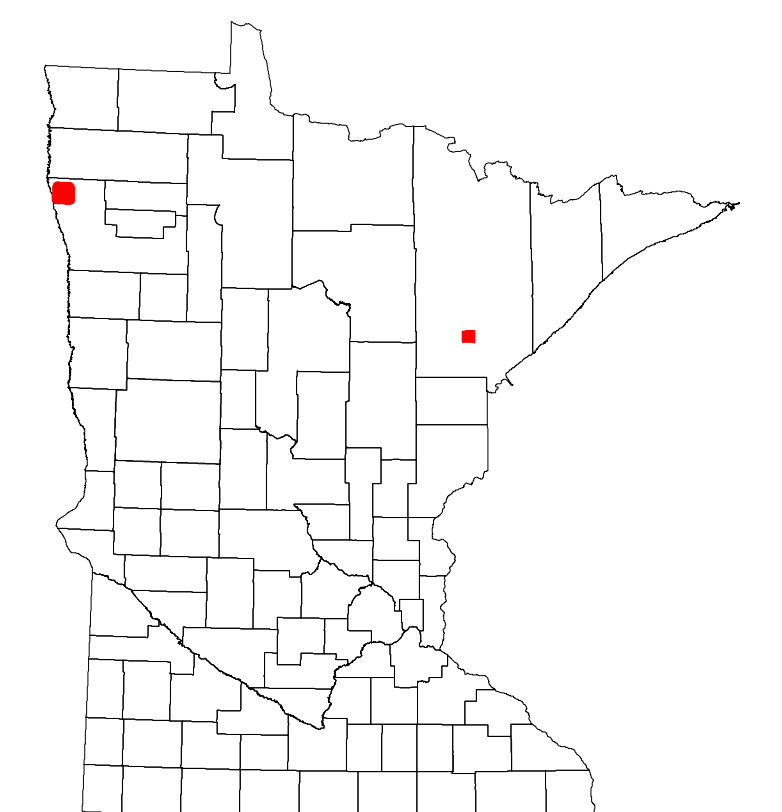
1 in = 1,600 ft
2024

Projection:
Transverse Mercator
NAD 1986
UTM Zone 15

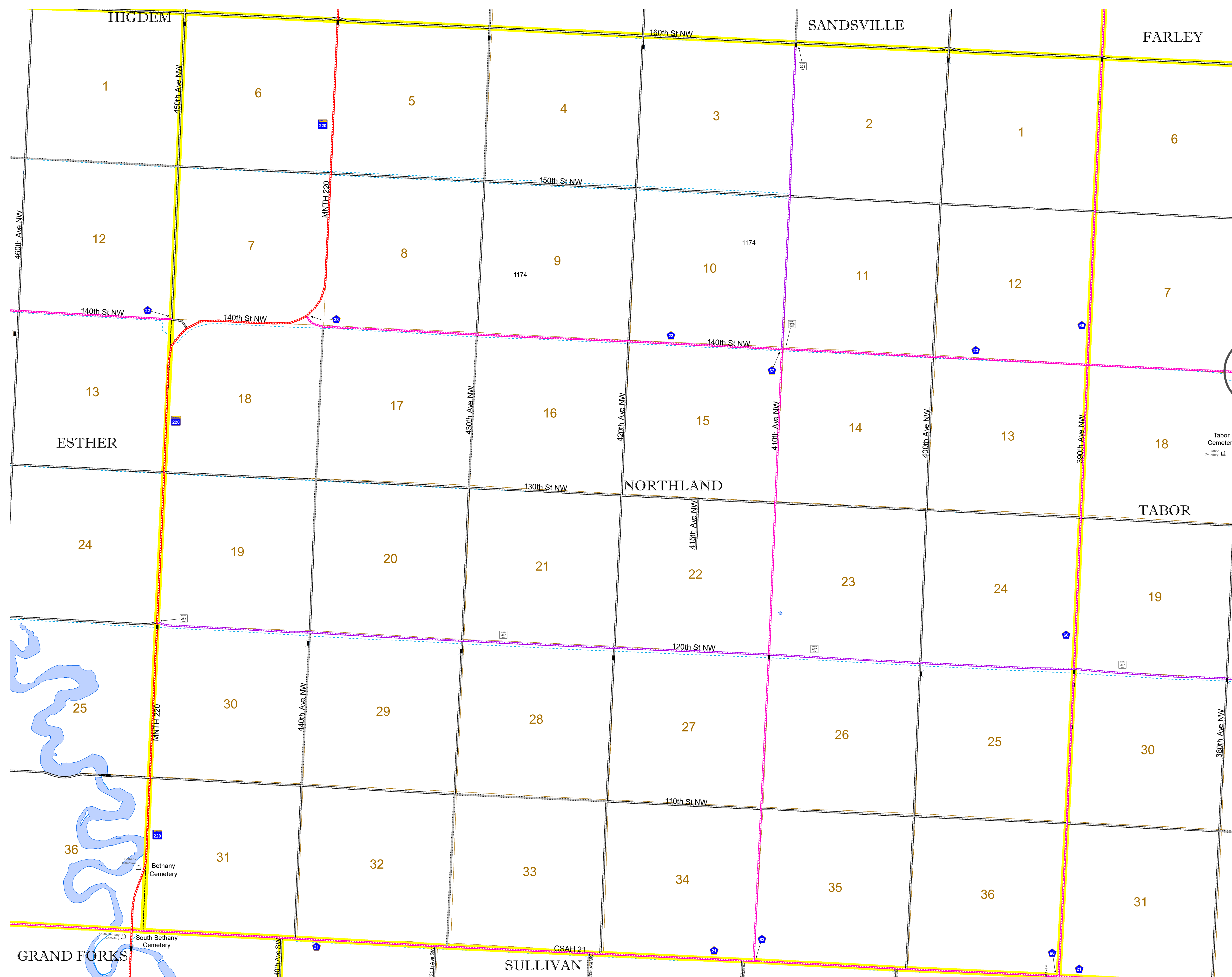


North American Datum
of 1986

<ul style="list-style-type: none"> INTERSTATE US HIGHWAY MN HIGHWAY COUNTY STATE AID HIGHWAY COUNTY ROAD TOWNSHIP ROAD UNORGANIZED TERRITORY ROAD OTHER ROADS MUNICIPAL PRIVATE NATIONAL MONUMENT STATE FOREST NATIONAL SERVICE NATIONAL PARK NATIONAL WILDLIFE STATE GAME MILITARY NATIONAL FOREST STATE PARK PRESERVE 	<ul style="list-style-type: none"> CONCRETE BITUMINOUS GRAVEL DIRT/UNIMPROVED OTHER UNKNOWN RAMP OR CONNECTOR INTERSTATE EXIT GREAT RIVER ROAD RAILROAD AND RAILWAY FEATURES EMPIRE BUILDER STATION (AMTRAK) NORTHSTAR STATION (COMMUTER) LIGHT RAIL BLUE LINE GREEN LINE INFRASTRUCTURE FEATURES LONG BRIDGE (300' OR GREATER SPAN) MAJOR BRIDGE (20' TO 300' SPAN) MINOR BRIDGE (5' TO 20' SPAN) DAM LOCK-AND-DAM CITY CENTERS STATE CAPITAL COUNTY SEAT CITY CENTER UNINCORPORATED COMMUNITY PUBLIC SERVICE FEATURES MNDOT OFFICE MNDOT TRUCK STATION HIGHWAY PATROL DISTRICT OFFICE STATE TRAVEL INFORMATION CENTER REST AREA (FULL SERVICE) REST AREA (VAULT TOILET) WAYSIDE (VAULT OR PIT TOILET) PARK AND RIDE LOT PORT OF ENTRY PUBLIC ACCESS POINT MN STATE COLLEGE AND UNIVERSITY SYSTEM (MNSCU) UNIVERSITY OF MN SYSTEM FAIRGROUNDS CULTURAL FEATURES STATE HISTORICAL MARKER HISTORIC DISTRICT HISTORIC SITE MONUMENT 	<ul style="list-style-type: none"> AVIATION FEATURES COMMERCIAL AIRPORT GENERAL AIRPORT AIRSTRIP SEAPLANE AIRPORT RUNWAY BOUNDARY FEATURES TRIBAL LAND STATE OF MINNESOTA COUNTY MUNICIPALITY UNORGANIZED TERRITORY FEDERAL ADJUSTED URBAN AREA (2014) CIVIL TOWNSHIP CONGRESSIONAL TOWNSHIP SECTION MILITARY VOYAGEURS NATIONAL PARK BOUNDARY WATERS CANOE AREA WILDERNESS STATE PARK REGIONAL PARK NATIONAL FOREST NATIONAL AND STATE FOREST STATE FOREST NATIONAL TRAIL WILDLIFE REFUGE AREA WILDLIFE MANAGEMENT AREA HYDROLOGIC FEATURES RIVER OR STREAM (PERENNIAL) LAKE, POND OR RESERVOIR STREAM (INTERMITTENT) DRAINAGE DITCH WETLAND ISLAND OR LAND REGIONAL WATERSHED
---	--	--



Population (U.S. Census 2010): 160



To request information from this document in an alternative format, call 651-366-4718 or 1-800-657-3774 (Greater Minnesota); 711 or 1-800-627-3529 (Minnesota Relay). You may also send an e-mail to ADRequest.dot@state.mn.us. (Please request at least one week in advance.)