

TOWNSHIP OF HILL RIVER

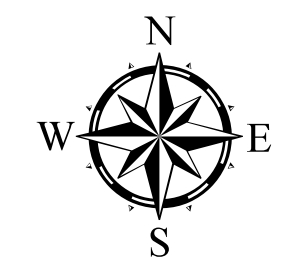
PREPARED BY THE
MINNESOTA DEPARTMENT OF TRANSPORTATION
OFFICE OF TRANSPORTATION SYSTEM MANAGEMENT

IN COOPERATION WITH
U.S. DEPARTMENT OF TRANSPORTATION
FEDERAL HIGHWAY ADMINISTRATION



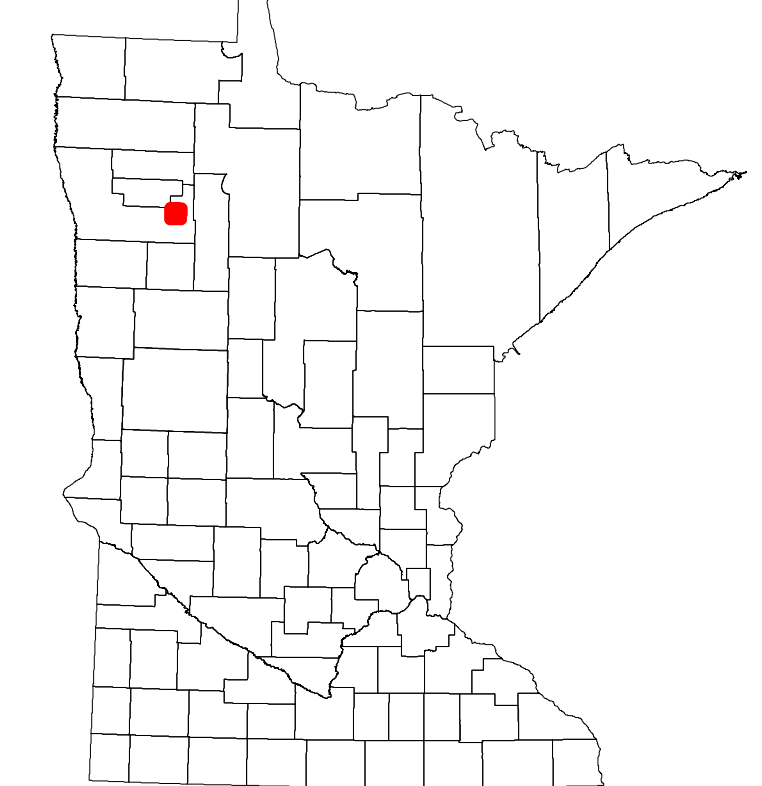
1 in = 1,600 ft
2024

Projection:
Transverse Mercator
NAD 1986
UTM Zone 15

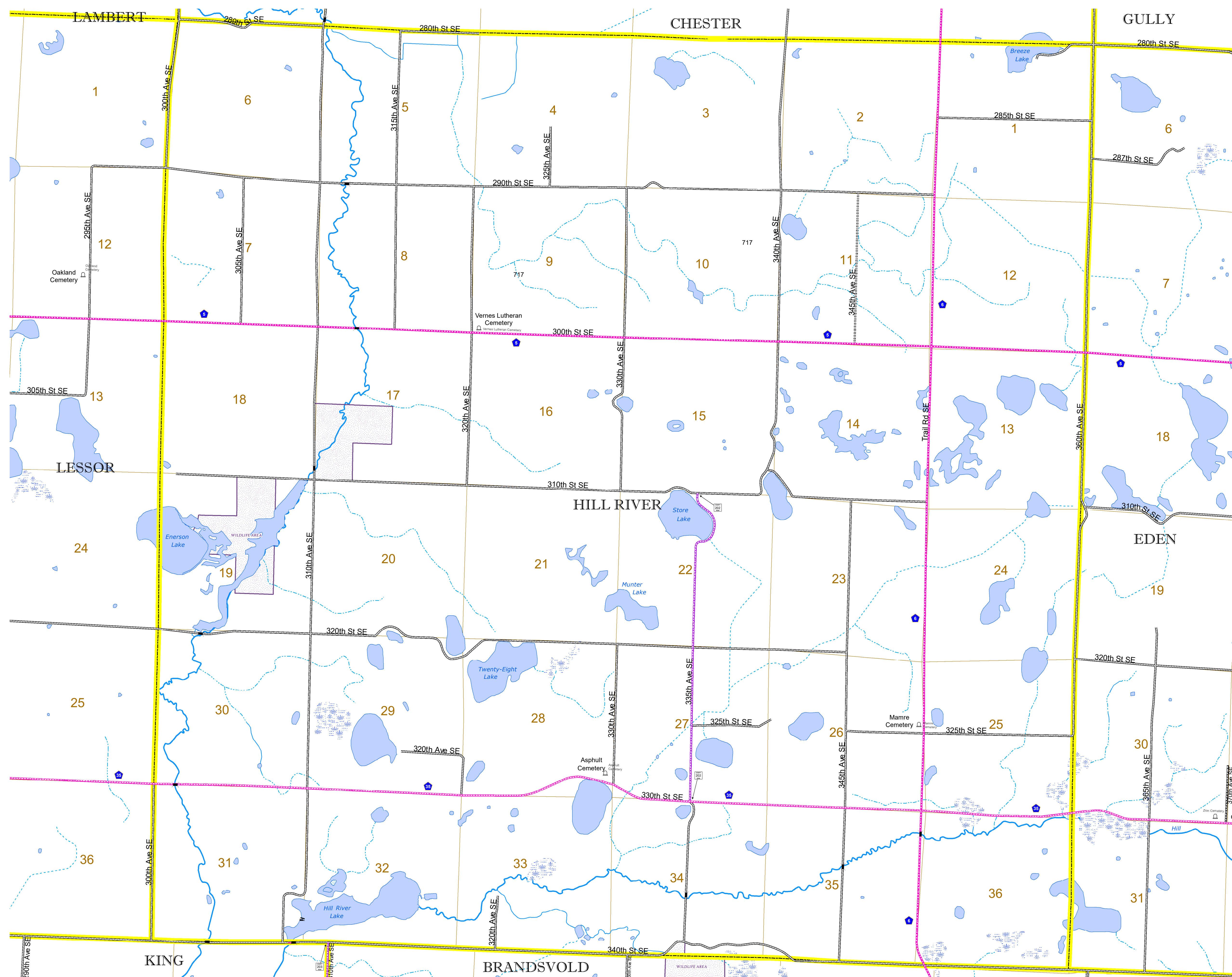


North American Datum
of 1986

ROAD AND ROADWAY FEATURES		AVIATION FEATURES	
INTERSTATE	CONCRETE	COMMERCIAL AIRPORT	GENERAL AIRPORT
US HIGHWAY	BITUMINOUS	AIRSTRIP	SEAPLANE
MN HIGHWAY	GRAVEL	AIRPORT RUNWAY	BOUNDARY FEATURES
COUNTY STATE AID HIGHWAY	DIRT/UNIMPROVED	TRIAL LAND	TRIBAL LAND
COUNTY ROAD	OTHER	STATE OF MINNESOTA	COUNTY
TOWNSHIP ROAD	UNKNOWN	MUNICIPALITY	MUNICIPALITY
UNORGANIZED TERRITORY ROAD		UNORGANIZED TERRITORY	FEDERAL ADJUSTED URBAN AREA (2014)
OTHER ROADS		CIVIL TOWNSHIP	CIVIL TOWNSHIP
Municipal	RAMP OR CONNECTOR	CONGRESSIONAL TOWNSHIP	SECTION
Private	INTERSTATE EXIT	MILITARY	VOYAGEURS NATIONAL PARK
National Monument	GREAT RIVER ROAD	VOYAGEURS NATIONAL PARK	BOUNDARY WATERS CANOE AREA WILDERNESS
National Wildlife Refuge		STATE FOREST	STATE PARK
State Park		NATIONAL FOREST	REGIONAL PARK
Preserve		NATIONAL AND STATE FOREST	NATIONAL FOREST
		STATE FOREST	WILDLIFE REFUGUE AREA
		NATIONAL TRAIL	WILDLIFE MANAGEMENT AREA
		WILDLIFE REFUGUE AREA	HYDROLOGIC FEATURES
		WILDLIFE MANAGEMENT AREA	RIVER OR STREAM (PERMANENT)
		HYDROLOGIC FEATURES	LAKE, POND OR RESERVOIR
		RIVER OR STREAM (PERMANENT)	STREAM (INTERMITTENT)
		LAKE, POND OR RESERVOIR	DRAINAGE DITCH
		STREAM (INTERMITTENT)	WETLAND
		DRAINAGE DITCH	ISLAND OR LAND
		WETLAND	REGIONAL WATERSHED
		ISLAND OR LAND	
		REGIONAL WATERSHED	



Population (U.S. Census 2010): 157



To request information from this document in an alternative format, call 651-366-4718 or 1-800-657-3774 (Greater Minnesota); 711 or 1-800-627-3529 (Minnesota Relay). You may also send an e-mail to ADRequest.dot@state.mn.us. (Please request at least one week in advance.)