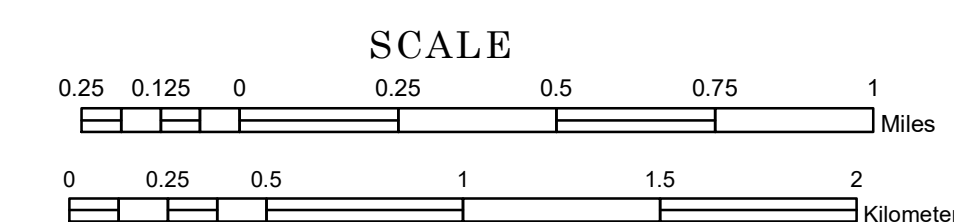


# TOWNSHIP OF SUNDAL

PREPARED BY THE  
MINNESOTA DEPARTMENT OF TRANSPORTATION  
OFFICE OF TRANSPORTATION SYSTEM MANAGEMENT

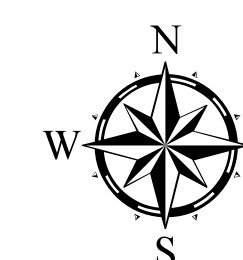
IN COOPERATION WITH  
U.S. DEPARTMENT OF TRANSPORTATION  
FEDERAL HIGHWAY ADMINISTRATION



1 in = 1,600 ft

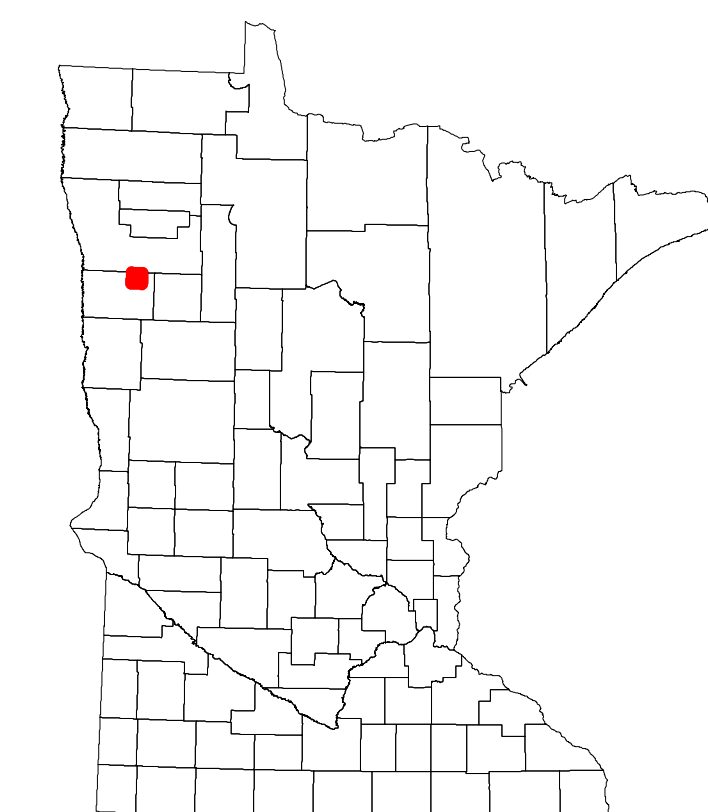
2023

Projection:  
Transverse Mercator  
NAD 1986  
UTM Zone 15

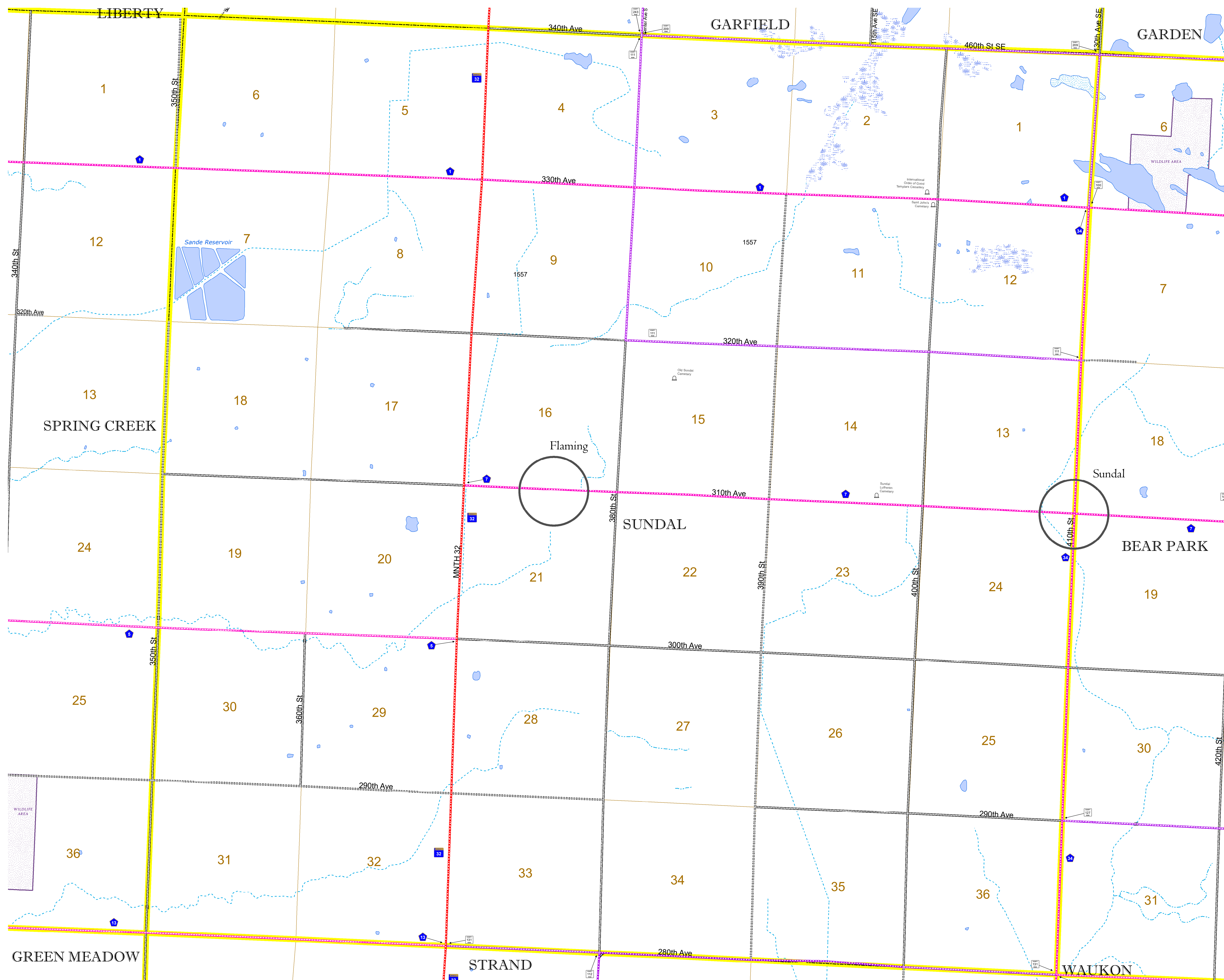


North American Datum  
of 1986

ROAD AND ROADWAY FEATURES		AVIATION FEATURES	
INTERSTATE	CONCRETE	COMMERCIAL AIRPORT	GENERAL AIRPORT
US HIGHWAY	BITUMINOUS	NORTHSTAR STATION (COMMUTER)	AIRSTRIP
MN HIGHWAY	GRAVEL	SEAPLANE	AIRPORT RUNWAY
COUNTY STATE AID HIGHWAY	DIRT/UNIMPROVED	OTHER	UNKNOWN
COUNTY ROAD	UNKNOWN	OTHER ROADS	RAMP OR CONNECTOR
TOWNSHIP ROAD	UNKNOWN	Municipal	Private
UNORGANIZED TERRITORY ROAD	UNKNOWN	National Monument	State Forest
RAILROAD AND RAILWAY FEATURES	RAILROAD AND RAILWAY FEATURES	Nature Service	National Wildlife
EMPIRE BUILDER STATION (AMTRAK)	EMPIRE BUILDER STATION (AMTRAK)	Muslim	Preserve
LONG BRIDGE (200' OR GREATER SPAN)	LONG BRIDGE (200' OR GREATER SPAN)	STATE CAPITAL	CITY SEAT
MAJOR BRIDGE (20' TO 200' SPAN)	MAJOR BRIDGE (20' TO 200' SPAN)	CITY CENTER	UNINCORPORATED COMMUNITY
MINOR BRIDGE (5' TO 20' SPAN)	MINOR BRIDGE (5' TO 20' SPAN)	MNDOT OFFICE	HIGHWAY PATROL DISTRICT OFFICE
LOCK AND DAM	LOCK AND DAM	STATE TRAVEL INFORMATION CENTER	REST AREA (FULL SERVICE)
CITY CENTERS	CITY CENTERS	REST AREA (VAULT TOILET)	WAYSIDE (VAULT OR PITY TOILET)
STATE CAPITAL	CITY SEAT	PARK AND RIDE LOT	PORT OF ENTRY
COUNTY SEAT	CITY CENTER	PUBLIC ACCESS POINT	MN STATE COLLEGE AND UNIVERSITY SYSTEM (MNSCU)
CITY CENTER	UNINCORPORATED COMMUNITY	UNIVERSITY OF MN SYSTEM	FAIRGROUNDS
SECTION	MILITARY	CULTURAL FEATURES	STATE HISTORICAL MARKER
VOYAGEURS NATIONAL PARK	BOUNDARY WATERS CANOE AREA WILDERNESS	HISTORIC DISTRICT	HISTORIC SITE
STATE PARK	REGIONAL PARK	HISTORIC DISTRICT	HISTORIC SITE
NATIONAL FOREST	NATIONAL AND STATE FOREST	MONUMENT	
STATE FOREST	NATIONAL TRAIL		
WILDLIFE REFUGUE AREA	WILDLIFE MANAGEMENT AREA		
HYDROLOGIC FEATURES	RIVER OR STREAM (PERENNIAL)		
LAKE, POND OR RESERVOIR	STREAM (INTERMITTENT)		
WETLAND	ISLAND OR LAND		
REGIONAL WATERSHED			



Population (U.S. Census 2010): 157



To request information from this document in an alternative format, call 651-366-4718 or 1-800-657-3774 (Greater Minnesota); 711 or 1-800-627-3529 (Minnesota Relay). You may also send an e-mail to ADAREquest.dot@state.mn.us. (Please request at least one week in advance.)