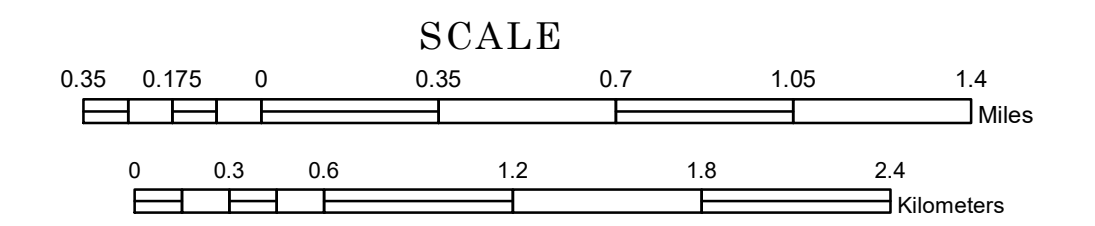


# TOWNSHIP OF VIKING

PREPARED BY THE  
MINNESOTA DEPARTMENT OF TRANSPORTATION  
OFFICE OF TRANSPORTATION SYSTEM MANAGEMENT

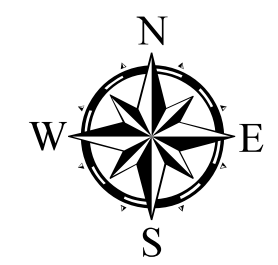
IN COOPERATION WITH  
U.S. DEPARTMENT OF TRANSPORTATION  
FEDERAL HIGHWAY ADMINISTRATION



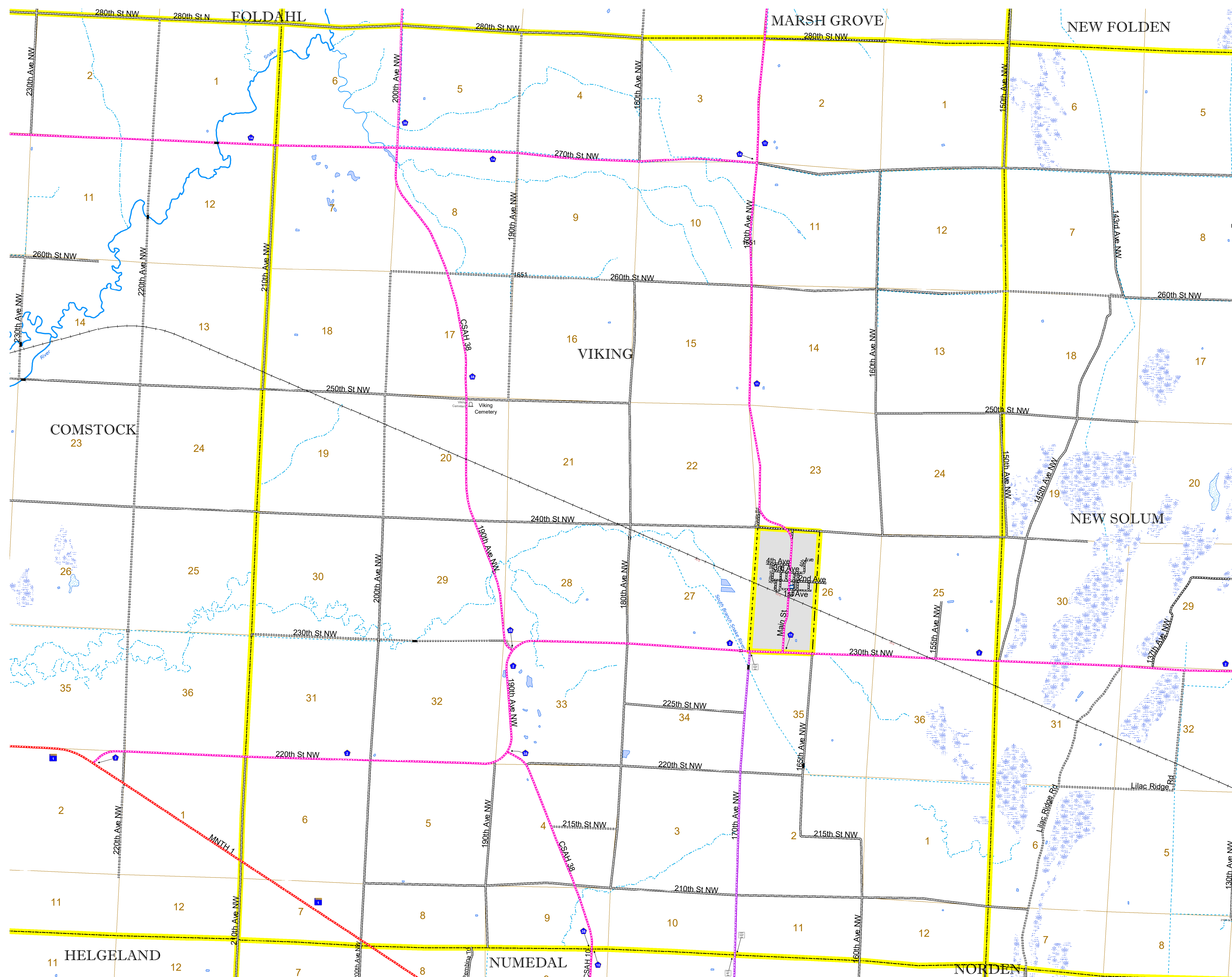
1 in = 2,000 ft

2024

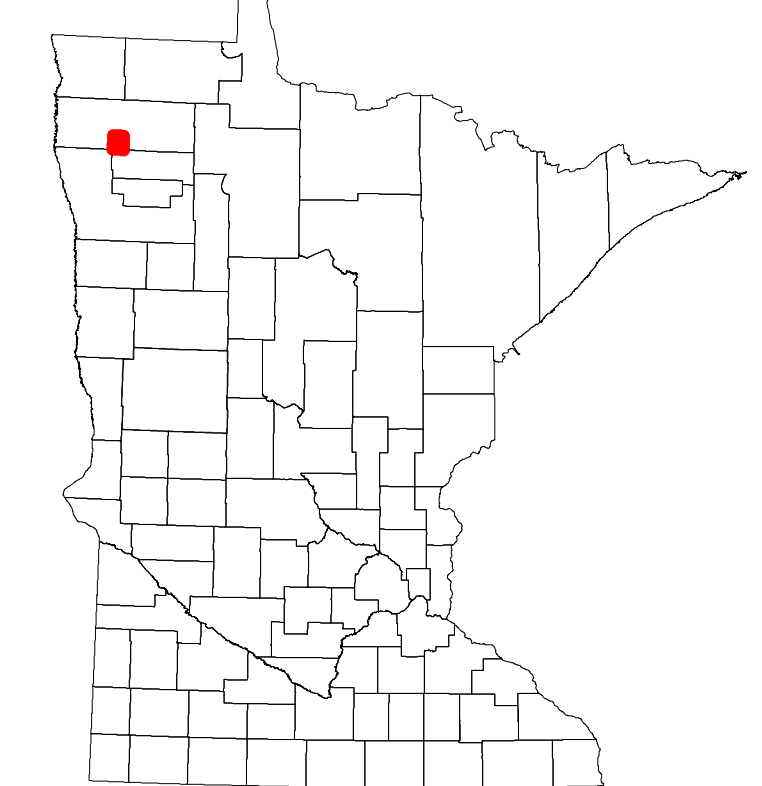
Projection:  
Transverse Mercator  
NAD 1986  
UTM Zone 15



North American Datum  
of 1986



ROAD AND ROADWAY FEATURES		AVIATION FEATURES	
INTERSTATE	CONCRETE	COMMERCIAL AIRPORT	GENERAL AIRPORT
US HIGHWAY	BITUMINOUS	AIRSTRIP	SEAPLANE
MN HIGHWAY	GRAVEL	AIRPORT RUNWAY	BOUNDARY FEATURES
COUNTY STATE AID HIGHWAY	DIRT/UNIMPROVED		
COUNTY ROAD	OTHER		
TOWNSHIP ROAD	UNKNOWN		
UNORGANIZED TERRITORY ROAD			
OTHER ROADS			
Municipal	RAMP OR CONNECTOR		
Private	INTERSTATE EXIT		
National Monument	GREAT RIVER ROAD		
Nature Service			
National Park			
National Wildlife			
State Game			
Museum			
State Park			
Present			
RAILROAD AND RAILWAY FEATURES		CITY CENTERS	
EMPIRE BUILDER STATION (AMTRAK)	STATE OF MINNESOTA	STATE CAPITAL	CITY CENTER
NORTHSTAR STATION (COMMUTER)	COUNTY	COUNTY SEAT	CITY CENTER
LIGHT RAIL	MUNICIPALITY		
BLUE LINE	UNORGANIZED TERRITORY		
GREEN LINE	FEDERAL ADJUSTED URBAN AREA (2014)		
	CIVIL TOWNSHIP		
	CONGRESSIONAL TOWNSHIP		
	SECTION		
	MILITARY		
	VOYAGEURS NATIONAL PARK		
	BOUNDARY WATERS CANOE AREA WILDERNESS		
	STATE PARK		
	REGIONAL PARK		
	NATIONAL FOREST		
	NATIONAL AND STATE FOREST		
	STATE FOREST		
	NATIONAL TRAIL		
	WILDLIFE REFUGUE AREA		
	WILDLIFE MANAGEMENT AREA		
	HYDROLOGIC FEATURES		
	RIVER OR STREAM (PERMANENT)		
	LAKE, POND OR RESERVOIR		
	STREAM (INTERMITTENT)		
	DRAINAGE DITCH		
	WETLAND		
	ISLAND OR LAND		
	REGIONAL WATERSHED		
INFRASTRUCTURE FEATURES		PUBLIC SERVICE FEATURES	
LONG BRIDGE (200' OR GREATER SPAN)	MNDOT OFFICE	MNDOT OFFICE	
MAJOR BRIDGE (20' TO 200' SPAN)	MNDOT TRUCK STATION	HIGHWAY PATROL DISTRICT OFFICE	
MINOR BRIDGE (5' TO 20' SPAN)	STATE TRAVEL INFORMATION CENTER	REST AREA (FULL SERVICE)	
DAM	REST AREA (VAULT TOILET)	WAYSIDE (VAULT OR PIT TOILET)	
	PARK AND RIDE LOT	PORT OF ENTRY	
	PUBLIC ACCESS POINT	MN STATE COLLEGE AND UNIVERSITY SYSTEM (MNSCU)	
	UNIVERSITY OF MN SYSTEM	FAIRGROUNDS	
	CULTURAL FEATURES	STATE HISTORICAL MARKER	
	HISTORIC DISTRICT	HISTORIC SITE	
	MONUMENT		



Population (U.S. Census 2010): 156

To request information from this document in an alternative format, call 651-366-4718 or 1-800-657-3774 (Greater Minnesota); 711 or 1-800-627-3529 (Minnesota Relay). You may also send an e-mail to ADArequest.dot@state.mn.us. (Please request at least one week in advance.)