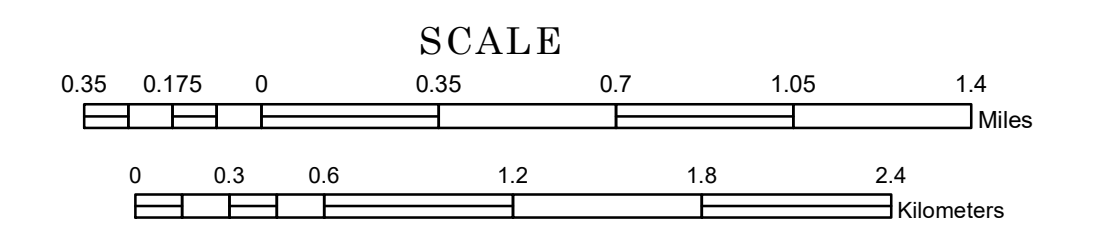


# TOWNSHIP OF OAK PARK

PREPARED BY THE  
MINNESOTA DEPARTMENT OF TRANSPORTATION  
OFFICE OF TRANSPORTATION SYSTEM MANAGEMENT

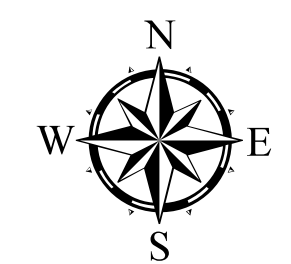
IN COOPERATION WITH  
U.S. DEPARTMENT OF TRANSPORTATION  
FEDERAL HIGHWAY ADMINISTRATION



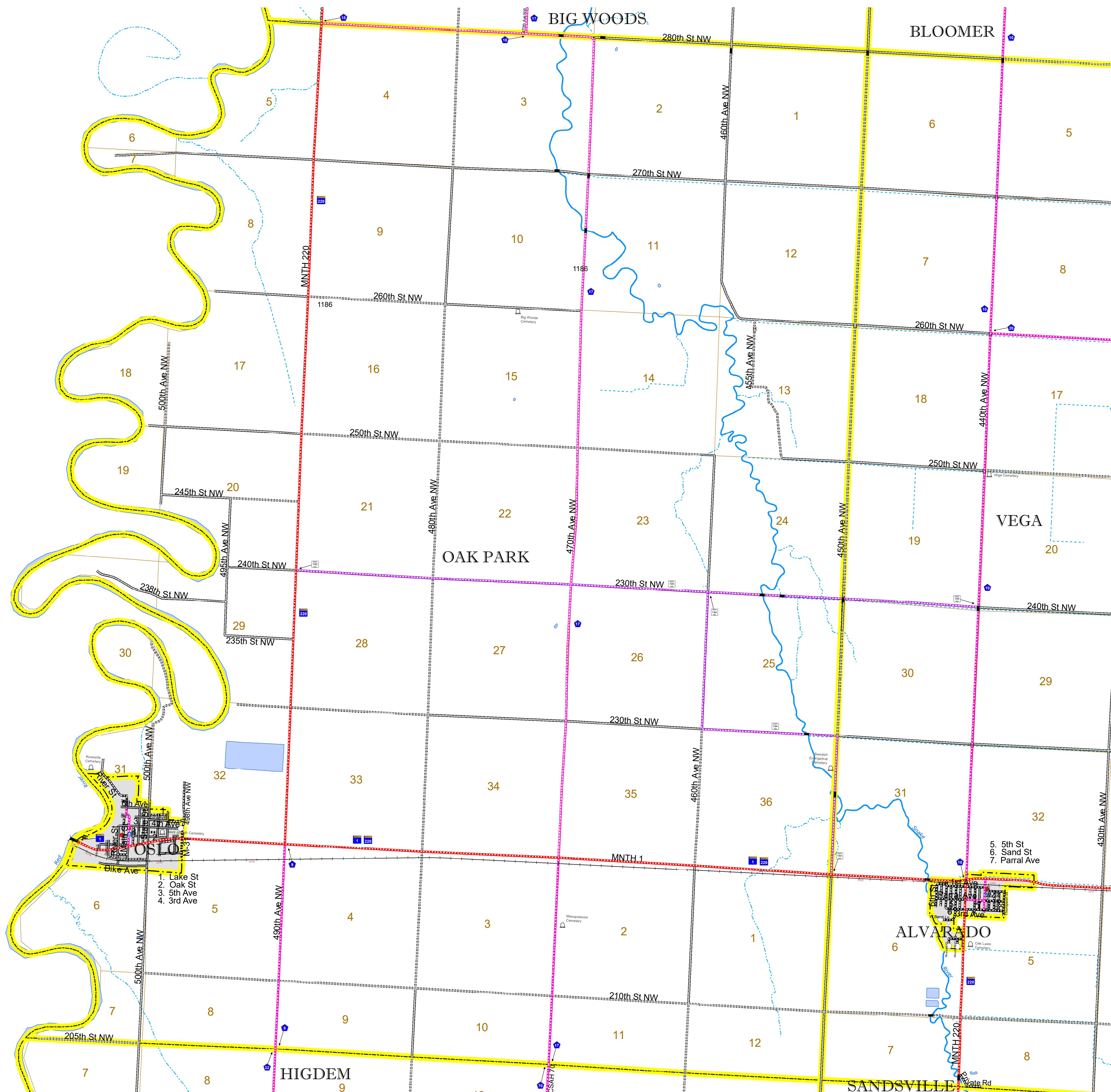
1 in = 2,000 ft

2023

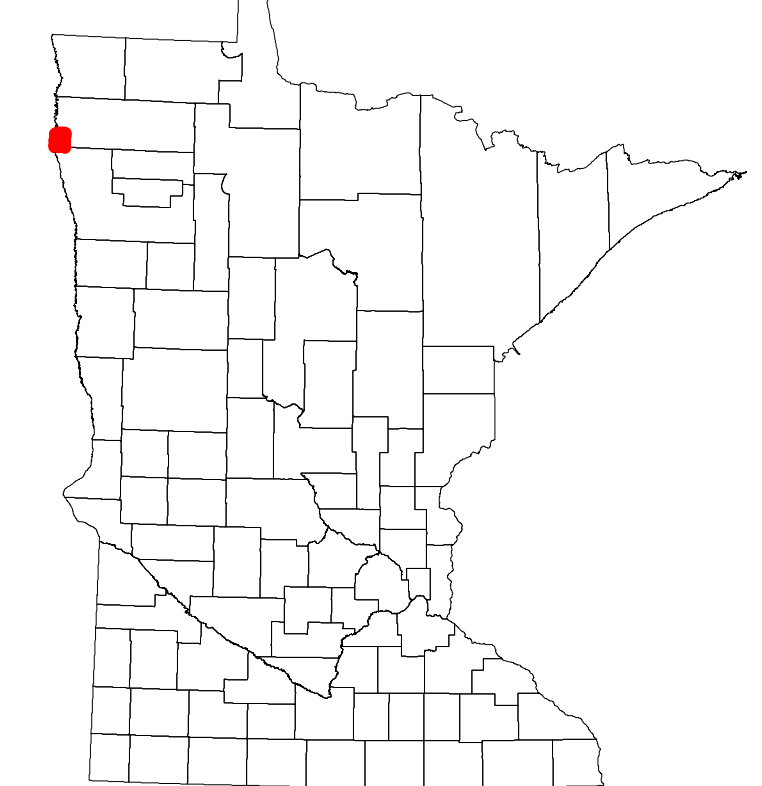
Projection:  
Transverse Mercator  
NAD 1986  
UTM Zone 15



North American Datum  
of 1986



ROAD AND ROADWAY FEATURES		AVIATION FEATURES	
INTERSTATE	CONCRETE	COMMERCIAL AIRPORT	GENERAL AIRPORT
US HIGHWAY	BITUMINOUS	AIRSTRIP	SEAPLANE
MN HIGHWAY	GRAVEL	AIRPORT RUNWAY	BOUNDARY FEATURES
COUNTY STATE AID HIGHWAY	DIRT/UNIMPROVED		TRIBAL LAND
COUNTY ROAD	OTHER		STATE OF MINNESOTA
TOWNSHIP ROAD	UNKNOWN		COUNTY
UNORGANIZED TERRITORY ROAD			MUNICIPALITY
OTHER ROADS			UNORGANIZED TERRITORY
Municipal	RAMP OR CONNECTOR		FEDERAL ADJUSTED URBAN AREA (2014)
Private	INTERSTATE EXIT		CIVIL TOWNSHIP
National Monument	GREAT RIVER ROAD		CONGRESSIONAL TOWNSHIP
National Wildlife			SECTION
State Park			MILITARY
Preserve			VOYAGEURS NATIONAL PARK
			BOUNDARY WATERS CANOE AREA WILDERNESS
			STATE PARK
			REGIONAL PARK
			NATIONAL FOREST
			NATIONAL AND STATE FOREST
			STATE FOREST
			NATIONAL TRAIL
			WILDLIFE REFUGE AREA
			WILDLIFE MANAGEMENT AREA
			HYDROLOGIC FEATURES
			RIVER OR STREAM (PERENNIAL)
			LAKE, POND OR RESERVOIR
			STREAM (INTERMITTENT)
			DRAINAGE DITCH
			WETLAND
			ISLAND OR LAND
			REGIONAL WATERSHED



Population (U.S. Census 2010): 131

To request information from this document in an alternative format, call 651-366-4718 or 1-800-657-3774 (Greater Minnesota); 711 or 1-800-627-3529 (Minnesota Relay). You may also send an e-mail to ADArequest.dot@state.mn.us. (Please request at least one week in advance.)