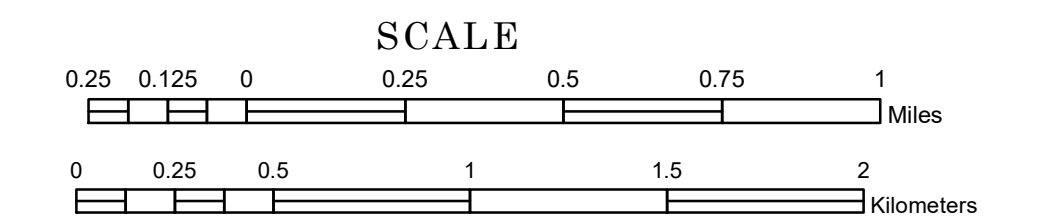


TOWNSHIP OF ELBOW LAKE

PREPARED BY THE
MINNESOTA DEPARTMENT OF TRANSPORTATION
OFFICE OF TRANSPORTATION SYSTEM MANAGEMENT

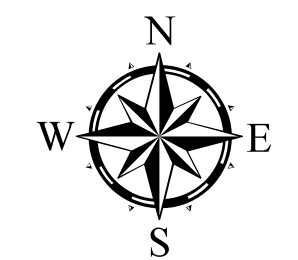
IN COOPERATION WITH
U.S. DEPARTMENT OF TRANSPORTATION
FEDERAL HIGHWAY ADMINISTRATION



1 in = 1,600 ft

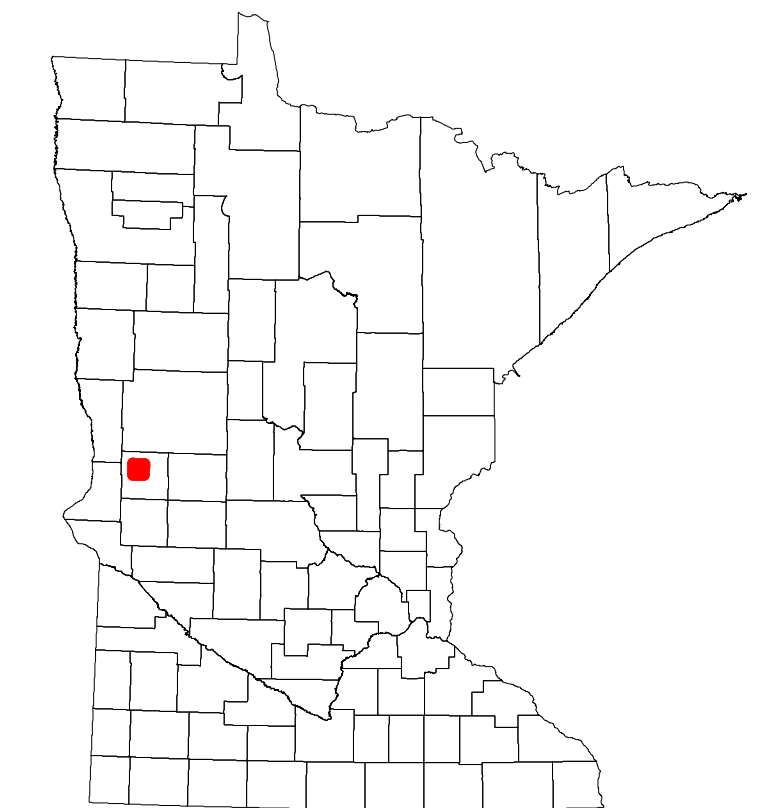
2023

Projection:
Transverse Mercator
NAD 1986
UTM Zone 15

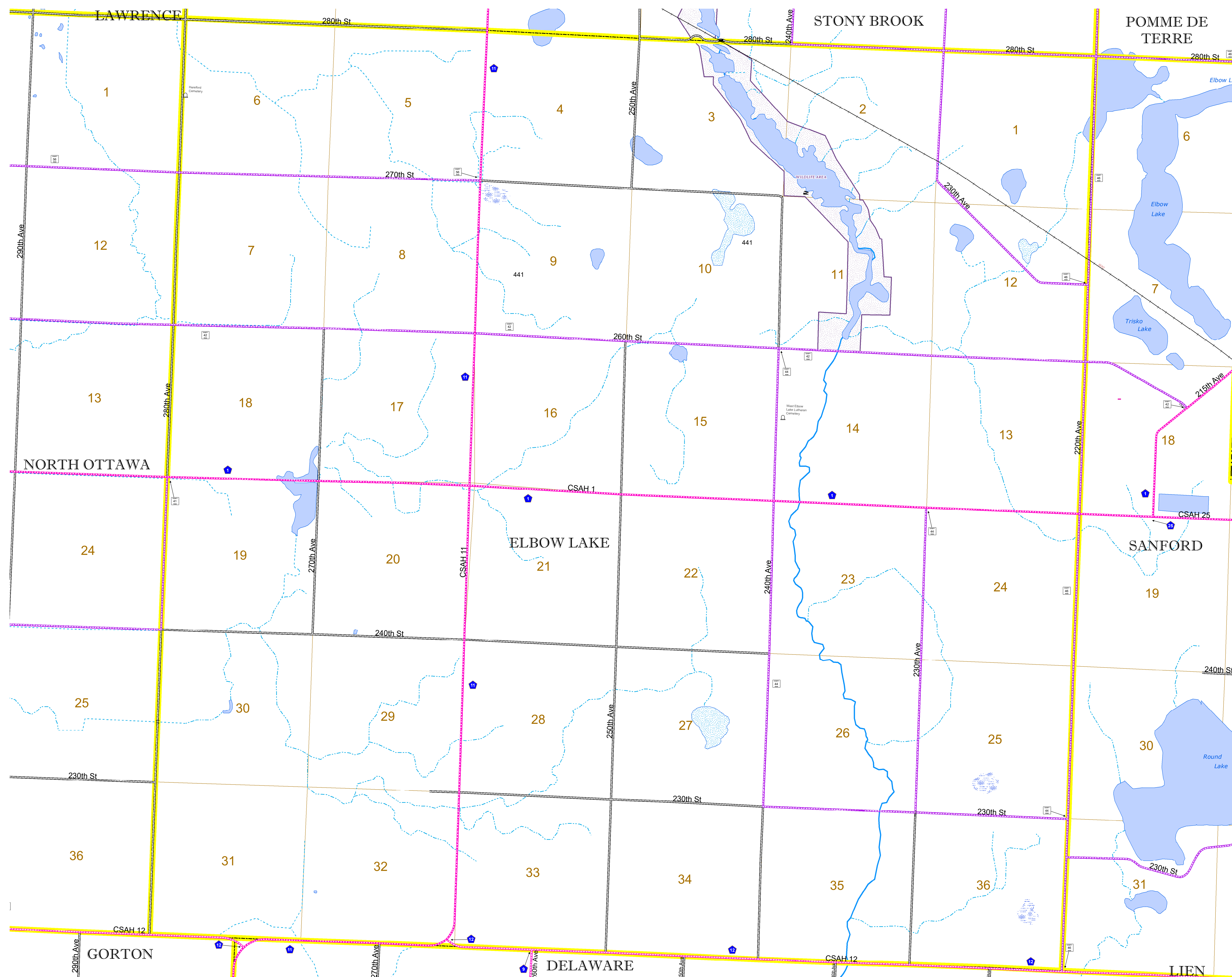


North American Datum
of 1986

ROAD AND ROADWAY FEATURES		AVIATION FEATURES		
INTERSTATE	CONCRETE	COMMERCIAL AIRPORT	GENERAL AIRPORT	
US HIGHWAY	BITUMINOUS	AIRSTRIP	SEAPLANE	
MN HIGHWAY	GRAVEL	AIRPORT RUNWAY		
COUNTY STATE AID HIGHWAY	DIRT/UNIMPROVED			
COUNTY ROAD	OTHER			
TOWNSHIP ROAD	UNKNOWN			
UNORGANIZED TERRITORY ROAD				
OTHER ROADS	RAMP OR CONNECTOR			
Municipal	INTERSTATE EXIT			
Private	GREAT RIVER ROAD			
National Monument				
National Park				
National Wildlife Refuge				
State Park				
State Park Preserve				
RAILROAD AND RAILWAY FEATURES		BOUNDARY FEATURES		
EMPIRE BUILDER STATION (AMTRAK)	TRIBAL LAND	STATE OF MINNESOTA	COUNTY	
NORTHSTAR STATION (COMPUTER)		MUNICIPALITY	UNORGANIZED TERRITORY	
LIGHT RAIL		FEDERAL ADJUSTED URBAN AREA (2014)	CIVIL TOWNSHIP	
BLUE LINE		CONGRESSIONAL TOWNSHIP	SECTION	
GREEN LINE		MILITARY	VOYAGEURS NATIONAL PARK	
INFRASTRUCTURE FEATURES			BOUNDARY WATERS CANOE AREA WILDERNESS	
LONG BRIDGE (200' OR GREATER SPAN)			STATE PARK	
MAJOR BRIDGE (20' TO 200' SPAN)			REGIONAL PARK	
MINOR BRIDGE (5' TO 20' SPAN)			NATIONAL FOREST	
DAM			NATIONAL AND STATE FOREST	
LOCK AND DAM			STATE FOREST	
CITY CENTERS			NATIONAL TRAIL	
STATE CAPITAL			WILDLIFE REFUGUE AREA	
COUNTY SEAT			WILDLIFE MANAGEMENT AREA	
CITY CENTER			HYDROLOGIC FEATURES	
UNINCORPORATED COMMUNITY			RIVER OR STREAM (PERMANENT)	LAKE, POND OR RESERVOIR
PUBLIC SERVICE FEATURES			STREAM (INTERMITTENT)	DRAINAGE DITCH
MNDOT OFFICE				WETLAND
MNDOT TRUCK STATION				ISLAND OR LAND MONUMENT
HIGHWAY PATROL DISTRICT OFFICE				REGIONAL WATERSHED
STATE TRAVEL INFORMATION CENTER				
REST AREA (FULL SERVICE)				
REST AREA (VAULT TOILET)				
WAYSIDE (VAULT OR PIT TOILET)				
PARK AND RIDE LOT				
PORT OF ENTRY				
PUBLIC ACCESS POINT				
MN STATE COLLEGE AND UNIVERSITY SYSTEM (MNSCU)				
UNIVERSITY OF MN SYSTEM				
FAIRGROUNDS				
CULTURAL FEATURES				
STATE HISTORICAL MARKER				
HISTORIC DISTRICT				
HISTORIC SITE				
MONUMENT				



Population (U.S. Census 2010): 141



To request information from this document in an alternative format, call 651-366-4718 or 1-800-657-3774 (Greater Minnesota); 711 or 1-800-627-3529 (Minnesota Relay). You may also send an e-mail to ADAREquest.dot@state.mn.us. (Please request at least one week in advance.)