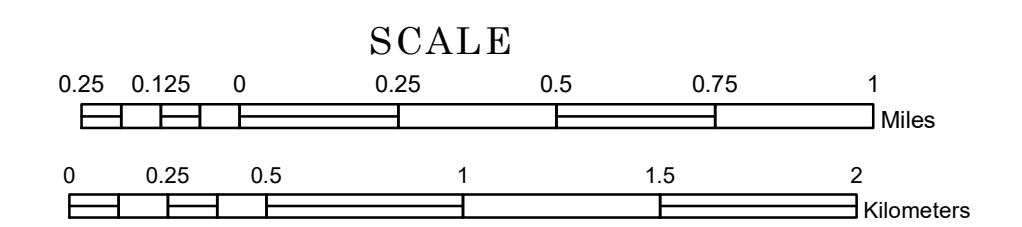


TOWNSHIP OF LEENTHROP

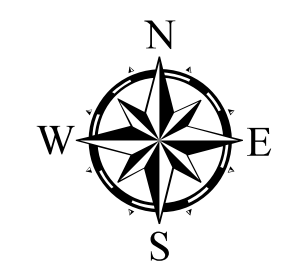
PREPARED BY THE
MINNESOTA DEPARTMENT OF TRANSPORTATION
OFFICE OF TRANSPORTATION SYSTEM MANAGEMENT

IN COOPERATION WITH
U.S. DEPARTMENT OF TRANSPORTATION
FEDERAL HIGHWAY ADMINISTRATION



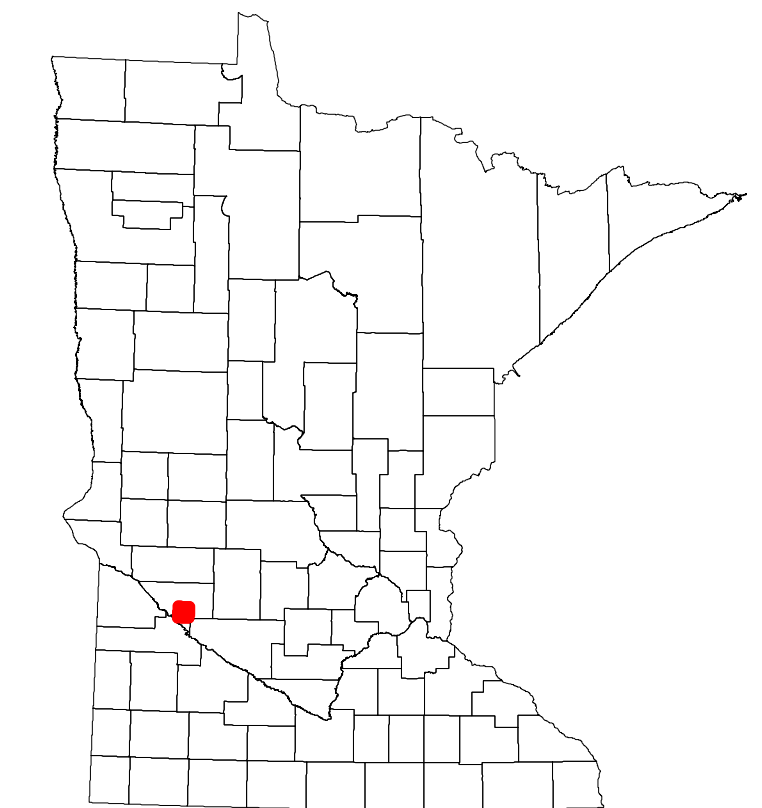
2023

Projection:
Transverse Mercator
NAD 1986
UTM Zone 15

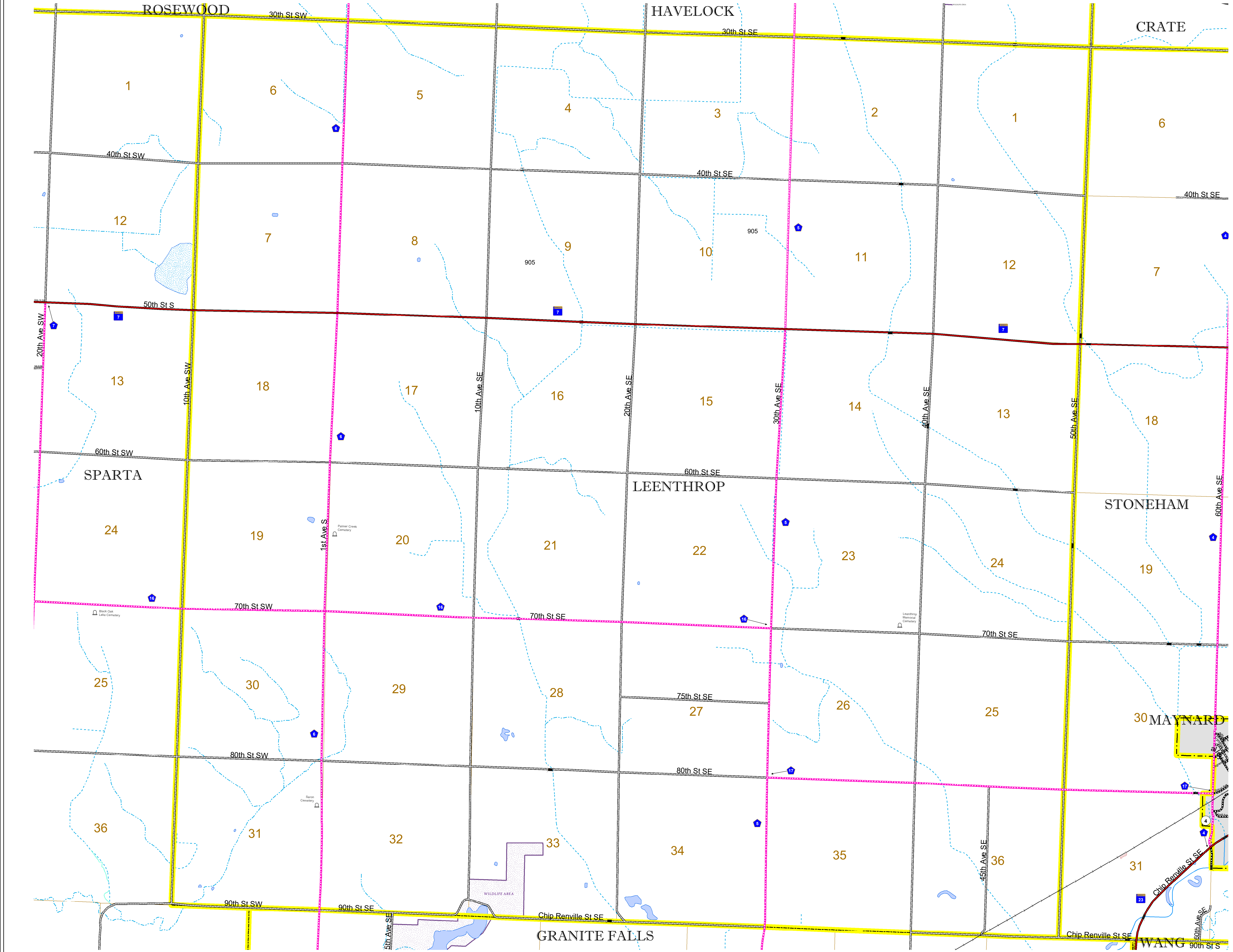


North American Datum
of 1986

ROAD AND ROADWAY FEATURES		AVIATION FEATURES	
INTERSTATE	CONCRETE	COMMERCIAL AIRPORT	GENERAL AIRPORT
US HIGHWAY	BITUMINOUS	AIRSTRIP	AIRSTRIP
MN HIGHWAY	GRAVEL	SEAPLANE	SEAPLANE
COUNTY STATE AID HIGHWAY	DIRT/UNIMPROVED	AIRPORT RUNWAY	AIRPORT RUNWAY
COUNTY ROAD	OTHER		
TOWNSHIP ROAD	UNKNOWN		
UNORGANIZED TERRITORY ROAD			
OTHER ROADS			
Municipal Private National Monument State Forest	RAMP OR CONNECTOR		
Nature Service National Park National Wildlife State Game	INTERSTATE EXIT		
Mulvan National Forest State Park Preserve	GREAT RIVER ROAD		
RAILROAD AND RAILWAY FEATURES		BOUNDARY FEATURES	
EMPIRE BUILDER STATION (AMTRAK)	TRIBAL LAND	STATE OF MINNESOTA	COUNTY
NORTHSTAR STATION (COMMUTER)	STATE OF MINNESOTA	MUNICIPALITY	MUNICIPALITY
LIGHT RAIL	UNINCORPORATED COMMUNITY	UNORGANIZED TERRITORY	FEDERAL ADJUSTED URBAN AREA (2014)
BLUE LINE		CIVIL TOWNSHIP	CIVIL TOWNSHIP
GREEN LINE		CONGRESSIONAL TOWNSHIP	CONGRESSIONAL TOWNSHIP
INFRASTRUCTURE FEATURES			SECTION
LONG BRIDGE (200' or Greater Span)		MILITARY	MILITARY
MAJOR BRIDGE (20' to 200' Span)		VOYAGEURS NATIONAL PARK	VOYAGEURS NATIONAL PARK
MINOR BRIDGE (5' to 20' Span)		BOUNDARY WATERS CANOE AREA WILDERNESS	BOUNDARY WATERS CANOE AREA WILDERNESS
DAM		STATE PARK	STATE PARK
LOCK AND DAM		REGIONAL PARK	REGIONAL PARK
CITY CENTERS			NATIONAL FOREST
STATE CAPITAL			NATIONAL AND STATE FOREST
COUNTY SEAT			STATE FOREST
CITY CENTER			WILDLIFE REFUGE AREA
UNINCORPORATED COMMUNITY			WILDLIFE MANAGEMENT AREA
PUBLIC SERVICE FEATURES			HYDROLOGIC FEATURES
MNDOT OFFICE			RIVER OR STREAM (PERMANENT)
MNDOT TRUCK STATION			LAKE, POND OR RESERVOIR
HIGHWAY PATROL DISTRICT OFFICE			STREAM (INTERMITTENT)
STATE TRAVEL INFORMATION CENTER			DRAINAGE DITCH
REST AREA (Full Service)			WETLAND
REST AREA (Vault Toilet)			ISLAND OR LAND
WAYSIDE (Vault or Pit Toilet)			REGIONAL WATERSHED
PARK AND RIDE LOT			
PORT OF ENTRY			
PUBLIC ACCESS POINT			
MN STATE COLLEGE AND UNIVERSITY SYSTEM (MNSCU)			
UNIVERSITY OF MN SYSTEM			
FAIRGROUNDS			
CULTURAL FEATURES			
STATE HISTORICAL MARKER			
HISTORIC DISTRICT			
HISTORIC SITE			
MONUMENT			



Population (U.S. Census 2010): 243



To request information from this document in an alternative format, call 651-366-4718 or 1-800-657-3774 (Greater Minnesota); 711 or 1-800-627-3529 (Minnesota Relay). You may also send an e-mail to ADArequest.dot@state.mn.us. (Please request at least one week in advance.)