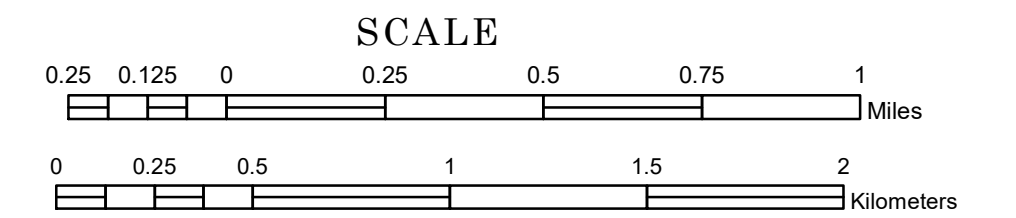


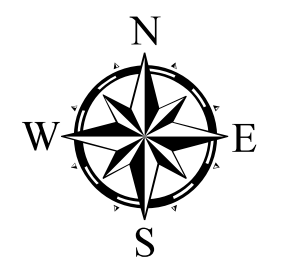
TOWNSHIP OF DAHLGREN

PREPARED BY THE
MINNESOTA DEPARTMENT OF TRANSPORTATION
OFFICE OF TRANSPORTATION SYSTEM MANAGEMENT

IN COOPERATION WITH
U.S. DEPARTMENT OF TRANSPORTATION
FEDERAL HIGHWAY ADMINISTRATION



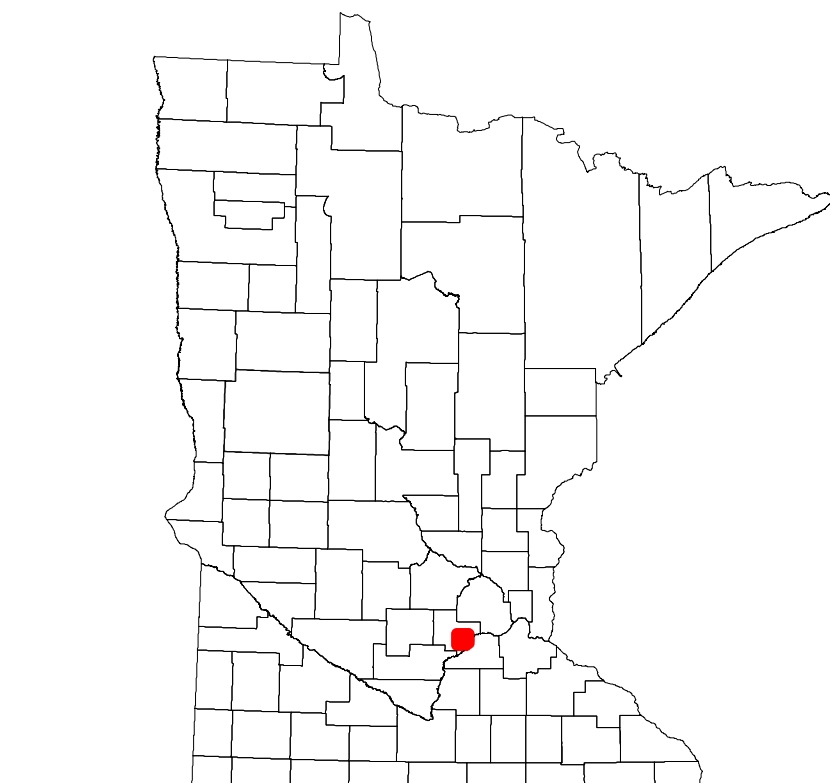
1 in = 1,600 ft
2024



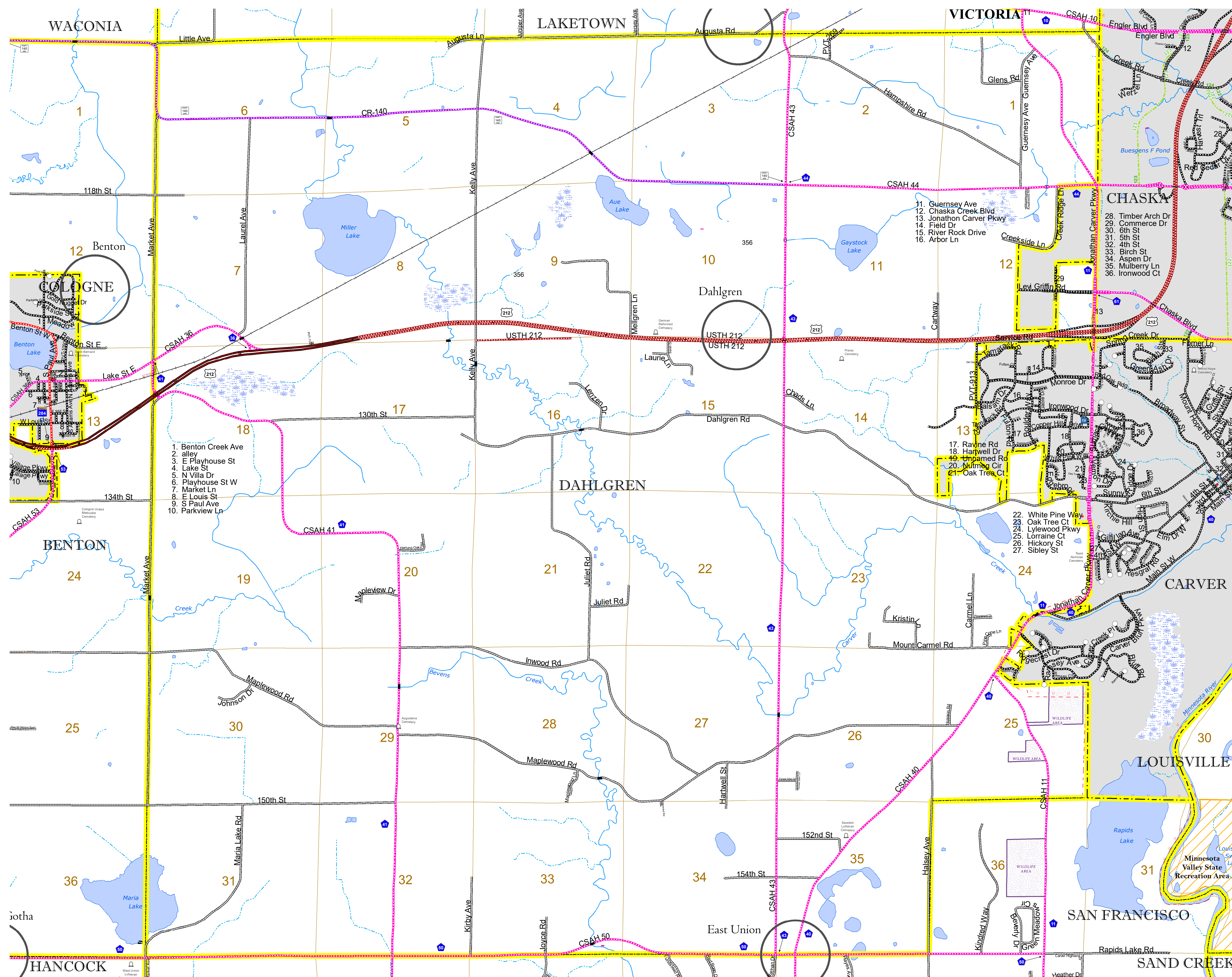
Projection:
Transverse Mercator
NAD 1986
UTM Zone 15

North American Datum
of 1986

ROAD AND ROADWAY FEATURES				
INTERSTATE	CONCRETE			
US HIGHWAY	BITUMINOUS			
MN HIGHWAY	GRAVEL			
COUNTY STATE AID HIGHWAY	DIRT/UNIMPROVED			
COUNTY ROAD	OTHER			
TOWNSHIP ROAD	UNKNOWN			
UNORGANIZED TERRITORY ROAD				
OTHER ROADS	RAMP OR CONNECTOR			
Municipal	Private	National Monument	State Forest	Other
Nature Service	National Park	National Wildlife	State Game	
Miscellaneous	National Forest	State Park	Present	
RAILROAD AND RAILWAY FEATURES		AVIATION FEATURES		
EMPIRE BUILDER STATION (AMTRAK)	GENERAL AIRPORT	COMMERCIAL AIRPORT		
NORTHSTAR STATION (COMMITTEE)	AIRSTRIP			
LIGHT RAIL	SEAPLANE			
BLUE LINE	AIRPORT RUNWAY			
GREEN LINE				
INFRASTRUCTURE FEATURES		BOUNDARY FEATURES		
LONG BRIDGE (200' OR GREATER SPAN)	STATE OF MINNESOTA	TRIBAL LAND		
MAJOR BRIDGE (50' TO 200' SPAN)	COUNTY			
MINOR BRIDGE (5' TO 50' SPAN)	MUNICIPALITY			
DAM	UNORGANIZED TERRITORY			
LOCK AND DAM	FEDERAL ADJUSTED URBAN AREA (2014)			
	CIVIL TOWNSHIP			
	CONGRESSIONAL TOWNSHIP			
STATE CAPITAL	COUNTY SEAT	CITY CENTER	UNINCORPORATED COMMUNITY	
PUBLIC SERVICE FEATURES		SECTION		
MNDOT OFFICE	MILITARY			
MNDOT TRUCK STATION	VOYAGEURS NATIONAL PARK			
HIGHWAY PATROL DISTRICT OFFICE	BOUNDARY WATERS GANOE AREA WILDERNESS			
STATE TRAVEL INFORMATION CENTER	STATE PARK			
REST AREA (FULL SERVICE)	REGIONAL PARK			
REST AREA (VAULT TOILET)	NATIONAL FOREST			
WAYSIDE (VAULT OR PVI TOILET)	NATIONAL AND STATE FOREST			
PARK AND RIDE LOT	STATE FOREST			
PORT OF ENTRY	NATIONAL TRAIL			
PUBLIC ACCESS POINT	WILDLIFE REFUGE AREA			
MN STATE COLLEGE AND UNIVERSITY SYSTEM (MNSCU)	WILDLIFE MANAGEMENT AREA			
UNIVERSITY OF MN SYSTEM	HYDROLOGIC FEATURES			
FAIRGROUNDS	RIVER OR STREAM (PERMANENT)			
	LAKE, POND OR RESERVOIR			
	STREAM (INTERMITTENT)			
STATE HISTORICAL MARKER	DRAINAGE DITCH			
HISTORIC DISTRICT	WETLAND			
HISTORIC SITE	ISLAND OR LAND			
MONUMENT	REGIONAL WATERSHED			



Population (U.S. Census 2010): 1331



To request information from this document in an alternative format, call 651-366-4718 or 1-800-657-3774 (Greater Minnesota); 711 or 1-800-627-3529 (Minnesota Relay). You may also send an e-mail to ADARquest.dot@state.mn.us. (Please request at least one week in advance.)