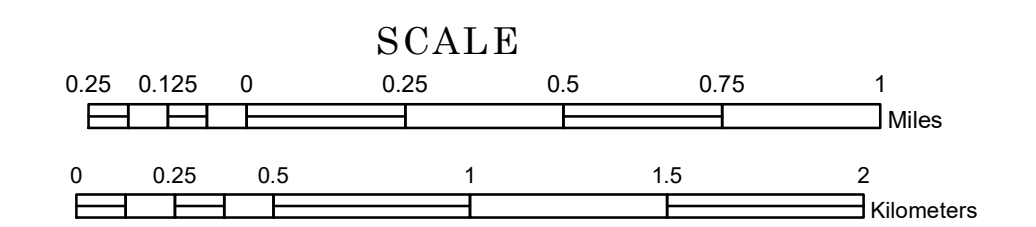


TOWNSHIP OF MOONSHINE

PREPARED BY THE
MINNESOTA DEPARTMENT OF TRANSPORTATION
OFFICE OF TRANSPORTATION SYSTEM MANAGEMENT

IN COOPERATION WITH
U.S. DEPARTMENT OF TRANSPORTATION
FEDERAL HIGHWAY ADMINISTRATION



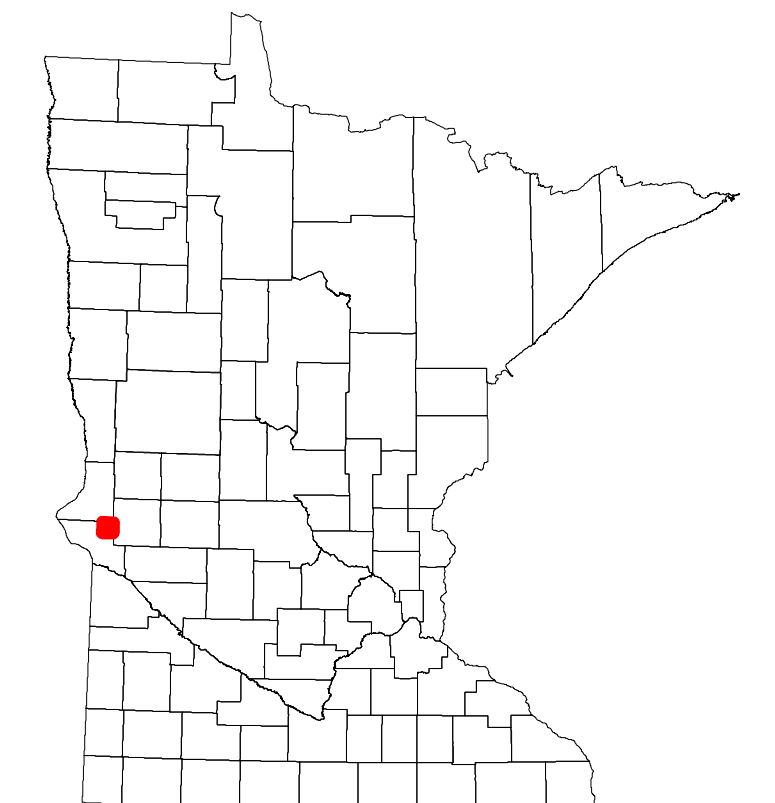
1 in = 1,600 ft
2024

Projection:
Transverse Mercator
NAD 1986
UTM Zone 15

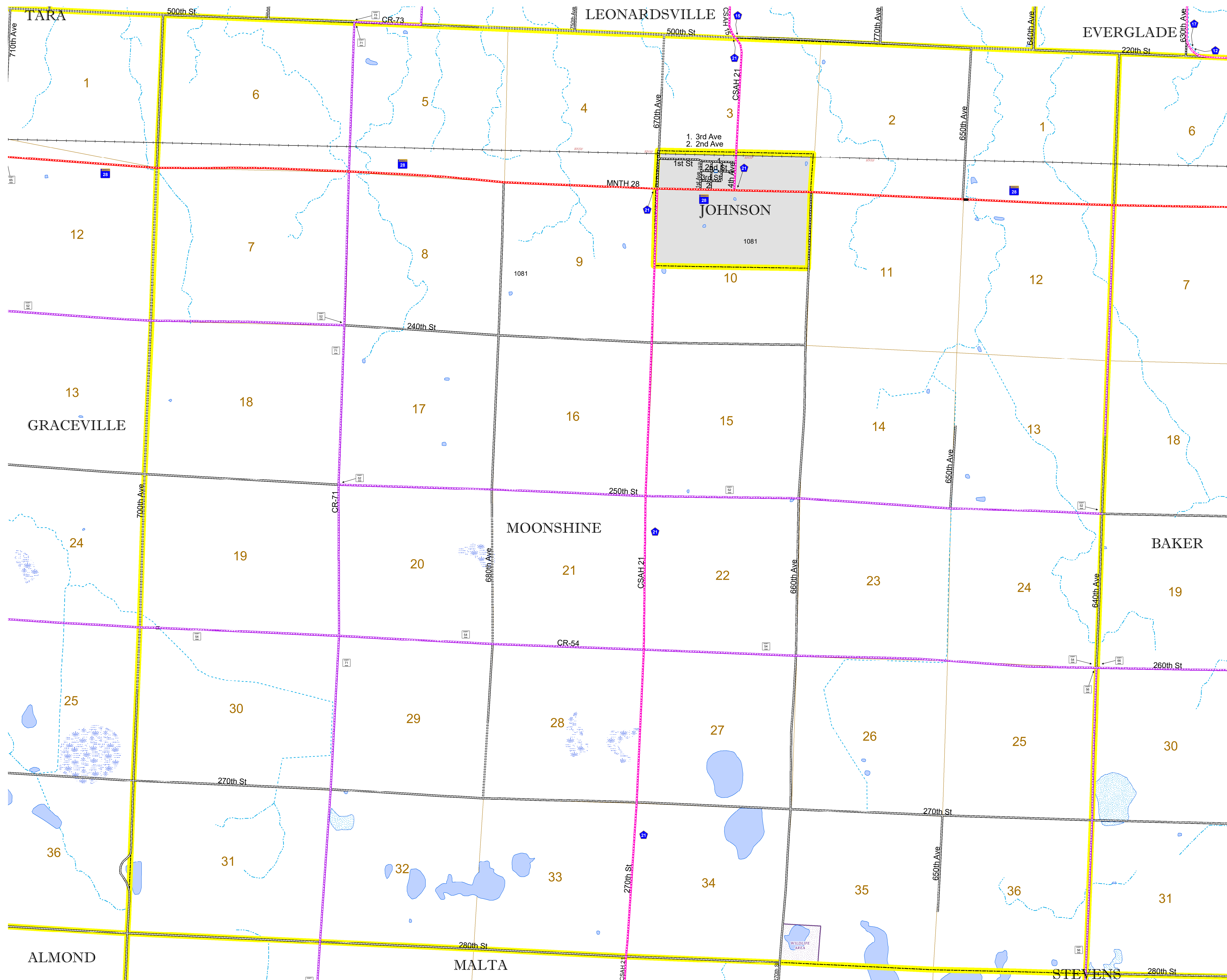


North American Datum
of 1986

ROAD AND ROADWAY FEATURES		RAILROAD AND RAILWAY FEATURES		AVIATION FEATURES		BOUNDARY FEATURES	
INTERSTATE		EMPIRE BUILDER STATION (AMTRAK)		COMMERCIAL AIRPORT		TRIBAL LAND	
US HIGHWAY		NORTHSTAR STATION (COMMUTER)		GENERAL AIRPORT		STATE OF MINNESOTA	
MN HIGHWAY		LIGHT RAIL		AIRSTRIP		COUNTY	
COUNTY STATE AID HIGHWAY		BLUE LINE		SEAPLANE		MUNICIPALITY	
COUNTY ROAD		GREEN LINE		AIRPORT RUNWAY		UNORGANIZED TERRITORY	
TOWNSHIP ROAD		INFRASTRUCTURE FEATURES		LOCK AND DAM		FEDERAL ADJUSTED URBAN AREA (2014)	
UNORGANIZED TERRITORY ROAD		LONG BRIDGE (200' OR GREATER SPAN)		CITY CENTERS		CIVIL TOWNSHIP	
OTHER ROADS		MAJOR BRIDGE (20' TO 200' SPAN)		STATE CAPITAL		CONGRESSIONAL TOWNSHIP	
MUNICIPAL		MINOR BRIDGE (5' TO 20' SPAN)		COUNTY SEAT		SECTION	
PRIVATE		DAM		CITY CENTER		MILITARY	
NATIONAL MONUMENT		LOCK AND DAM		UNINCORPORATED COMMUNITY		VOYAGEURS NATIONAL PARK	
STATE FOREST		STATE CAPITAL		PUBLIC SERVICE FEATURES		BOUNDARY WATERS CANOE AREA WILDERNESS	
STATE PARK		MNDOT OFFICE		MNDOT TRUCK STATION		STATE PARK	
NATIONAL FOREST		HIGHWAY PATROL DISTRICT OFFICE		STATE TRAVEL INFORMATION CENTER		REGIONAL PARK	
NATIONAL AND STATE FOREST		REST AREA (FULL SERVICE)		REST AREA (VAULT TOILET)		NATIONAL FOREST	
STATE FOREST		REST AREA (VAULT TOILET)		WAYSIDE (VAULT OR PIT TOILET)		NATIONAL AND STATE FOREST	
WILDLIFE REFUGUE AREA		PARK AND RIDE LOT		PORT OF ENTRY		STATE FOREST	
WILDLIFE MANAGEMENT AREA		PUBLIC ACCESS POINT		PUBLIC ACCESS POINT		WILDLIFE REFUGUE AREA	
HYDROLOGIC FEATURES		MN STATE COLLEGE AND UNIVERSITY SYSTEM (MNSCU)		MN STATE COLLEGE AND UNIVERSITY SYSTEM (MNSCU)		WILDLIFE MANAGEMENT AREA	
RIVER OR STREAM (PERMANENT)		UNIVERSITY OF MN SYSTEM		UNIVERSITY OF MN SYSTEM		HYDROLOGIC FEATURES	
LAKE, POND OR RESERVOIR		FAIRGROUNDS		FAIRGROUNDS		RIVER OR STREAM (PERMANENT)	
STREAM (INTERMITTENT)		CULTURAL FEATURES		CULTURAL FEATURES		LAKE, POND OR RESERVOIR	
DRAINAGE DITCH		STATE HISTORICAL MARKER		STATE HISTORICAL MARKER		STREAM (INTERMITTENT)	
WETLAND		HISTORIC DISTRICT		HISTORIC DISTRICT		DRAINAGE DITCH	
ISLAND OR LAND MONUMENT		HISTORIC SITE		HISTORIC SITE		WETLAND	
REGIONAL WATERSHED		MONUMENT		MONUMENT		ISLAND OR LAND MONUMENT	



Population (U.S. Census 2010): 131



To request information from this document in an alternative format, call 651-366-4718 or 1-800-657-3774 (Greater Minnesota); 711 or 1-800-627-3529 (Minnesota Relay). You may also send an e-mail to ADarequest.dot@state.mn.us. (Please request at least one week in advance.)