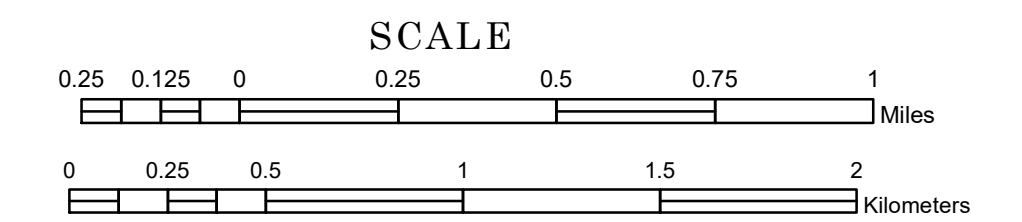


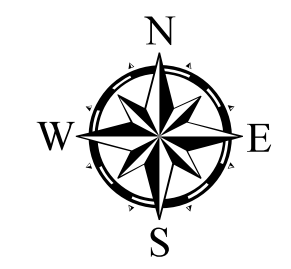
# TOWNSHIP OF GRANITE LEDGE

PREPARED BY THE  
MINNESOTA DEPARTMENT OF TRANSPORTATION  
OFFICE OF TRANSPORTATION SYSTEM MANAGEMENT

IN COOPERATION WITH  
U.S. DEPARTMENT OF TRANSPORTATION  
FEDERAL HIGHWAY ADMINISTRATION



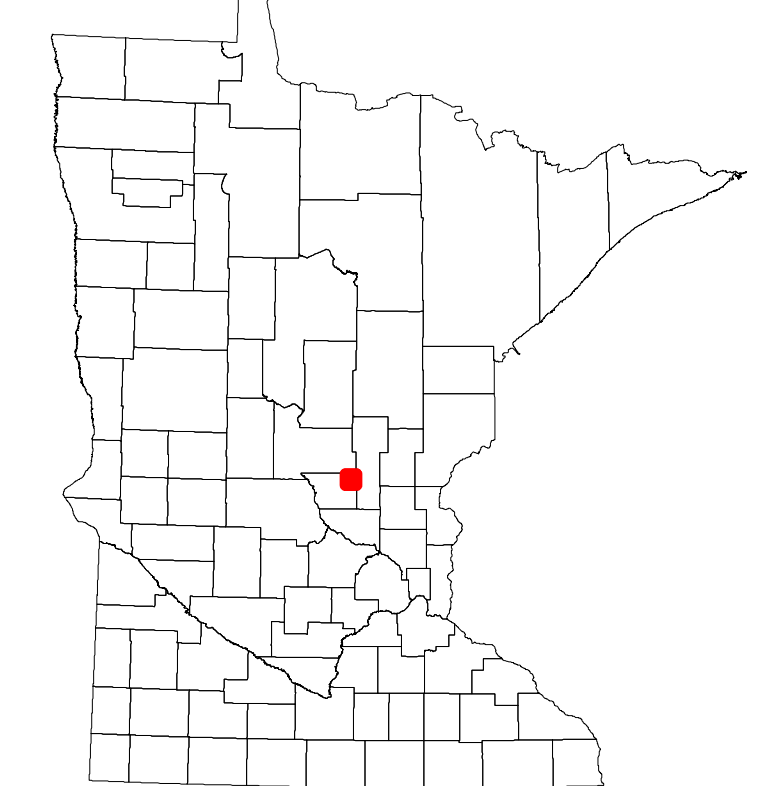
1 in = 1,600 ft  
**2023**



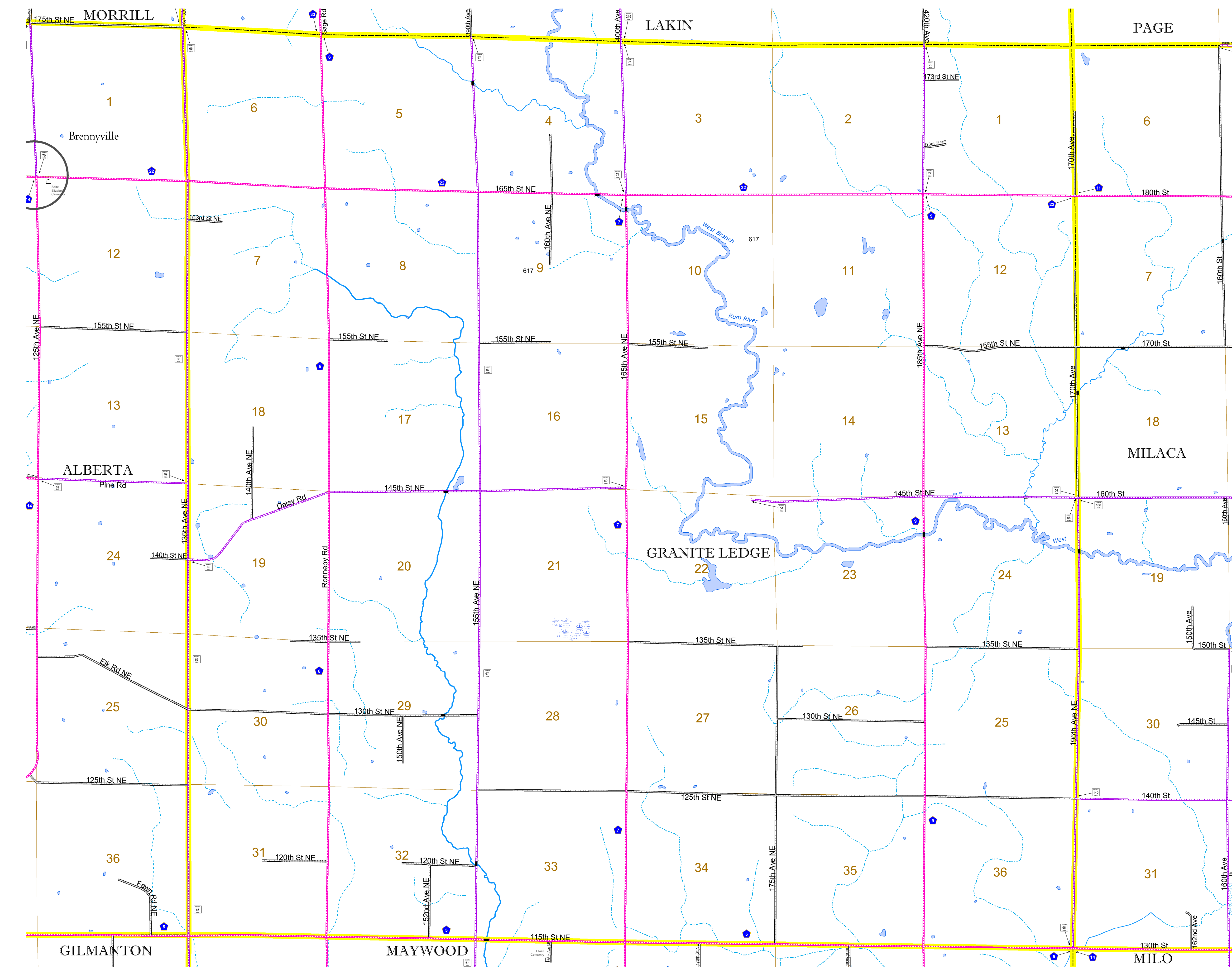
Projection:  
Transverse Mercator  
NAD 1986  
UTM Zone 15

North American Datum  
of 1986

ROAD AND ROADWAY FEATURES		BOUNDARY FEATURES	
INTERSTATE		CONCRETE	
US HIGHWAY		BITUMINOUS	
MN HIGHWAY		GRAVEL	
COUNTY STATE AID HIGHWAY		DIRT/UNIMPROVED	
COUNTY ROAD		OTHER	
TOWNSHIP ROAD		UNKNOWN	
UNORGANIZED TERRITORY ROAD			
OTHER ROADS		RAMP OR CONNECTOR	
MUNICIPAL		INTERSTATE EXIT	
PRIVATE		AVIATION FEATURES	
NATIONAL MONUMENT		COMMERCIAL AIRPORT	
NATIONAL SERVICE		GENERAL AIRPORT	
NATIONAL PARK		AIRSTRIP	
NATIONAL WILDLIFE		SEAPLANE	
STATE GAME		AIRPORT RUNWAY	
MILITARY			
		GREAT RIVER ROAD	
		RAILROAD AND RAILWAY FEATURES	
		EMPIRE BUILDER STATION (AMTRAK)	
		NORTHSTAR STATION (COMMUTER)	
		LIGHT RAIL	
		BLUE LINE	
		GREEN LINE	
		INFRASTRUCTURE FEATURES	
		LONG BRIDGE (200' OR GREATER SPAN)	
		MAJOR BRIDGE (20' TO 200' SPAN)	
		MINOR BRIDGE (5' TO 20' SPAN)	
		DAM	
		LOCK-AND-DAM	
		CITY CENTERS	
		STATE CAPITAL	
		COUNTY SEAT	
		CITY CENTER	
		UNINCORPORATED COMMUNITY	
		PUBLIC SERVICE FEATURES	
		MNDOT OFFICE	
		MNDOT TRUCK STATION	
		HIGHWAY PATROL DISTRICT OFFICE	
		STATE TRAVEL INFORMATION CENTER	
		REST AREA (FULL SERVICE)	
		REST AREA (VAULT TOILET)	
		WAYSIDE (VAULT OR PIT TOILET)	
		PARK AND RIDE LOT	
		PORT OF ENTRY	
		PUBLIC ACCESS POINT	
		MN STATE COLLEGE AND UNIVERSITY SYSTEM (MNSCU)	
		UNIVERSITY OF MN SYSTEM	
		FAIRGROUNDS	
		CULTURAL FEATURES	
		STATE HISTORICAL MARKER	
		HISTORIC DISTRICT	
		HISTORIC SITE	
		MONUMENT	
		HYDROLOGIC FEATURES	
		RIVER OR STREAM (PERENNIAL)	
		LAKE, POND OR RESERVOIR	
		STREAM (INTERMITTENT)	
		DRAINAGE DITCH	
		WETLAND	
		ISLAND OR LAND	
		REGIONAL WATERSHED	



Population (U.S. Census 2010): 743



To request information from this document in an alternative format, call 651-366-4718 or 1-800-657-3774 (Greater Minnesota); 711 or 1-800-627-3529 (Minnesota Relay). You may also send an e-mail to ADRequest.dot@state.mn.us. (Please request at least one week in advance.)