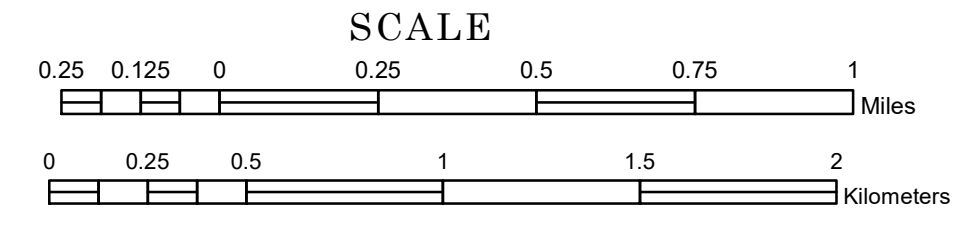


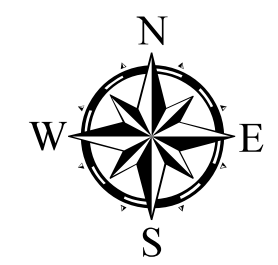
TOWNSHIP OF LAKE VIEW

PREPARED BY THE
MINNESOTA DEPARTMENT OF TRANSPORTATION
OFFICE OF TRANSPORTATION SYSTEM MANAGEMENT

IN COOPERATION WITH
U.S. DEPARTMENT OF TRANSPORTATION
FEDERAL HIGHWAY ADMINISTRATION



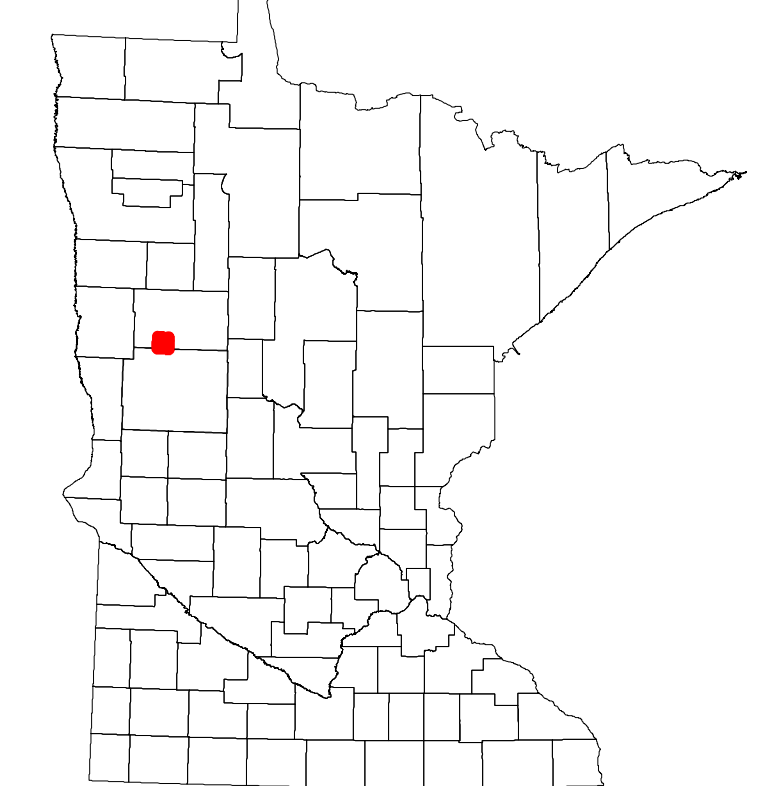
1 in = 1,600 ft
2024



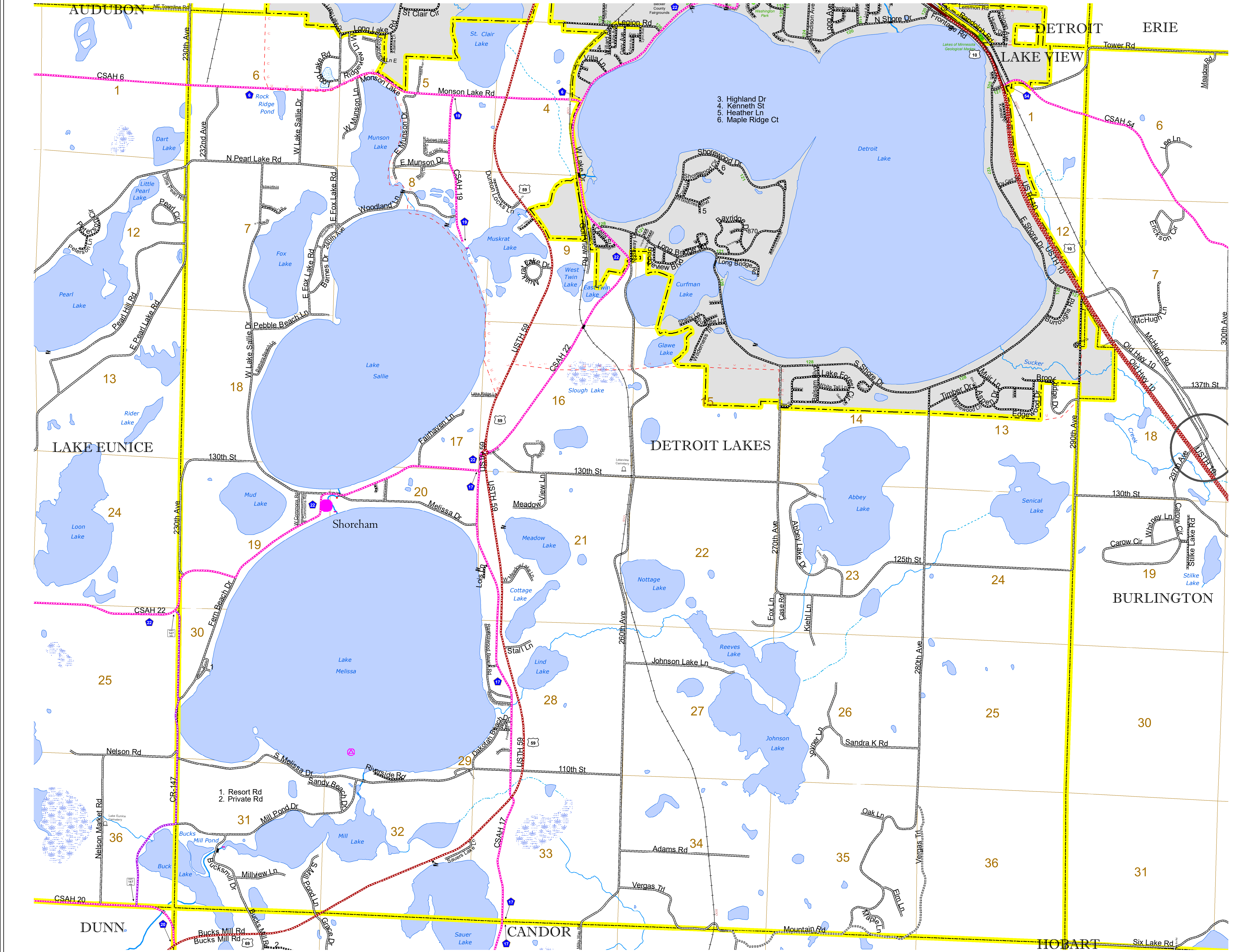
Projection:
Transverse Mercator
NAD 1986
UTM Zone 15

North American Datum
of 1986

ROAD AND ROADWAY FEATURES		RAILROAD AND RAILWAY FEATURES		AVIATION FEATURES	
INTERSTATE		CONCRETE		COMMERCIAL AIRPORT	
US HIGHWAY		BITUMINOUS		GENERAL AIRPORT	
MN HIGHWAY		GRAVEL		AIRSTRIP	
COUNTY STATE AID HIGHWAY		DIRT/UNIMPROVED		SEAPLANE	
COUNTY ROAD		OTHER		AIRPORT RUNWAY	
TOWNSHIP ROAD		UNKNOWN			
UNORGANIZED TERRITORY ROAD					
OTHER ROADS		RAMP OR CONNECTOR		TRIBAL LAND	
Municipal		INTERSTATE EXIT		STATE OF MINNESOTA	
Private				COUNTY	
National Monument				MUNICIPALITY	
National Park				UNORGANIZED TERRITORY	
National Wildlife Refuge				FEDERAL ADJUSTED URBAN AREA (2014)	
State Game Preserve				CIVIL TOWNSHIP	
Present				CONGRESSIONAL TOWNSHIP	
				SECTION	
				MILITARY	
				VOYAGEURS NATIONAL PARK	
				BOUNDARY WATERS GANOE AREA WILDERNESS	
				STATE PARK	
				REGIONAL PARK	
				NATIONAL FOREST	
				NATIONAL AND STATE FOREST	
				STATE FOREST	
				NATIONAL TRAIL	
				WILDLIFE REFUGUE AREA	
				WILDLIFE MANAGEMENT AREA	
				HYDROLOGIC FEATURES	
				RIVER OR STREAM (PERENNIAL)	
				LAKE, POND OR RESERVOIR	
				STREAM (INTERMITTENT)	
				DRAINAGE DITCH	
				WETLAND	
				ISLAND OR LAND	
				REGIONAL WATERSHED	



Population (U.S. Census 2010): 1685



To request information from this document in an alternative format, call 651-366-4718 or 1-800-657-3774 (Greater Minnesota); 711 or 1-800-627-3529 (Minnesota Relay). You may also send an e-mail to ADARquest.dot@state.mn.us. (Please request at least one week in advance.)