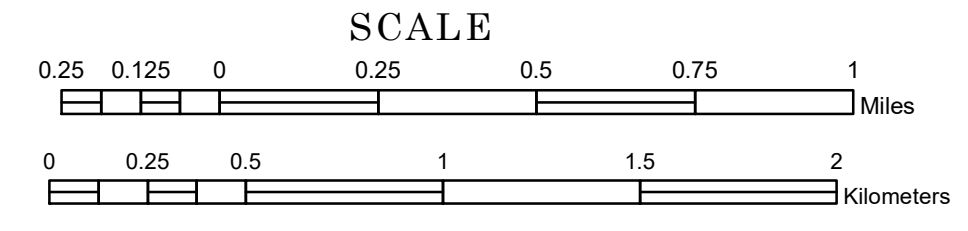


# TOWNSHIP OF ATLANTA

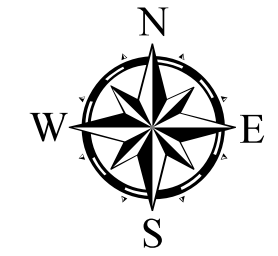
PREPARED BY THE  
MINNESOTA DEPARTMENT OF TRANSPORTATION  
OFFICE OF TRANSPORTATION SYSTEM MANAGEMENT

IN COOPERATION WITH  
U.S. DEPARTMENT OF TRANSPORTATION  
FEDERAL HIGHWAY ADMINISTRATION

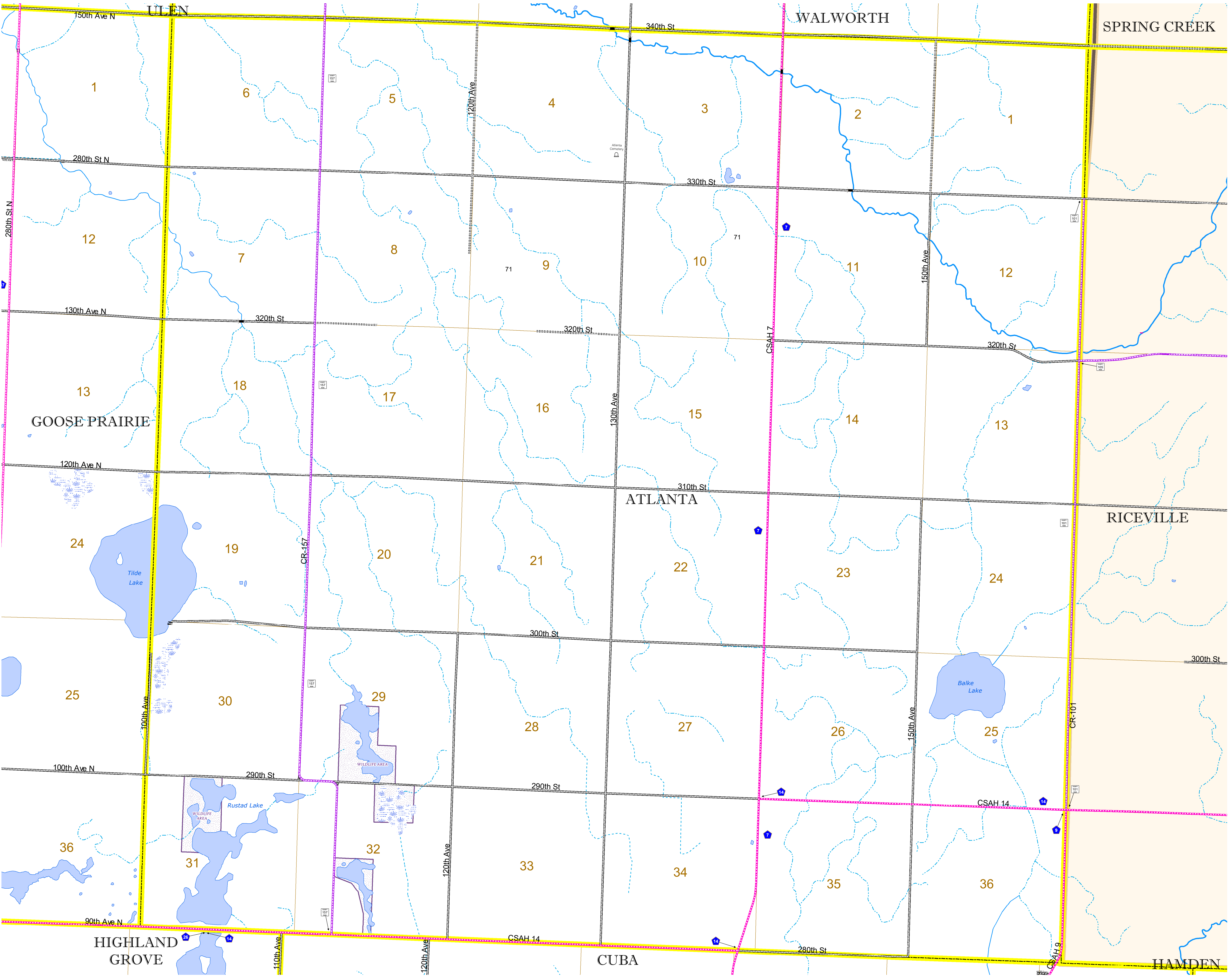


1 in = 1,600 ft  
**2024**

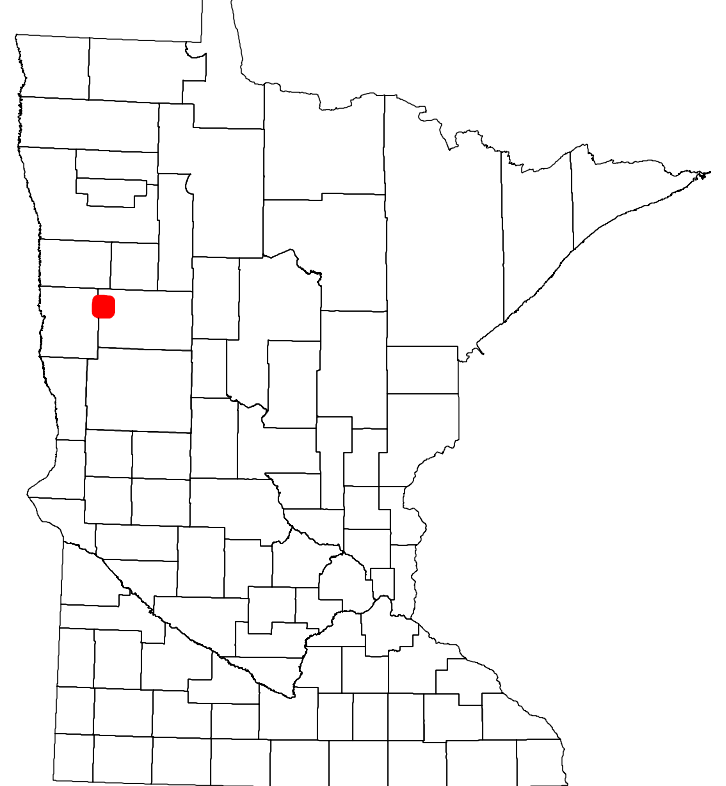
Projection:  
Transverse Mercator  
NAD 1986  
UTM Zone 15



North American Datum  
of 1986



ROAD AND ROADWAY FEATURES		AVIATION FEATURES	
INTERSTATE	CONCRETE	COMMERCIAL AIRPORT	GENERAL AIRPORT
US HIGHWAY	BITUMINOUS	AIRSTRIP	SEAPLANE
MN HIGHWAY	GRAVEL	AIRPORT RUNWAY	
COUNTY STATE AID HIGHWAY	DIRT/UNIMPROVED		
COUNTY ROAD	OTHER		
TOWNSHIP ROAD	UNKNOWN		
UNORGANIZED TERRITORY ROAD			
OTHER ROADS			
Municipal	RAMP OR CONNECTOR		
Private	INTERSTATE EXIT		
National Monument	GREAT RIVER ROAD		
National Park			
National Wildlife Refuge			
State Game			
State Park			
Preserve			
RAILROAD AND RAILWAY FEATURES		BOUNDARY FEATURES	
EMPIRE BUILDER STATION (AMTRAK)	TRIBAL LAND	STATE OF MINNESOTA	COUNTY
NORTHSTAR STATION (COMPUTER)	STATE OF MINNESOTA	MUNICIPALITY	MUNICIPALITY
LIGHT RAIL		UNORGANIZED TERRITORY	FEDERAL ADJUSTED URBAN AREA (2014)
BLUE LINE		CIVIL TOWNSHIP	CONGRESSIONAL TOWNSHIP
GREEN LINE			
INFRASTRUCTURE FEATURES		CITY CENTERS	
LONG BRIDGE (200' OR GREATER SPAN)	STATE CAPITAL	COUNTY SEAT	CITY CENTER
MAJOR BRIDGE (20' TO 200' SPAN)			
MINOR BRIDGE (5' TO 20' SPAN)			
DAM			
LOCK AND DAM			
PUBLIC SERVICE FEATURES		HYDROLOGIC FEATURES	
MN DOT OFFICE	WILDLIFE REFUGE AREA	WILDLIFE REFUGE AREA	WILDLIFE MANAGEMENT AREA
MN DOT TRUCK STATION	NATIONAL FOREST	NATIONAL FOREST	NATIONAL AND STATE FOREST
HIGHWAY PATROL DISTRICT OFFICE	STATE FOREST	STATE FOREST	NATIONAL TRAIL
STATE TRAVEL INFORMATION CENTER	WILDLIFE REFUGE AREA	WILDLIFE REFUGE AREA	WILDLIFE MANAGEMENT AREA
REST AREA (FULL SERVICE)	WILDLIFE REFUGE AREA	WILDLIFE REFUGE AREA	WILDLIFE MANAGEMENT AREA
REST AREA (VAULT TOILET)	WILDLIFE REFUGE AREA	WILDLIFE REFUGE AREA	WILDLIFE MANAGEMENT AREA
WAYSIDE (VAULT OR PIT TOILET)	WILDLIFE REFUGE AREA	WILDLIFE REFUGE AREA	WILDLIFE MANAGEMENT AREA
PARK AND RIDE LOT	WILDLIFE REFUGE AREA	WILDLIFE REFUGE AREA	WILDLIFE MANAGEMENT AREA
PORT OF ENTRY	WILDLIFE REFUGE AREA	WILDLIFE REFUGE AREA	WILDLIFE MANAGEMENT AREA
PUBLIC ACCESS POINT	WILDLIFE REFUGE AREA	WILDLIFE REFUGE AREA	WILDLIFE MANAGEMENT AREA
MN STATE COLLEGE AND UNIVERSITY SYSTEM (MNSCU)	WILDLIFE REFUGE AREA	WILDLIFE REFUGE AREA	WILDLIFE MANAGEMENT AREA
UNIVERSITY OF MN SYSTEM	WILDLIFE REFUGE AREA	WILDLIFE REFUGE AREA	WILDLIFE MANAGEMENT AREA
FAIRGROUNDS	WILDLIFE REFUGE AREA	WILDLIFE REFUGE AREA	WILDLIFE MANAGEMENT AREA
	WILDLIFE REFUGE AREA	WILDLIFE REFUGE AREA	WILDLIFE MANAGEMENT AREA
CULTURAL FEATURES		HYDROLOGIC FEATURES	
STATE HISTORICAL MARKER	WILDLIFE REFUGE AREA	WILDLIFE REFUGE AREA	WILDLIFE MANAGEMENT AREA
HISTORIC DISTRICT	WILDLIFE REFUGE AREA	WILDLIFE REFUGE AREA	WILDLIFE MANAGEMENT AREA
HISTORIC SITE	WILDLIFE REFUGE AREA	WILDLIFE REFUGE AREA	WILDLIFE MANAGEMENT AREA
MONUMENT	WILDLIFE REFUGE AREA	WILDLIFE REFUGE AREA	WILDLIFE MANAGEMENT AREA
	WILDLIFE REFUGE AREA	WILDLIFE REFUGE AREA	WILDLIFE MANAGEMENT AREA



Population (U.S. Census 2010): 119

To request information from this document in an alternative format, call 651-366-4718 or 1-800-657-3774 (Greater Minnesota); 711 or 1-800-627-3529 (Minnesota Relay). You may also send an e-mail to ADArequest.dot@state.mn.us. (Please request at least one week in advance.)