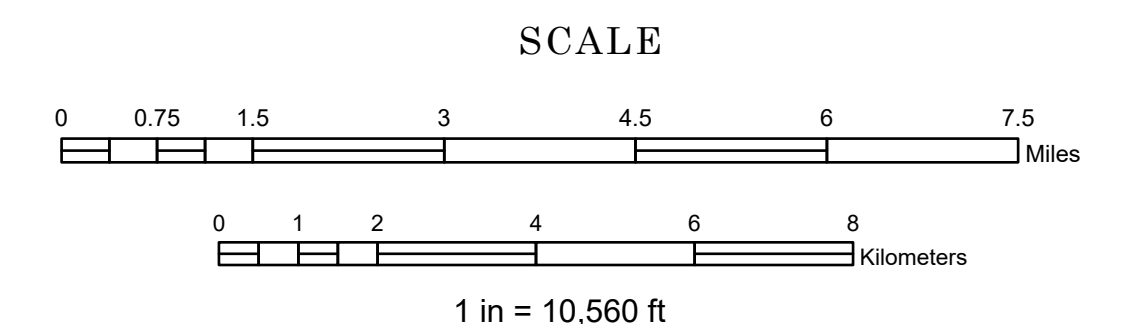


S O U T H D A K O T A

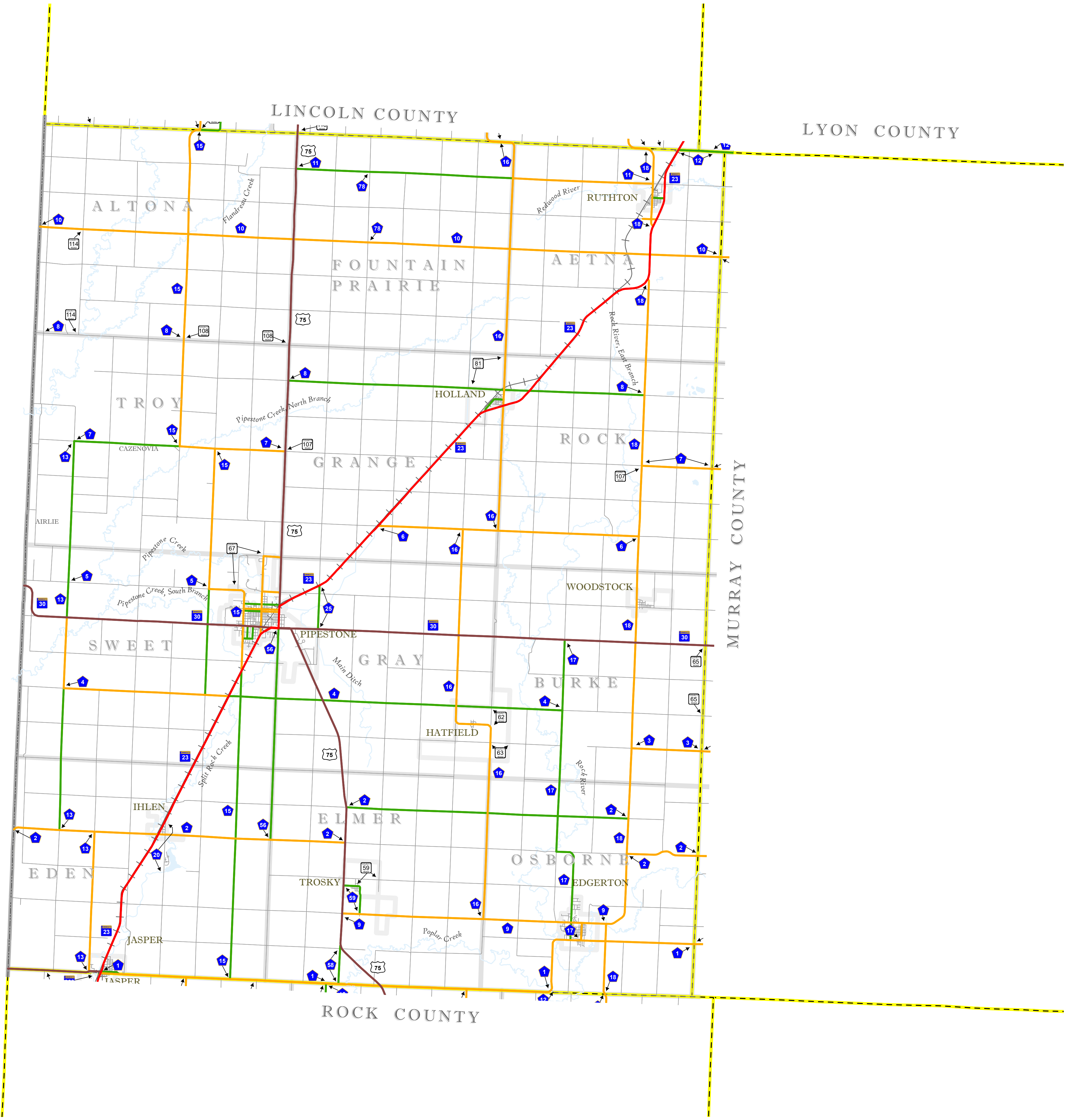
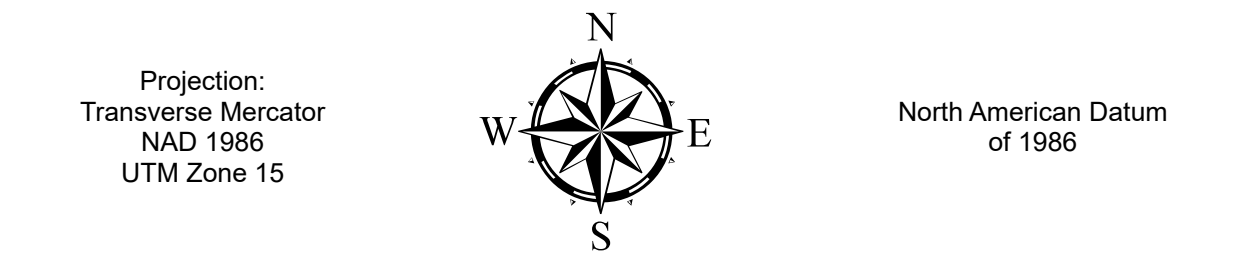
# FUNCTIONAL CLASSIFICATION MAP PIPESTONE COUNTY MINNESOTA

PREPARED BY THE  
MINNESOTA DEPARTMENT OF TRANSPORTATION  
OFFICE OF TRANSPORTATION SYSTEM MANAGEMENT

IN COOPERATION WITH  
U.S. DEPARTMENT OF TRANSPORTATION  
FEDERAL HIGHWAY ADMINISTRATION



DECEMBER 2024



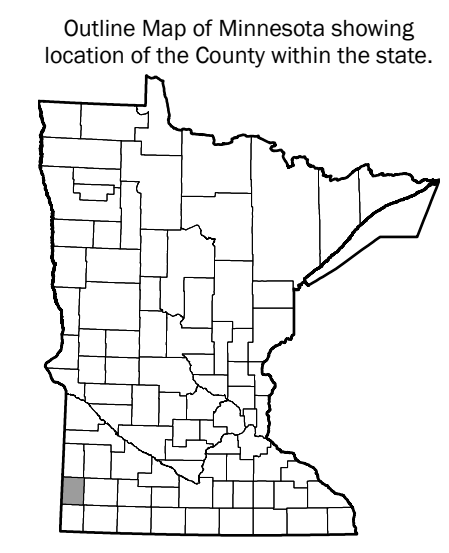
### ROAD AND ROADWAY FEATURES

- Interstate
- Other Freeway or Expressway
- Principal Arterial - Other
- Minor Arterial
- Major Collector
- Minor Collector
- Local
- Railway
- Interstate
- US Highway
- MN Highway
- County State Aid Highway
- County Road

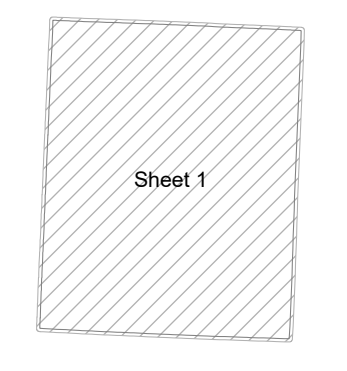
Arrows near road shields indicate the start and end points of routes.

### BOUNDARY FEATURES

- State of Minnesota
- County
- Civil Township



Area of this County	466.45 Sq. Miles
Land Area	465.06 Sq. Miles
2020 Total County Population	9,424



To request information from this document in an alternative format, call 651-366-4718 or 1-800-657-3774 (Greater Minnesota); 711 or 1-800-627-3529 (Minnesota Relay). You may also send an e-mail to ADRequest.dot@state.mn.us. (Please request at least one week in advance.)