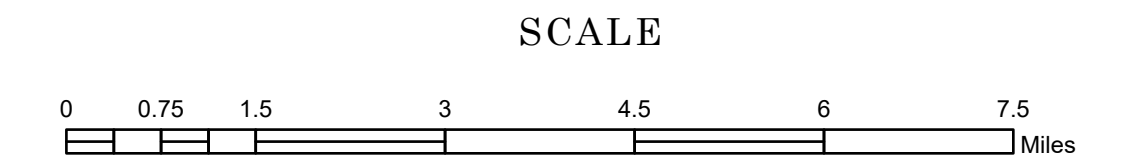


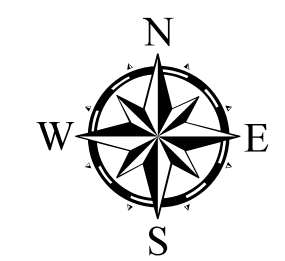
FUNCTIONAL CLASSIFICATION MAP NOBLES COUNTY MINNESOTA

PREPARED BY THE
MINNESOTA DEPARTMENT OF TRANSPORTATION
OFFICE OF TRANSPORTATION SYSTEM MANAGEMENT
IN COOPERATION WITH
U.S. DEPARTMENT OF TRANSPORTATION
FEDERAL HIGHWAY ADMINISTRATION



DECEMBER 2024

Projection:
Transverse Mercator
NAD 1986
UTM Zone 15



North American Datum
of 1986

ROAD AND ROADWAY FEATURES

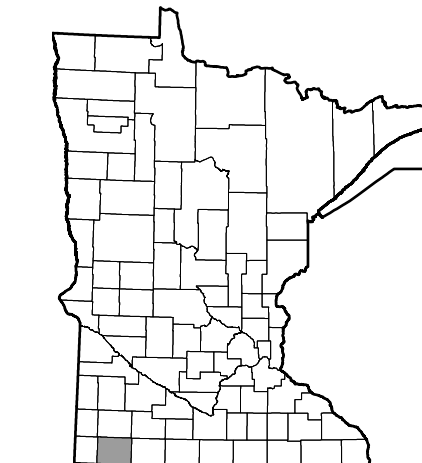
- Interstate
- Other Freeway or Expressway
- Principal Arterial - Other
- Minor Arterial
- Major Collector
- Minor Collector
- Local
- Railway
- Interstate
- US Highway
- MN Highway
- County State Aid Highway
- County Road

Arrows near road shields indicate the start and end points of routes.

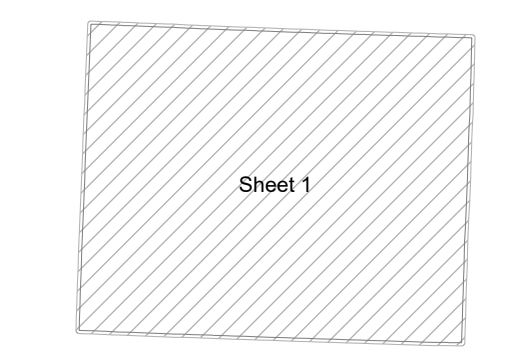
BOUNDARY FEATURES

- State of Minnesota
- County
- Civil Township

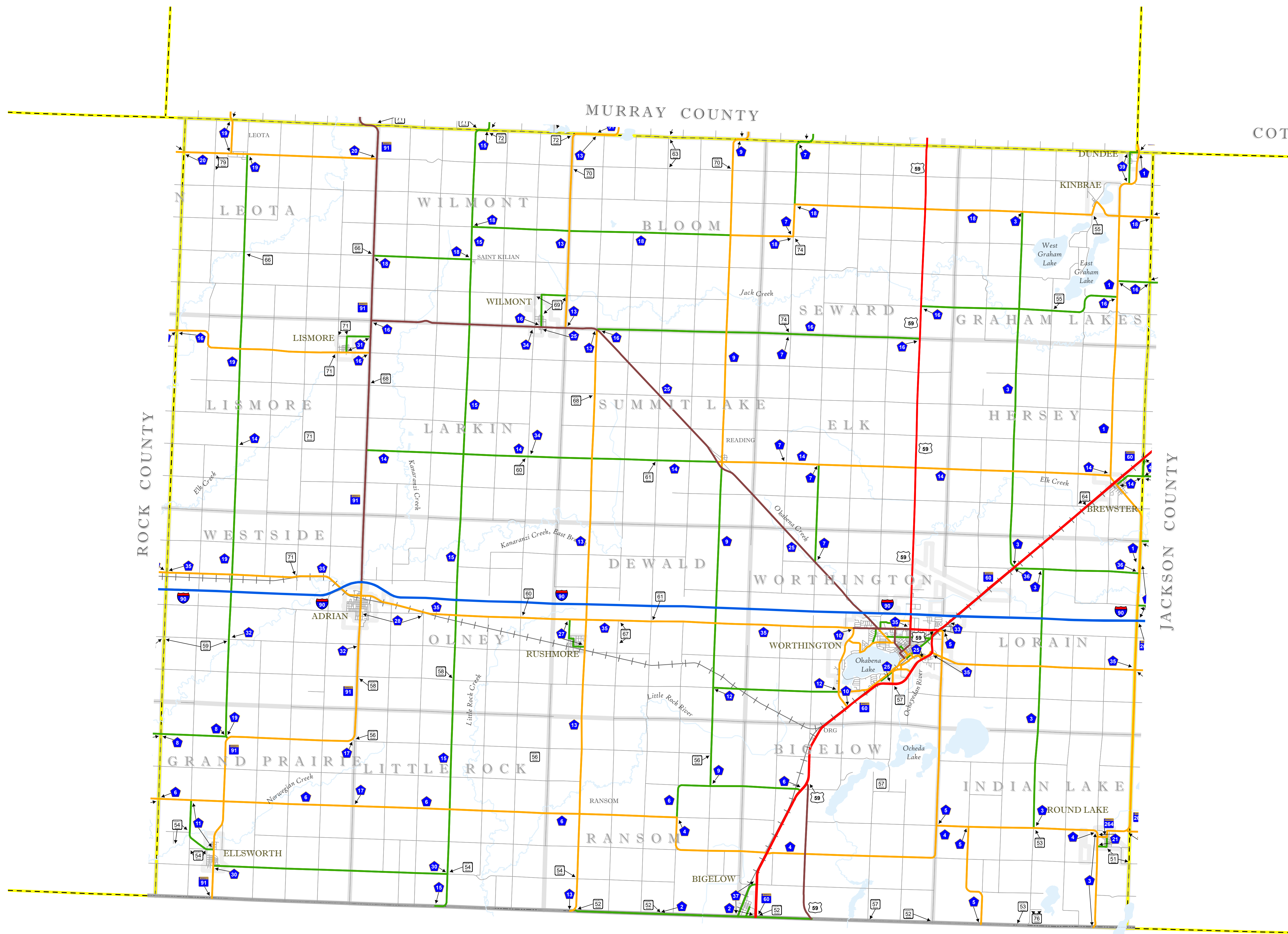
Outline Map of Minnesota showing location of the County within the state.



Outline Map of the County.
Area of this County 722.89 Sq. Miles
Land Area 715.11 Sq. Miles
2020 Total County Population 22,290



SHEET 1 OF 1



I O W A