

GENERAL HIGHWAY MAP WASECA COUNTY MINNESOTA

PREPARED BY THE
MINNESOTA DEPARTMENT OF TRANSPORTATION
OFFICE OF TRANSPORTATION SYSTEM MANAGEMENT
IN COOPERATION WITH
U.S. DEPARTMENT OF TRANSPORTATION
FEDERAL HIGHWAY ADMINISTRATION



2015
BASIC DATA - 2013

Projections
Minnesota Coordinate System
South Zone
Lambert Conformal Conic
North American Datum
of 1983

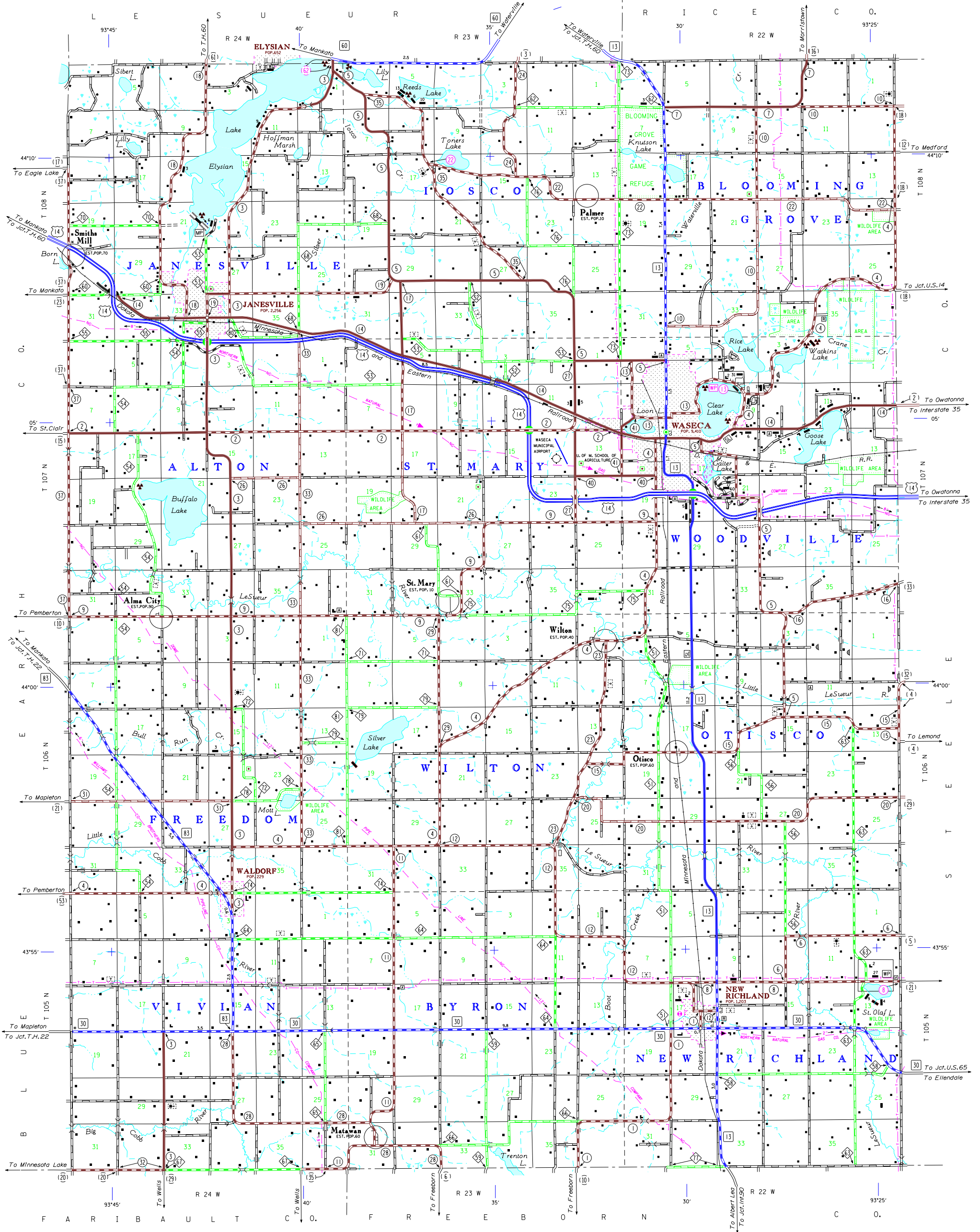


LEGEND

ROAD AND ROADWAY FEATURES	NAVIGATION
PROJECTED ROAD	BANK LINES ON NATURAL STREAMS
PRIMITIVE ROAD	SHIP LINES ON INLAND LAKES
UNIMPROVED ROAD	DOCK, PIER OR LANDING
GRAVEL OR GRAVEL ROAD	NAVIGABLE STREAM
SUBSURFACE ROAD	DAM WITH LOCK
GRAVEL OR STONE ROAD	LANDMARK LIGHT BEACON
BITUMINOUS ROAD	LIGHTHOUSE
PAVED ROAD	
ROAD UNDER CONSTRUCTION	
ROADS IN UNINCORPORATED PLACES EXCEPT WHERE LOCAL ROADS NOT FULLY WITHIN MUNICIPALITIES AND PRIMITIVE ROADS	
FULL TRAFFIC INTERCHANGE	
PARTIAL TRAFFIC INTERCHANGES INDICATING TRAFFIC MOVEMENT	
ROAD SYSTEM DESIGNATIONS	CONSERVATION
INTERSTATE TRUNK HIGHWAY	FOREST RANGER STATION
US NUMERED TRUNK HIGHWAY	GAME OR HUNTER STATION
STATE NUMBERED TRUNK HIGHWAY	NOT PERMANENTLY OCCUPIED
COUNTY STATE AID HIGHWAY	GAME PRESERVE
COUNTY STATE AID IN CONJUNCTION WITH STATE	SEPARATION OR LOCKOUT TRAP
TERMINATION OF DESIGNATED ROUTE	PROMINENT ELEVATION
GREAT RIVER ROAD	W & MUNICIPAL MP + WATERSE PUBLIC ACCESS POINT
FEDERAL AID INTERSTATE SYSTEM	RECREATION
NATIONAL FOREST ESTATE	GOLF COURSE OR COUNTRY CLUB
INDIAN SERVICE ROAD	GOLF CLUB
STATE PARK ROAD	ATHLETIC FIELD
RAILROADS	PLANTATION, BALLFIELD, ETC.
RAILROAD ANY NUMBER OF TRACKS BY A SINGLE OPERATING COMPANY OR BY TRAINS OF ANOTHER COMPANY UNDER THROUGH RIGHTS	BATHING BEACH OR SWIMMING POOL
RAILROADS IN AUTHORITY OF TWO OR MORE TRACKS OR SEPARATELY OPERATED COMPANIES ON SUCCESSION RIGHTS OF WAY	CAMP OR LODGE
UNDEVELOPED HIGHWAY BELIEVED TO BE OVERPASS HIGHWAY ABOVE	FARM AND DWELLING UNITS
AIRWAYS	FARM UNIT
MILITARY FIELD	BARNS OR OTHER THAN FARM
COMMERCIAL OR MUNICIPAL FIELD	BARNS OR OTHER THAN FARM
COMPLETE FACILITIES	BARNS OR OTHER THAN FARM
LANDING AREA OR STRIP	SEASONAL DWELLING
SCALING BASE	HOUSE OR GROUP OF BUILDINGS CLOSELY SPACED
AIRWAY LIGHT BEACON - GENERAL	INDICATE NUMBER OF EACH UNIT
AIRWAY LIGHT BEACON - GENERAL	SHOW LOCATION OF ANY CULTURAL FEATURE
	SHOW DIRECTION OF FLOW
STRUCTURES	INDUSTRIAL
General Symbols Lower 20 Spans	FACTORY OR INDUSTRIAL PLANT
GENERAL SYMBOLS LOWER 20 SPANS	WATER TOWER
PRODUCTION BRIDGE	STORAGE TANKS, OIL OR GAS
DAM WITH ROAD - LARGE SCALE	BEET LAMP
DAM WITH ROAD - SMALL SCALE	STOCK FEEDLOT
DAM WITHOUT ROAD - LARGE SCALE	QUARRY, CRANERY OR CHEESE FACTORY
DAM WITHOUT ROAD - SMALL SCALE	WAREHOUSE
LEVEE OR DIKE	COMMERCIAL
LEVEE OR DIKE WITH ROAD	STORE OR SMALL BUSINESS ESTABLISHMENT
WOOD STRUCTURES 10 TO 20 SPANS	HOTEL
CONCRETE POND OR DAM	TOWERS COAST
FINO - ROAD ESTABLISHED	GARDEN OR VEGETABLE
BOUNDARIES	GREENHOUSE
NATIONAL OR STATE	PUBLIC SERVICE FACILITIES
CITY, TOWNSHIP, TOWNSHIP UNCLASSED	POST OFFICE
NATIONAL OR STATE FOREST	FIRE STATION
INDIAN RESERVATION	MUSEUM
GAME REFUGE	PUBLIC LIBRARY
WILDLIFE MANAGEMENT AREA STATUS ON NATURE RESERVE	LANDING POINT OF ENTRY
MATCH LINE BETWEEN ADJOINING SHEETS OF THE SAME COUNTY	RADIO STATION
INDEFINITE STREAM	GENERIC INDUSTRIAL PLANT
NARROW STREAM	NURSING HOME
WIDE STREAM	TOWN HALL
WADDER OR BRAMBLING STREAM	CONVENTIONAL INSTITUTION
DRAINAGE STATION	CITY CENTERS
LAKE OR POND	STATE CAPITAL
	COUNTY SEAT
	CITY CENTER
	INCORPORATED CITY - GENERALIZED
	UNINCORPORATED CITY
MISCELLANEOUS MAP FEATURES	
COURT OR OTHER RELIGIOUS INSTITUTION	
CHURCH WITH CEMETERY ADJACENT	
PARISH OR CONGREGATIONAL CHURCH	
MONUMENT - GENERAL	
GRAVEL PIT	
WIRE LINE AND POLE	
POWER LINE AND TOWER	
POWER LINE AND TOWER	
STATE PATROL SUBSTATION	
DEPARTMENT OF TRANSPORTATION DISTRICT OFFICE	
WELL - HOUSE, STATE PORT OF ENTRY OR WELL - EXISTING	
WELL - HOUSE	
NATURAL GAS PIPELINE PRODUCTS	
CRUDE OIL OR WATER	
CRUDE OIL OR WATER	
NATURAL GAS PIPELINE PRODUCTS	
PIPELINE - NATURAL GAS	
PIPELINE - PETROLEUM PRODUCTS	
PIPELINE - CRUDE OIL	
TRANSMISSION LINE - OVER OR UNDER	
POWER PLANT	
TRANSMISSION STATION	
TRANSFORMATION STATION	
LONGITUDE AND LATITUDE INTERSECTION	
HISTORIC DISTRICT OR NATIONAL OPEN TO THE PUBLIC	

Outline Map of Minnesota showing
location of the County within the State.

Outline Map of the County,
Area of this County 433 Sq. Miles
Land Area 422 Sq. Miles
2010 Total County Population 15,136



F A R I B A U L T C O. F R E E B O R N C O.