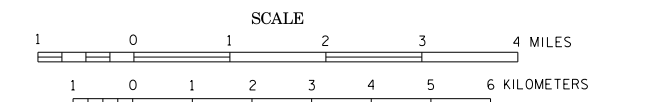


GENERAL HIGHWAY MAP REDWOOD COUNTY MINNESOTA

PREPARED BY THE
MINNESOTA DEPARTMENT OF TRANSPORTATION
OFFICE OF TRANSPORTATION SYSTEM MANAGEMENT
IN COOPERATION WITH
U.S. DEPARTMENT OF TRANSPORTATION
FEDERAL HIGHWAY ADMINISTRATION



2015
BASIC DATA - 2013

Projections
Minnesota Coordinate System
South Zone
Lambert Conformal Conic

North American Datum
of 1983



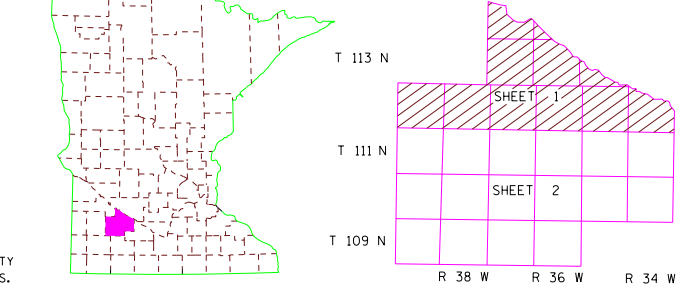
LEGEND

- | | |
|--|-------------------------------|
| ROAD AND ROADWAY FEATURES | NAVIGATION |
| PROJECTED ROAD | BASE LINES ON NATURAL STREAMS |
| PRIMITIVE ROAD | SHIP LINES ON INLAND LAKES |
| UNIMPROVED ROAD | DOCK, PIER OR LANDING |
| GRAVEL AND GRAVEL ROAD | NAVIGABLE STREAM |
| SOIL SURFACE ROAD | LAKE WITH LOCK |
| GRAVEL OR STONE ROAD | LANDMARK LIGHT BEACON |
| BITUMINOUS ROAD | LIGHTHOUSE |
| PAVED ROAD | |
| DECEASED ROAD | |
| FRONT HIGHWAY UNDER CONSTRUCTION | |
| ROADS IN UNINCORPORATED PLACES | |
| ROADS WITHIN MUNICIPALITIES AND | |
| PROVINCIAL ROADS | |
| POINTS BETWEEN WHICH DISTANCES | |
| ARE MEASURED INDICATED | |
| GRADE SEPARATION | |
| FULL TRAFFIC INTERCHANGE | |
| PARTIAL TRAFFIC INTERCHANGES | |
| INDICATING TRAFFIC MOVEMENT | |
| ROAD SYSTEM DESIGNATIONS | |
| INTERSTATE TRUNK HIGHWAY | |
| US NUMBERED FROM HIGHWAY | |
| STATE NUMBERED FROM HIGHWAY | |
| COUNTY STATE AID HIGHWAY | |
| COUNTY STATE AID IN | |
| CONTIGUOUS COUNTY | |
| TERMINATION OF DESIGNATED ROUTE | |
| INTERSTATE EXIT | |
| GREAT RIVER ROAD | |
| FEDERAL AID INTERSTATE SYSTEM | |
| NATIONAL FOREST HIGHWAY | |
| NATIONAL FOREST DEVELOPMENT | |
| INDIAN SERVICE ROAD | |
| STATE STREET ROAD | |
| STATE PARK ROAD | |
| RAILROADS | |
| RAILROAD ANY NUMBER OF TRACKS BY A SINGLE | |
| CARRIED UNDER TRACKS | |
| RAILROADS IN AUTHORITY OF TWO OR MORE TRACKS | |
| OF SEPARATELY OPERATED COMPANIES | |
| RESIDENT RIGHTS OF WAY | |
| GRADE CROSSING | |
| UNDERPASS HIGHWAY BELOW | |
| OVERPASS HIGHWAY ABOVE | |
| ARWAYS | |
| MILITARY FIELD | |
| COMMERCIAL OR MANAGERIAL FIELD | |
| COMPLETE FACILITIES | |
| UNITS FACILITIES | |
| LANDING AREA OR STRIP | |
| SCALELINE BASE | |
| ARWAY LIGHT BEACON-GENERAL | |
| RAISD RANGE STATION | |
| STRUCTURES | |
| GENERAL SYMBOLS LOWER 20' SPAN | |
| HONEYCOMB BRIDGE | |
| SMALL BRIDGES CLOSELY SPACED | |
| OVERPASS | |
| General Symbols 20' TO 30' SPAN | |
| GENERAL | |
| DRAINAGE | |
| ARCH | |
| FRIS | |
| THE ROAD FALL IS KEYS BRIDGE | |
| Other Structures | |
| PROTECTIVE BRIDGE | |
| DAY WITH ROAD (SMALL SCALE) | |
| DAY WITHOUT ROAD (SMALL SCALE) | |
| DAY WITHOUT ROAD (LARGE SCALE) | |
| LEAVE OR SIDE | |
| LEVEL ON SIDE WITH ROAD | |
| WOOD STRUCTURES 10 TO 20' SPAN | |
| CONCRETE FORD OR BR | |
| FORD - ROAD ESTABLISHED | |
| BOUNDARIES | |
| NATIONAL OR STATE | |
| COUNTY | |
| SECTION LINE | |
| CONGRESSIONAL TOWNSHIP U.S. LAND | |
| CORPORATE LINE | |
| SECTION LINE | |
| CONGRESSIONAL AREA | |
| NATIONAL OR STATE PARK | |
| NATIONAL OR STATE FOREST | |
| INDIAN RESERVATION | |
| GAME REFUGE | |
| ADJUTANT | |
| WILDLIFE MANAGEMENT AREA STATED ON | |
| WATERWAY AREA FEDERAL | |
| MATCH LINE BETWEEN ADJOINING SHEETS | |
| OF THE SAME COUNTY | |
| DRAINAGE | |
| INTERMITTENT STREAM | |
| NARROW STREAM | |
| WIDE STREAM | |
| WASH OR BRANCH LANE-UNIONIZATION STATION | |
| UNIONIZATION STATION | |
| DRAINAGE STATION | |
| HISTORIC SETTLEMENT OR NATIONAL | |
| OPEN TO THE PUBLIC | |
| CONSERVATION | |
| FOREST RANGER STATION | |
| GUARD OR BARRIER STATION | |
| NOT PERMANENTLY OCCUPIED | |
| FOR HISTORY | |
| GAME PRESERVE | |
| SECTIONLINE OR LANDMARK TRAIL | |
| PROMINENT ELEVATION | |
| TRAIL POINT OF INTEREST - GENERAL | |
| MP - MUNICIPAL MP - WAYSIDE | |
| PUBLIC ACCESS POINT | |
| RECREATION | |
| GOLF COURSE OR COUNTRY CLUB | |
| GOLF CLUB | |
| ATHLETIC FIELD | |
| MOVEMENT FROM | |
| FOUNTAIN | |
| PLATFORM, BALLFIELD, ETC. | |
| BATHING BEACH OR SWIMMING POOL | |
| SCENE SITE | |
| CAMP OR LODGE | |
| FARM AND DWELLING UNITS | |
| FARM UNIT | |
| BUILDING OTHER THAN FARM | |
| BARNDROCK OR DOMESTIC FOR STUDENTS | |
| WORKSHOP, WAREHOUSE, ETC. | |
| SEASONAL DWELLING | |
| HOUSE OR GROUP OF BUILDINGS CLOSELY SPACED | |
| NUMBER RELATING TO ONE UNIT | |
| INDICATE NUMBER OF EACH UNIT | |
| SHOW OUT OF POSITION | |
| INDUSTRIAL | |
| FACTORY OR INDUSTRIAL PLANT | |
| WAREHOUSE | |
| STORAGE TANKS, OIL OR GAS | |
| BEET SUMP | |
| STOCK PILE, FEEDLOT | |
| QUARRY, LUMBERYARD OR CHEESE FACTORY | |
| WAREHOUSE | |
| COMMERCIAL | |
| STORE OR SMALL BUSINESS ESTABLISHMENT | |
| HOTEL | |
| TRAVELER COURT | |
| STORE OR RESTAURANT | |
| BURRY | |
| GREENHOUSE | |
| PUBLIC SERVICE FACILITIES | |
| POST OFFICE | |
| FIRE STATION | |
| MUSEUM | |
| PUBLIC LIBRARY | |
| TELEPHONE | |
| GENERAL PORT OF ENTRY | |
| RAISD STATION | |
| GENCO, STORAGE PLANT | |
| NURSING HOME | |
| HOSPITAL | |
| TRUCK HALL | |
| CONVENTIONAL INSTITUTION | |
| CITY CENTERS | |
| STATE CAPITAL | |
| COUNTY SEAT | |
| CITY CENTER | |
| INCORPORATED CITY (GENERALIZED) | |
| UNINCORPORATED COMMUNITY | |
| MISCELLANEOUS MAP FEATURES | |
| CHURCH OTHER RELIGIOUS INSTITUTIONS | |
| COURTNEY | |
| CHURCH WITH CEMETERY ADJACENT | |
| PARISHIONAL ROAD COURSE, CREEK, ETC. | |
| MONUMENT (GENERAL) | |
| MONUMENT CAMP OR WATER POINT | |
| GRAVEL PIT | |
| UNIMPROVED ROAD | |
| SCARCE LAND OR WATER POINT | |
| SCARCE LAND OR WATER POINT | |
| STATE PATROL SUBSTATION | |
| EQUIPMENT OF TRANSPORTATION SYSTEMS OFFICE | |
| TOLL HOUSE, STATE PORT OF ENTRY OR | |
| WATER EXISTING | |
| WATER HOUSE | |
| NATURAL GAS PETROLEUM PRODUCTS | |
| CRUISE OIL OR WATER | |
| CRUISE OIL OR WATER | |
| NATURAL GAS PETROLEUM PRODUCTS | |
| CRUISE OIL OR WATER | |
| PIPELINE, NATURAL GAS | |
| PIPELINE, PETROLEUM PRODUCTS | |
| PIPELINE, CRUISE OIL | |
| PIPELINE, WATER | |
| TRANSMISSION LINE (33KV OR OVER) | |
| POWER PLANT | |
| TRANSFORMER STATION | |
| TRANSMISSION TOWER TRANSMISSION STATION | |
| LOCATION | |
| LATITUDE AND LONGITUDE INTERSECTION | |
| HISTORIC SETTLEMENT OR NATIONAL | |
| OPEN TO THE PUBLIC | |

Outline Map of Minnesota showing location of the County within the State.

Outline Map of the County, showing portion to grid delineated on this sheet.

Area of this County 881 Sq. Miles
Land Area 881 Sq. Miles
2010 Total County Population 16,019



To request information from this document in an alternative format, call 651-366-4718 or 1-800-657-3774 (Greater Minnesota), 711 or 1-800-627-3529 (Minnesota Relay). You may also send an e-mail to ADArequest@state.mn.us. (Please request at least one week in advance.)

NOTE: FOR DETAIL OF COUNTY STATE AID HIGHWAYS AND COUNTY ROADS IN INCORPORATED PLACES, SEE MAPS OF MUNICIPALITIES.