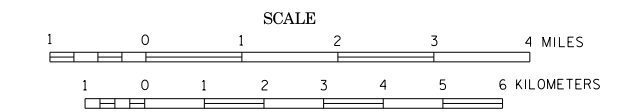


GENERAL HIGHWAY MAP RED LAKE COUNTY MINNESOTA

PREPARED BY THE
MINNESOTA DEPARTMENT OF TRANSPORTATION
OFFICE OF TRANSPORTATION SYSTEM MANAGEMENT
IN COOPERATION WITH
U.S. DEPARTMENT OF TRANSPORTATION
FEDERAL HIGHWAY ADMINISTRATION



2015
BASIC DATA - 2013

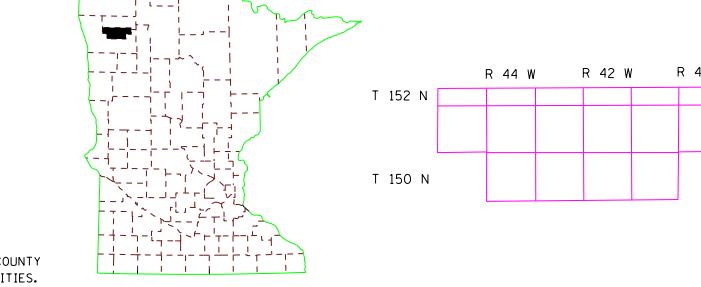
Projection: Minnesota Coordinate System, North Zone, Lambert Conformal Conic
North American Datum of 1983



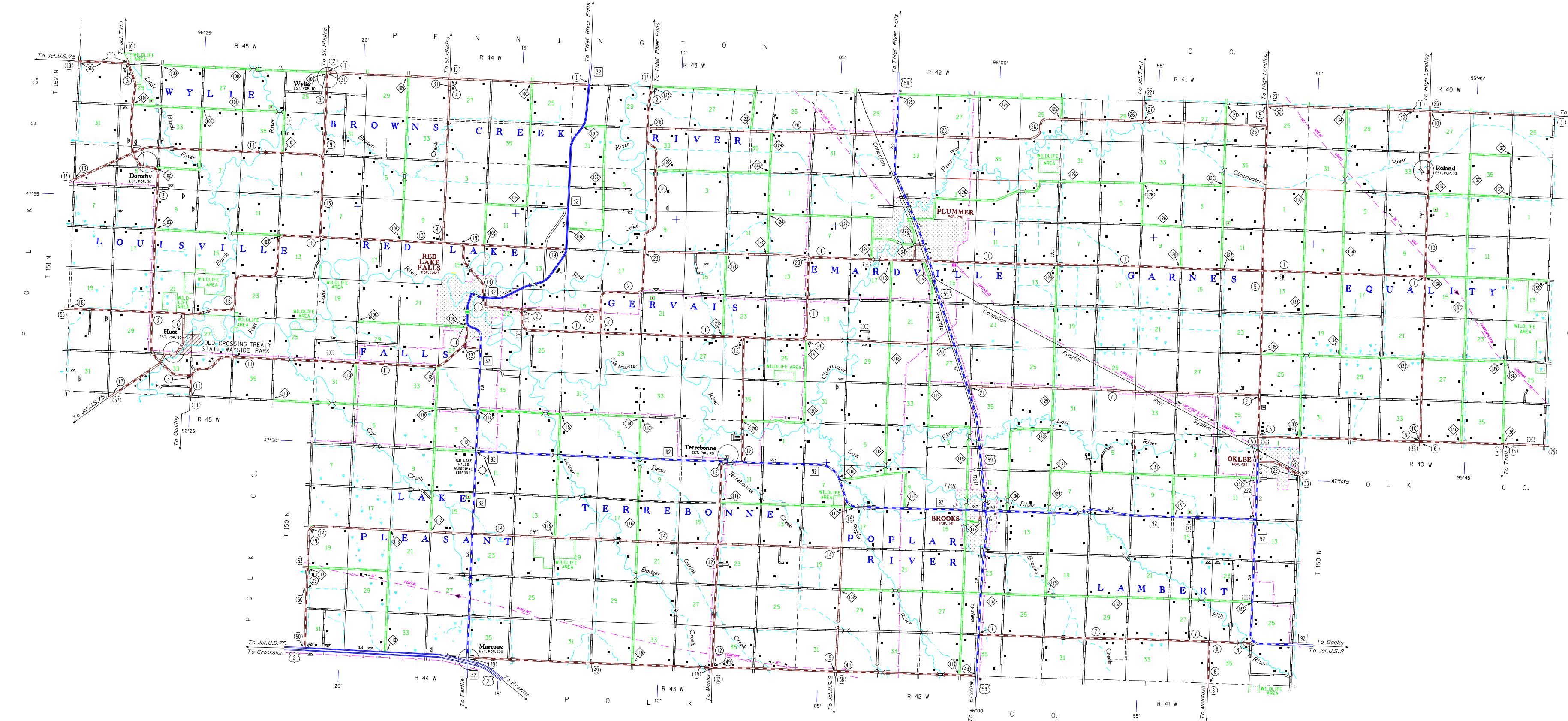
LEGEND

- | | |
|---|------------------------------|
| ROAD AND ROADWAY FEATURES | NAVIGATION |
| PROJECTED ROAD | SHIP LINES ON INLAND STREAMS |
| UNIMPROVED ROAD | SHIP LINES ON LAKE LAKES |
| GRADED AND DRAINED ROAD | DOCK, PIER OR LANDING |
| SOIL SURFACE ROAD | BOAT LIFT |
| GRAVEL OR STONE ROAD | UNAVAILABLE STREAM |
| RETAINING ROAD | LANDMARK LIGHT BEACON |
| PAVED ROAD | LIGHTHOUSE |
| ROADWAY UNDER CONSTRUCTION | |
| ROADS IN UNINCORPORATED PLACES | |
| EXTENSIONS OF LOCAL ROADS NOT PAVED BY MUNICIPALITIES AND PRIVATE OWNERS | |
| POINTS BETWEEN WHICH DISTANCES ARE MEASURED INDICATED THIS WAY | |
| GRADE SEPARATION | |
| FULL TRAFFIC INTERCHANGE | |
| PARTIAL TRAFFIC INTERCHANGES INDICATING TRAFFIC MOVEMENT | |
| ROAD SYSTEM DESIGNATIONS | |
| INTERSTATE TRUNK HIGHWAY | |
| U.S. NUMBERED TRUNK HIGHWAY | |
| STATE NUMBERED TRUNK HIGHWAY | |
| COUNTY STATE AID HIGHWAY | |
| COUNTY STATE AID | |
| INDICATING COUNTY | |
| TERMINATION OF DESIGNATED ROUTE | |
| RAILROADS | |
| INTERSTATE RAILROAD | |
| GREAT RIVER ROAD | |
| FEDERAL AID INTERSTATE SYSTEM | |
| NATIONAL FOREST DEVELOPMENT | |
| INDIAN SERVICE ROAD | |
| STATE HIGHWAY | |
| STATE PARK ROAD | |
| RAILROADS IN AUTHORITY OF STATE OR MORE TRACKS OR SEPARATELY OPERATED COMPANIES | |
| ADJACENT RIGHTS OF WAY | |
| GRADE CROSSING | |
| CROSSINGS SUBJECT TO BELLEVILLE | |
| CROSSING HIGHWAY | |
| AIRWAYS | |
| MILITARY FIELD | |
| COMMERCIAL OR MUNICIPAL FIELD | |
| COMPLETE FACILITIES | |
| LIMITED FACILITIES | |
| LANDING AREA OR STRIP | |
| SEAPLANE BASE | |
| AIRWAY LIGHT BEACON, GENERAL | |
| RADIO WAVE STATION | |
| STRUCTURES | |
| General Symbols Lower 20' span | |
| HOLLOW BRIDGE | |
| SMALL BRIDGES CLOSELY SPACED | |
| DRAMMIDGE | |
| General Symbols (DOZ ROAD OVER) | |
| GENERAL | |
| DRAMMIDGE | |
| ARCH | |
| TRUSS | |
| THE ABOVE FALL IN BRIDGE WHEN APPLICABLE | |
| Other Structures | |
| PEDERSTADT BRIDGE | |
| DAW WITH ROAD (LARGE SCALE) | |
| DAW WITH ROAD (SMALL SCALE) | |
| DAW WITHOUT ROAD (LARGE SCALE) | |
| DAW WITHOUT ROAD (SMALL SCALE) | |
| LEVEE OR DUNE | |
| LEVEE ON SIDE WITH ROAD | |
| WOOD STRUCTURES 0' TO 20' SPAN | |
| FOOD - ROAD ESTABLISHMENTS | |
| BOUNDARIES | |
| NATIONAL OR STATE | |
| COUNTY | |
| CITY, TOWNSHIP | |
| CORPORATE TOWNSHIP (U.S. LAND) | |
| CORPORATE LINE | |
| SECTION LINE | |
| CORPORATE AREA | |
| NATIONAL OR STATE PARK | |
| NATIONAL OR STATE FOREST | |
| INDIAN RESERVATION | |
| GRAND REFUGE | |
| WILDLIFE MANAGEMENT AREA (STATE OR FEDERAL) | |
| WILDLIFE AREA (FEDERAL) | |
| WATCH LINE BETWEEN ADJOINING SHEETS OF THE SAME COUNTY | |
| DRAINAGE | |
| INTERMITTENT STREAM | |
| NARROW STREAM | |
| WIDE STREAM | |
| WATER OR SWAMP LAND (NATIONAL) | |
| DRAINAGE STATION | |
| LAKE OR POND | |
| CONSERVATION | |
| FOREST RANGER STATION | |
| GAME OR BIRDS STATION | |
| NOT PERMANENTLY OCCUPIED | |
| GAME PRESERVE | |
| SEPARATION OR LAYOUT MARKS (PROHIBIT ELEVATION) | |
| SMALL POND OF STATE OR COUNTY | |
| MP - MUNICIPAL, NP - NATURE | |
| PUBLIC ACCESS POINT | |
| RECREATION | |
| GOLF COURSE OR COUNTRY CLUB | |
| ATHLETIC FIELD | |
| RECREATION CENTER | |
| PUBLIC GROUND | |
| BATHING BEACH OR SKIING POOL | |
| SCENE SITE | |
| CAMP OR LODGE | |
| FARM AND DWELLING UNITS | |
| FARM UNIT | |
| BARNS OR OTHER THAN FARM | |
| BARNS OR DWELLINGS FOR STUDENTS | |
| WORKS, WAREHOUSES, ETC. | |
| SEASONAL DWELLING | |
| HOUSE OR GROUP OF BUILDINGS CLOSELY SPACED | |
| NUMBER ADJACENT TO SHOW | |
| INDICATE NUMBER OF EACH UNIT | |
| SET AND NAME ARE USED TO INDICATE LOCATION OF ANY CULTURAL FEATURE | |
| SHOW OUT OF POSITION | |
| INDUSTRIAL | |
| FACTORY OR INDUSTRIAL PLANT | |
| STORAGE TANKS, OIL OR GAS | |
| BEET SUMP | |
| STOCK FEEDLOT | |
| QUARTERS, FERRYBOAT OR CHEESE FACTORY | |
| WAREHOUSE | |
| COMMERCIAL | |
| STORE OR SMALL BUSINESS ESTABLISHMENT | |
| HOTEL | |
| TRAVEL COURT | |
| DRIVE IN THEATRE | |
| BURDEN | |
| GREENHOUSE | |
| PUBLIC SERVICE FACILITIES | |
| POST OFFICE | |
| FIRE STATION | |
| MUSEUM | |
| SCHOOL | |
| RAILROAD POINT OF ENTRY | |
| RAILROAD STATION | |
| SEWAGE TREATMENT PLANT | |
| NURSING HOME | |
| HOSPITAL | |
| TOWN HALL | |
| CORRECTIONAL INSTITUTION | |
| CITY CENTERS | |
| STATE CAPITAL | |
| COUNTY SEAT | |
| CITY CENTER | |
| INCORPORATED CITY (GENERALIZED) | |
| UNINCORPORATED COMMUNITY | |
| MISCELLANEOUS MAP FEATURES | |
| CHURCH, OTHER RELIGIOUS INSTITUTIONS | |
| CHURCH WITH GROUND ADJACENT | |
| LANDMARK (SEE COUNTY, PRESERVE) | |
| MONUMENT (GENERAL) | |
| GRAVEL PIT | |
| AUTO JUMPWAY | |
| QUARRY, WETLAND, QUARRY | |
| STATE PATROL SUBSTATION | |
| EQUIPMENT OF TRANSPORTATION DEPARTMENT | |
| TOLL HOUSE, STATE POST OF ENTRY OR WEIR STATION | |
| WELLS HOUSE | |
| NATURAL GAS PETROLEUM PRODUCTS | |
| CRUDE OIL OR WATER | |
| CRUDE OIL OR WATER | |
| NATURAL GAS PETROLEUM PRODUCTS | |
| PIPELINE, NATURAL GAS | |
| PIPELINE, PETROLEUM PRODUCTS | |
| PIPELINE, CRUDE OIL | |
| TRANSMISSION LINE (COIL OR OVER) | |
| POWER PLANT | |
| TRANSFORMER STATION | |
| TRANSMISSION TOWER (TRANSMISSION STATION) | |
| LATITUDE AND LONGITUDE INTERSECTION | |
| HISTORIC SITE (STATE OR NATIONAL) | |
| OPEN TO THE PUBLIC | |

Outline Map of Minnesota showing location of the County within the State.



Area of this County 433 Sq. Miles
Land Area 433 Sq. Miles
2010 Total County Population 4,081



To request information from this document in an alternate format, call 651-394-4718 or 1-800-657-3774 (Greater Minnesota), 711 or 1-800-627-3529 (Minnesota Relay). You may also send an e-mail to ADArequest.dot@state.mn.us. (Please request at least one week in advance.)

NOTE: FOR DETAIL OF COUNTY STATE AID HIGHWAYS AND COUNTY ROADS IN INCORPORATED PLACES, SEE MAPS OF MUNICIPALITIES.