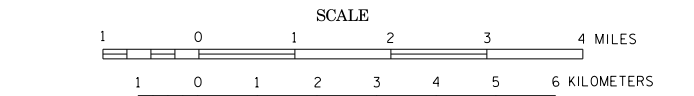


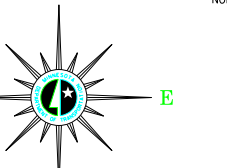
POLK COUNTY MINNESOTA

PREPARED BY THE
 MINNESOTA DEPARTMENT OF TRANSPORTATION
 OFFICE OF TRANSPORTATION SYSTEM MANAGEMENT
 IN COOPERATION WITH
 U.S. DEPARTMENT OF TRANSPORTATION
 FEDERAL HIGHWAY ADMINISTRATION



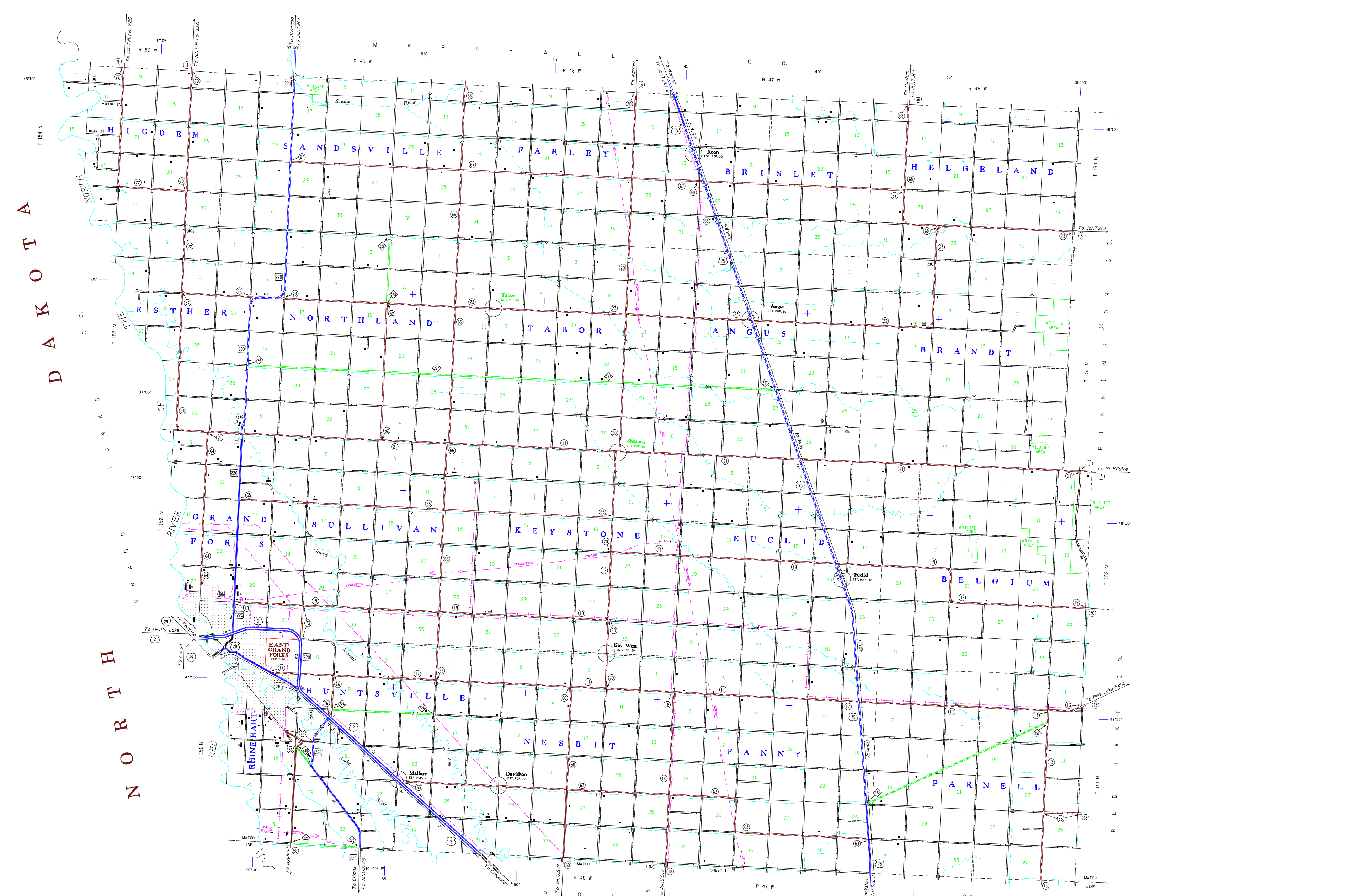
2015
 BASIC DATA - 2013

Projection: Minnesota Coordinate System, North Zone
 Lambert Conformal Conic
 North American Datum of 1983

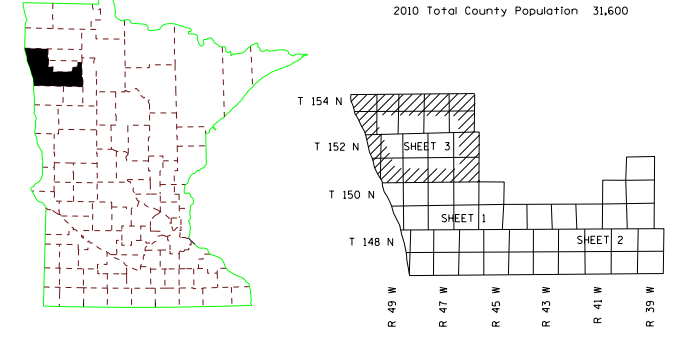


LEGEND

ROAD AND ROADWAY FEATURES	NAVIGATION	CONSERVATION	RECREATION	FARM AND DWELLING UNITS	INDUSTRIAL	COMMERCIAL	PUBLIC SERVICE FACILITIES	CITY CENTERS	MISCELLANEOUS MAP FEATURES	BOUNDARIES	DRAINAGE
PROJECTED ROAD	BASE LINES ON NEURAL STREAMS	FOREST RANGER STATION	GOLF COURSE OR COUNTRY CLUB	FARM UNIT	FACTORY OR INDUSTRIAL PLANT	STORE OR SMALL BUSINESS ESTABLISHMENT	POST OFFICE	STATE CAPITAL	CHURCH OTHER RELIGIOUS INSTITUTIONS	NATIONAL OR STATE FOREST	INDEPENDENT STREAM
UNIMPROVED ROAD	SHIP LINES ON TRAILING LAKES	GUARD OR BARRER STATION	SKI RESORT	BARNS OR BARN BUILDINGS	WAREHOUSE	HOTEL	FIRE STATION	COUNTY SEAT	COLLEGE OTHER RELIGIOUS INSTITUTIONS	NATIONAL OR STATE PARK	NARROW STREAM
GRAVEL OR GRAVEL ROAD	SHOULDER OR LAUNDRY	NOT PERMANENTLY OCCUPIED	ATHLETIC FIELD	BARN OR BARN BUILDING	STORAGE TANK, OIL OR GAS	TRAVEL CAMP	MUSEUM	CITY CENTER	CHURCH WITH IDENTIFY ADJACENT	CITY	WIDE STREAM
SOIL SURFACE ROAD	ROAD WITH LOCK	TRAILWAY	PLAYGROUND	INDUSTRIAL	STOCK RAISE FENCED	CAMP OR TRAIL	PUBLIC LIBRARY	CITY CENTER	CHURCH WITH IDENTIFY ADJACENT	COUNTY	WATERWAY AREA STATED ON FEDERAL AID MAPS
GRAVEL OR STONE ROAD	DAM WITH LOCK	GAME PRESERVE	POND SWAMP	INDUSTRIAL	QUARRY	CAMP OR TRAIL	SCHOOL	CITY CENTER	CHURCH WITH IDENTIFY ADJACENT	COUNTY	WATERWAY AREA STATED ON FEDERAL AID MAPS
ROAD UNDER CONSTRUCTION	INVISIBLE STREAM	GAME PRESERVE	BATHING BEACH OR SWIMMING POOL	INDUSTRIAL	QUARRY	CAMP OR TRAIL	SCHOOL	CITY CENTER	CHURCH WITH IDENTIFY ADJACENT	COUNTY	WATERWAY AREA STATED ON FEDERAL AID MAPS
ROAD TO BE CONSTRUCTED	LANDMARK LIGHT BEACON	GAME PRESERVE	CAMP SITE	INDUSTRIAL	QUARRY	CAMP OR TRAIL	SCHOOL	CITY CENTER	CHURCH WITH IDENTIFY ADJACENT	COUNTY	WATERWAY AREA STATED ON FEDERAL AID MAPS
ROAD UNDER CONSTRUCTION	LIGHTHOUSE	GAME PRESERVE	CAMP SITE	INDUSTRIAL	QUARRY	CAMP OR TRAIL	SCHOOL	CITY CENTER	CHURCH WITH IDENTIFY ADJACENT	COUNTY	WATERWAY AREA STATED ON FEDERAL AID MAPS
ROAD TO BE CONSTRUCTED		GAME PRESERVE	CAMP SITE	INDUSTRIAL	QUARRY	CAMP OR TRAIL	SCHOOL	CITY CENTER	CHURCH WITH IDENTIFY ADJACENT	COUNTY	WATERWAY AREA STATED ON FEDERAL AID MAPS
ROAD TO BE CONSTRUCTED		GAME PRESERVE	CAMP SITE	INDUSTRIAL	QUARRY	CAMP OR TRAIL	SCHOOL	CITY CENTER	CHURCH WITH IDENTIFY ADJACENT	COUNTY	WATERWAY AREA STATED ON FEDERAL AID MAPS
ROAD TO BE CONSTRUCTED		GAME PRESERVE	CAMP SITE	INDUSTRIAL	QUARRY	CAMP OR TRAIL	SCHOOL	CITY CENTER	CHURCH WITH IDENTIFY ADJACENT	COUNTY	WATERWAY AREA STATED ON FEDERAL AID MAPS



Outline Map of Minnesota showing location of the County within the State.



To request information from this document in an alternative format:
 call 651-366-4778 or 1-800-657-3774 (Greater Minnesota);
 711 or 1-800-657-3774 (Minnesota Relay). You may also send
 an e-mail to ADArequest.dor@state.mn.us.
 (Please request at least one week in advance.)

NOTE: FOR DETAIL OF COUNTY STATE AID HIGHWAYS AND COUNTY
 ROADS IN INCORPORATED PLACES, SEE MAPS OF MUNICIPALITIES.