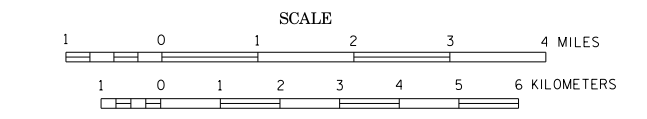


GENERAL HIGHWAY MAP BELTRAMI COUNTY MINNESOTA

PREPARED BY THE
MINNESOTA DEPARTMENT OF TRANSPORTATION
OFFICE OF TRANSPORTATION SYSTEM MANAGEMENT
IN COOPERATION WITH
U.S. DEPARTMENT OF TRANSPORTATION
FEDERAL HIGHWAY ADMINISTRATION



2015
BASIC DATA - 2013

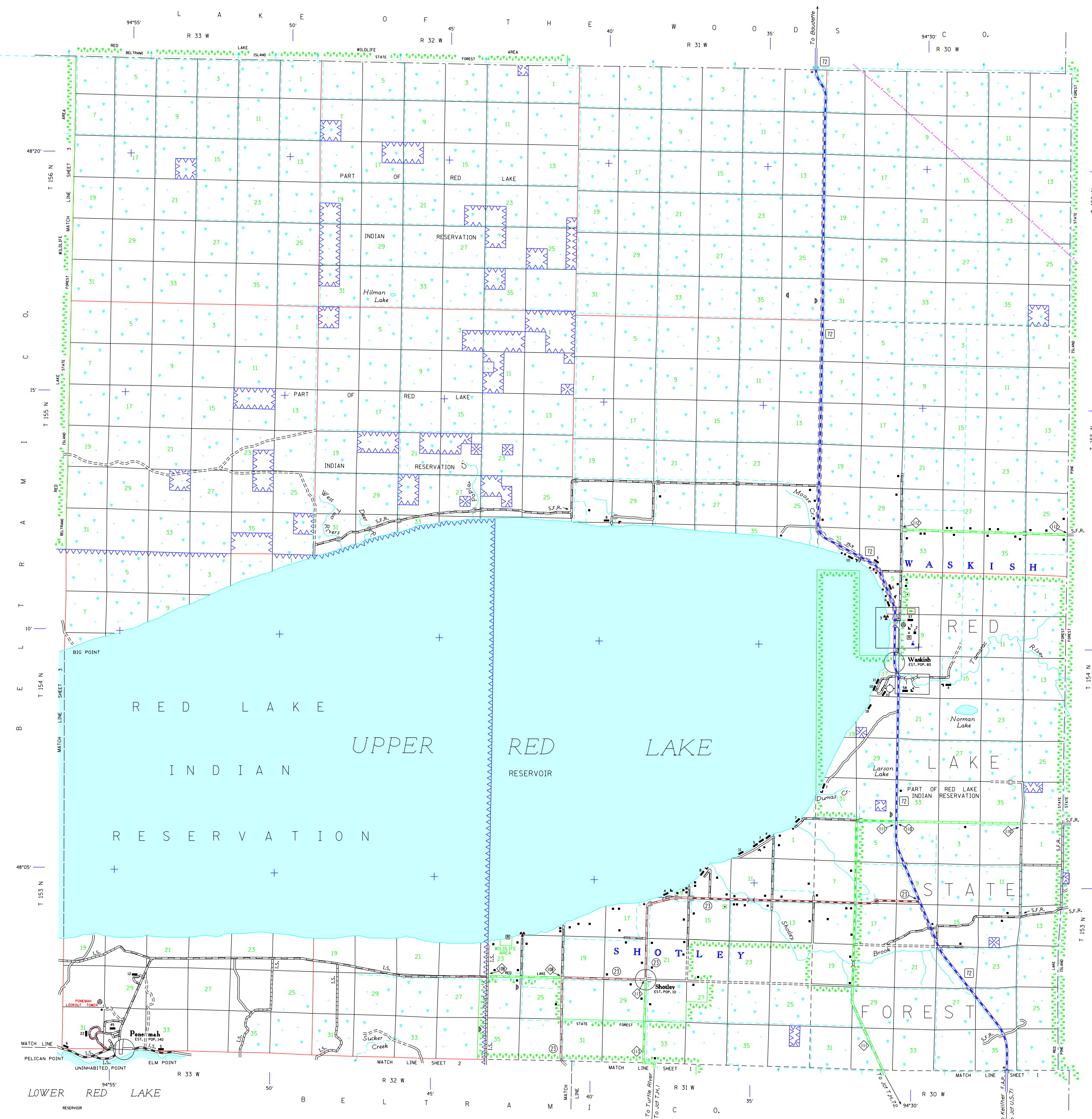
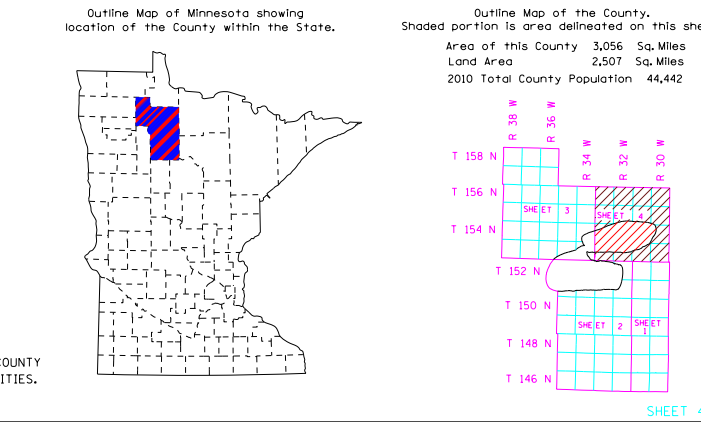
Projections
Minnesota Coordinate System
North Zone
Lambert Conformal Conic

North American Datum
of 1983



LEGEND

ROAD AND ROADWAY FEATURES	NAVIGATION
PROJECTED ROAD	BASE LINES ON NATURAL STREAMS
PRIMITIVE ROAD	SHIP LINES ON INLAND LAKES
UNIMPROVED ROAD	DOCK, PIER OR LANDING
GRAVEL AND GRAVEL ROAD	UNAVAILIBLE STREAM
SOIL SURFACE ROAD	LANDMARK LIGHT BEACON
GRAVEL OR STONE ROAD	LIGHTHOUSE
BITUMINOUS ROAD	
PAVED ROAD	
DECEASED ROAD	
ROAD UNDER CONSTRUCTION	
ROADS IN UNINCORPORATED PLACES	
FULL WITHIN MUNICIPALITIES AND PRIMITIVE ROADS	
POINTS BETWEEN WHICH DISTANCES ARE MEASURED INDICATED	
GRADE SEPARATION	
FULL TRAFFIC INTERCHANGE	
PARTIAL TRAFFIC INTERCHANGES INDICATING TRAFFIC MOVEMENT	
ROAD SYSTEM DESIGNATIONS	
INTERSTATE TRUNK HIGHWAY	
UNNUMBERED FROM HIGHWAY	
STATE NUMBERED FROM HIGHWAY	
COUNTY STATE AID HIGHWAY	
COUNTY ROAD	
COUNTY STATE AID IN CONSTRUCTING COUNTY	
TERMINATION OF DESIGNATED ROUTE	
RAILROADS	
RAILROAD ANY NUMBER OF TRACKS BY A SINGLE OPERATING COMPANY OR BY TRAINS OF ANOTHER CARRIED UNDER THROUGH RIGHTS	
SEPARATELY OPERATED COMPANIES OR RESIDENT RIGHTS OF WAY	
UNDEVELOPED HIGHWAY BELIEVED OVERPASS HIGHWAY ABOVE	
ARRIWAYS	
MILITARY FIELD	
COMMERCIAL OR MUNICIPAL FIELD	
COMPLETE FACILITIES	
LANDING AREA OR STRIP	
SEAPLANE BASE	
ARMY LIGHT BEACON-GENERAL RAISD RANGE STATION	
STRUCTURES	
General Symbols lower 20' span	
PROTECTIVE BRIDGE	
SMALL BRIDGES CLOSELY SPACED	
General Symbols (20' span and over)	
GENERAL	
DRAINAGE	
INTERRUPTED STREAM	
NARROW STREAM	
WIDE STREAM	
MARSH OR SWAMP LAND	
DRAINAGE STATION	
LAKE OR POND	
CONSERVATION	
FOREST RANGER STATION	
GUARD OR BARRIER STATION	
FOOT BRIDGE	
GAME PRESERVE	
SEPARATION OF LANDS UNDER FEDERAL PRIVILEGE ELEVATION	
SMALL POND OR STREAM OR CANAL	
MP - MUNICIPAL MP - RAYSIDE PUBLIC ACCESS POINT	
RECREATION	
GOLF COURSE OR COUNTRY CLUB	
ATHLETIC FIELD	
MOVEMENT FROM POND, SHAD, BALLFIELD, ETC.	
BATHING BEACH OR SWIMMING POOL SCENE SITE CAMP OR LODGE	
FARM AND DWELLING UNITS	
FARM UNIT	
BUILDINGS OTHER THAN FARM BARNHOUSES OR DOMESTICS FOR STUDENTS, WORKSHOPS, ETC.	
SEASONAL DWELLING HOUSE OR GROUP OF BUILDINGS CLOSELY SPACED	
NUMBER RELATIVE TO DWELLING INDICATE NUMBER OF EACH UNIT DOT LINE ABOVE LINE USED TO INDICATE LOCATION OF ANY CULTURAL FEATURE SHOW OUT OF POSITION	
INDUSTRIAL	
FACTORY OR INDUSTRIAL PLANT LUMBER STORAGE TANKS, OIL OR GAS STEEL PLANT SHEET PLANT STOCK YARD, FEEDLOT QUARRY, LUMBERYARD OR CHEESE FACTORY WAREHOUSE	
COMMERCIAL	
STORE OR SMALL BUSINESS ESTABLISHMENT HOTEL TOLLEYS COURT RESTAURANT BARRACKS GREENHOUSE	
PUBLIC SERVICE FACILITIES	
POST OFFICE FIRE STATION PUBLIC LIBRARY SCHOOL ALL-ROUNDER POINT OF ENTRY RAILROAD STATION SEMI-INDUSTRIAL PLANT NURSING HOME HOSPITAL TOWN HALL CORRECTIONAL INSTITUTION	
CITY CENTERS	
STATE CAPITAL	
COUNTY SEAT	
CITY CENTER	
INCORPORATED CITY (GENERALIZED)	
UNINCORPORATED COMMUNITY	
MISCELLANEOUS MAP FEATURES	
CHURCH OR RELIGIOUS INSTITUTION	
CORNER	
CHURCH WITH CEMETERY ADJACENT	
PARISH OR CHURCH	
MONUMENT (GENERAL)	
GRAVEL PIT	
SALE OF LAND	
SCHEMATIC PLAN	
STATE PATROL STATION	
DEPARTMENT OF TRANSPORTATION DISTRICT OFFICE TOLL HOUSE, STATE POINT OF ENTRY OR NEW BRIDGE	
NATURAL GAS PETROLEUM PRODUCTS CRUDE OIL OR WATER GASOLINE OR PETROLEUM PRODUCTS NATURAL GAS PETROLEUM PRODUCTS PIPELINE, NATURAL GAS PIPELINE, PETROLEUM PRODUCTS PIPELINE, CRUDE OIL TRANSMISSION LINE (33" OR OVER) TRANSFORMER STATION SUBSTATION LOW VOLT TRANSMISSION SYSTEM LOCATION OF TRANSMISSION SYSTEM LATITUDE AND LONGITUDE INTERSECTION OPEN TO THE PUBLIC	



To request information from this document in an alternative format,
call 651-366-4778 or 1-800-657-3774 (Greater Minnesota);
TDD or 651-366-4778 (Minnesota Relay). You may also send
an e-mail to ADRequest dot@state.mn.us.
(Please request at least one week in advance.)

NOTE: FOR DETAIL OF COUNTY STATE AID HIGHWAYS AND COUNTY
ROADS IN INCORPORATED PLACES, SEE MAPS OF MUNICIPALITIES.