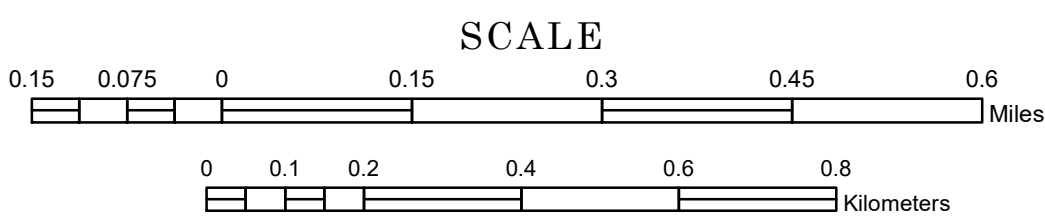


MUNICIPALITY OF
PAYNESVILLE

PREPARED BY THE
MINNESOTA DEPARTMENT OF TRANSPORTATION
OFFICE OF TRANSPORTATION SYSTEM MANAGEMENT

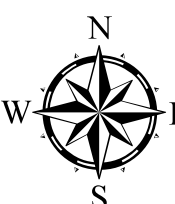
IN COOPERATION WITH
U.S. DEPARTMENT OF TRANSPORTATION
FEDERAL HIGHWAY ADMINISTRATION



1 in = 800 ft

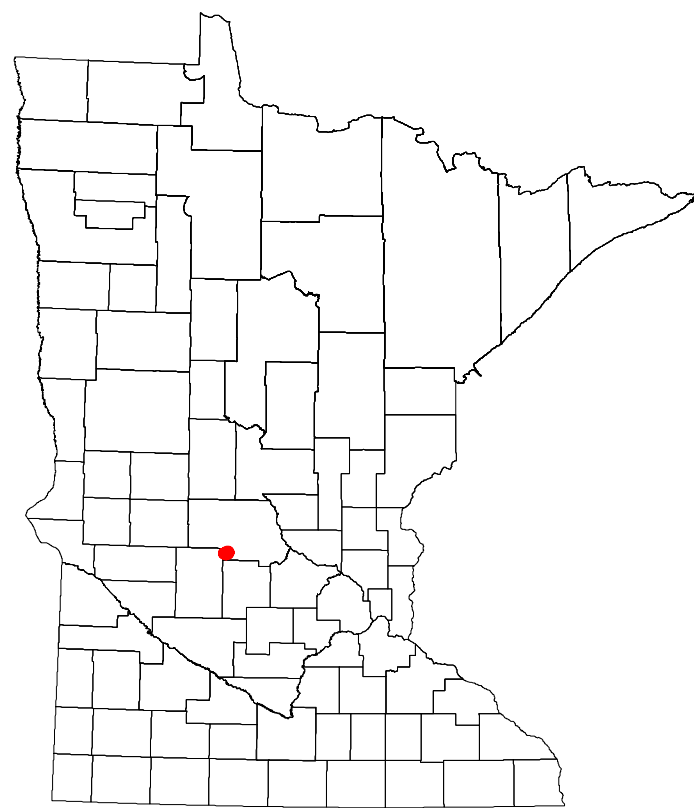
2024

Projection:
Transverse Mercator
NAD 1986
UTM Zone 15

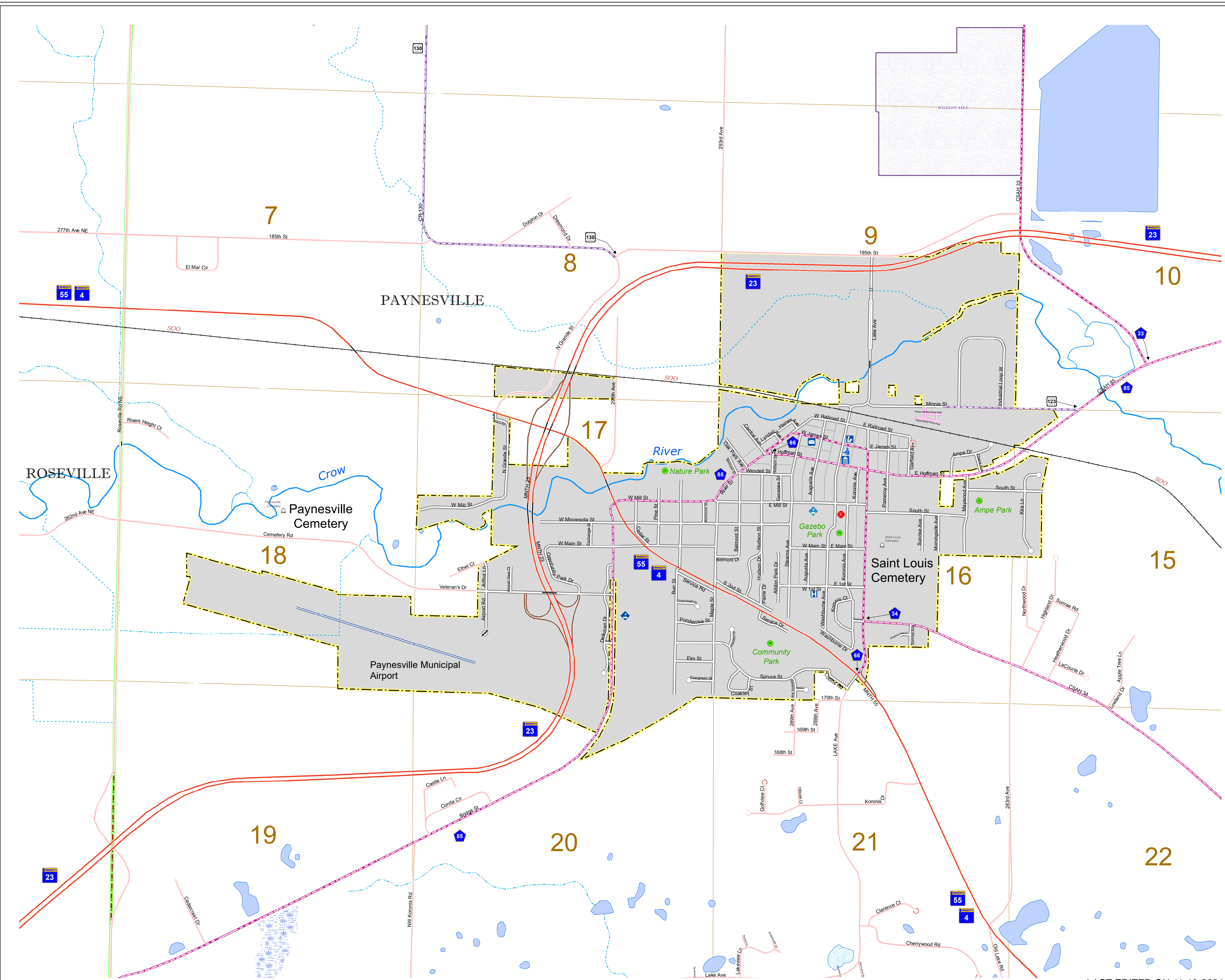


North American Datum
of 1986

ROAD AND ROADWAY FEATURES		PUBLIC SERVICE FEATURES	
INTERSTATE		MINOT OFFICE	
US HIGHWAY		MINOT TRUCK STATION	
COUNTY STATE AID HIGHWAY		HIGHWAY PATROL DISTRICT OFFICE	
COUNTY ROAD		STATE TRAVEL INFORMATION CENTER	
MUNICIPAL STREET		REST AREA (Full Service)	
MUNICIPAL STATE AID STREET		REST AREA (Vault Toilet)	
PRIVATE STREET/ROAD		WAYSIDE (Vault or Pn Toilet)	
UNORGANIZED TERRITORY ROAD		PUBLIC ACCESS POINT	
RAMP OR CONNECTOR		LOCAL PARK	
INTERSTATE EXIT		FAIRGROUNDS	
GREAT RIVER ROAD		PORT OF ENTRY	
OTHER ROADS		PARK AND RIDE LOT	
RAILROAD		PUBLIC UNIVERSITY/COLLEGE	
EMPIRE BUILDER STATION (RAILROAD)		PRIVATE UNIVERSITY/COLLEGE	
NORTHSTAR STATION (COMMERCE)		ELEMENTARY SCHOOL	
LIGHT RAIL		MIDDLE SCHOOL	
BLUE LINE STATION		HIGH SCHOOL	
GREEN LINE STATION		AVIATION FEATURES	
RAILROAD AND RAILWAY FEATURES		COMMERCIAL AIRPORT	
LONG BRIDGE (100' OR GREATER SPAN)		GENERAL AIRPORT	
MAJOR BRIDGE (20' TO 100' SPAN)		AIRSTRIP	
MINOR BRIDGE (UP TO 20' SPAN)		SEAPLANE	
ROAD TUNNEL (100' OR GREATER SPAN)		AIRPORT RUNWAY	
RAILROAD BRIDGE (100' OR GREATER SPAN)		CULTURAL FEATURES	
RAILROAD BRIDGE (UNDER 100' SPAN)		STATE HISTORICAL MARKER	
SKYWAY		HISTORIC DISTRICT	
PEDESTRIAN BRIDGE		HISTORIC SITE	
PEDESTRIAN TUNNEL		MONUMENT	
DAM		CEMETERY	
LOCK AND DAM		BOUNDARY FEATURES	
PUBLIC FACILITIES		TRIBAL LAND	
STATE CAPITOL		COUNTY	
FEDERAL COURTHOUSE		MUNICIPALITY	
COUNTY COURTHOUSE		ADJACENT MUNICIPALITY	
ARMORY		FEDERAL ADJUSTED URBAN AREA (2014)	
CITY HALL		MILITARY	
COMMUNITY CENTER		STATE PARK	
ARENA		REGIONAL PARK	
STADIUM		NATIONAL FOREST	
POST OFFICE		NATIONAL AND STATE FOREST	
POLICE STATION		STATE FOREST	
FIRE STATION		NATIONAL TRAIL	
PUBLIC LIBRARY		WILDLIFE REFUGE AREA	
PUBLIC MUSEUM		WILDLIFE MANAGEMENT AREA	
EVENT CENTER		HYDROLOGIC FEATURES	
CITY CENTERS		RIVER OR STREAM (PERMANENT)	
TRIBAL GOVERNMENT CENTER		LAKE, POND OR RESERVOIR	
CITY CENTER		STREAM (INTERMITTENT)	
LOCALLY KNOWN PLACE		DRAINAGE DITCH	
UNINCORPORATED COMMUNITY		WETLAND	
		ISLAND OR LAND	
		REGIONAL WATERSHED	



Population (U.S. Census 2020): 2388



To request information from this document in an alternative format, call 651-366-4718 or 1-800-657-3774 (Greater Minnesota); 711 or 1-800-627-3529 (Minnesota Relay). You may also send an e-mail to ADArequest.dot@state.mn.us. (Please request at least one week in advance.)

LAST EDITED ON 11-19-2024