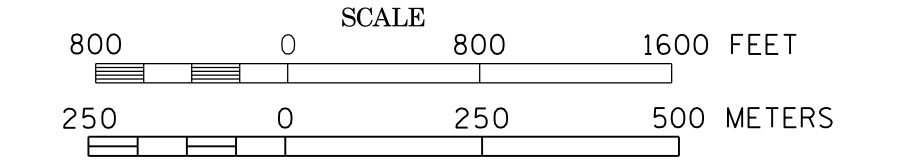
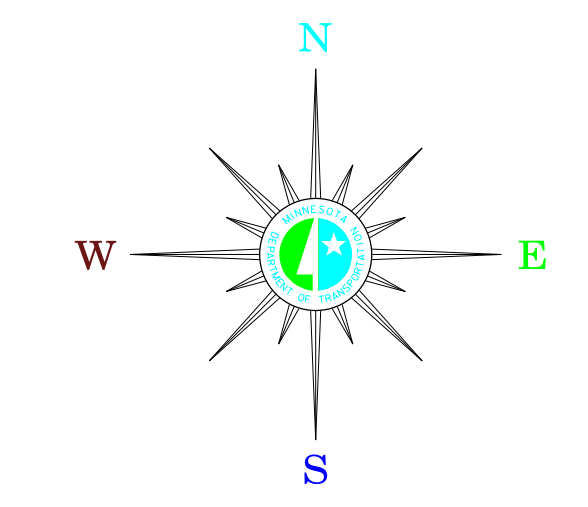


# MUNICIPALITIES OF MURRAY CO.

PREPARED BY THE  
MINNESOTA DEPARTMENT OF TRANSPORTATION  
OFFICE OF TRANSPORTATION SYSTEM MANAGEMENT  
IN COOPERATION WITH  
U.S. DEPARTMENT OF TRANSPORTATION  
FEDERAL HIGHWAY ADMINISTRATION

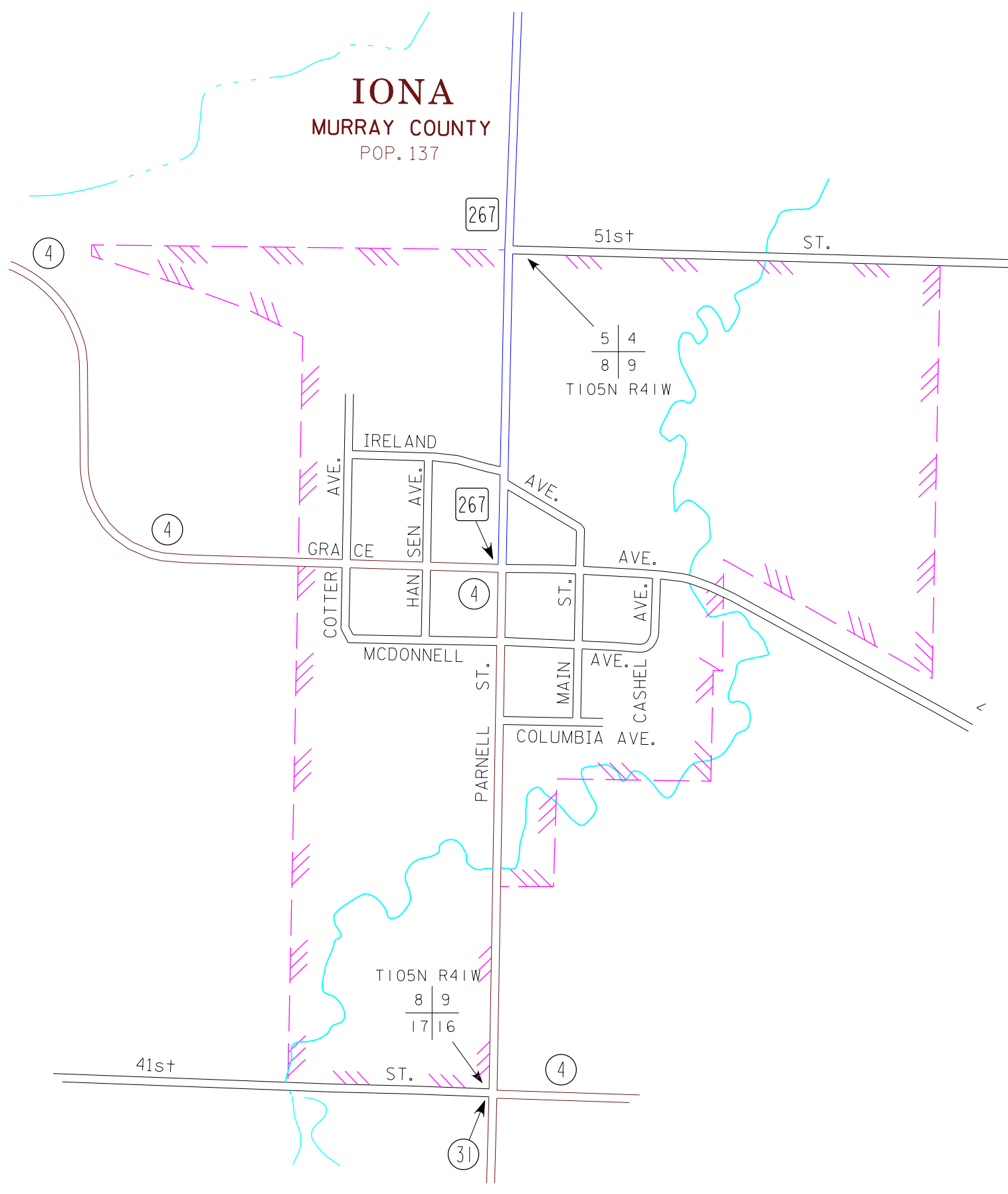
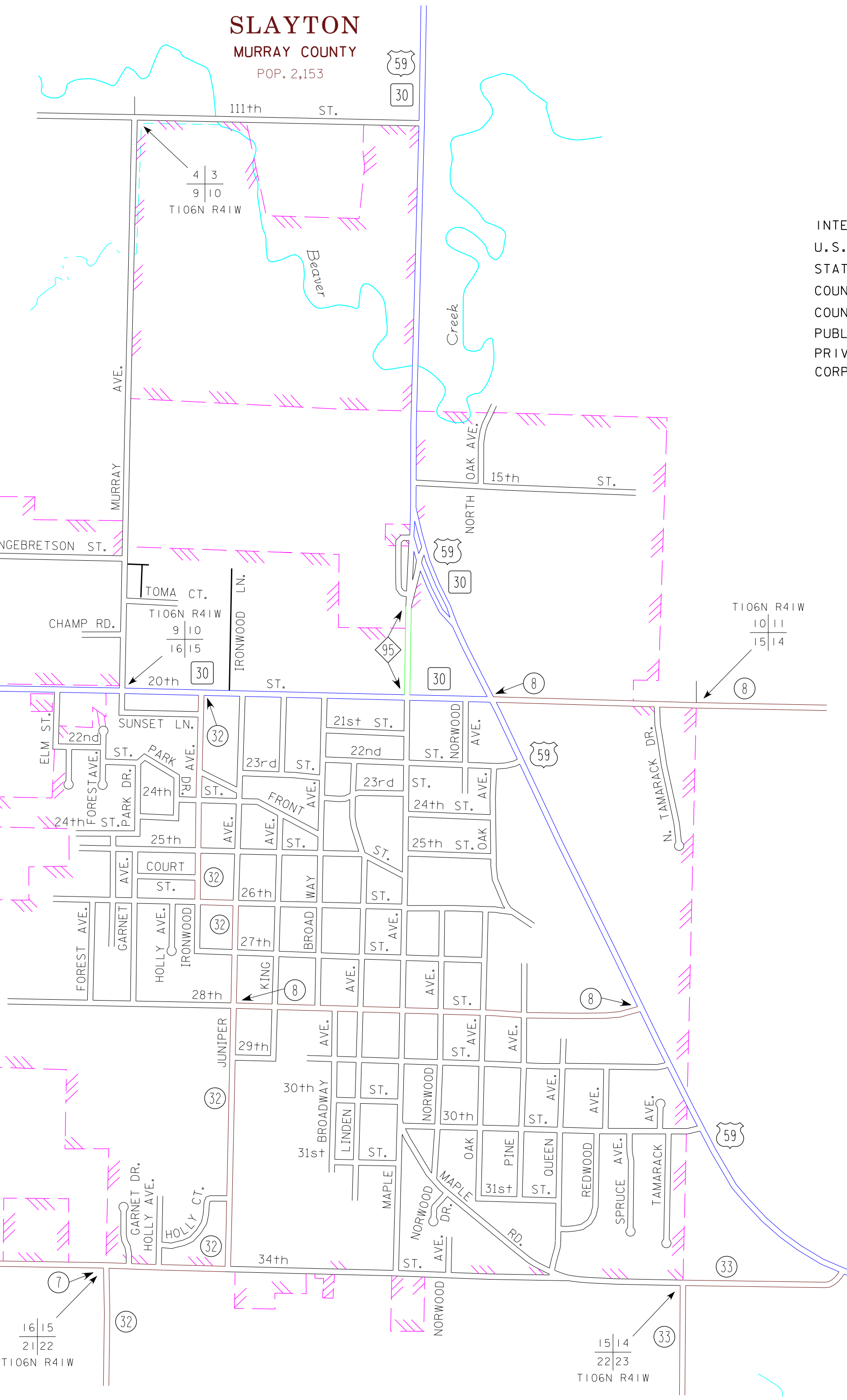
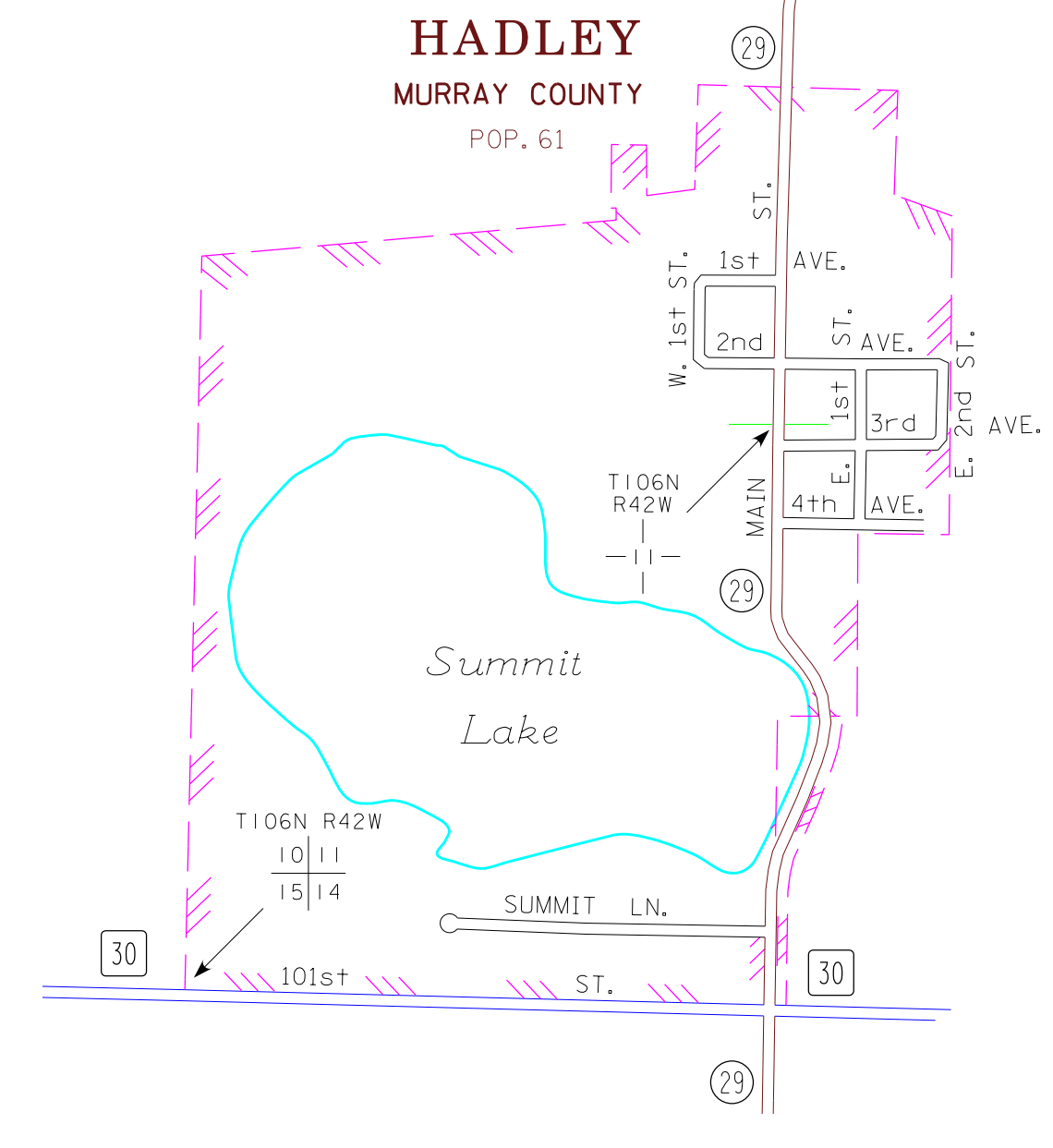
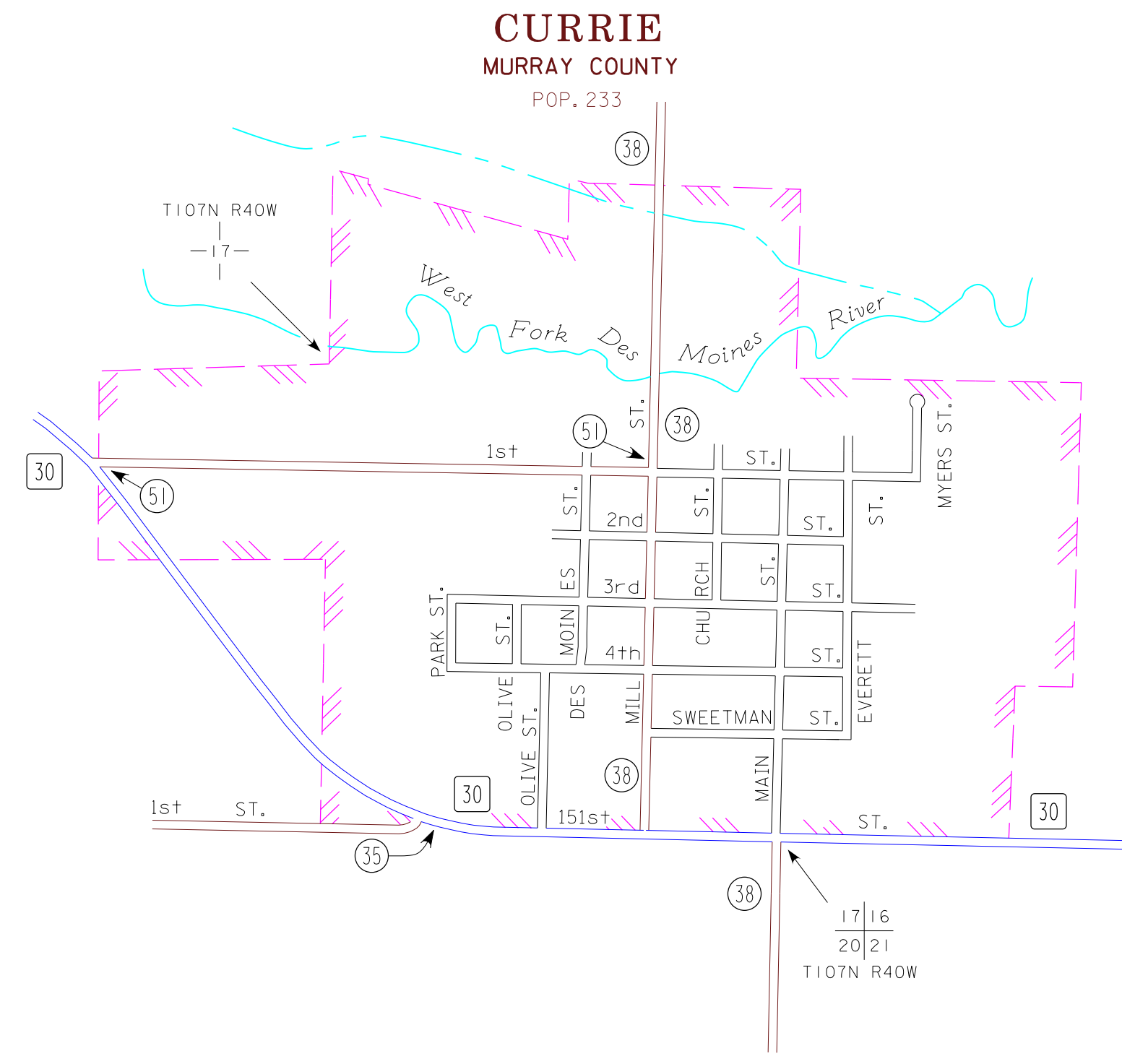


2015  
BASIC DATA - 2009



### LEGEND

- INTERSTATE TRUNK HIGHWAY..... (I-35)
- U.S. TRUNK HIGHWAY..... (US-59)
- STATE TRUNK HIGHWAY..... (ST-30)
- COUNTY STATE AID HIGHWAY..... (CSA-38)
- COUNTY ROAD..... (C-32)
- PUBLIC ROAD..... (P-4)
- PRIVATE ROAD..... (PR-16)
- CORPORATE LIMITS..... (Hatched lines)



MUNICIPALITIES SHOWN  
ON THIS SHEET  
CURRIE  
HADLEY  
IONA  
SLAYTON

To request information from this document in an alternative format, call 651-366-4718 or 1-800-657-3774 (Greater Minnesota); 711 or 1-800-627-3529 (Minnesota Relay). You may also send an e-mail to ADARequest.dca@state.mn.us. (Please request at least one week in advance).

NOTE: 2010 U.S. CENSUS FIGURES SHOWN FOR ALL MUNICIPALITIES UNLESS OTHERWISE STATED.