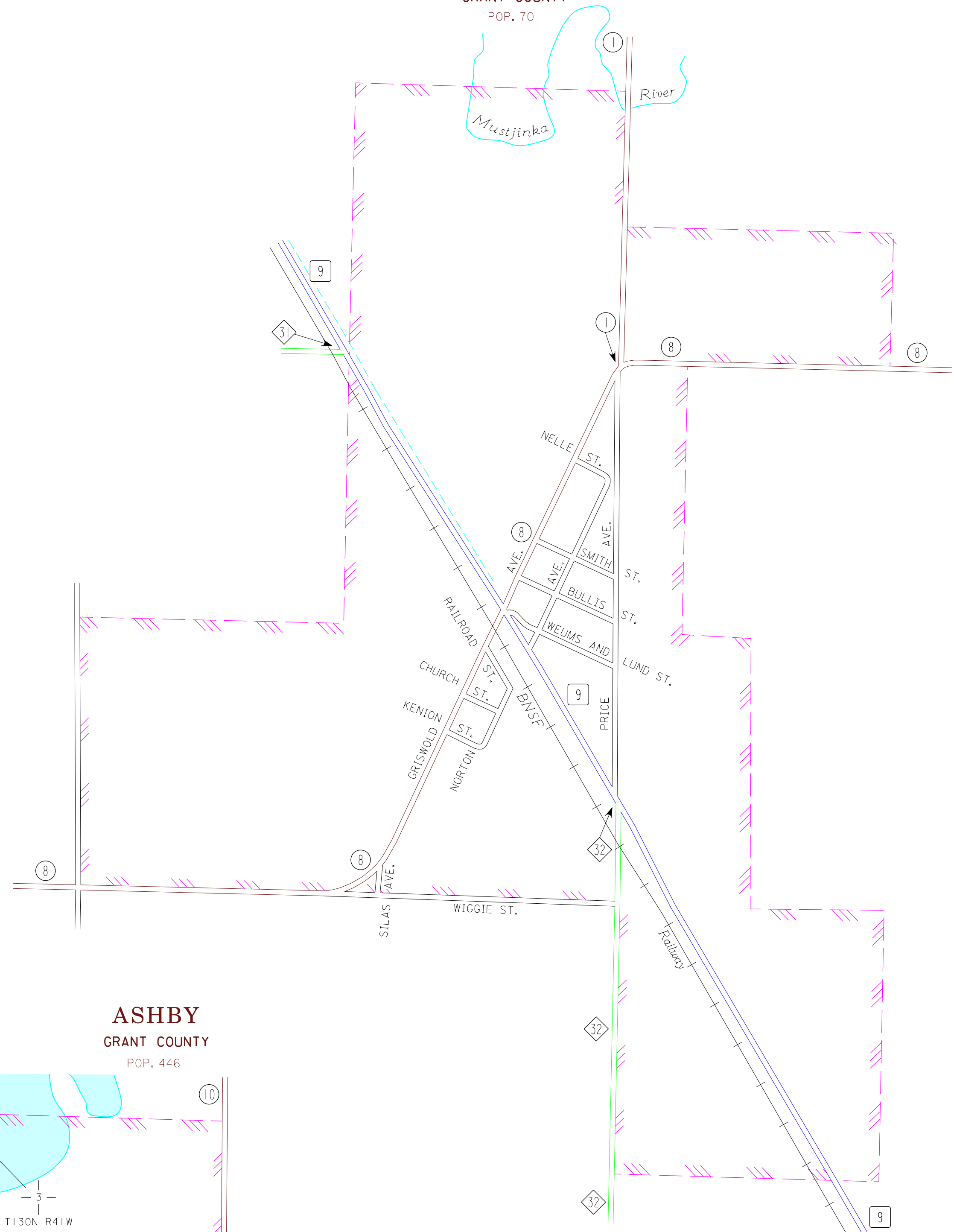
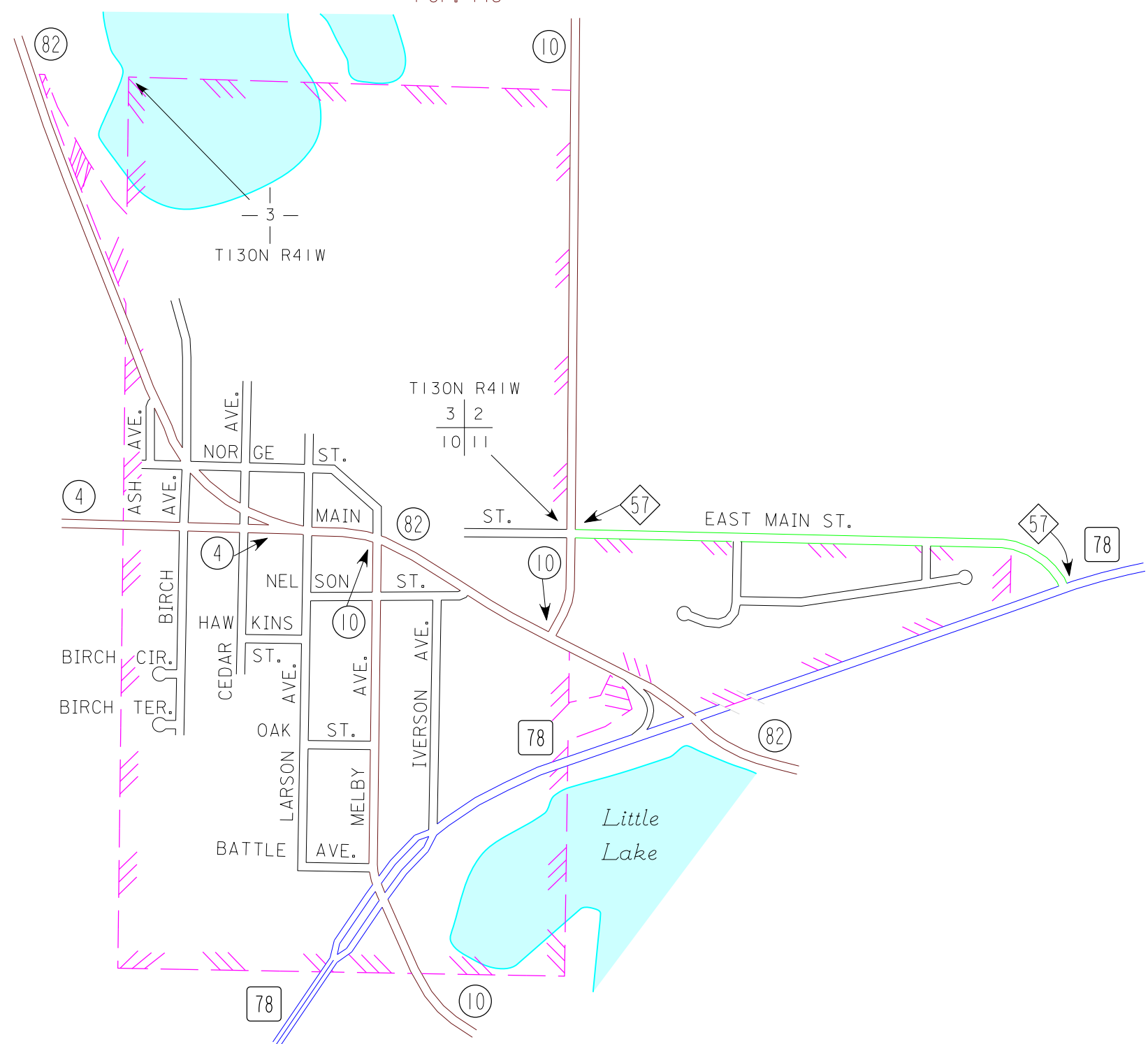


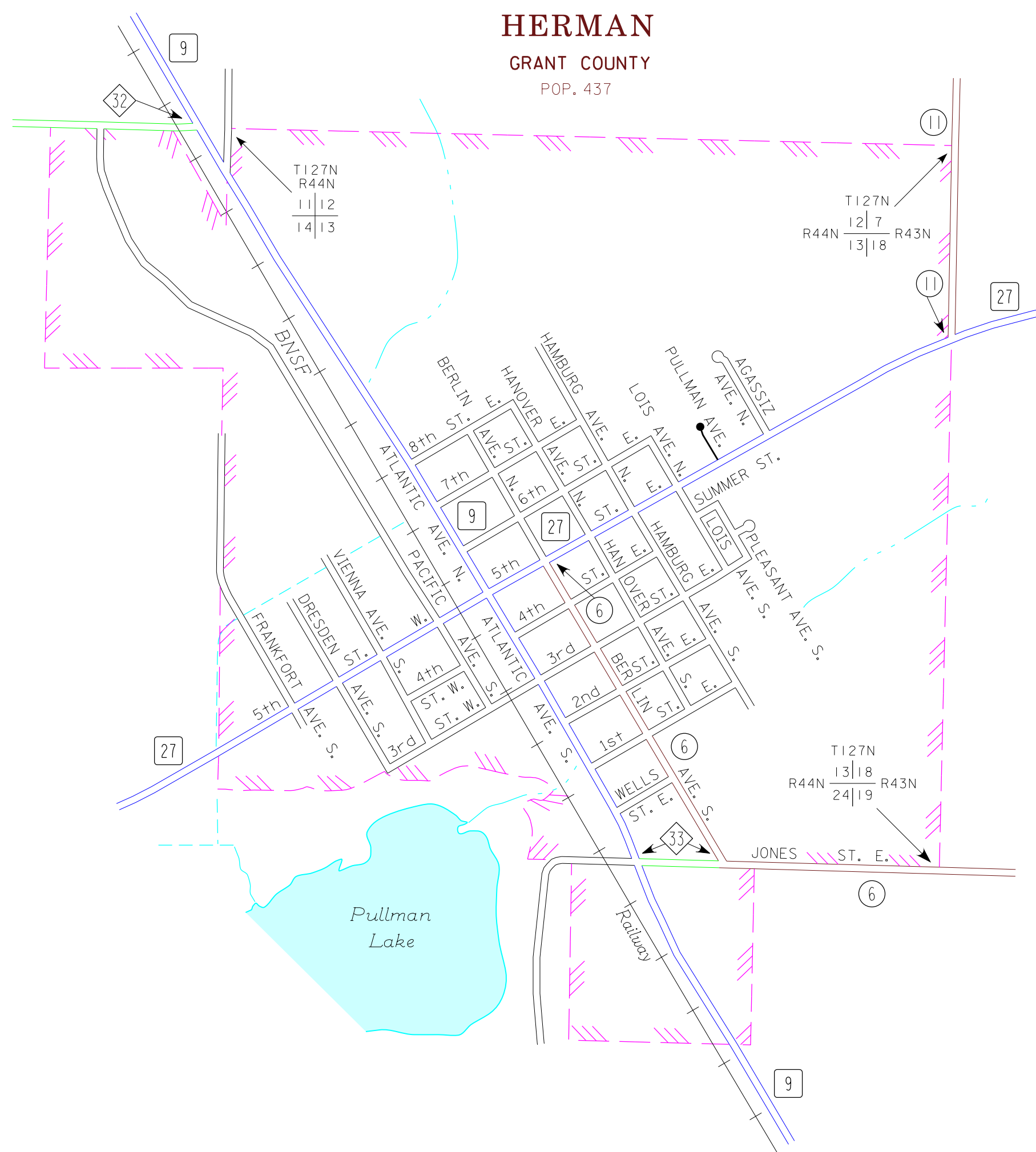
NORCROSS
GRANT COUNTY
POP. 70



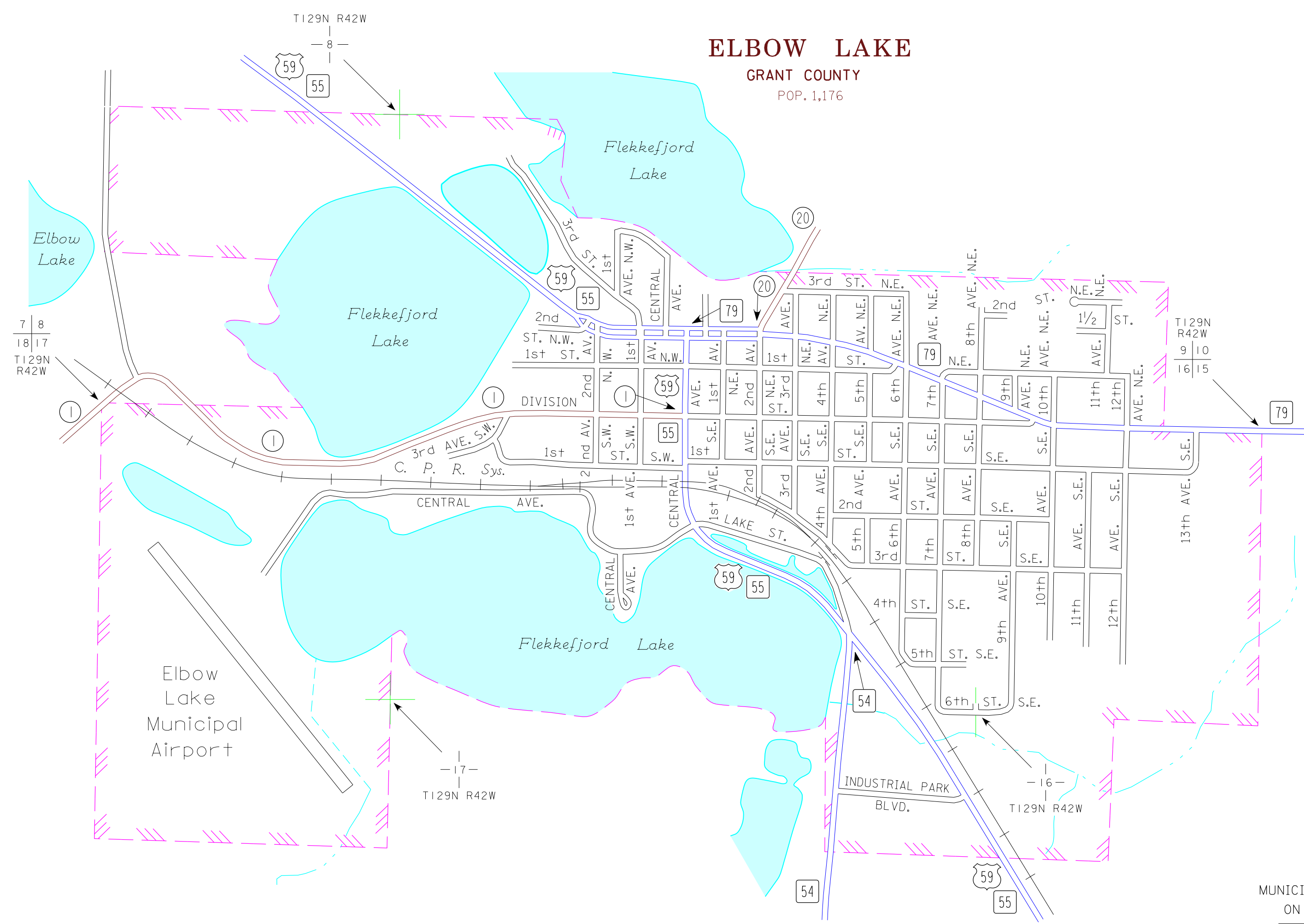
ASHBY
GRANT COUNTY
POP. 446



HERMAN
GRANT COUNTY
POP. 437

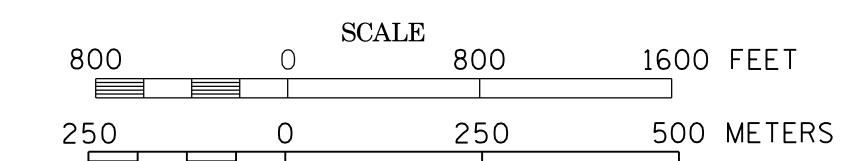


ELBOW LAKE
GRANT COUNTY
POP. 1,176



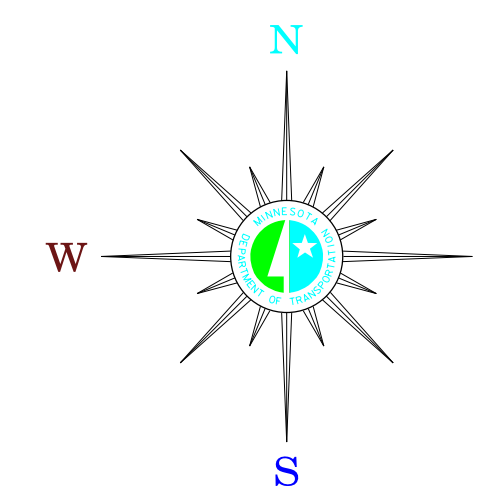
MUNICIPALITIES OF GRANT CO.

PREPARED BY THE
MINNESOTA DEPARTMENT OF TRANSPORTATION
OFFICE OF TRANSPORTATION SYSTEM MANAGEMENT
IN COOPERATION WITH
U.S. DEPARTMENT OF TRANSPORTATION
FEDERAL HIGHWAY ADMINISTRATION



2015

BASIC DATA - 2013



LEGEND

- INTERSTATE TRUNK HIGHWAY..... (I-35)
- U.S. TRUNK HIGHWAY..... (US-70)
- STATE TRUNK HIGHWAY..... (ST-55)
- COUNTY STATE AID HIGHWAY..... (CSA-23)
- COUNTY ROAD..... (C-15)
- PUBLIC ROAD.....
- PRIVATE ROAD.....
- CORPORATE LIMITS.....

MUNICIPALITIES SHOWN ON THIS SHEET

- ASHBY
- ELBOW LAKE
- HERMAN
- NORCROSS

To request information from this document in an alternative format, call 651-366-4718 or 1-800-657-3774 (Greater Minnesota); 711 or 1-800-627-3529 (Minnesota Relay). You may also send an e-mail to ADRrequest.dot@state.mn.us. (Please request at least one week in advance).

NOTE: 2010 U.S. CENSUS FIGURES SHOWN FOR ALL MUNICIPALITIES UNLESS OTHERWISE STATED.