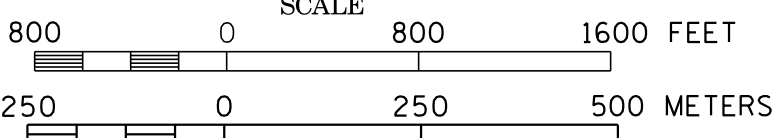
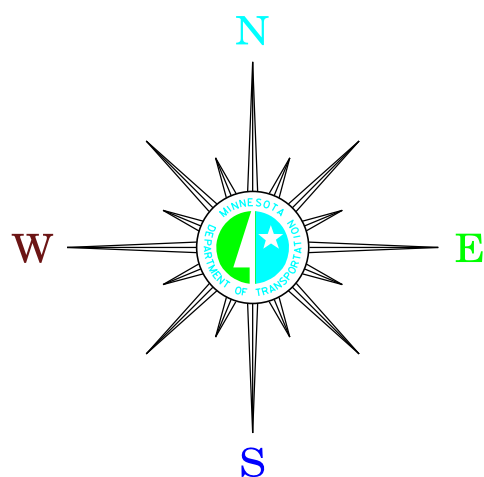


MUNICIPALITIES OF
DOUGLAS CO.

PREPARED BY THE
MINNESOTA DEPARTMENT OF TRANSPORTATION
OFFICE OF TRANSPORTATION SYSTEM MANAGEMENT
IN COOPERATION WITH
U.S. DEPARTMENT OF TRANSPORTATION
FEDERAL HIGHWAY ADMINISTRATION



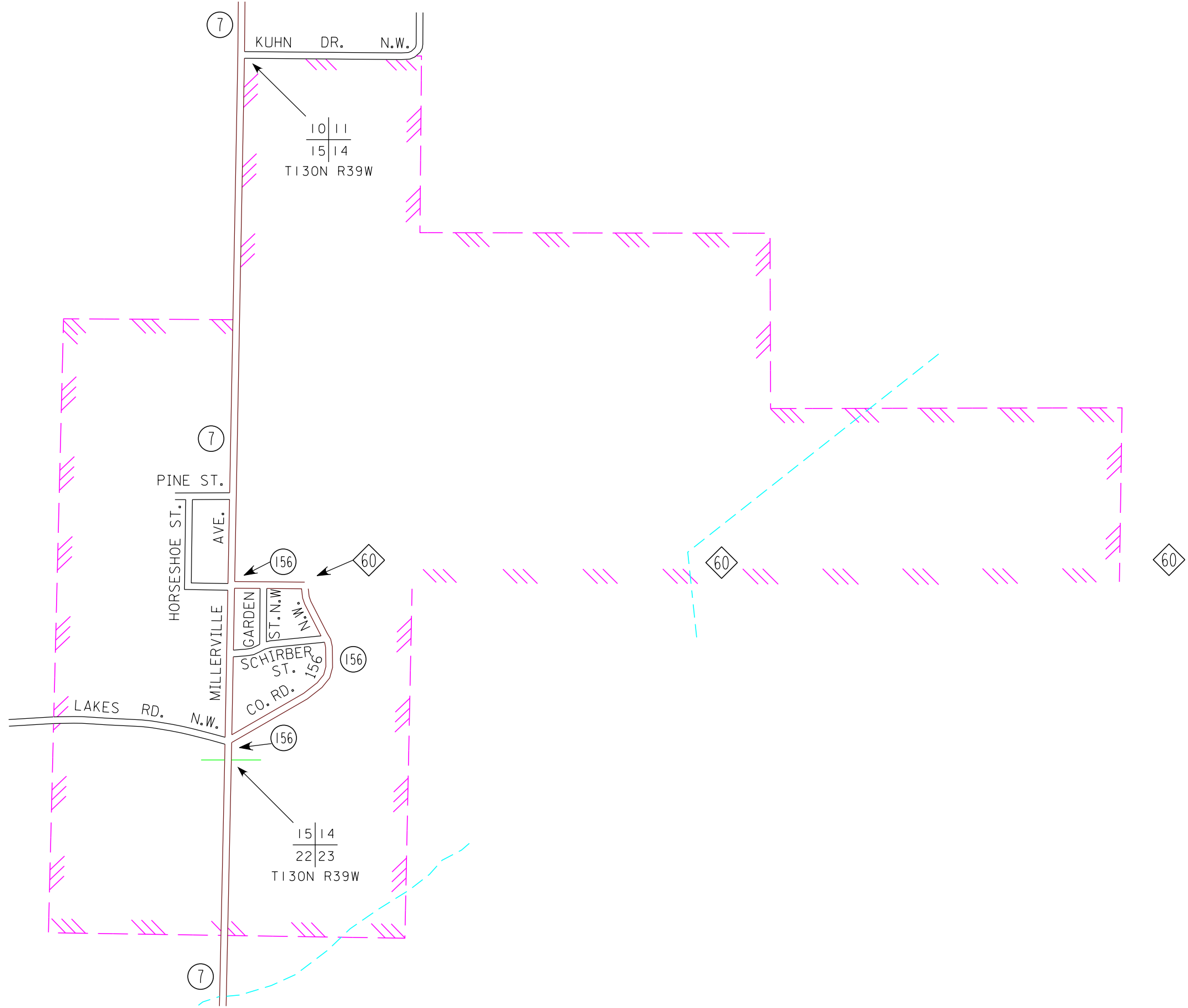
2015
BASIC DATA - 2013



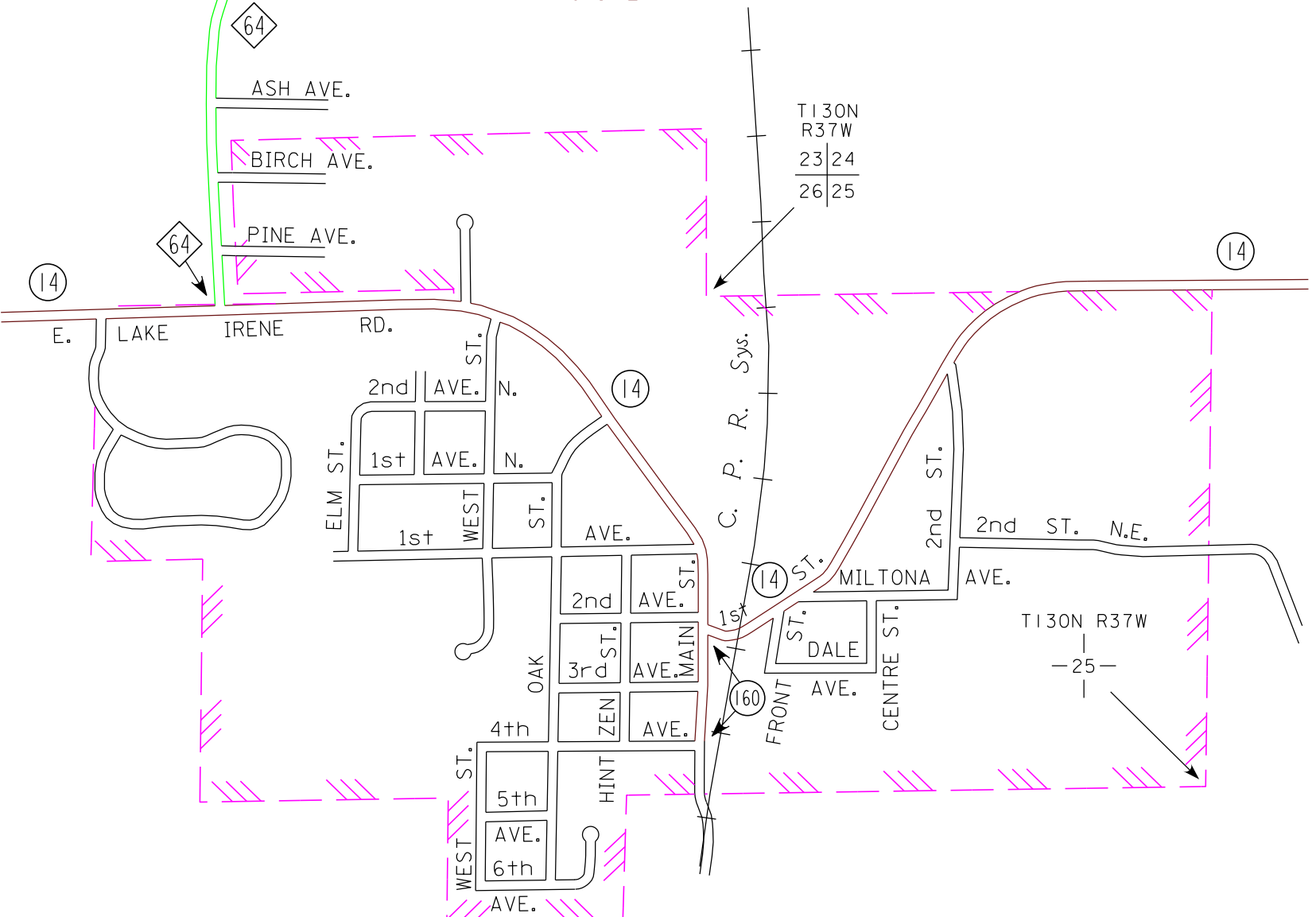
LEGEND

- INTERSTATE TRUNK HIGHWAY..... (35)
- U.S. TRUNK HIGHWAY..... (10)
- STATE TRUNK HIGHWAY..... (55)
- COUNTY STATE AID HIGHWAY..... (23)
- COUNTY ROAD..... (15)
- PUBLIC ROAD.....
- PRIVATE ROAD.....
- CORPORATE LIMITS.....

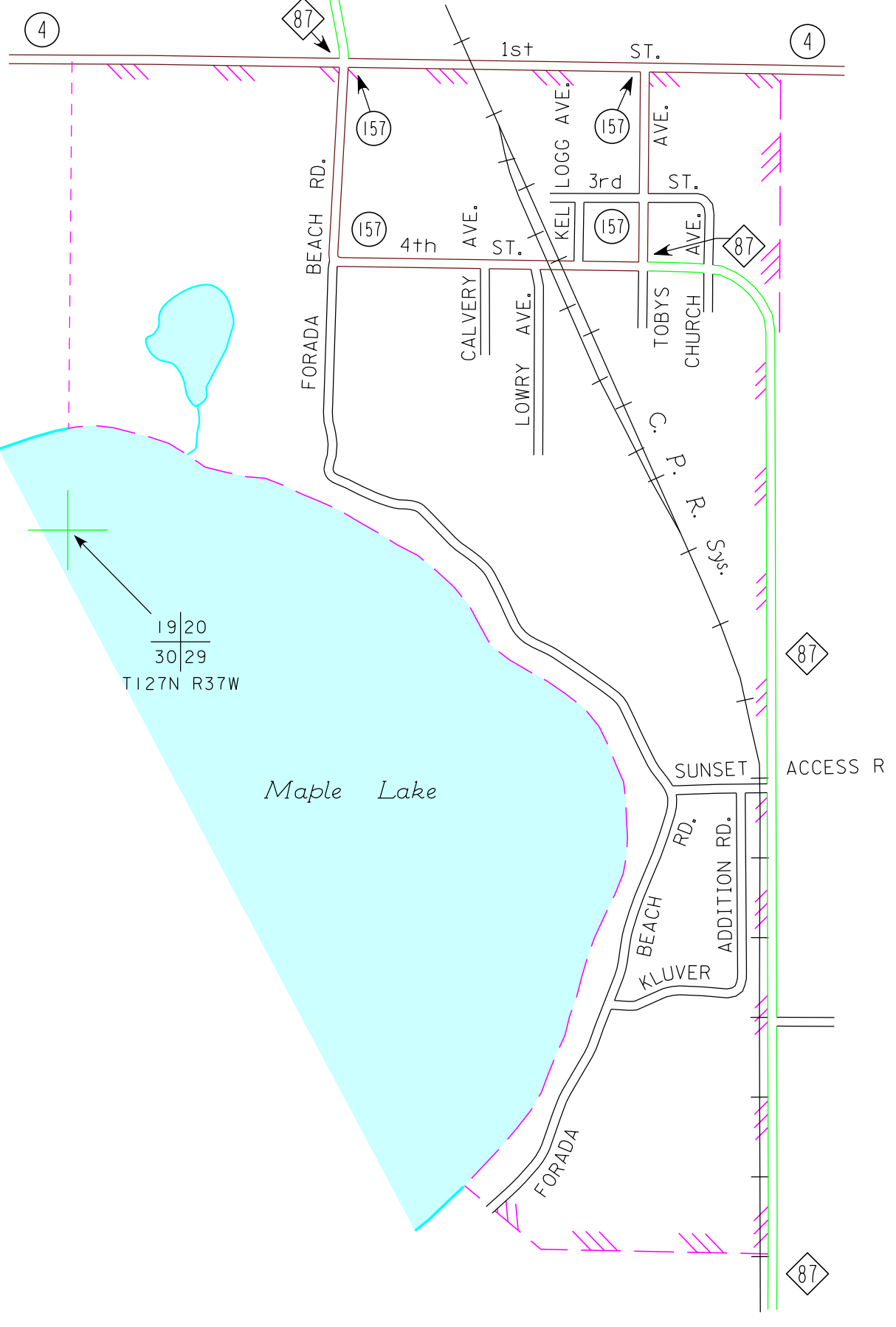
MILLERVILLE
DOUGLAS COUNTY
POP. 106



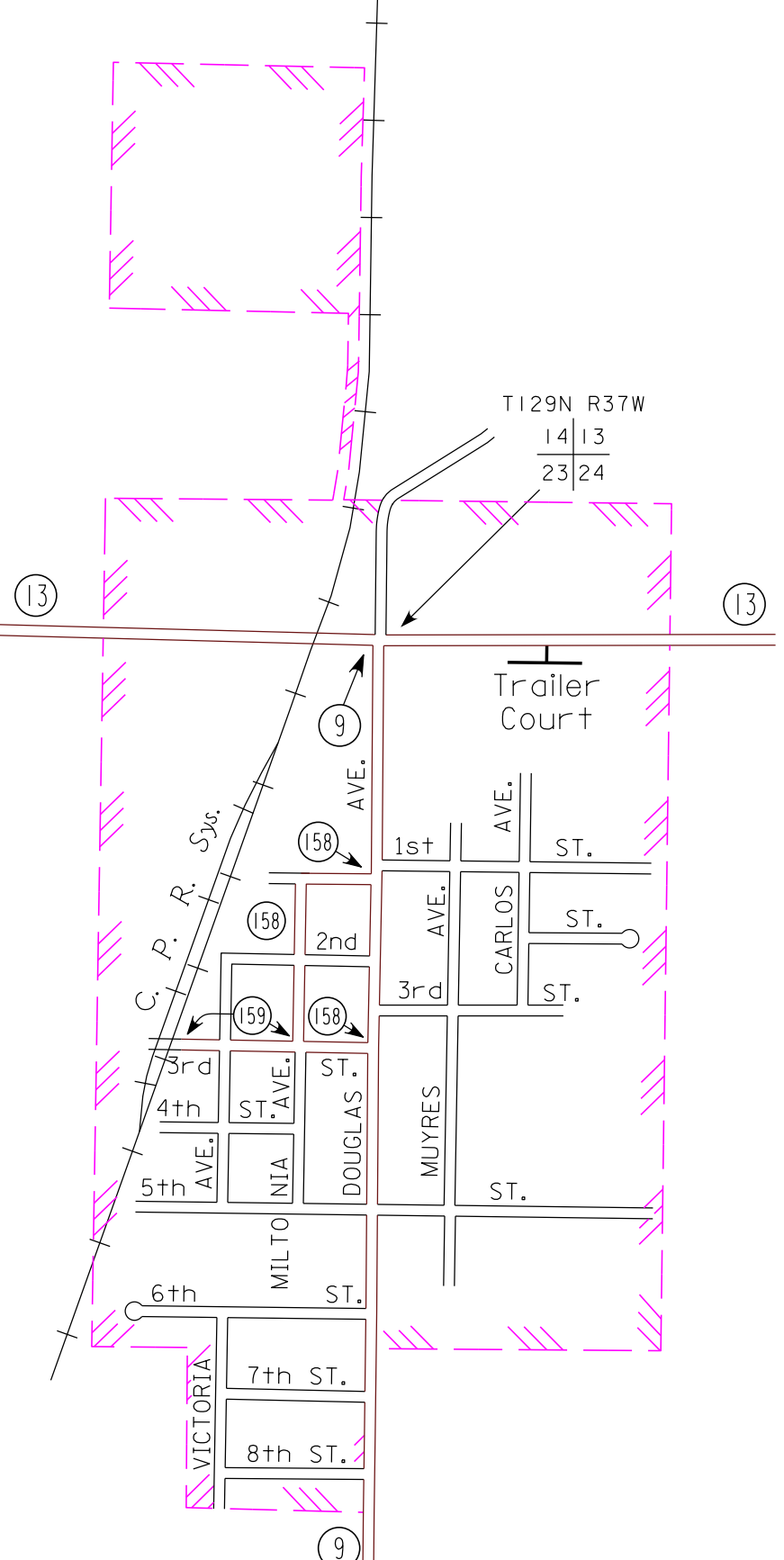
MILTONA
DOUGLAS COUNTY
POP. 424



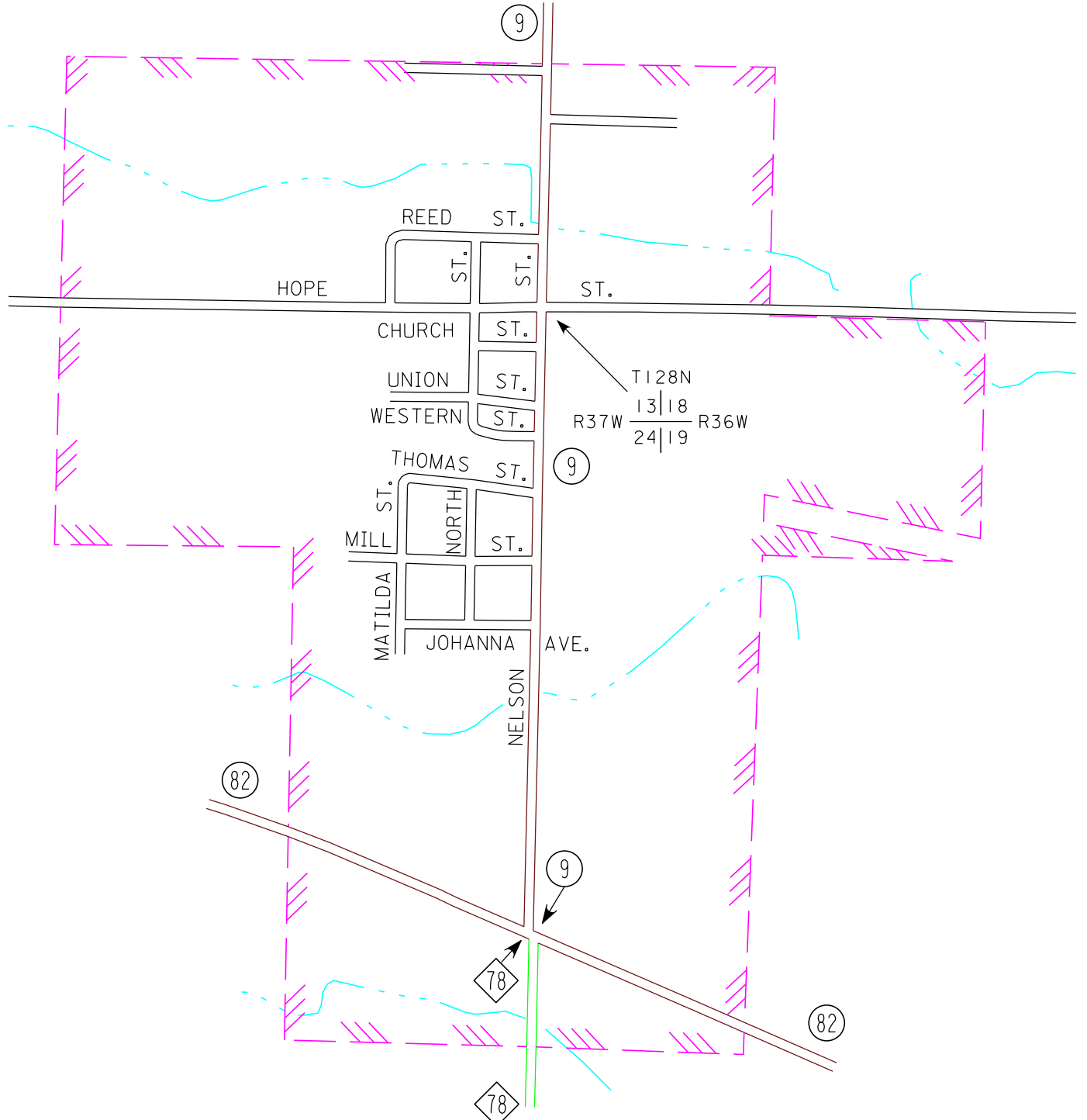
FORADA
DOUGLAS COUNTY
POP. 185



CARLOS
DOUGLAS COUNTY
POP. 502



NELSON
DOUGLAS COUNTY
POP. 187



- MUNICIPALITIES SHOWN
ON THIS SHEET
- CARLOS
 - FORADA
 - MILLERVILLE
 - MILTONA
 - NELSON

To request information from this document in an alternative format, call 651-366-4718 or 1-800-657-3774 (Greater Minnesota); 711 or 1-800-627-3529 (Minnesota Relay). You may also send an e-mail to: ADArequest.dca@state.mn.us (Please request at least one week in advance).

NOTE: 2010 U.S. CENSUS FIGURES SHOWN FOR ALL MUNICIPALITIES UNLESS OTHERWISE STATED.