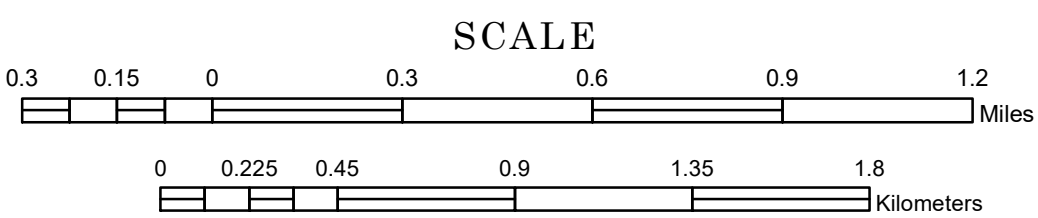


# MUNICIPALITY OF EMPIRE

PREPARED BY THE  
MINNESOTA DEPARTMENT OF TRANSPORTATION  
OFFICE OF TRANSPORTATION SYSTEM MANAGEMENT

IN COOPERATION WITH  
U.S. DEPARTMENT OF TRANSPORTATION  
FEDERAL HIGHWAY ADMINISTRATION



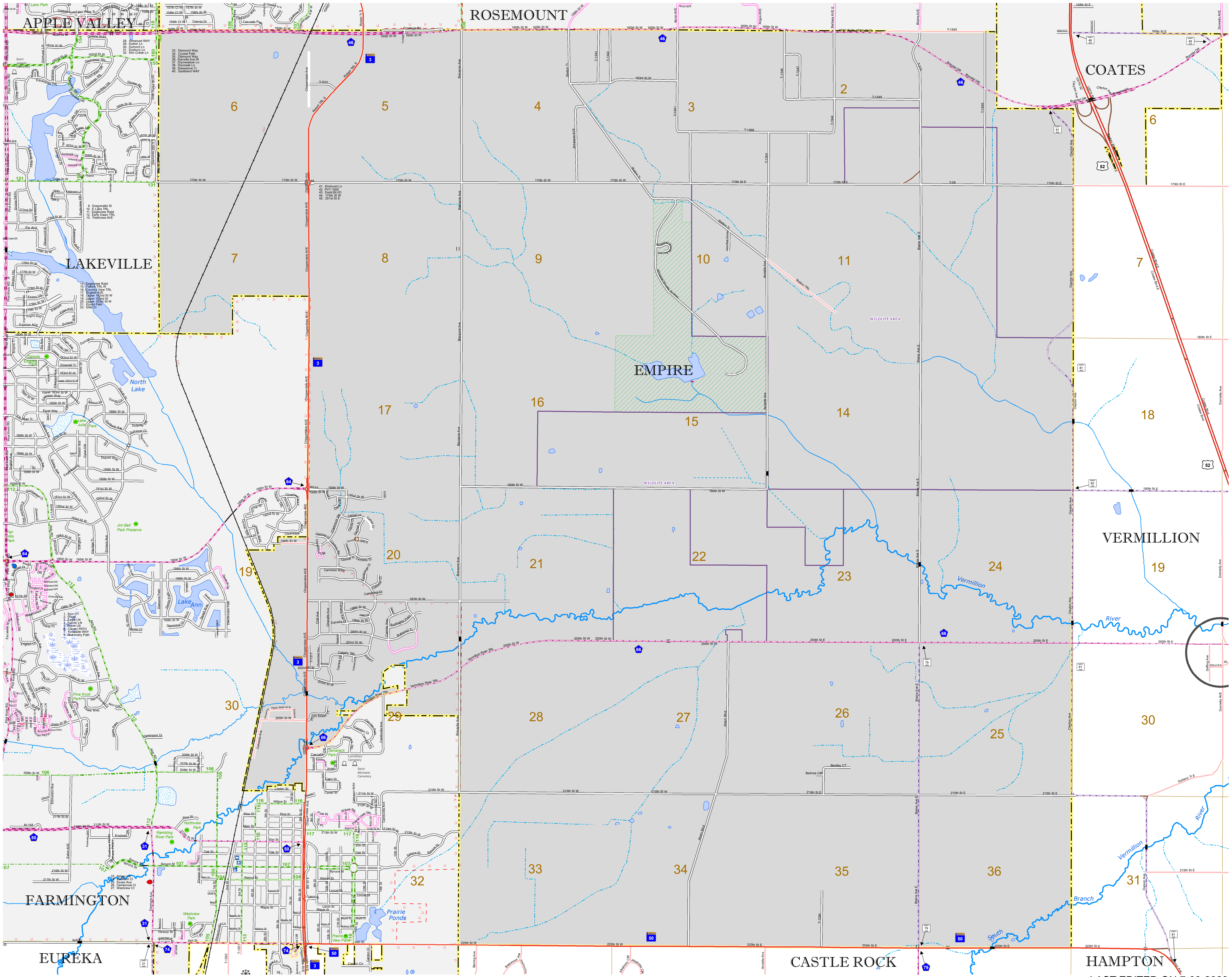
1 in = 1,600 ft

2023

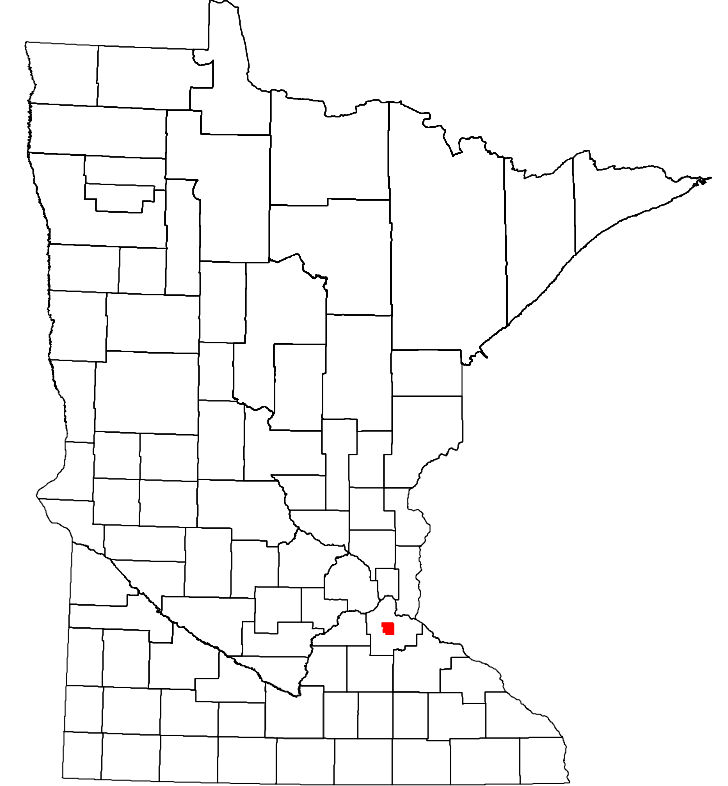
Projection:  
Transverse Mercator  
NAD 1986  
UTM Zone 15



North American Datum  
of 1986



ROAD AND ROADWAY FEATURES	PUBLIC SERVICE FEATURES
INTERSTATE	MINIOT OFFICE
US HIGHWAY	MINIOT TRUCK STATION
MIN HIGHWAY	HIGHWAY PATROL DISTRICT OFFICE
COUNTY STATE AID HIGHWAY	STATE TRAVEL INFORMATION CENTER
COUNTY ROAD	REST AREA (FULL SERVICE)
MUNICIPAL STREET	REST AREA (VAULT TRAILS)
MUNICIPAL STATE AID STREET	WAYSIDE (VAULT OR PIT TOL)
PRIVATE STREET/ROAD	PUBLIC ACCESS POINT
TOWNSHIP ROAD	LOCAL PARK
UNORGANIZED TERRITORY ROAD	FAIRGROUNDS
RAMP OR CONNECTOR	PORT OF ENTRY
INTERSTATE EXIT	PARK AND RIDE LOT
GREAT RIVER ROAD	PUBLIC UNIVERSITY/COLLEGE
OTHER ROAD	PRIVATE UNIVERSITY/COLLEGE
FRONTAGE	NATIONAL PARK
LOCAL SERVICE	NATIONAL MONUMENT
MUNICIPAL	NATIONAL FOREST
	NATIONAL WILDLIFE SHREVE CARE
RAILROAD AND RAILWAY FEATURES	AVIATION FEATURES
RAILROAD	COMMERCIAL AIRPORT
EMPIRE BUILDER STATION (AMTRAK)	GENERAL AIRPORT
NORTHSTAR STATION (COMMUTER)	AIRSTRIP
LIGHT RAIL	SEAPLANE
BLUE LINE STATION	AIRPORT RUNWAY
GREEN LINE STATION	CULTURAL FEATURES
INFRASTRUCTURE FEATURES	STATE HISTORICAL MARKER
LONG BRIDGE (100' OR GREATER SPAN)	HISTORIC DISTRICT
MAJOR BRIDGE (20' TO 100' SPAN)	HISTORIC SITE
MINOR BRIDGE (5' TO 20' SPAN)	MONUMENT
ROAD TUNNEL (100' OR GREATER SPAN)	CEMETERY
RAILROAD BRIDGE (100' OR GREATER SPAN)	
RAILROAD BRIDGE (UNDER 100' SPAN)	BOUNDARY FEATURES
SKYWAY	TRIBAL LAND
PEDESTRIAN BRIDGE	COUNTY
PEDESTRIAN TUNNEL	MUNICIPALITY
DAM	ADJACENT MUNICIPALITY
LOCK AND DAM	FEDERAL ADJUSTED URBAN AREA (2014)
PUBLIC FACILITIES	MILITARY
STATE CAPITOL	STATE PARK
FEDERAL COURTHOUSE	REGIONAL PARK
COUNTY COURTHOUSE	NATIONAL FOREST
ARMORY	NATIONAL AND STATE FOREST
CITY HALL	STATE FOREST
TOWN HALL	NATIONAL TRAIL
COMMUNITY CENTER	WILDLIFE REFUGUE AREA
ARENA	WILDLIFE MANAGEMENT AREA
STADIUM	
POST OFFICE	HYDROLOGIC FEATURES
POLICE STATION	RIVER OR STREAM (PERENNIAL)
FIRE STATION	LAKE, POND OR RESERVOIR
PUBLIC LIBRARY	STREAM (PERMANENT)
PUBLIC MUSEUM	DRAINAGE DITCH
EVENT CENTER	WETLAND
	ISLAND OR LAND
	REGIONAL WATERSHED
CITY CENTERS	
TRIBAL GOVERNMENT CENTER	
CITY CENTER	
LOCALLY KNOWN PLACE	
UNINCORPORATED COMMUNITY	



Population (U.S. Census 2020): 3,177

To request information from this document in an alternative format, call 651-366-4718 or 1-800-657-3774 (Greater Minnesota); 711 or 1-800-627-3529 (Minnesota Relay). You may also send an e-mail to ADRequest.dot@state.mn.us. (Please request at least one week in advance.)