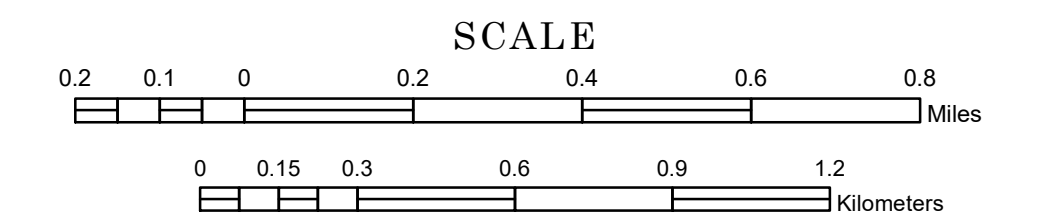


# MUNICIPALITY OF ORTONVILLE

PREPARED BY THE  
MINNESOTA DEPARTMENT OF TRANSPORTATION  
OFFICE OF TRANSPORTATION SYSTEM MANAGEMENT

IN COOPERATION WITH  
U.S. DEPARTMENT OF TRANSPORTATION  
FEDERAL HIGHWAY ADMINISTRATION

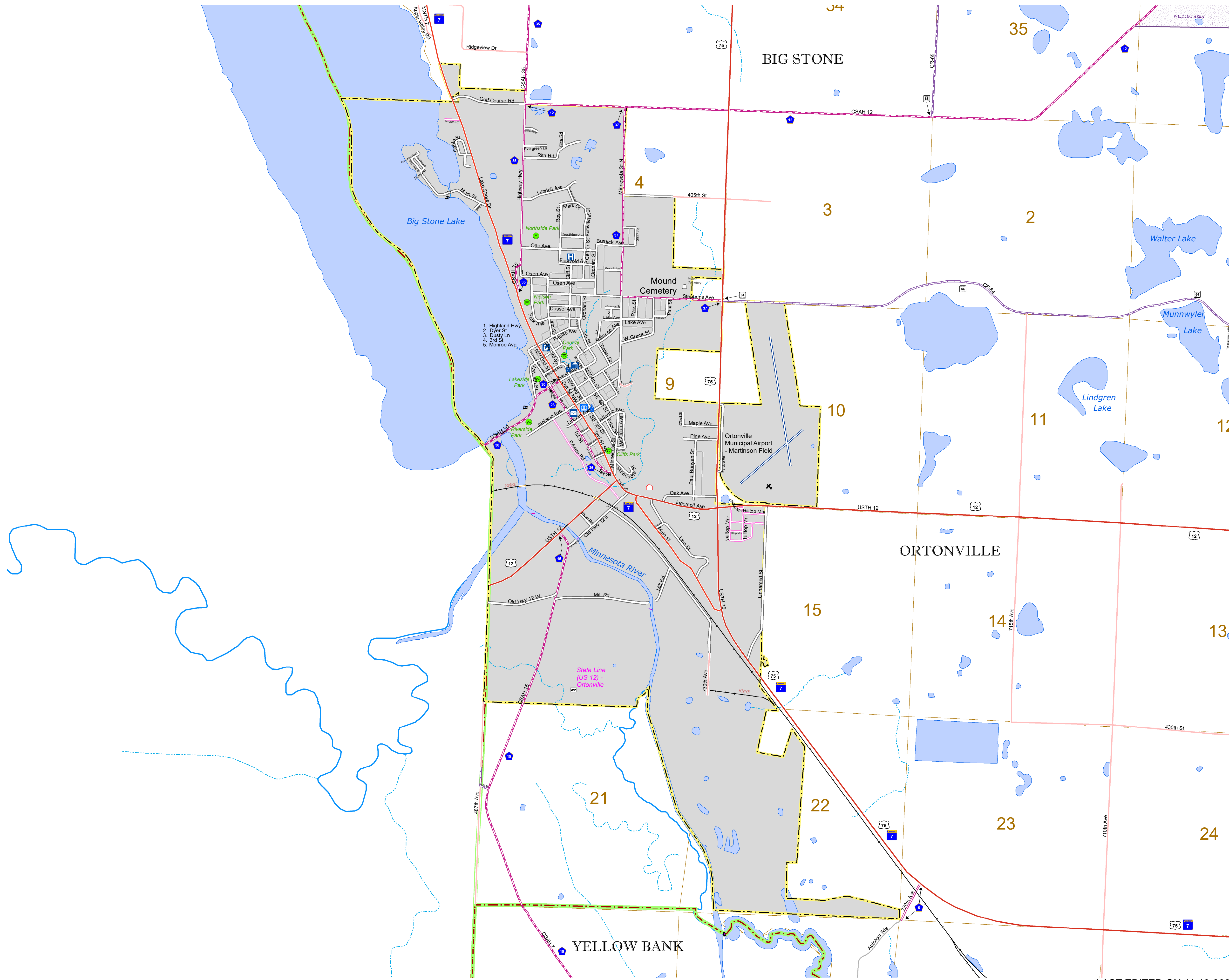


1 in = 1,200 ft  
**2024**

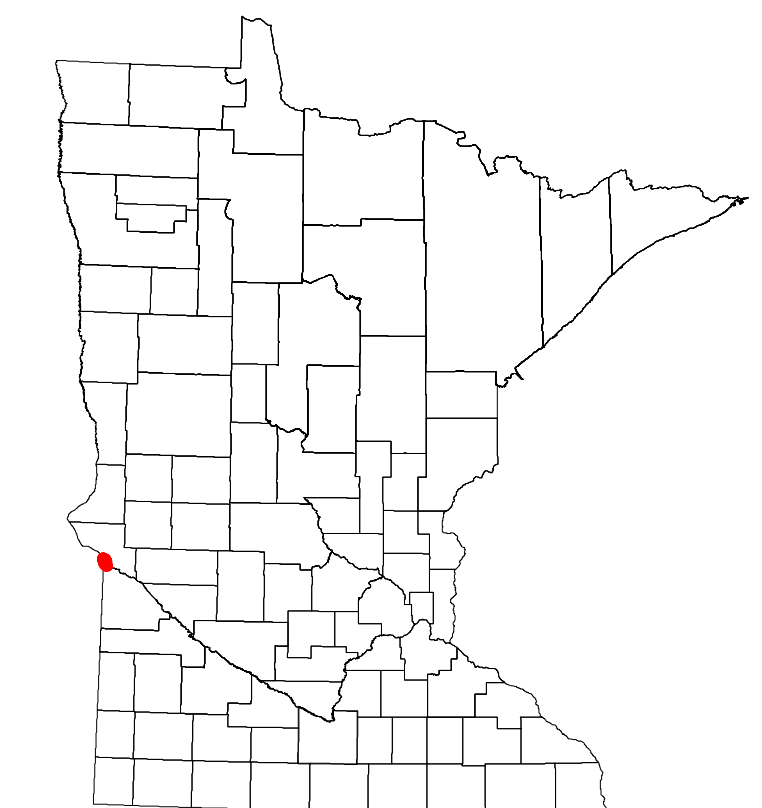
Projection:  
Transverse Mercator  
NAD 1986  
UTM Zone 15



North American Datum  
of 1986



| ROAD AND ROADWAY FEATURES              | PUBLIC SERVICE FEATURES            |
|--|------------------------------------|
| INTERSTATE                             | MINDOT OFFICE                      |
| US HIGHWAY                             | MINDOT TRUCK STATION               |
| STATE HIGHWAY                          | HIGHWAY PATROL DISTRICT OFFICE     |
| COUNTY STATE AID HIGHWAY               | STATE TRAVEL INFORMATION CENTER    |
| COUNTY ROAD                            | REST AREA (Full Service)           |
| MUNICIPAL STREET                       | REST AREA (Quick Turn)             |
| MUNICIPAL STATE AID STREET             | WAYSIDE (Only on Pkwy/Trk)         |
| PRIVATE STREET/ROAD                    | PUBLIC ACCESS POINT                |
| TOWNSHIP ROAD                          | LOCAL PARK                         |
| UNORGANIZED TERRITORY ROAD             | FARMSHOULDS                        |
| RAILROAD CONNECTOR                     | PORT OF ENTRY                      |
| INTERSTATE EXIT                        | PARK AND RIDE LOT                  |
| GREAT RIVER ROAD                       | PUBLIC UNIVERSITY/COLLEGE          |
| OTHER ROADS                            | PRIVATE UNIVERSITY/COLLEGE         |
| FARMROAD                               | ELEMENTARY SCHOOL                  |
| INDUS. SERVICE                         | MIDDLE SCHOOL                      |
| MILITARY                               | NATIONAL FOREST                    |
|  | STATE GAME                         |
|  | HIGH SCHOOL                        |
| RAILROAD AND RAILWAY FEATURES          | AVIATION FEATURES                  |
| RAILROAD                               | COMMERCIAL AIRPORT                 |
| EMPIRE BUILDER STATION (ARTHWK)        | GENERAL AIRPORT                    |
| NORTHSTAR STATION (COMMUTER)           | AIRSTRIP                           |
| LIGHT RAIL                             | SEAPLANE                           |
| BLUE LINE STATION                      | AIRPORT RUNWAY                     |
| GREEN LINE STATION                     |                                    |
| INFRASTRUCTURE FEATURES                | CULTURAL FEATURES                  |
| LONG BRIDGE (100' OR GREATER SPAN)     | STATE HISTORICAL MARKER            |
| MAJOR BRIDGE (20' TO 100' SPAN)        | HISTORIC DISTRICT                  |
| MINOR BRIDGE (2' TO 20' SPAN)          | HISTORIC SITE                      |
| ROAD TUNNEL (100' OR GREATER SPAN)     | MONUMENT                           |
| RAILROAD BRIDGE (100' OR GREATER SPAN) | CEMETERY                           |
| RAILROAD BRIDGE (LESSER 100' SPAN)     |                                    |
| SKYWAY                                 | BOUNDARY FEATURES                  |
| PEDESTRIAN BRIDGE                      | TRIBAL LAND                        |
| PEDESTRIAN TUNNEL                      | COUNTY                             |
| DAM                                    | MUNICIPALITY                       |
| LOCK AND DAM                           | ADJACENT MUNICIPALITY              |
|  | FEDERAL ADJUSTED URBAN AREA (2014) |
| PUBLIC FACILITIES                      | MILITARY                           |
| STATE CAPITOL                          | STATE PARK                         |
| FEDERAL COURTHOUSE                     | REGIONAL PARK                      |
| COUNTY COURTHOUSE                      | NATIONAL FOREST                    |
| ARMORY                                 | NATIONAL AND STATE FOREST          |
| CITY HALL                              | STATE FOREST                       |
| TOWN HALL                              | NATIONAL TRAIL                     |
| COMMUNITY CENTER                       | WILDLIFE REFUGE AREA               |
| ARENA                                  | WILDLIFE MANAGEMENT AREA           |
| STADIUM                                |                                    |
| POST OFFICE                            | HYDROLOGIC FEATURES                |
| POLICE STATION                         | RIVER OR STREAM (PERENNIAL)        |
| FIRE STATION                           | LAKE, POND OR RESERVOIR            |
| PUBLIC LIBRARY                         | STREAM (PERENNIAL)                 |
| PUBLIC MUSEUM                          | STREAM (INTERMITTENT)              |
| EVENT CENTER                           | DRAINAGE DITCH                     |
|  | WETLAND                            |
| CITY CENTERS                           | ISLAND OR LAND                     |
| TRIBAL GOVERNMENT CENTER               | REGIONAL WATERSHED                 |
| CITY CENTER                            |                                    |
| LOCALLY INCORPORATED PLACE             |                                    |
| UNINCORPORATED COMMUNITY               |                                    |



Population (U.S. Census 2020): 2021

To request information from this document in an alternative format, call 651-366-4718 or 1-800-657-3774 (Greater Minnesota); 711 or 1-800-627-3529 (Minnesota Relay). You may also send an e-mail to ADarequest.dot@state.mn.us. (Please request at least one week in advance.)

LAST EDITED ON 11-19-2024