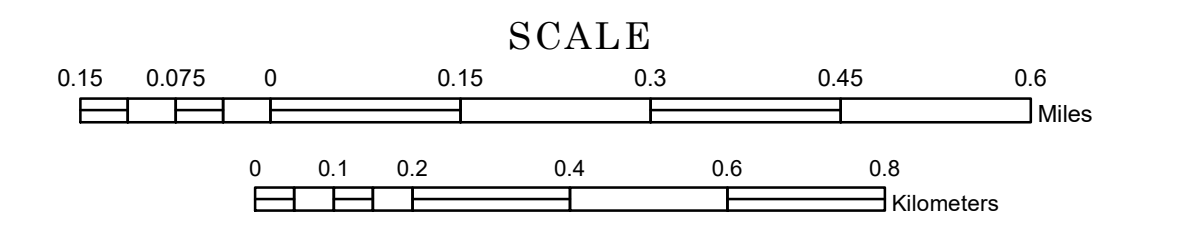


# MUNICIPALITY OF WILTON

PREPARED BY THE  
MINNESOTA DEPARTMENT OF TRANSPORTATION  
OFFICE OF TRANSPORTATION SYSTEM MANAGEMENT

IN COOPERATION WITH  
U.S. DEPARTMENT OF TRANSPORTATION  
FEDERAL HIGHWAY ADMINISTRATION



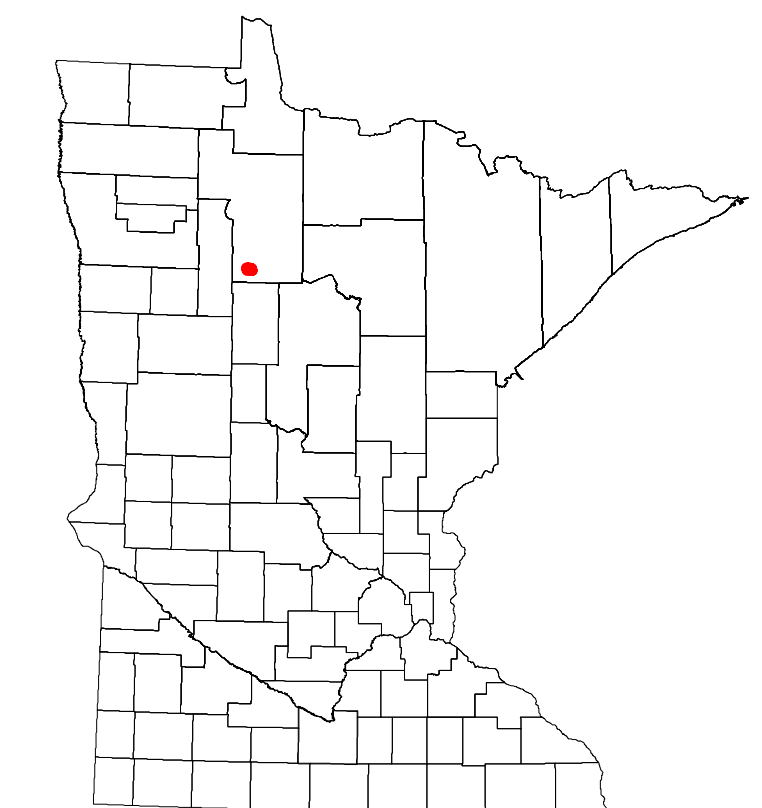
2024

Projection:  
Transverse Mercator  
NAD 1986  
UTM Zone 15

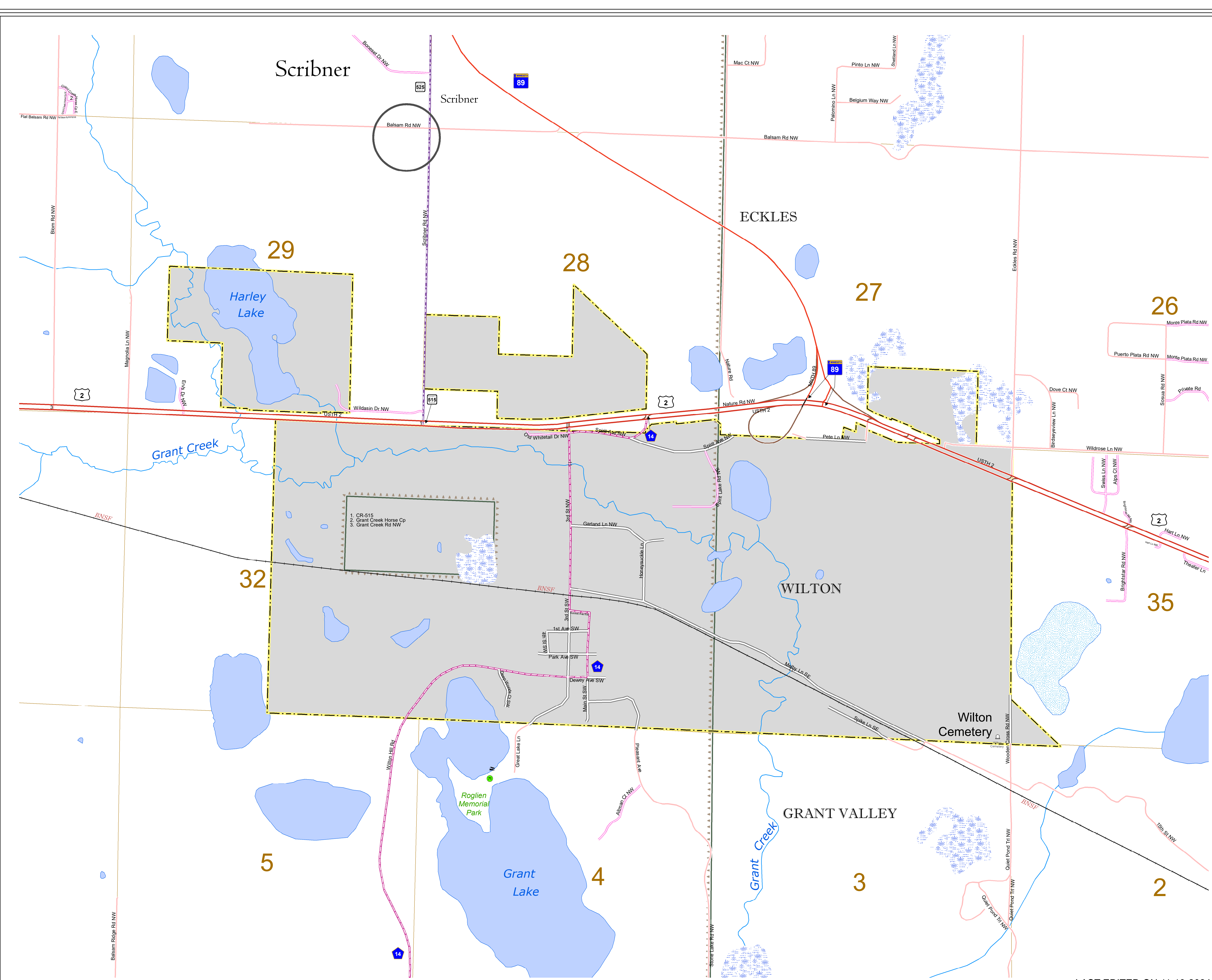


North American Datum  
of 1986

ROAD AND ROADWAY FEATURES	PUBLIC SERVICE FEATURES
INTERSTATE	MINOT OFFICE
US HIGHWAY	MINOT TRUCK STATION
COUNTY STATE AID HIGHWAY	HIGHWAY PATROL DISTRICT OFFICE
COUNTY ROAD	STATE TRAVEL INFORMATION CENTER
MUNICIPAL STREET	REST AREA (Full Service)
MUNICIPAL STATE AID STREET	REST AREA (Quick Turn)
PRIVATE STREET/ROAD	WAYSIDE (Only on Pk+Trk+)
UNORGANIZED TERRITORY ROAD	PUBLIC ACCESS POINT
RAMP OR CONNECTOR	LOCAL PARK
INTERSTATE EXIT	FARGO BOUNDS
GREAT RIVER ROAD	PORT OF ENTRY
OTHER ROADS	PARK AND RIDE LOT
FARMROAD	PUBLIC UNIVERSITY COLLEGE
STATE PARK	PRIVATE UNIVERSITY COLLEGE
NATIONAL PARK	ELEMENTARY SCHOOL
NATIONAL MONUMENT	MIDDLE SCHOOL
STATE FOREST	HIGH SCHOOL
STATE WILDLIFE STATE GAME	
RAILROAD AND RAILWAY FEATURES	AVIATION FEATURES
EMPIRE BUILDER STATION (AMTRAK)	COMMERCIAL AIRPORT
NORTHSTAR STATION (COMMUTER)	GENERAL AIRPORT
LIGHT RAIL	AIRSTRIP
BLUE LINE STATION	SEAPLANE
GREEN LINE STATION	AIRPORT RUNWAY
INFRASTRUCTURE FEATURES	CULTURAL FEATURES
LONG BRIDGE (100' OR GREATER SPAN)	STATE HISTORIC MARKER
MAJOR BRIDGE (50' TO 100' SPAN)	HISTORIC DISTRICT
MINOR BRIDGE (25' TO 50' SPAN)	HISTORIC SITE
ROAD TUNNEL (100' OR GREATER SPAN)	MONUMENT
RAILROAD BRIDGE (100' OR GREATER SPAN)	CEMETERY
RAILROAD BRIDGE (LESSER 100' SPAN)	
SKYWAY	TRIBAL LAND
PEDESTRIAN BRIDGE	COUNTY
PEDESTRIAN TUNNEL	MUNICIPALITY
DAM	ADJACENT MUNICIPALITY
LOCK AND DAM	FEDERAL ADJUSTED URBAN AREA (2014)
PUBLIC FACILITIES	
STATE CAPITOL	MILITARY
FEDERAL COURTHOUSE	STATE PARK
COUNTY COURTHOUSE	REGIONAL PARK
ARMORY	NATIONAL FOREST
CITY HALL	NATIONAL AND STATE FOREST
COMMUNITY CENTER	STATE FOREST
ARENA	NATIONAL TRAIL
STADIUM	WILDLIFE REFUGE AREA
POST OFFICE	WILDLIFE MANAGEMENT AREA
POLICE STATION	
FIRE STATION	HYDROLOGIC FEATURES
PUBLIC LIBRARY	RIVER OR STREAM (PERMANENT)
PUBLIC MUSEUM	LAKE, POND OR RESERVOIR
EVENT CENTER	STREAM (INTERMITTENT)
	DRAINAGE DITCH
	WETLAND
	ISLAND OR LAND
	REGIONAL WATERSHED
CITY CENTERS	
TRIBAL GOVERNMENT CENTER	
CITY CENTER	
LOCALLY INCORPORATED PLACE	
UNINCORPORATED COMMUNITY	



Population (U.S. Census 2020): 263



LAST EDITED ON 11-19-2024

To request information from this document in an alternative format, call 651-366-4718 or 1-800-657-3774 (Greater Minnesota); 711 or 1-800-627-3529 (Minnesota Relay). You may also send an e-mail to ADRequest.dot@state.mn.us. (Please request at least one week in advance.)