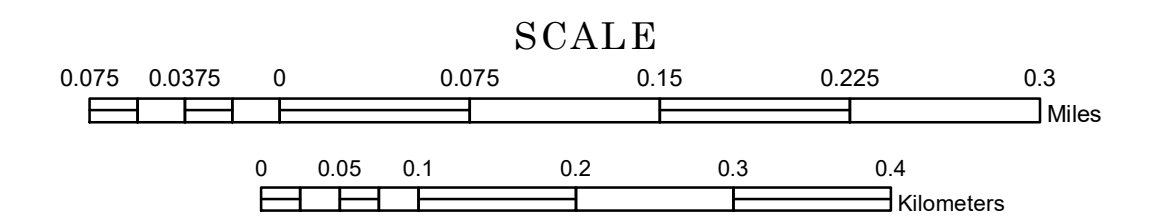


# MUNICIPALITY OF AUDUBON

PREPARED BY THE  
MINNESOTA DEPARTMENT OF TRANSPORTATION  
OFFICE OF TRANSPORTATION SYSTEM MANAGEMENT

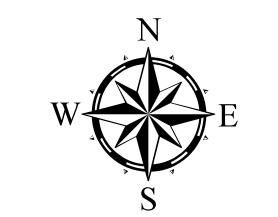
IN COOPERATION WITH  
U.S. DEPARTMENT OF TRANSPORTATION  
FEDERAL HIGHWAY ADMINISTRATION



1 in = 400 ft

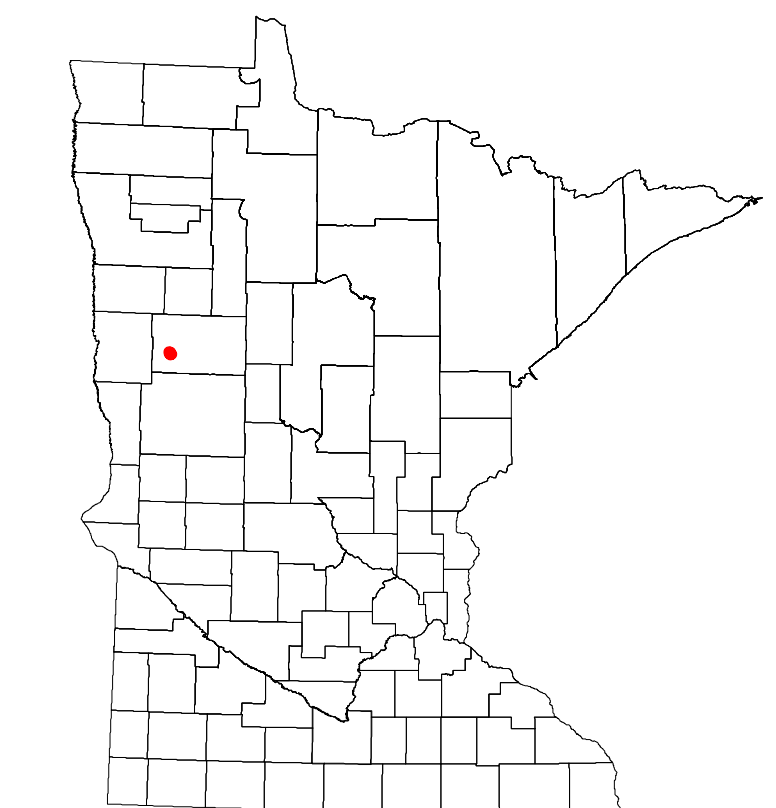
2024

Projection:  
Transverse Mercator  
NAD 1986  
UTM Zone 15

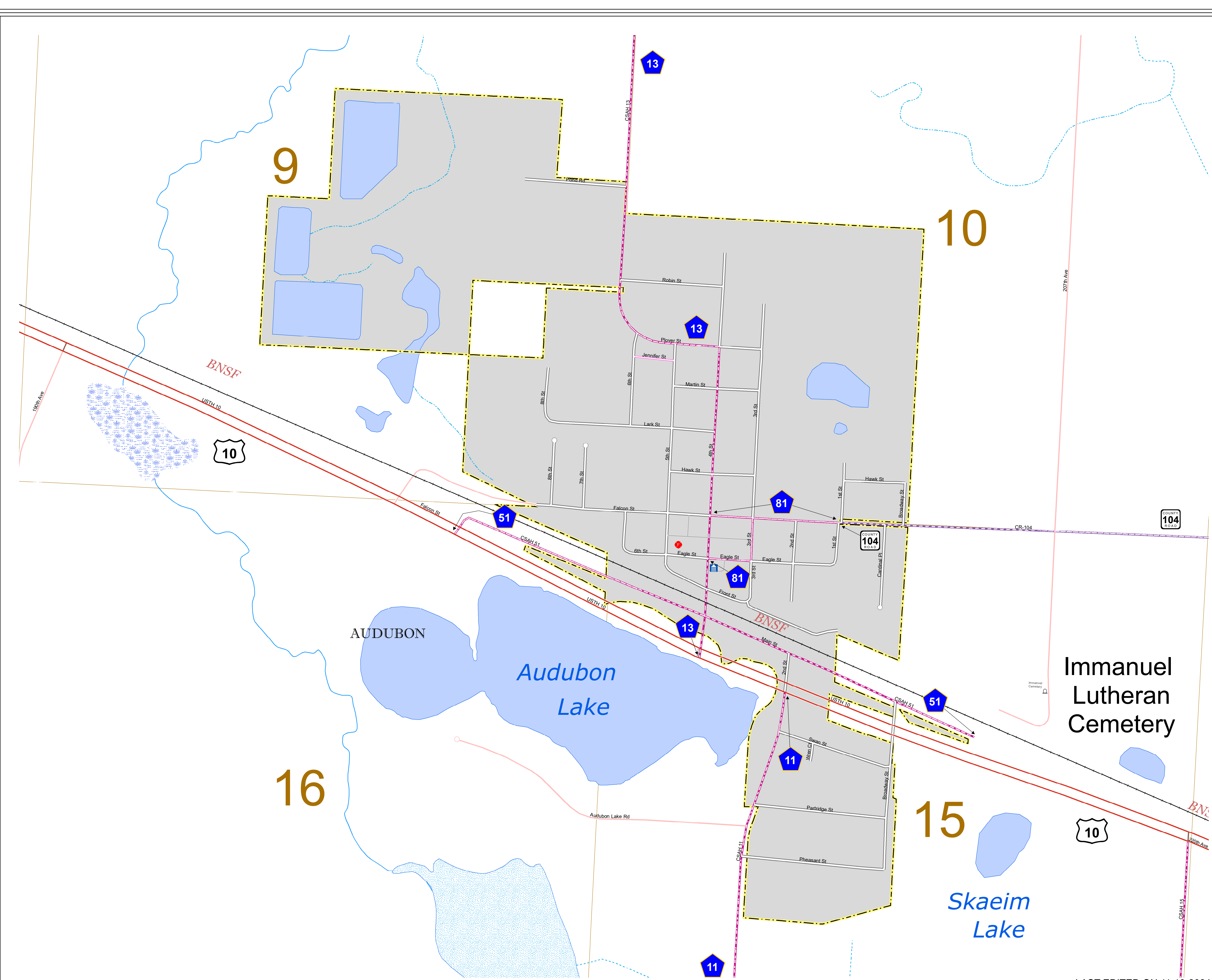


North American Datum  
of 1986

ROAD AND ROADWAY FEATURES	PUBLIC SERVICE FEATURES
INTERSTATE	MINDOT OFFICE
US HIGHWAY	MINDOT TRUCK STATION
MIN HIGHWAY	HIGHWAY PATROL DISTRICT OFFICE
COUNTY STATE AID HIGHWAY	STATE TRAVEL INFORMATION CENTER
COUNTY ROAD	REST AREA (Full Service)
MUNICIPAL STREET	REST AREA (Quick Turn)
MUNICIPAL STATE AID STREET	WAYSIDE (Only on Pkwy/Torq)
PRIVATE STREET/ROAD	PUBLIC ACCESS POINT
TOWNSHIP ROAD	LOCAL PARK
UNORGANIZED TERRITORY ROAD	FARMS/BOUNDS
RAMP OR CONNECTOR	PORT OF ENTRY
INTERSTATE EXIT	PARK AND RIDE LOT
GREAT RIVER ROAD	PUBLIC UNIVERSITY/COLLEGE
OTHER ROADS	PRIVATE UNIVERSITY/COLLEGE
FARMROAD	ELEMENTARY SCHOOL
INDEP SERVICE	MIDDLE SCHOOL
NATIONAL PARK	NATIONAL WILDLIFE STATE GAME
MILITARY	HIGH SCHOOL
RAILROAD AND RAILWAY FEATURES	AVIATION FEATURES
EMPIRE BUILDER STATION (AIRTRAK)	COMMERCIAL AIRPORT
NORTHSTAR STATION (COMMUTER)	GENERAL AIRPORT
LIGHT RAIL	AIRSTRIP
BLUE LINE STATION	SEAPLANE
GREEN LINE STATION	AIRPORT RUNWAY
INFRASTRUCTURE FEATURES	CULTURAL FEATURES
LONG BRIDGE (100' OR GREATER SPAN)	STATE HISTORIC MARKER
MAJOR BRIDGE (20' TO 100' SPAN)	HISTORIC DISTRICT
MINOR BRIDGE (2' TO 20' SPAN)	HISTORIC SITE
ROAD TUNNEL (100' OR GREATER SPAN)	MONUMENT
RAILROAD TUNNEL (100' OR GREATER SPAN)	CEMETERY
RAILROAD BRIDGE (LESSER THAN 100' SPAN)	BOUNDARY FEATURES
SKYWAY	TRIBAL LAND
PEDESTRIAN BRIDGE	COUNTY
PEDESTRIAN TUNNEL	MUNICIPALITY
DAM	ADJACENT MUNICIPALITY
LOCK AND DAM	FEDERAL ADJUSTED URBAN AREA (2014)
PUBLIC FACILITIES	MILITARY
STATE CAPITOL	STATE PARK
FEDERAL COURTHOUSE	REGIONAL PARK
COUNTY COURTHOUSE	NATIONAL FOREST
ARMORY	NATIONAL AND STATE FOREST
CITY HALL	STATE FOREST
TOWN HALL	NATIONAL TRAIL
COMMUNITY CENTER	WILDLIFE REFUGE AREA
ARENA	WILDLIFE MANAGEMENT AREA
STADIUM	HYDROLOGIC FEATURES
POST OFFICE	RIVER OR STREAM (PERENNIAL)
POLICE STATION	LAKE, POND OR RESERVOIR
FIRE STATION	STREAM (PERENNIAL)
PUBLIC LIBRARY	DRAINAGE DITCH
PUBLIC MUSEUM	WETLAND
EVENT CENTER	ISLAND OR LAND
CITY CENTERS	REGIONAL WATERSHED
TRIBAL GOVERNMENT CENTER	
CITY CENTER	
LOCALLY INCORPORATED PLACE	
UNINCORPORATED COMMUNITY	



Population (U.S. Census 2020): 560



LAST EDITED ON 11-19-2024

To request information from this document in an alternative format, call 651-366-4718 or 1-800-657-3774 (Greater Minnesota); 711 or 1-800-627-3529 (Minnesota Relay). You may also send an e-mail to ADarequest.dot@state.mn.us. (Please request at least one week in advance.)