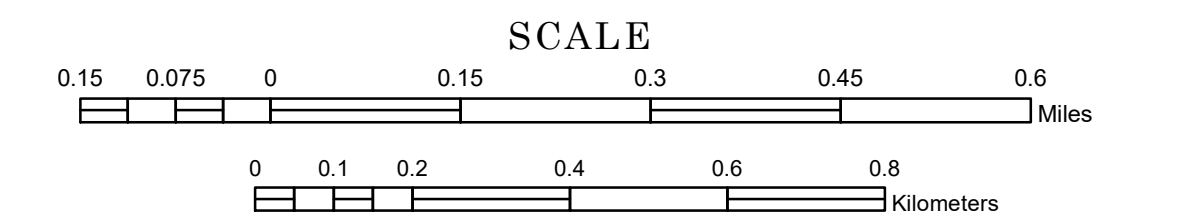


MUNICIPALITY OF AITKIN

PREPARED BY THE
MINNESOTA DEPARTMENT OF TRANSPORTATION
OFFICE OF TRANSPORTATION SYSTEM MANAGEMENT

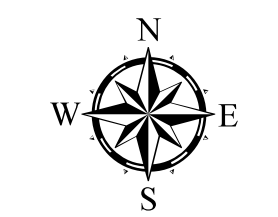
IN COOPERATION WITH
U.S. DEPARTMENT OF TRANSPORTATION
FEDERAL HIGHWAY ADMINISTRATION



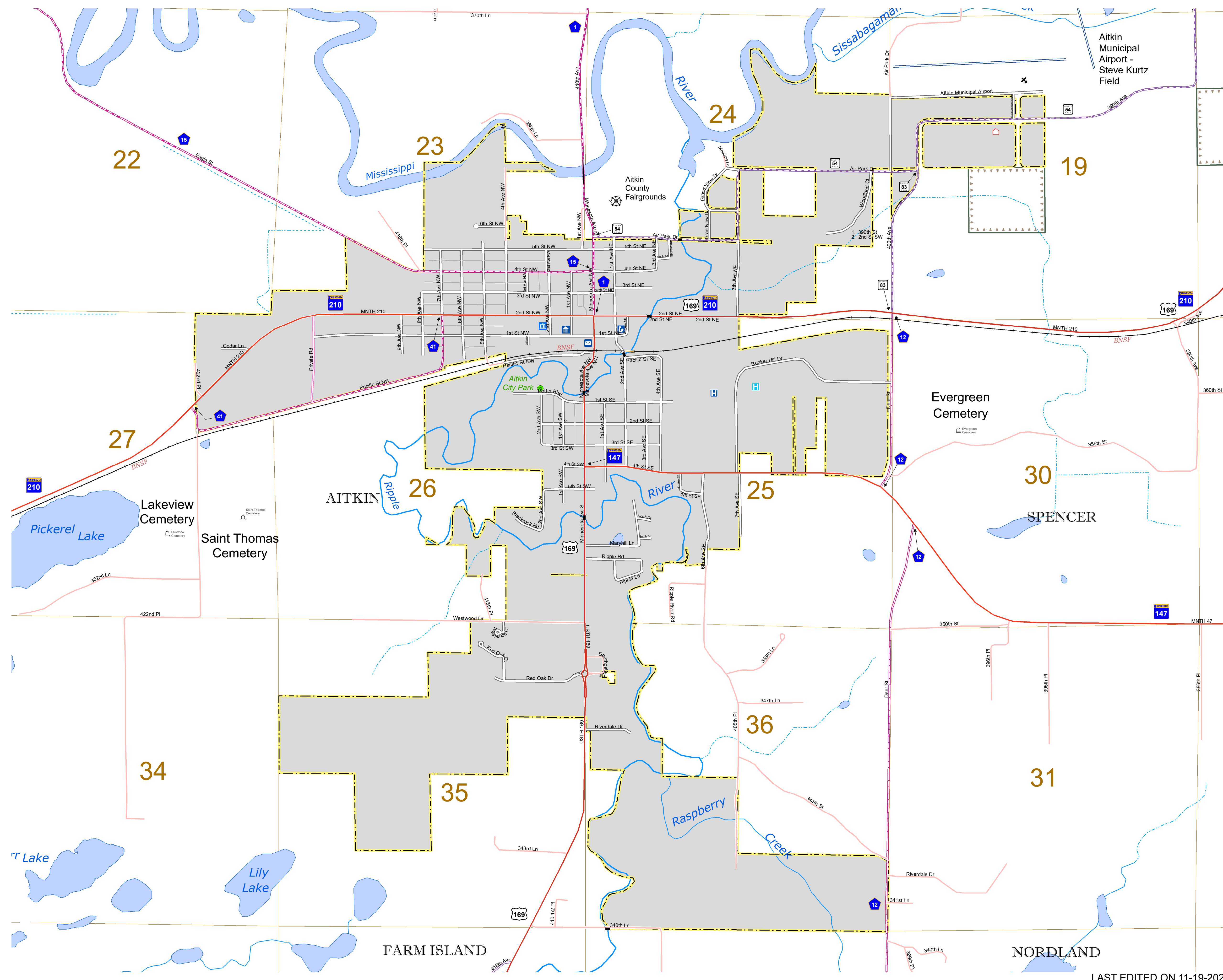
1 in = 800 ft

2024

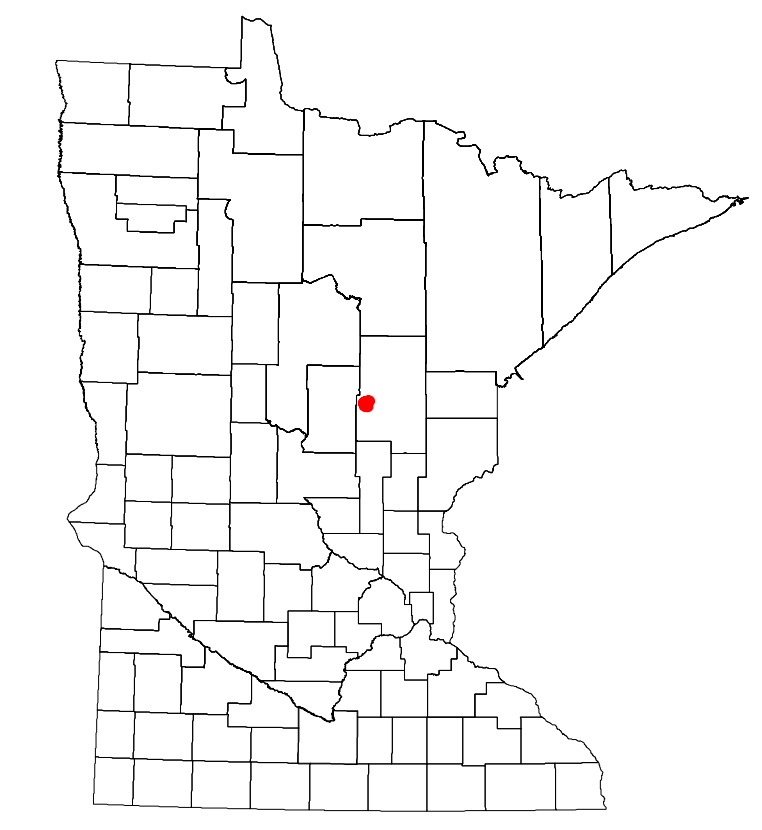
Projection:
Transverse Mercator
NAD 1986
UTM Zone 15



North American Datum
of 1986



ROAD AND ROADWAY FEATURES	PUBLIC SERVICE FEATURES
INTERSTATE	MINOT OFFICE
US HIGHWAY	MINOT TRUCK STATION
STATE AID HIGHWAY	HIGHWAY PATROL DISTRICT OFFICE
COUNTY ROAD	STATE TRAVEL INFORMATION CENTER
MUNICIPAL STREET	REST AREA (FULL SERVICE)
MUNICIPAL STATE AID STREET	REST AREA (FAST TRUCK)
PRIVATE STREET/ROAD	WAYSIDE (ONLY ON PI TRUCK)
TOWNSHIP ROAD	PUBLIC ACCESS POINT
UNORGANIZED TERRITORY ROAD	LOCAL PARK
RAMP OR CONNECTOR	FAIRGROUNDS
INTERSTATE EXIT	PORT OF ENTRY
GREAT RIVER ROAD	PARK AND RIDE LOT
OTHER ROAD	PUBLIC UNIVERSITY COLLEGE
RAILROAD AND RAILWAY FEATURES	PRIVATE UNIVERSITY COLLEGE
EMPIRE BUILDER STATION (AMTRAK)	ELEMENTARY SCHOOL
NORTHSTAR STATION (COMASTER)	MIDDLE SCHOOL
LIGHT RAIL	HIGH SCHOOL
BLUE LINE STATION	AVIATION FEATURES
GREEN LINE STATION	COMMERCIAL AIRPORT
INFRASTRUCTURE FEATURES	GENERAL AIRPORT
LONG BRIDGE (100' OR GREATER SPAN)	AIRSTRIP
MAJOR BRIDGE (20' TO 100' SPAN)	SEAPLANE
MINOR BRIDGE (5' TO 20' SPAN)	AIRPORT RUNWAY
ROAD TUNNEL (100' OR GREATER SPAN)	CULTURAL FEATURES
RAILROAD BRIDGE (100' OR GREATER SPAN)	STATE HISTORIC MARKER
RAILROAD BRIDGE (LESSER THAN 100' SPAN)	HISTORIC DISTRICT
SKYWAY	HISTORIC SITE
PEDESTRIAN BRIDGE	MONUMENT
PEDESTRIAN TUNNEL	CEMETERY
DAM	BOUNDARY FEATURES
LOCK AND DAM	TRIBAL LAND
PUBLIC FACILITIES	COUNTY
STATE CAPITOL	MUNICIPALITY
FEDERAL COURTHOUSE	ADJACENT UNINCORPORATED
COUNTY COURTHOUSE	FEDERAL ADJUSTED URBAN AREA (2014)
ARMORY	MILITARY
CITY HALL	STATE PARK
COMMUNITY CENTER	REGIONAL PARK
ARENA	NATIONAL FOREST
STADIUM	NATIONAL AND STATE FOREST
POST OFFICE	STATE FOREST
POLICE STATION	NATIONAL TRAIL
FIRE STATION	WILDLIFE REFUGE AREA
PUBLIC LIBRARY	WILDLIFE MANAGEMENT AREA
PUBLIC MUSEUM	HYDROLOGIC FEATURES
EVENT CENTER	RIVER OR STREAM (PERMANENT)
CITY CENTERS	LAKE, POND OR RESERVOIR
TRIBAL GOVERNMENT CENTER	STREAM (PERMANENT)
CITY CENTER	DRAINAGE DITCH
LOCALLY INCORPORATED PLACE	WETLAND
UNINCORPORATED COMMUNITY	ISLAND OR LAND
	REGIONAL WATERSHED



To request information from this document in an alternative format, call 651-366-4718 or 1-800-657-3774 (Greater Minnesota); 711 or 1-800-627-3529 (Minnesota Relay). You may also send an e-mail to ADRequest.dot@state.mn.us. (Please request at least one week in advance.)

LAST EDITED ON 11-19-2024

Population (U.S. Census 2020): 2168