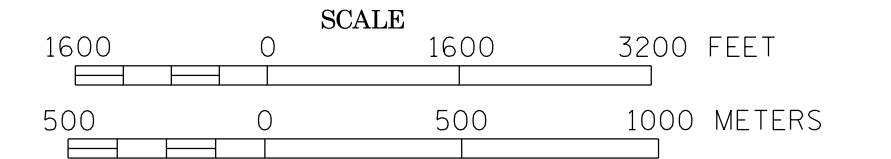
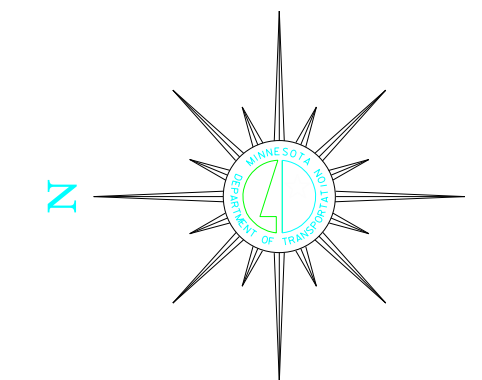


# MUNICIPALITY OF OAKDALE

PREPARED BY THE  
MINNESOTA DEPARTMENT OF TRANSPORTATION  
OFFICE OF TRANSPORTATION SYSTEM MANAGEMENT  
IN COOPERATION WITH  
U.S. DEPARTMENT OF TRANSPORTATION  
FEDERAL HIGHWAY ADMINISTRATION

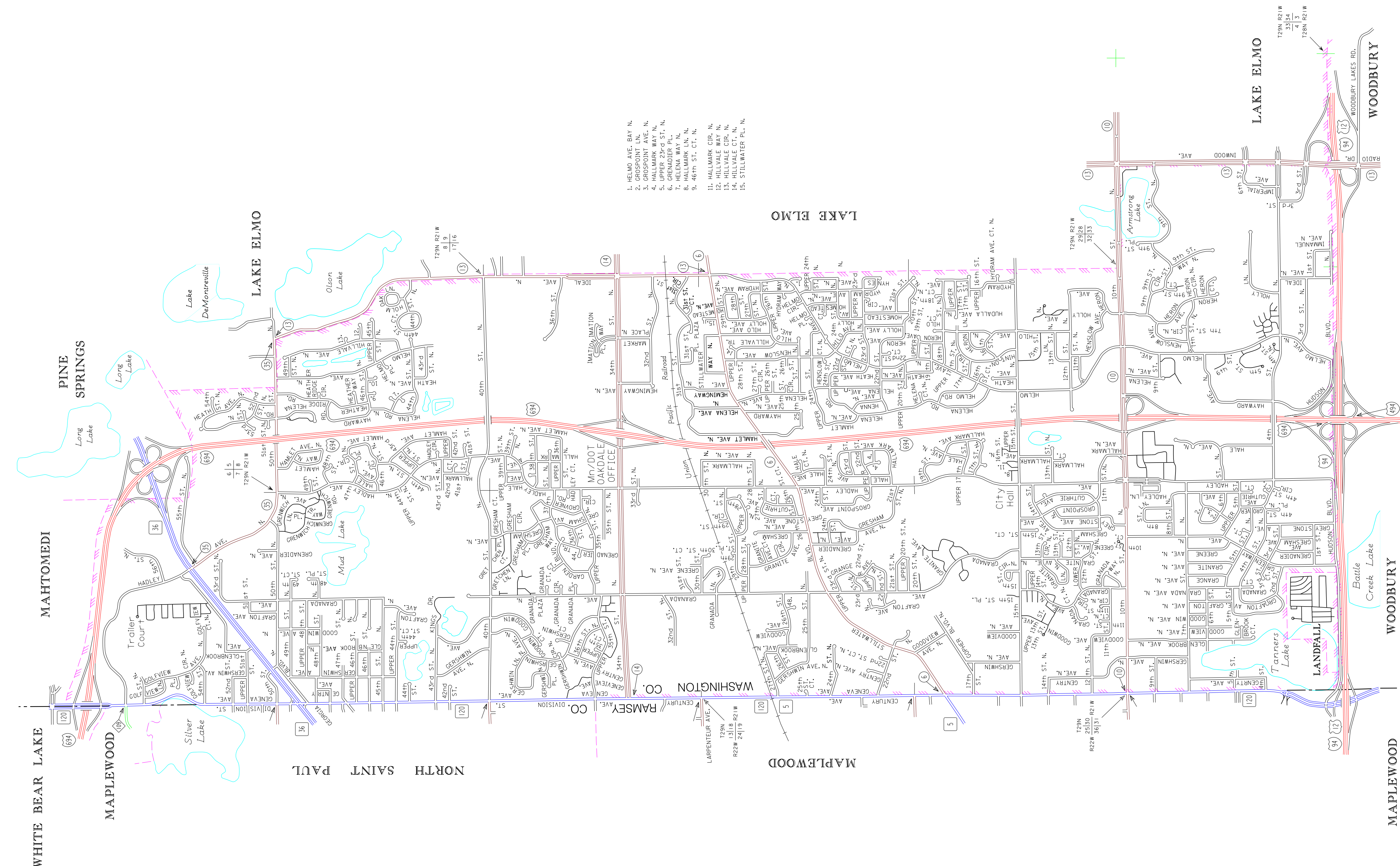


2015  
BASIC DATA - 2013



## LEGEND

- INTERSTATE TRUNK HIGHWAY..... (35)
- U.S. TRUNK HIGHWAY..... (16)
- STATE TRUNK HIGHWAY..... (55)
- COUNTY STATE AID HIGHWAY..... (23)
- COUNTY ROAD..... (15)
- CORPORATE LIMITS.....
- PUBLIC ROAD.....
- PRIVATE ROAD.....



1. HELMO AVE. DIV. N.
2. GROSSPOINT AVE. N.
3. HALLMARK WAY N.
4. GREENDRIVER PL. N.
5. HELMVALE WAY N.
6. HELMVALE CT. N.
7. HELMVALE PL. N.
8. HELMVALE DR. N.
9. HELMVALE ST. N.
10. HELMVALE BLVD. N.
11. HILLVALE WAY N.
12. HILLVALE DR. N.
13. HILLVALE CT. N.
14. HILLVALE PL. N.
15. STILLWATER PL. N.

To request information from this document in an alternative format, call 651-366-4718 or 1-800-657-3774 (Greater Minnesota), 711 or 1-800-627-3529 (Minnesota Relay). You may also send an e-mail to [ADArequest.do@state.mn.us](mailto:ADArequest.do@state.mn.us). (Please request at least one week in advance).