

MUNICIPALITY OF MANKATO

PREPARED BY THE
MINNESOTA DEPARTMENT OF TRANSPORTATION
OFFICE OF TRANSPORTATION SYSTEM MANAGEMENT

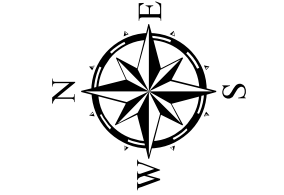
IN COOPERATION WITH
U.S. DEPARTMENT OF TRANSPORTATION
FEDERAL HIGHWAY ADMINISTRATION



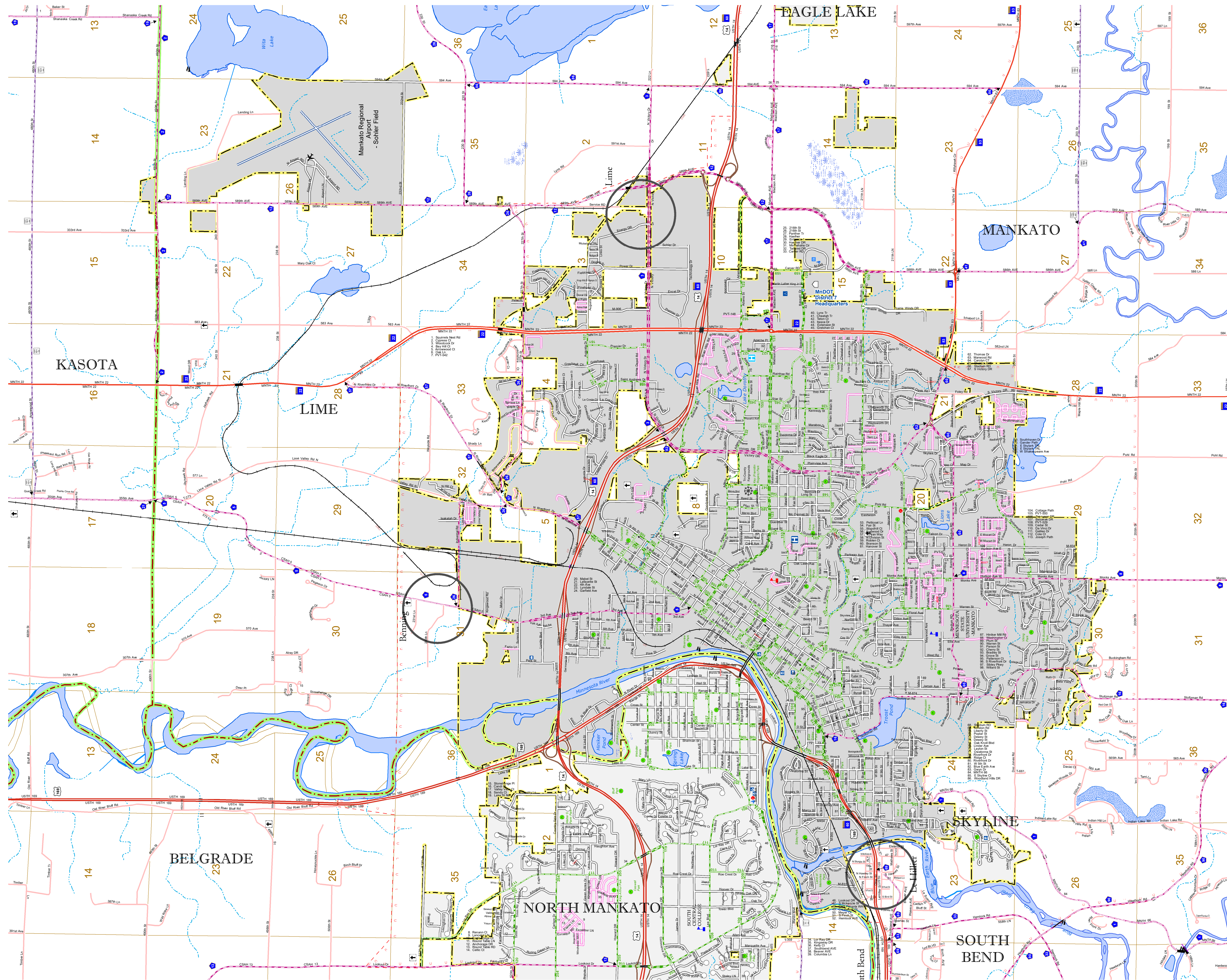
1 in = 2,000 ft

2019

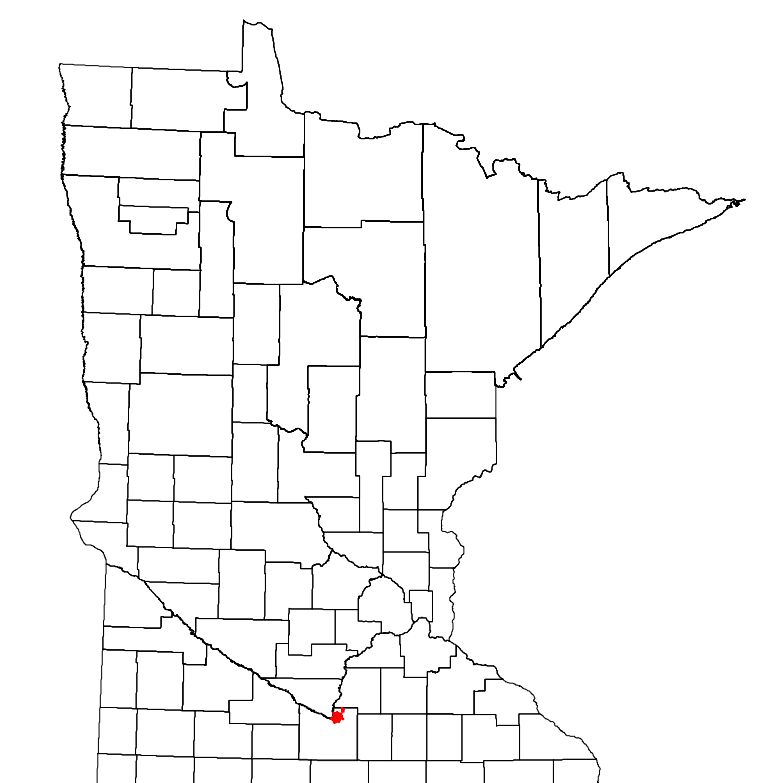
Projection:
Transverse Mercator
NAD 1986
UTM Zone 15



North American Datum
of 1986



ROAD AND ROADWAY FEATURES	PUBLIC SERVICE FEATURES
INTERSTATE	MNDOT OFFICE
US HIGHWAY	MNDOT TRUCK STATION
MN HIGHWAY	HIGHWAY PATROL DISTRICT OFFICE
COUNTY STATE AID HIGHWAY	STATE TRAVEL INFORMATION CENTER
COUNTY ROAD	REST AREA (FULL SERVICE)
MUNICIPAL STATE AID STREET	REST AREA (VAULT TOILET)
PRIVATE STREET/ROAD	WAYSIDE (ONLY OR PVT TOILET)
TOWNSHIP ROAD	LOCAL PARK
UNORGANIZED TERRITORY ROAD	PUBLIC ACCESS POINT
RAMP OR CONNECTOR	FAIRGROUNDS
INTERSTATE EXIT	PORT OF ENTRY
GREAT RIVER ROAD	PARK AND RIDE LOT
OTHER ROADS	PUBLIC UNIVERSITY/COLLEGE
FRONTAGE	PRIVATE UNIVERSITY/COLLEGE
STATE PARK	CULTURAL FEATURES
NATIONAL MONUMENT	STATE HISTORICAL MARKER
NATIONAL FOREST	HISTORIC DISTRICT
MILITARY	HISTORIC SITE
AVIATION FEATURES	MONUMENT
COMMERCIAL AIRPORT	BOUNDARY FEATURES
AIRSTRIP	TRIBAL LAND
SEAPLANE	COUNTY
AIRPORT RUNWAY	MUNICIPALITY
RAILROAD AND RAILWAY FEATURES	FEDERAL ADJUSTED URBAN AREA (2014)
EMPIRE BUILDER STATION (AMTRAK)	MILITARY
NORTHSTAR STATION (COMCAST)	VOYAGEURS NATIONAL PARK
LIGHT RAIL	BOUNDARY WATERS CANOE AREA WILDERNESS
BLUE LINE	STATE PARK
GREEN LINE	REGIONAL PARK
INFRASTRUCTURE FEATURES	NATIONAL FOREST
LONG BRIDGE (100' OR GREATER SPAN)	NATIONAL AND STATE FOREST
MAJOR BRIDGE (20' TO 100' SPAN)	STATE FOREST
MINOR BRIDGE (5' TO 20' SPAN)	NATIONAL TRAIL
DAM	WILDLIFE REFUGE AREA
LOCK AND DAM	WILDLIFE MANAGEMENT AREA
PUBLIC FACILITIES	HYDROLOGIC FEATURES
STATE CAPITOL	RIVER OR STREAM (PERMANENT)
FEDERAL COURTHOUSE	LAKE, POND OR RESERVOIR
COUNTY COURTHOUSE	STREAM (INTERMITTENT)
ARMORY	DRAINAGE DITCH
CITY CENTERS	WETLAND
TRIBAL GOVERNMENT CENTER	ISLAND OR LAND
CITY CENTER	REGIONAL WATERSHED
LOCALLY KNOWN PLACE	
UNINCORPORATED COMMUNITY	



LAST EDITED ON 2-25-2020

Population (U.S. Census 2010): 39309

To request information from this document in an alternative format, call 651-366-4718 or 1-800-657-3774 (Greater Minnesota); 711 or 1-800-627-3529 (Minnesota Relay). You may also send an e-mail to ADRequest.dot@state.mn.us. (Please request at least one week in advance.)