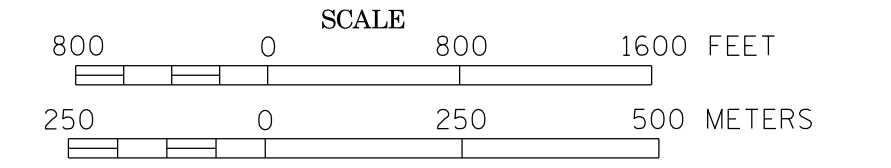
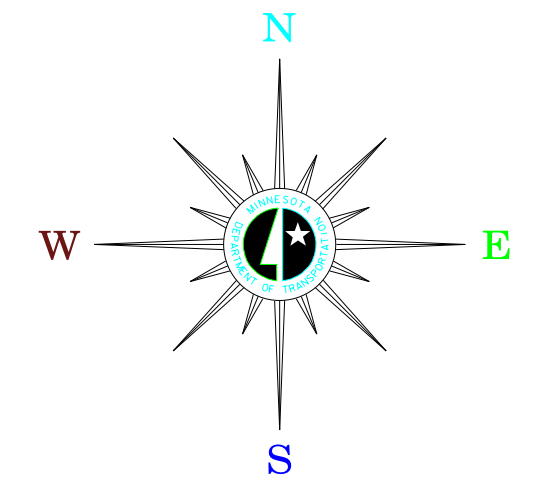


MUNICIPALITY OF
JORDAN

PREPARED BY THE
MINNESOTA DEPARTMENT OF TRANSPORTATION
OFFICE OF TRANSPORTATION SYSTEM MANAGEMENT
IN COOPERATION WITH
U.S. DEPARTMENT OF TRANSPORTATION
FEDERAL HIGHWAY ADMINISTRATION



2015
BASIC DATA - 2013



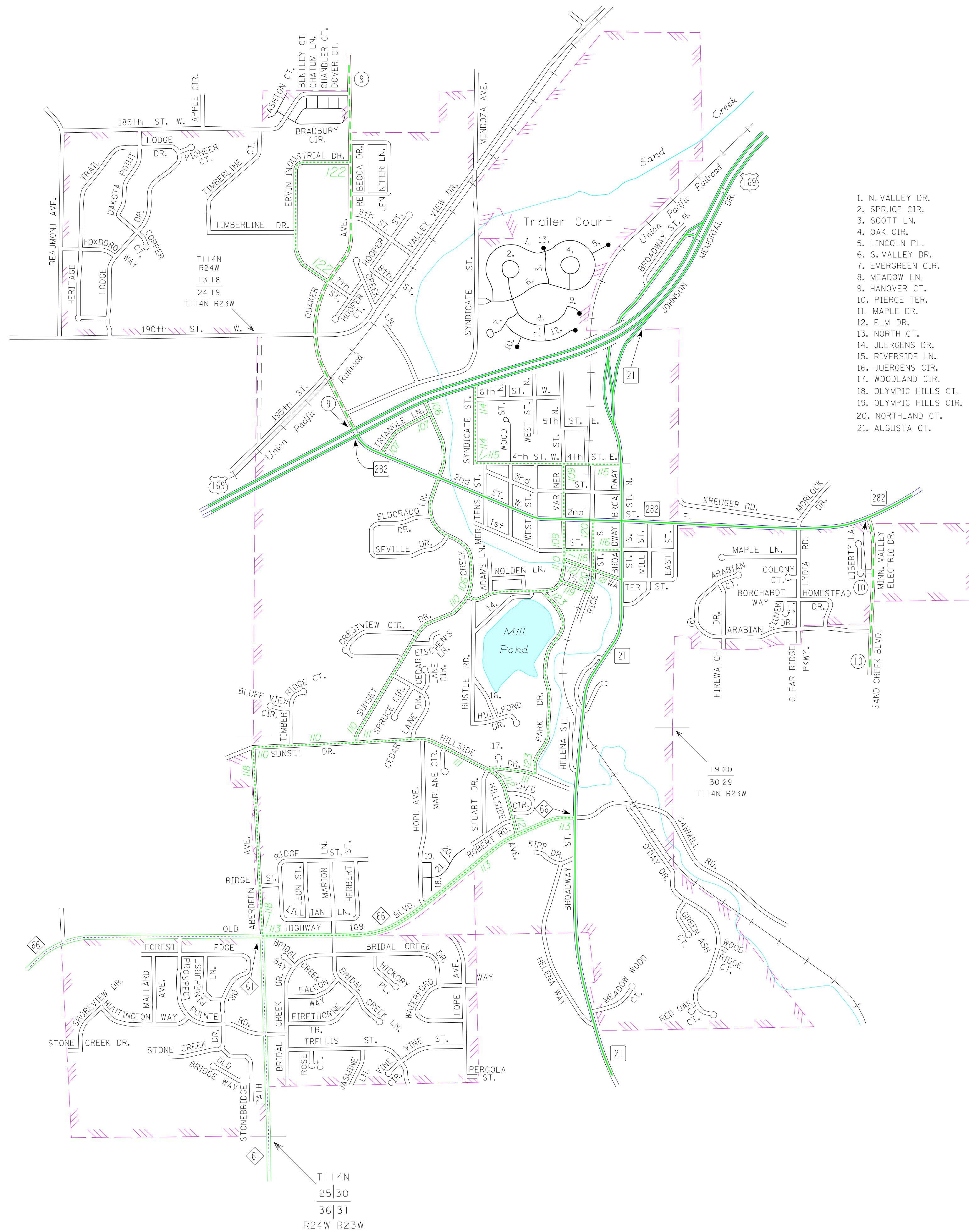
LEGEND

- INTERSTATE TRUNK HIGHWAY..... (35)
- U.S. TRUNK HIGHWAY..... (10)
- STATE TRUNK HIGHWAY..... (55)
- COUNTY STATE AID HIGHWAY..... (23)
- COUNTY ROAD..... (5)
- CORPORATE LIMITS.....
- PUBLIC ROAD.....
- PRIVATE ROAD.....

MUNICIPAL STATE AID STREET SYSTEM

LEGEND

- MUNICIPAL COUNTY STATE AID STREET.....
- MUNICIPAL STATE AID STREET.....
- COUNTY STATE AID HIGHWAY.....
- COUNTY ROAD.....
- TRUNK HIGHWAY.....



1. N. VALLEY DR.
2. SPRUCE CIR.
3. SCOTT LN.
4. OAK CIR.
5. LINCOLN PL.
6. S. VALLEY DR.
7. EVERGREEN CIR.
8. MEADOW LN.
9. HANOVER CT.
10. PIERCE TER.
11. MAPLE DR.
12. ELM DR.
13. NORTH CT.
14. JUERGENS DR.
15. RIVERSIDE LN.
16. JUERGENS CIR.
17. WOODLAND CIR.
18. OLYMPIC HILLS CT.
19. OLYMPIC HILLS CT.
20. NORTHLAND CT.
21. AUGUSTA CT.

T114N
25|30
36|31
R24W R23W