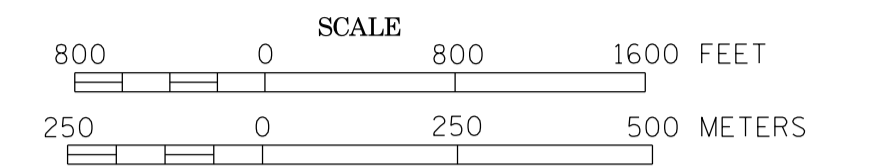
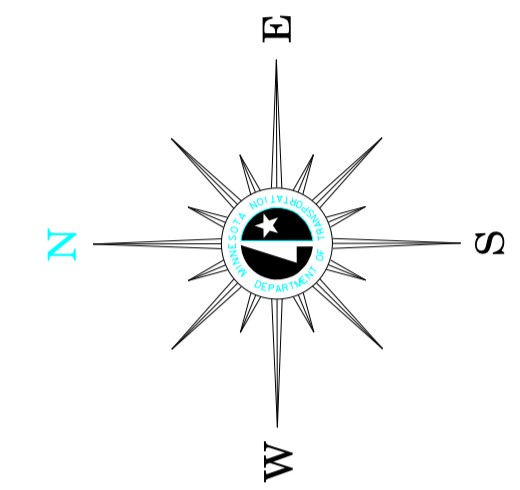


MUNICIPALITY OF
SAINT JOSEPH
 PREPARED BY THE
 MINNESOTA DEPARTMENT OF TRANSPORTATION
 OFFICE OF TRANSPORTATION SYSTEM MANAGEMENT
 IN COOPERATION WITH
 U.S. DEPARTMENT OF TRANSPORTATION
 FEDERAL HIGHWAY ADMINISTRATION

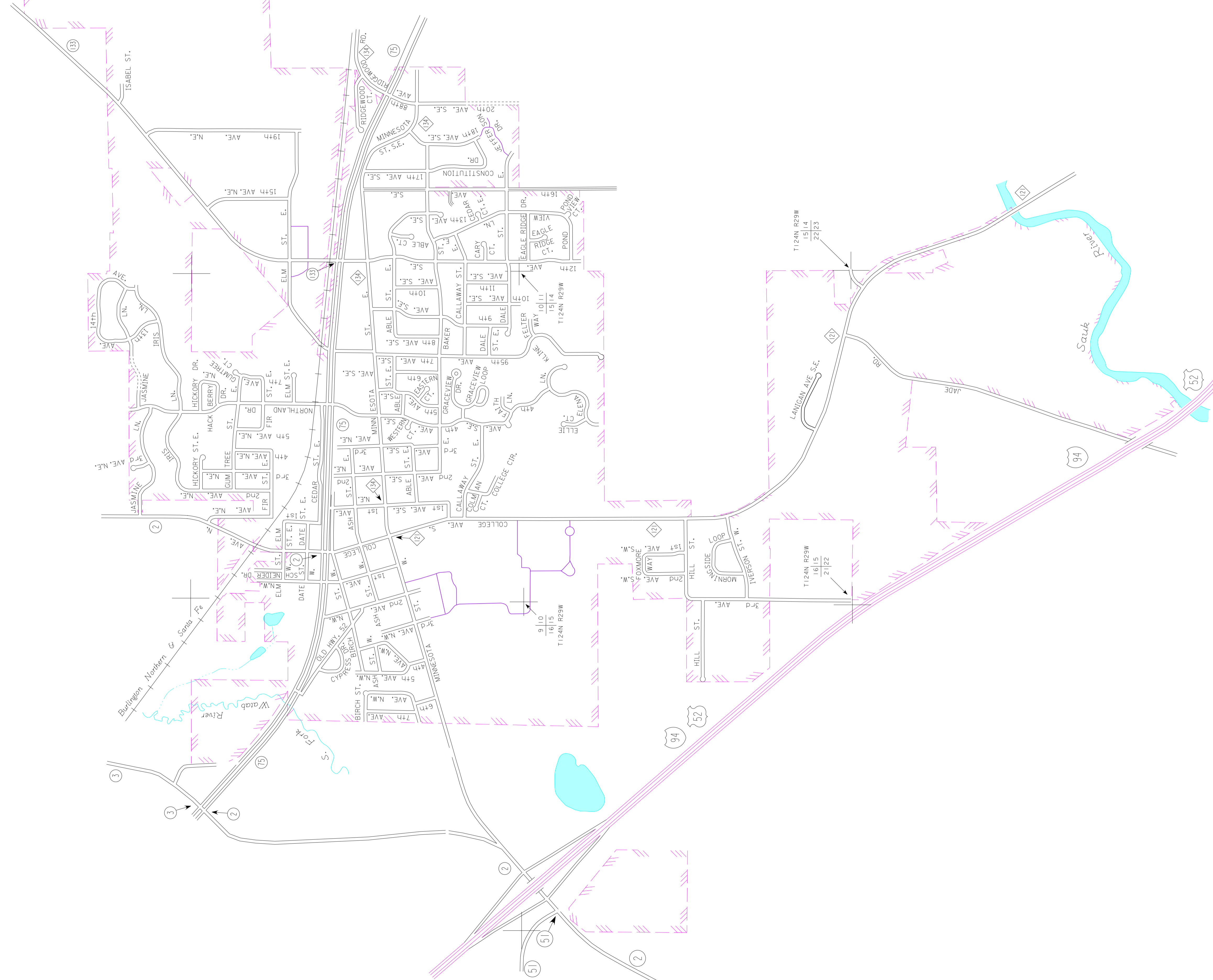


2014
 BASIC DATA - 2013



LEGEND

- INTERSTATE TRUNK HIGHWAY..... (I-94)
- U.S. TRUNK HIGHWAY..... (US-52)
- STATE TRUNK HIGHWAY..... (ST-94)
- COUNTY STATE AID HIGHWAY..... (CSA-2)
- COUNTY ROAD..... (C-13)
- CORPORATE LIMITS..... (dashed line)
- PUBLIC ROAD..... (solid line)
- PRIVATE ROAD..... (dotted line)



To request information from this document in an alternative format, call 651-366-4718 or 1-800-657-3774 (Greater Minnesota); 711 or 1-800-627-3529 (Minnesota Relay). You may also send an e-mail to ADRequest.dot@state.mn.us. (Please request at least one week in advance).