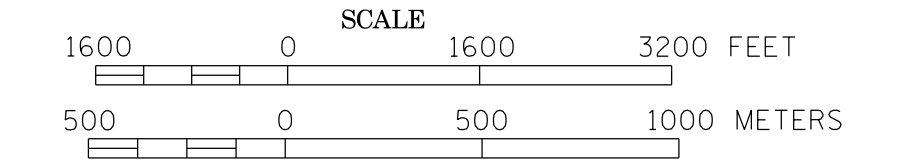


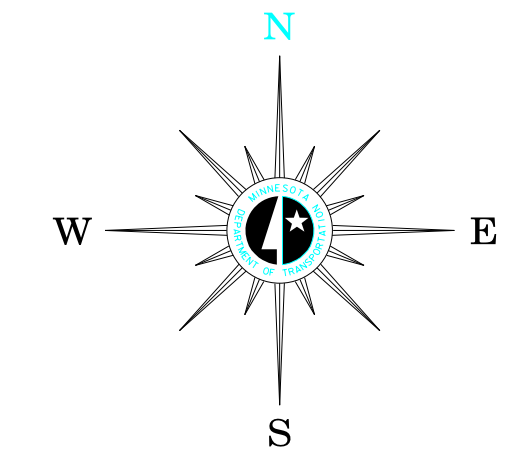
MUNICIPALITY OF ANDOVER

PREPARED BY THE
MINNESOTA DEPARTMENT OF TRANSPORTATION
 OFFICE OF TRANSPORTATION SYSTEM MANAGEMENT
 IN COOPERATION WITH
U.S. DEPARTMENT OF TRANSPORTATION
 FEDERAL HIGHWAY ADMINISTRATION



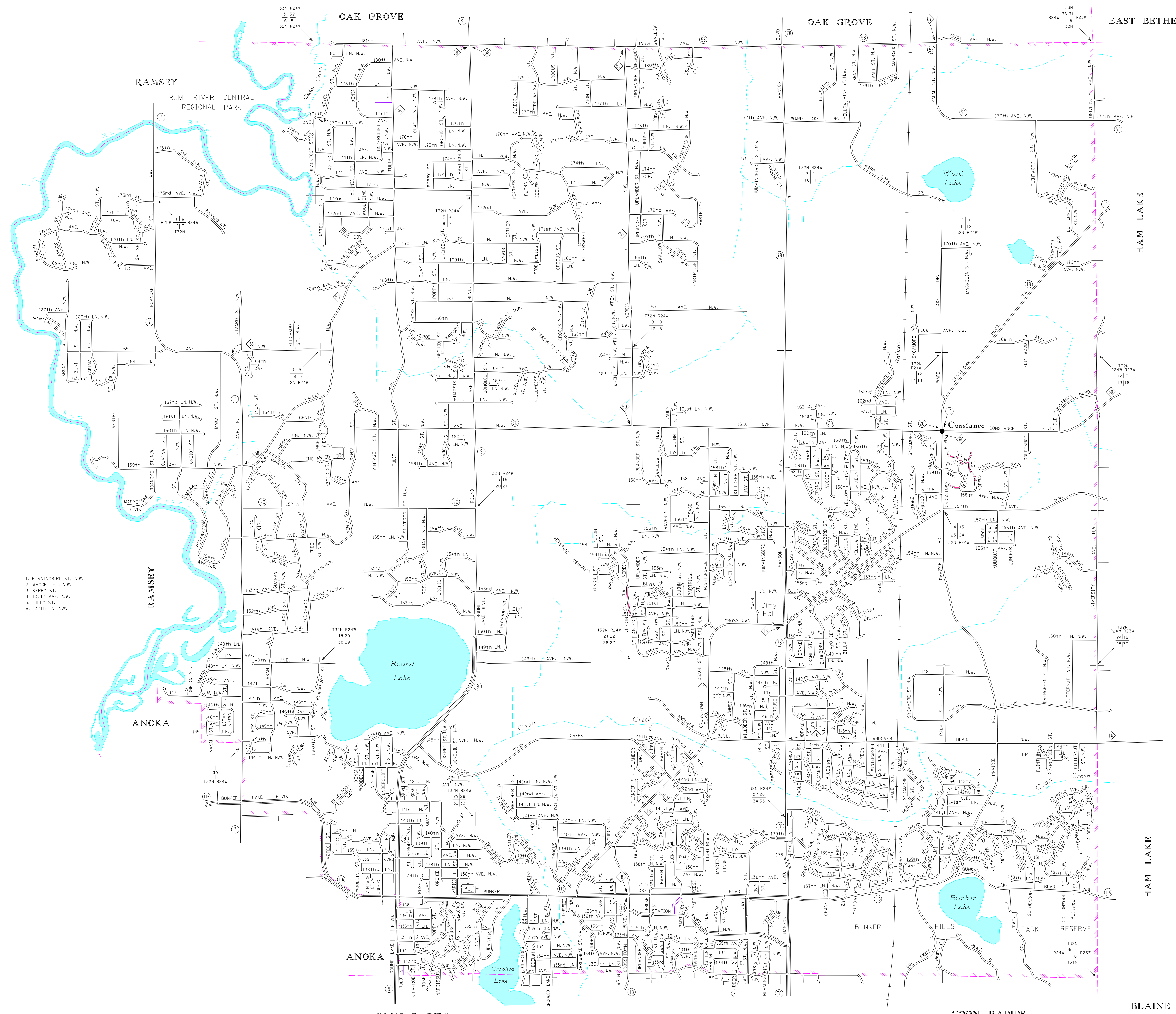
2014

BASIC DATA - 2013



LEGEND

- INTERSTATE TRUNK HIGHWAY..... 35
- U.S. TRUNK HIGHWAY..... 16
- STATE TRUNK HIGHWAY..... 55
- COUNTY STATE AID HIGHWAY..... 23
- COUNTY ROAD..... 5
- CORPORATE LIMITS.....
- PUBLIC ROAD.....
- PRIVATE ROAD.....



1. HUMMINGBIRD ST. N.W.
2. AVOCET ST. N.W.
3. KERRY ST.
4. 137th AVE. N.W.
5. LILLY ST.
6. 137th LN. N.W.

RAMSEY OAK GROVE OAK GROVE EAST BETHEL HAM LAKE
 ANOKA ANOKA BUNKER HILLS COON RAPIDS COON RAPIDS BLAINE